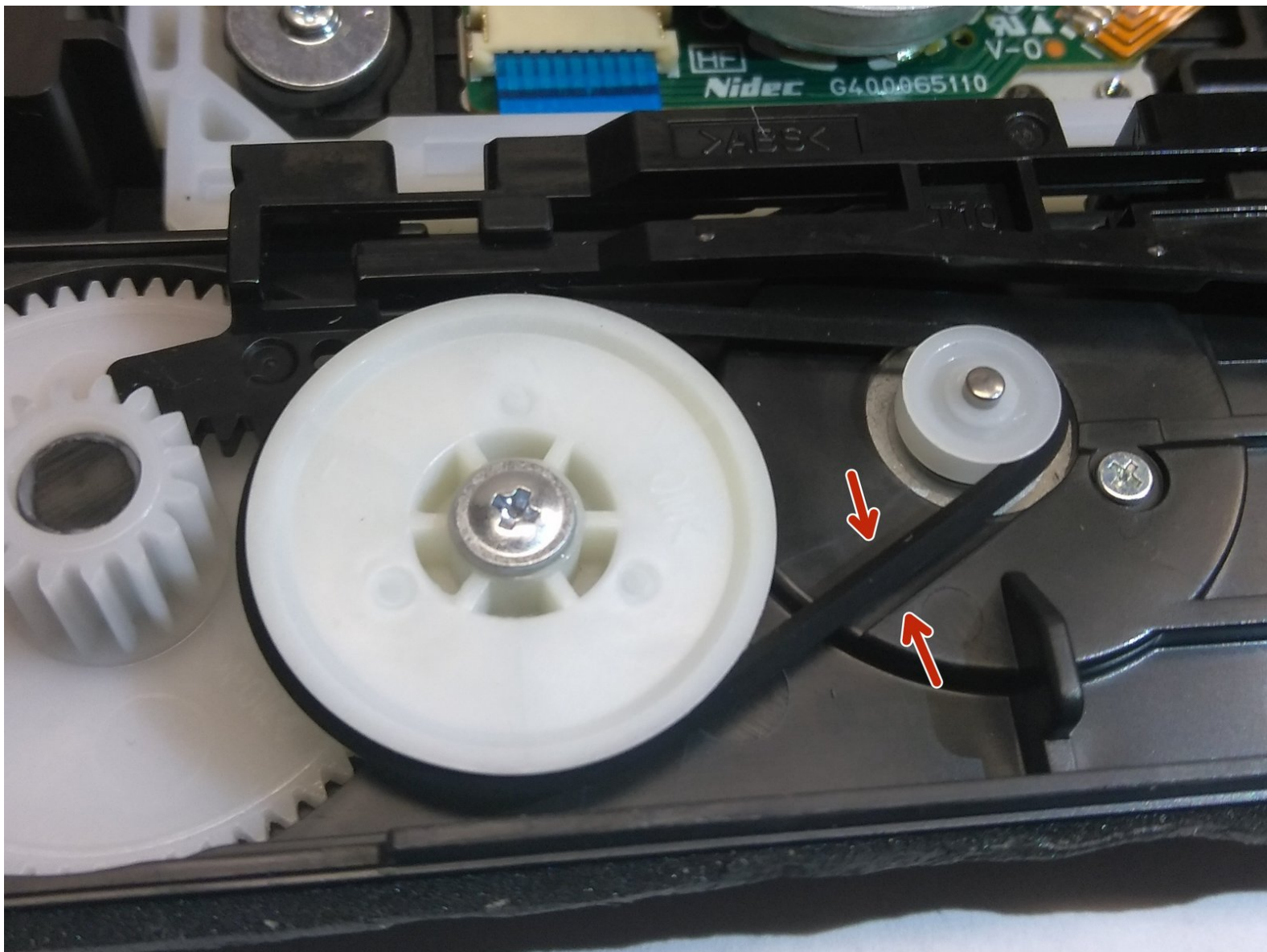




Sony BDP-S3200 Disk Tray Belt Replacement

The disk tray belt in the disk drive can wear out with time or break causing the disk tray to not open. This guide will show how to replace this belt.

Written By: Eneida Montalban



INTRODUCTION

The disk tray belt is what allows the disk tray to open and close. When the eject bottom is pressed there are two gears that rotate with the belt. If this belt is broken, cracked, or missing both gears will not rotate together causing the tray to no longer open. To fix this issue this belt can be replaced using an O ring or another tray belt of the same size.



TOOLS:

- [Phillips #1 Screwdriver](#) (1)
-

Step 1 — Sony BDP-S3200 Disassembly



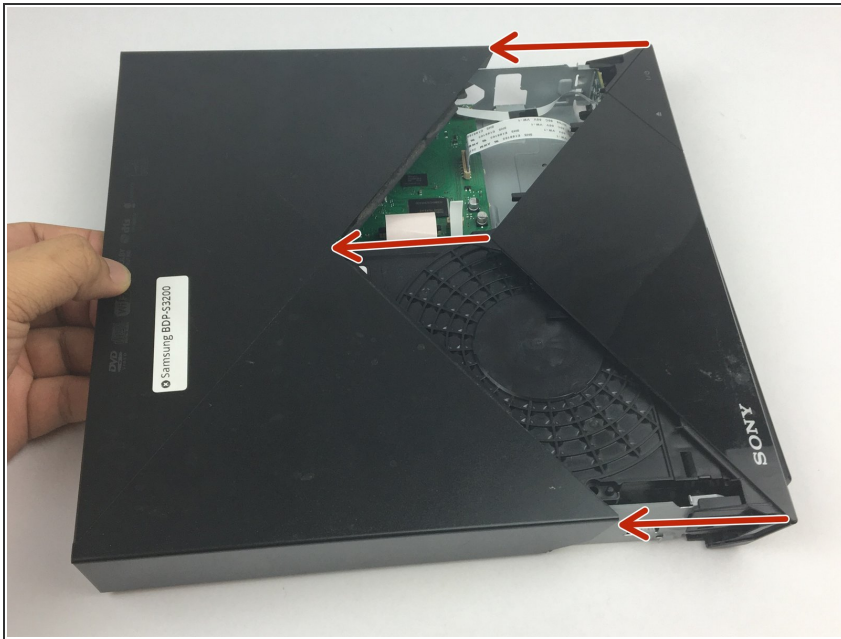
- Remove all cables from the device.

Step 2



- Use a #1 Phillips screwdriver to remove the three screws located in the back of the device.

Step 3



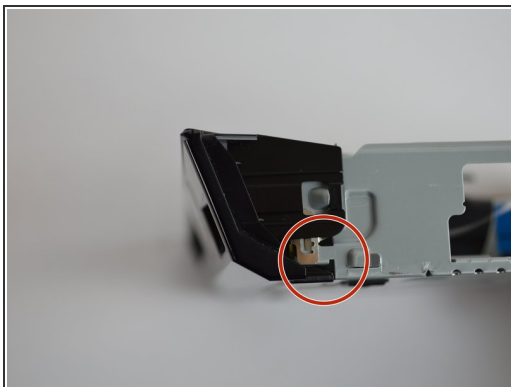
- Pull the top cover off by sliding back from the device once the screws have been taken out.

Step 4 — Disk Drive Replacement



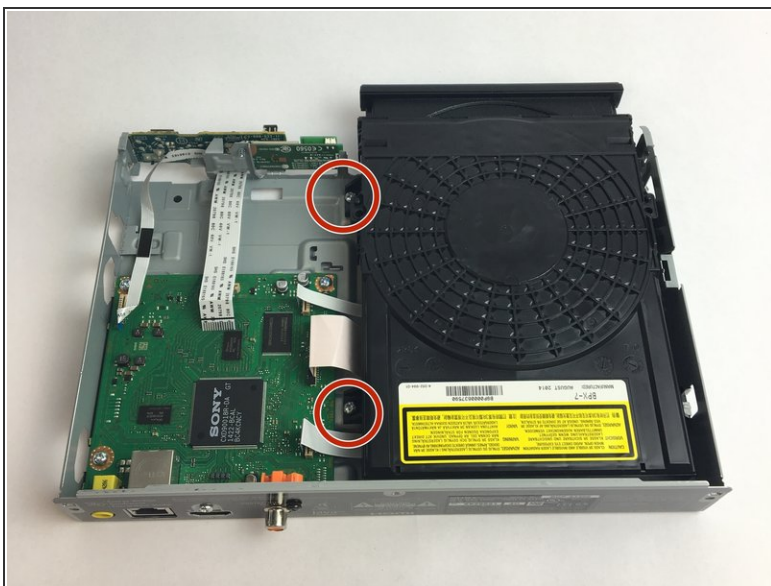
- Locate the disk drive

Step 5



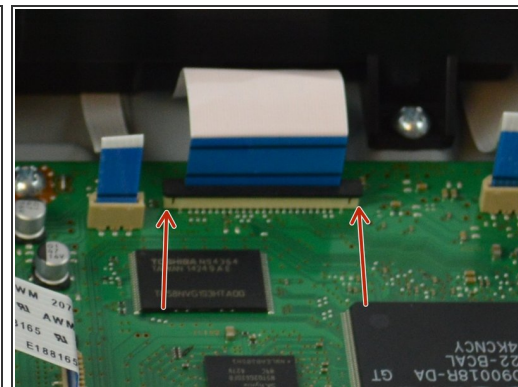
- Lightly lift off the hook on both front rear side and the bottom of the device to remove the front panel

Step 6




- Remove the two screws that attach the disk drive to the frame using a #1 Phillips screwdriver.

Step 7



- Carefully pull the (3) three bands off vertically.

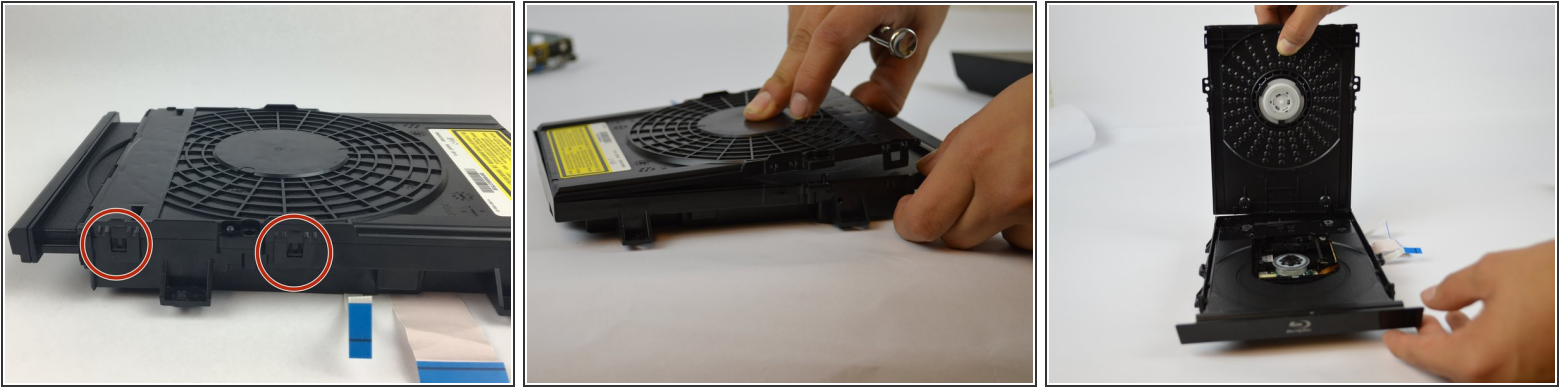
 **NOTE:** There is a latch that needs to be lifted off before pulling the band out for the middle band.

Step 8



- Lift the disk drive off of the device

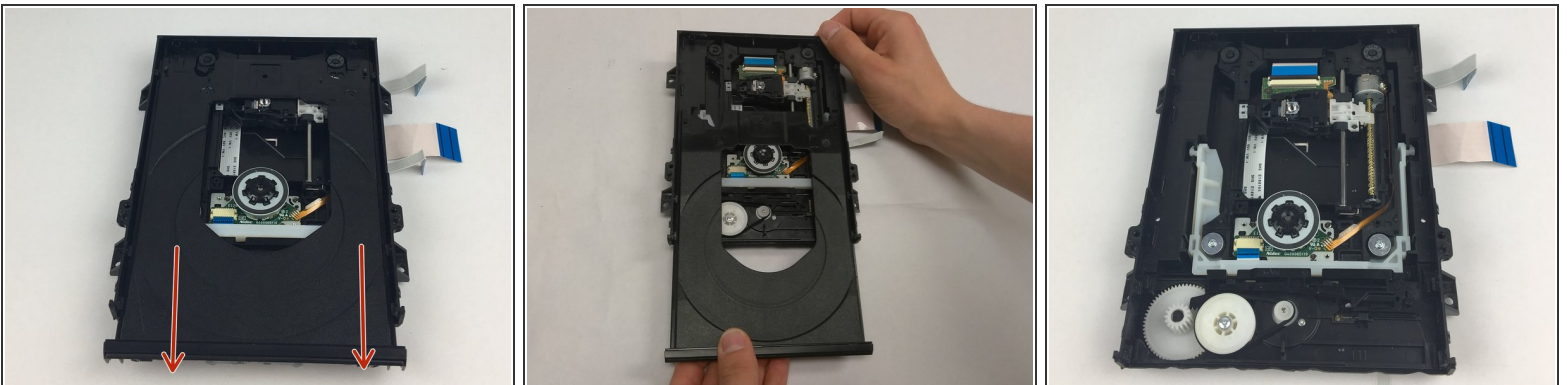
Step 9 — Disk Tray Belt



- Remove the top of the disk drive by gently lifting up on the four latches located on both sides of the disk drive while lifting upwards.

⚠ The latches are very thin and can break off easily so make sure to use caution when lifting them to remove the disk drive top.

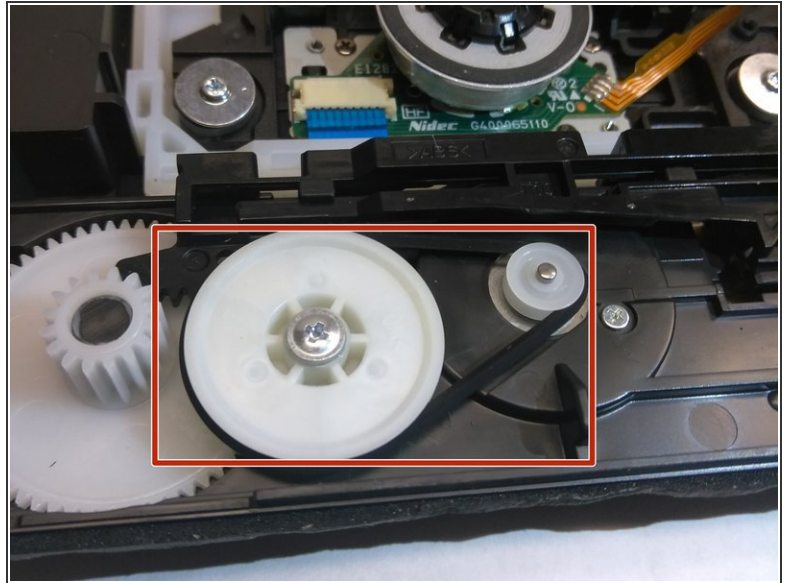
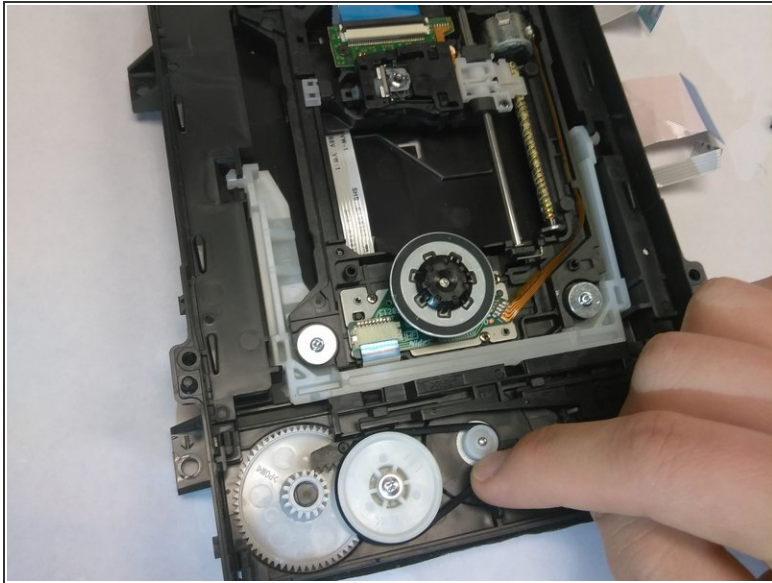
Step 10



- Slide out the disk tray.

⚠ If the disk tray does not come out easily don't force it out this could break the gears that allow the tray to move. Gently lift the disk tray upwards while sliding it out.

Step 11



- Remove the disc tray belt.

To reassemble your device, follow these instructions in reverse order.