



Samsung Chromebook XE500C21-A03US RAM Replacement

Replace a faulty RAM in a Samsung Chromebook XE500C21-A03US.

Written By: huy



INTRODUCTION

This guide will help you replace your RAM in your Chromebook by showing you step-by-step on how to remove it.





TOOLS:

- [Phillips #00 Screwdriver](#) (1)
 - [iFixit Opening Tools](#) (1)
 - [Phillips #000 Screwdriver](#) (1)
-

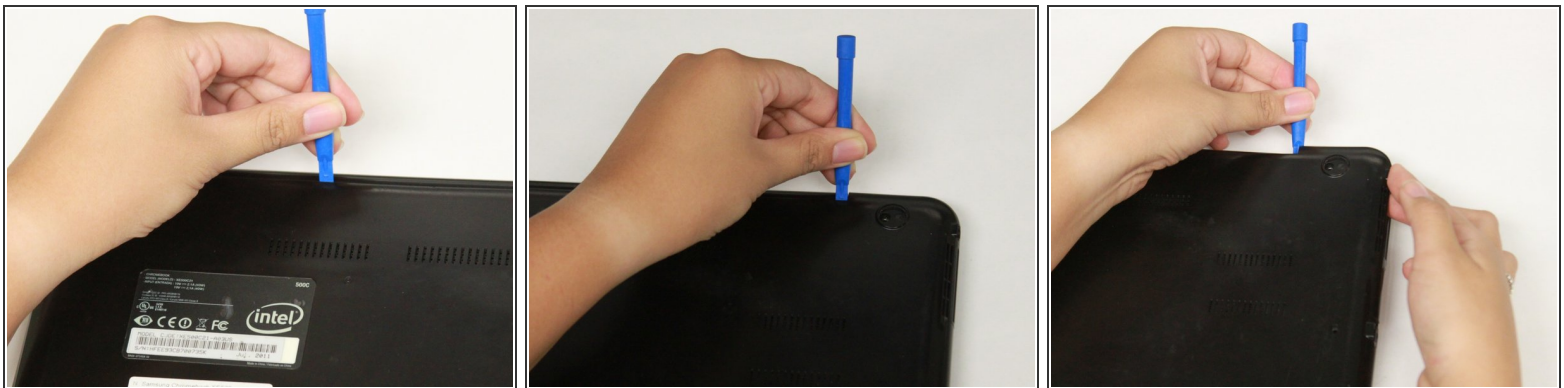
Step 1 — Back Cover



 Turn the power off before beginning this step.

-  Most Chromebooks contain rubber circle pads on each of the four corners to cover the screws. In order to remove the rubber pads, simply use any opening tool.
- Lay the Chromebook down so that the bottom cover is facing upward.
- Using a Phillips #00 screwdriver, remove all seven 5.5 mm screws from the back cover.

Step 2



- Place the opening tool in the divot between the spine of the Chromebook and the back cover.
- Slowly glide and push down the end of the opening tool along all sides of the Chromebook to detach the brackets. You will hear the brackets detach.

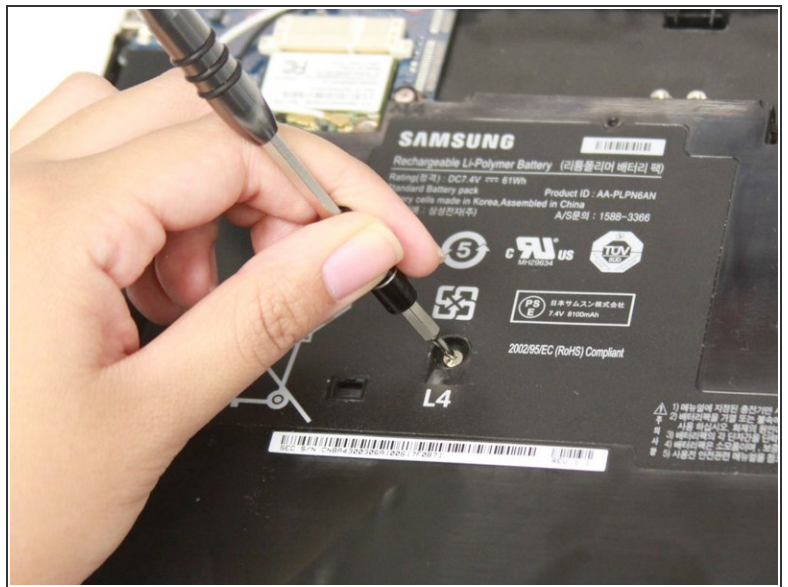
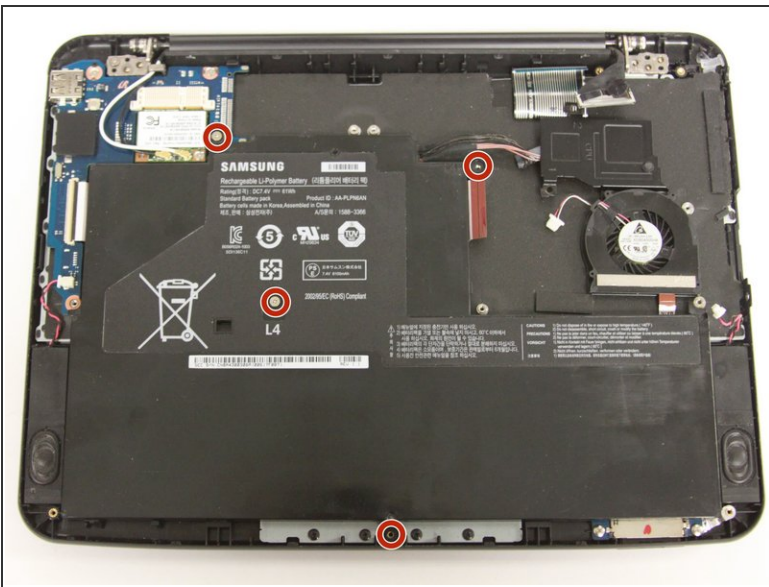
Step 3



- Using the opening tool, pry off the back cover of the Chromebook

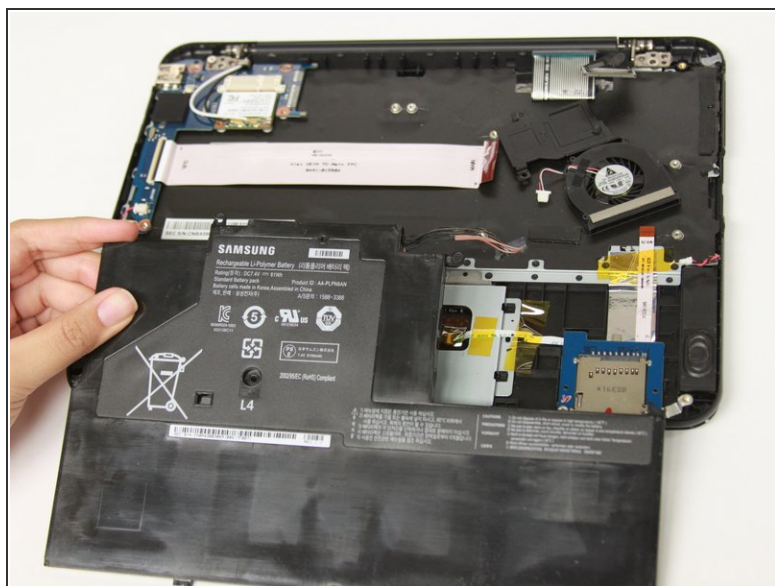
⚠ Be gentle while prying to avoid breaking the back cover.

Step 4 — Battery



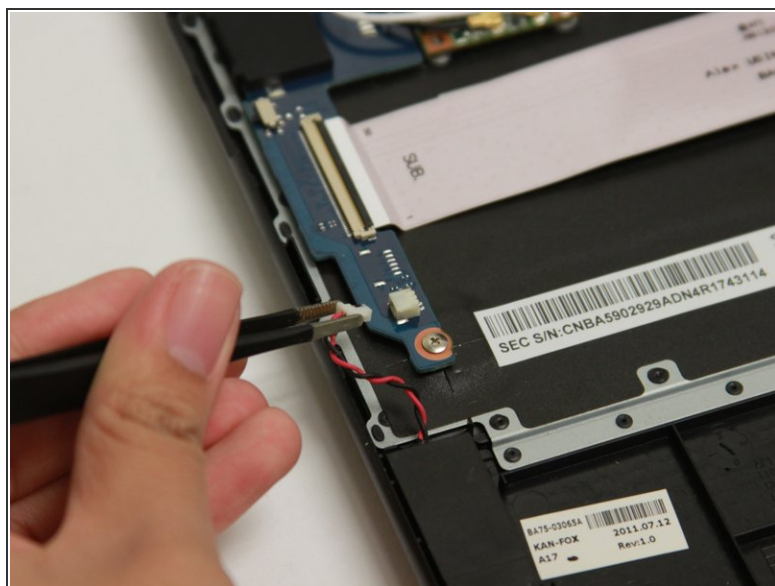
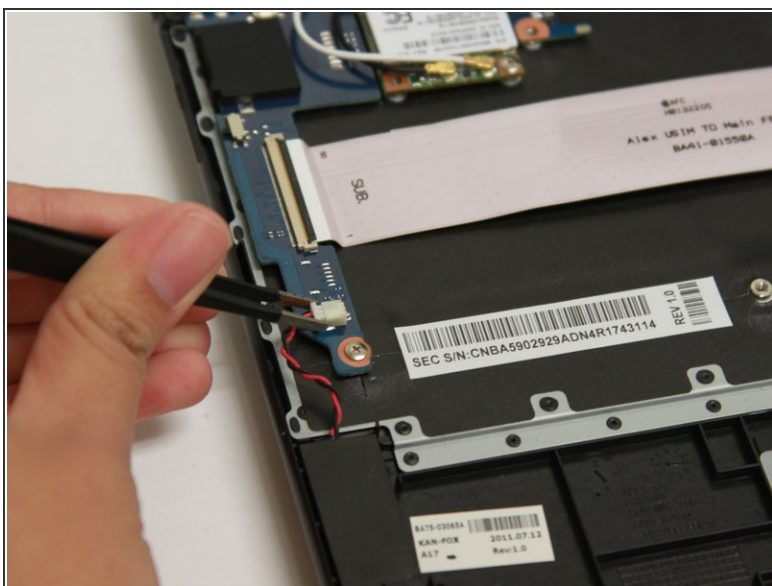
- Remove the four 3 mm screws using a Phillips #000 screwdriver.

Step 5



- Carefully lift the top of the battery then pull it away from you to remove it.
- ❗ Some batteries may be attached via a battery connector. Disconnect the battery connector by simply pulling straight up at its base.

Step 6 — RAM



- Use a blunt precision tweezer to remove the speaker cord from the RAM

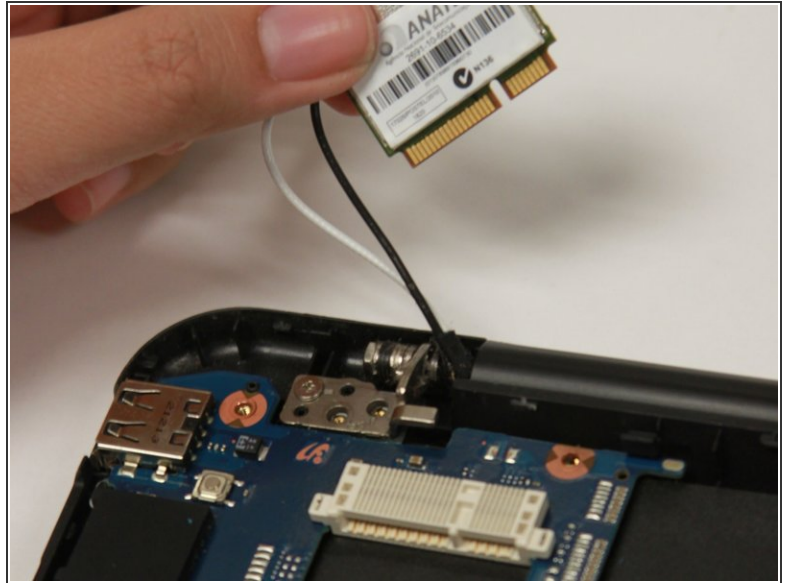
Step 7



- Using a Phillips #00 screwdriver, remove all six 2.5 mm screws .

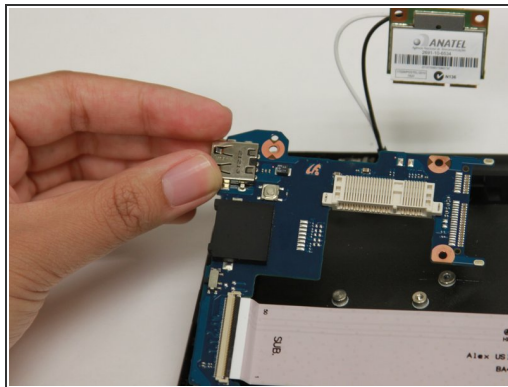
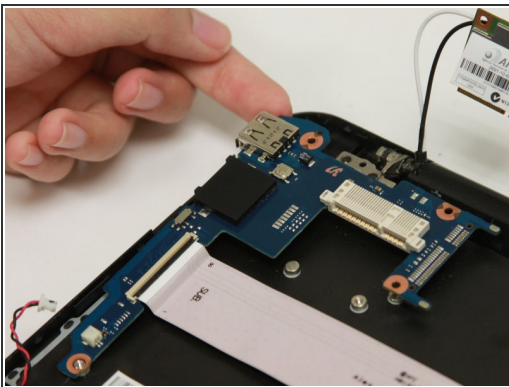
- ① Start removing the screws from the wifi card.

Step 8



- Gently lift the bottom of the wifi card then pull it towards you to disconnect it from the socket.
- ❗ Our Chromebook does not have a circuit board. Remove all units connected to the circuit board if necessary.

Step 9



- Gently lift the top left corner of the RAM and pull upward to remove it from the Chromebook.

To reassemble your device, follow these instructions in reverse order.