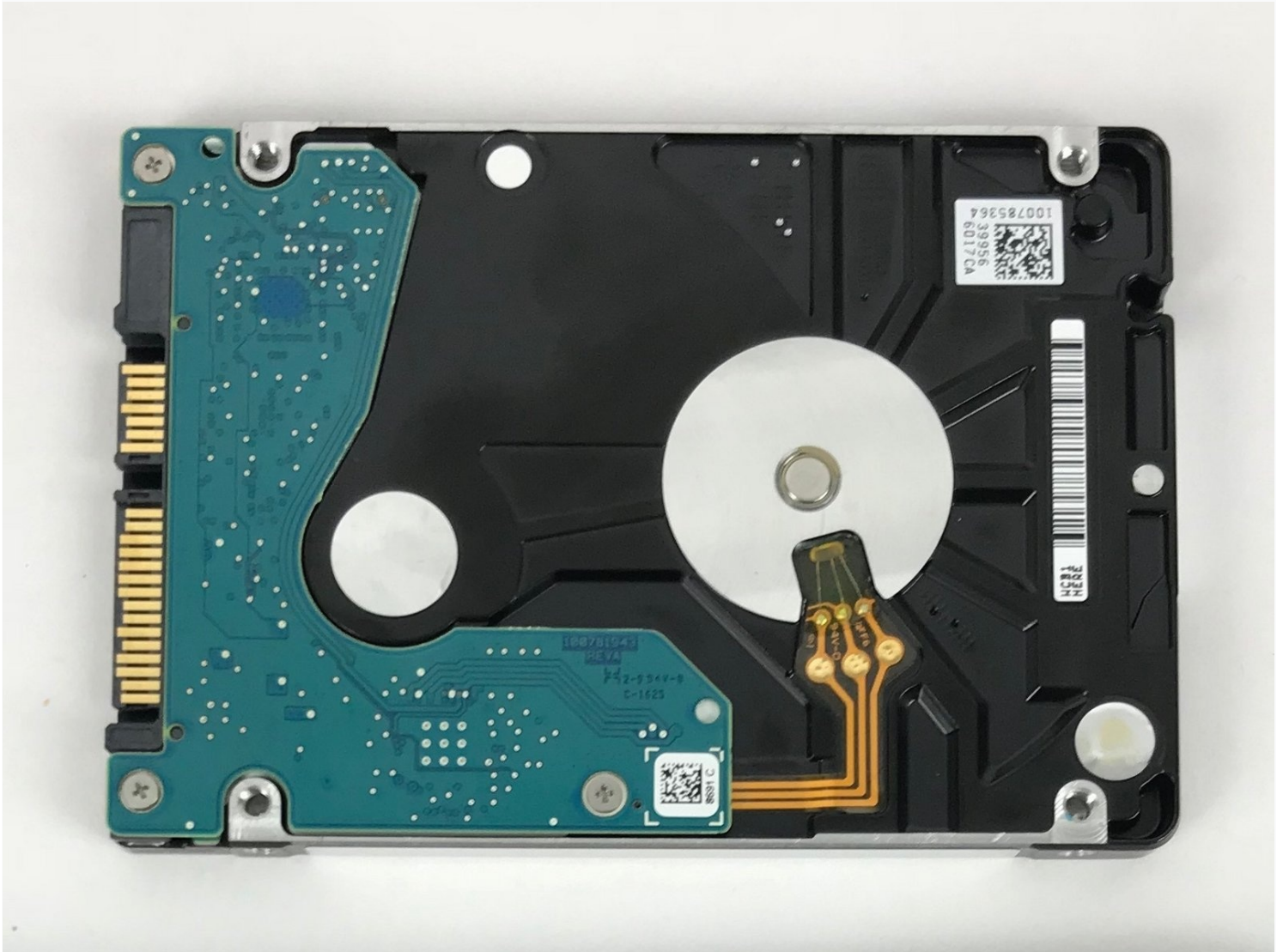




Asus Q504UA-BHI5T13 Hard Drive Replacement

This guide demonstrates how to remove the hard...

Written By: Johnathan Teav



INTRODUCTION

This guide demonstrates how to remove the hard drive from the Asus Q504UA-BHI5T13. In cases of a damaged hard drive or failure to boot, removing the defective hardware from the computer is necessary. Completing this guide may take 20 minutes, therefore some experience with electronics is recommended. Before following this guide, power down the device and remove all external peripherals and charging cords.

TOOLS:


[T5 Torx Screwdriver](#) (1)
[iFixit Opening Tool](#) (1)
[Metal Spudger](#) (1)
[Phillips #0 Screwdriver](#) (1)

PARTS:

[1 TB SSD](#) (1)
[250 GB SSD](#) (1)
[Crucial MX500 500 GB SSD](#) (1)
[2 TB SSD](#) (1)

Step 1 — Back Panel



 Ensure that the laptop is off so you do not shock yourself.

Step 2



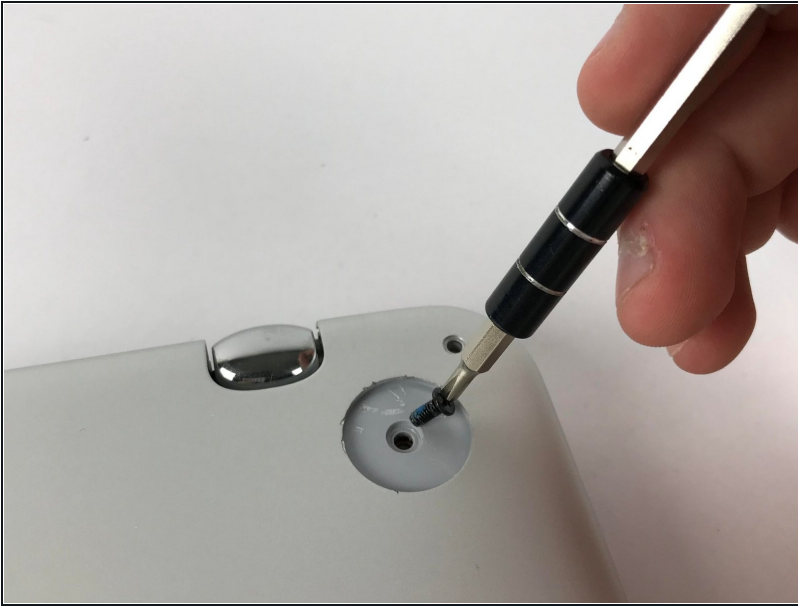
- Use the T5 Torx screwdriver to remove the ten 1mm screws located around the back cover.

Step 3



- Remove the two rubber pads nearest to you using the metal spudger.

Step 4



- Use the Phillips #0 screwdriver to remove the two 4mm screws that are under the rubber pads.

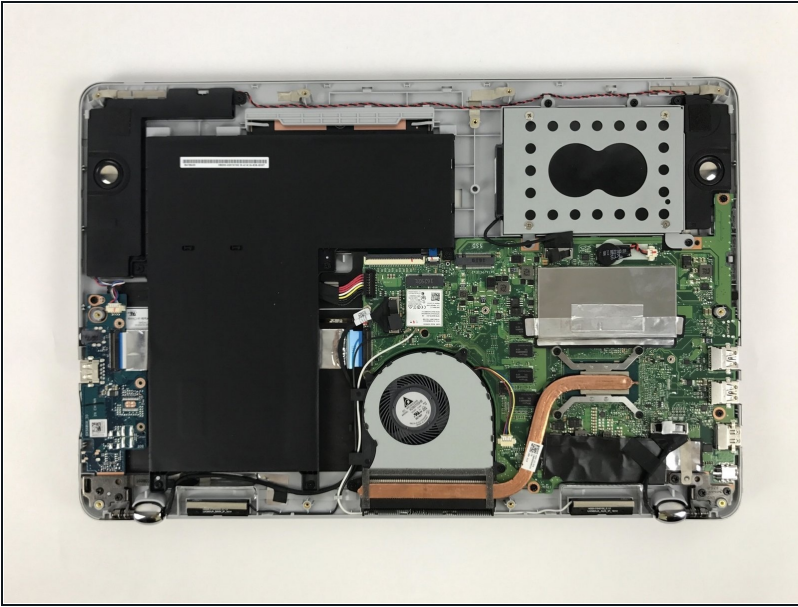
Step 5



- Insert any of the plastic opening tools into the seam to separate the back cover (it is recommended to start at the corner of the hinges). If you did it right, then the cover should pop off.

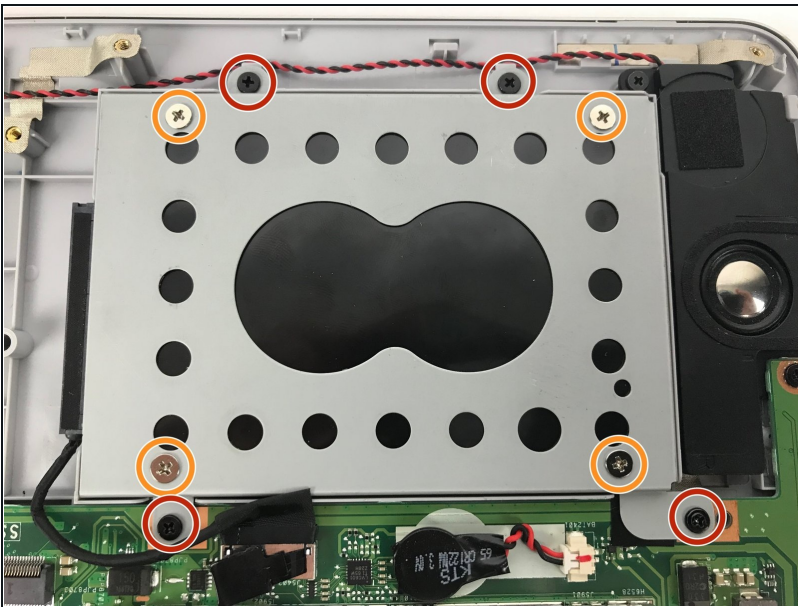
⚠ Be careful as you may damage the tabs.

Step 6 — Hard Drive



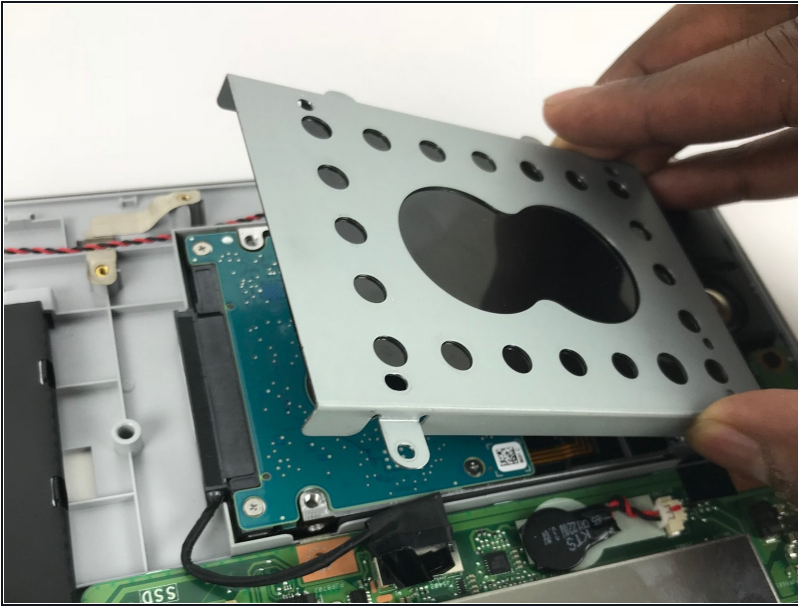
- Once the back cover is removed, have the laptop facing upside down with the hinges facing toward you.

Step 7



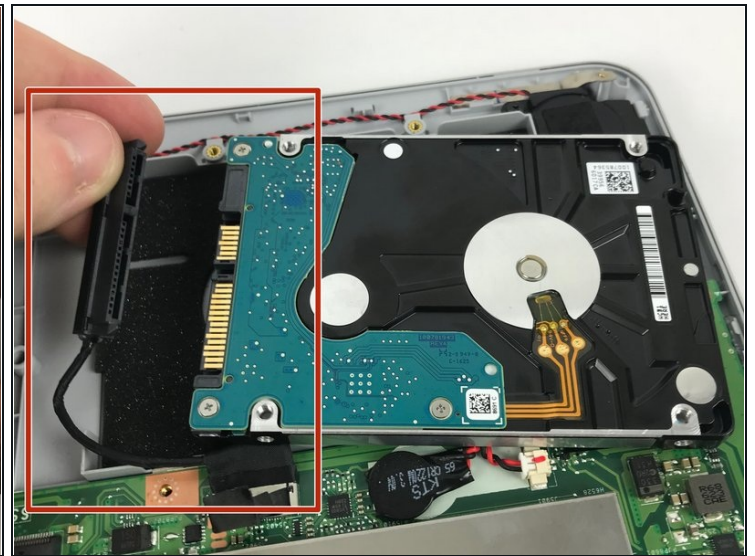
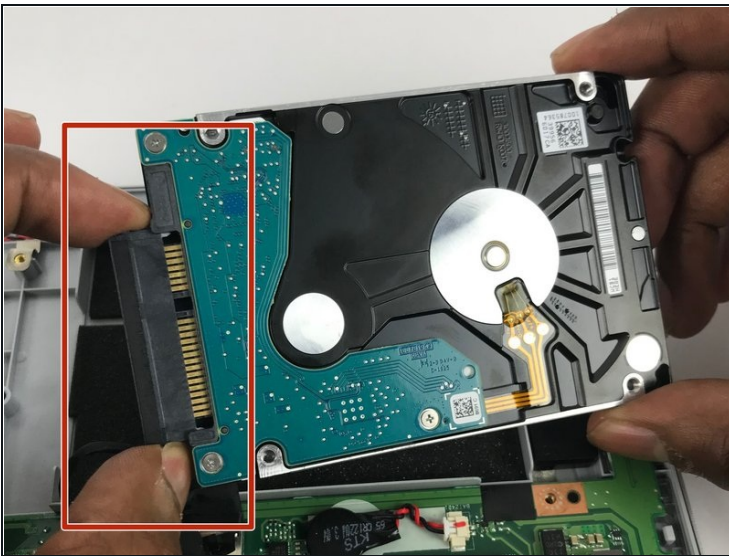
- Use the Phillips #0 screwdriver to remove the eight 4mm screws around the hard drive casing (located next to the Right [R] speaker).
- Start off with the four black outer screws so that the casing can be released from the laptop unit.
- The next sequence of screws to remove are the four silver screws.

Step 8



- Remove the cover.

Step 9



- Lift the hard drive and disconnect the hard drive sliding connector.

⚠ Be careful when removing the connector from the hard drive, as damaging that cable could cause damage to the hard drive.

To reassemble your device, follow these instructions in reverse order.

