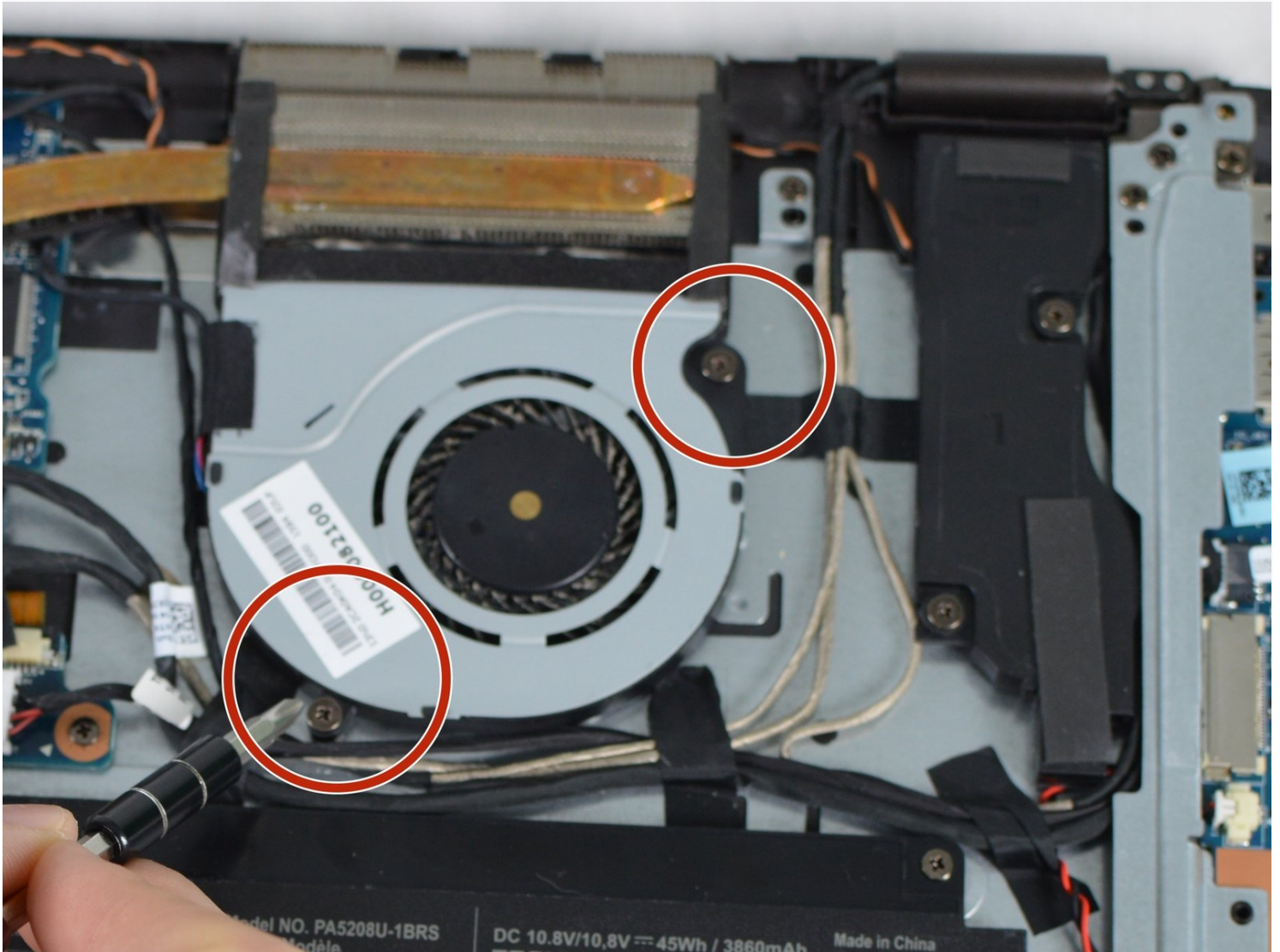




Toshiba Satellite P50W-C Fan Replacement

This guide will show you how to replace the fan...

Written By: Sarah Fordjour



INTRODUCTION

This guide will show you how to replace the fan in your Toshiba satellite. The fan keeps the computer cool when running. Be careful when removing the fan because the heat sink may detach from it.

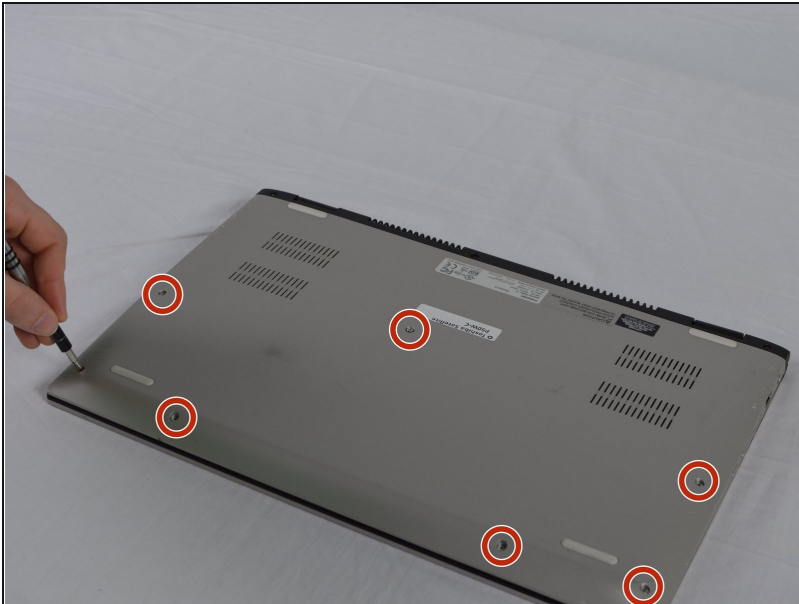
TOOLS:


Heavy-Duty Spudger (1)

JIS #1 (1)

Tweezers (1)

Step 1 — Back Cover



 Turn the laptop off, unplug the AC adapter, and any other auxiliary components.

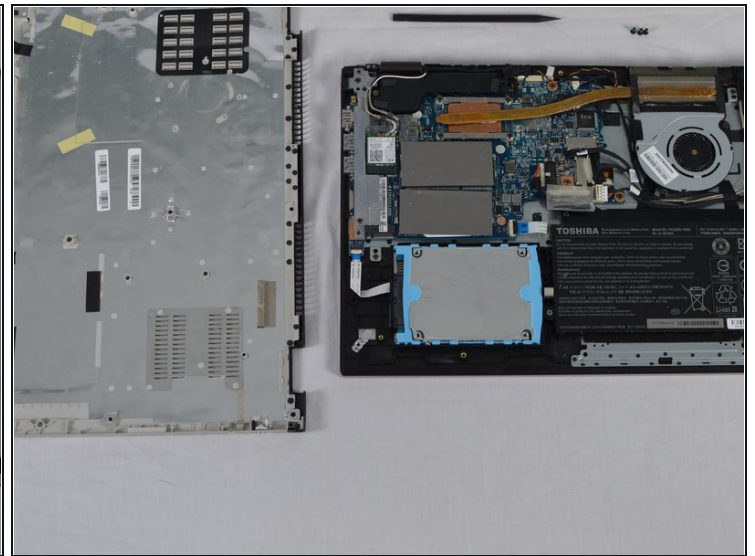
- Turn over the laptop and proceed to take out the seven 5mm silver JIS #1 head screws. If some of the screws are difficult to take out use the [tweezers](#) to help.

Step 2



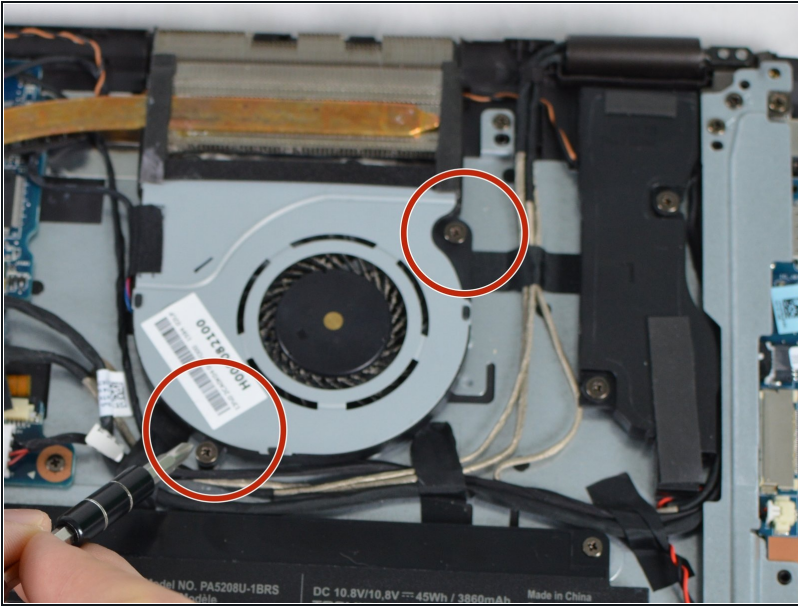
- Use the screwdriver to take out the three 5mm black JIS #1 head screws that are located on the hinge.

Step 3



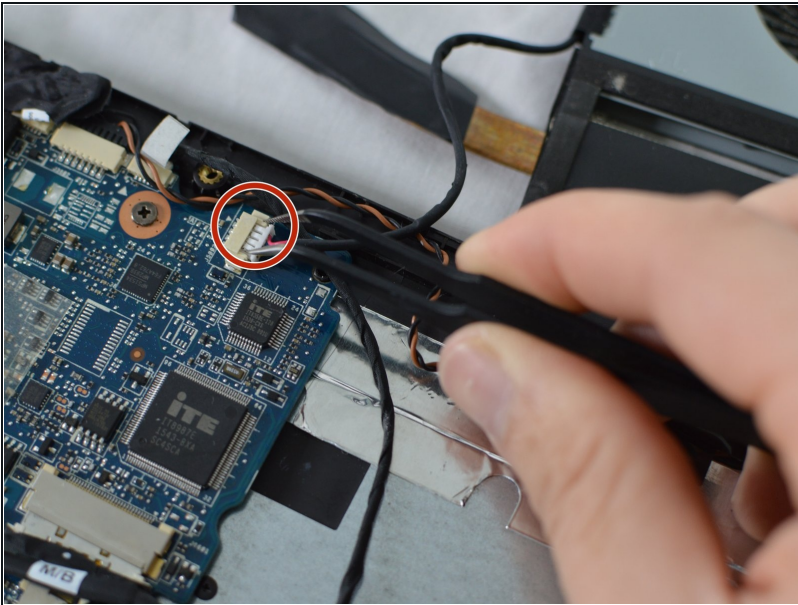
- Use the spudger to pry under the back cover until it pops off.

Step 4 — Fan



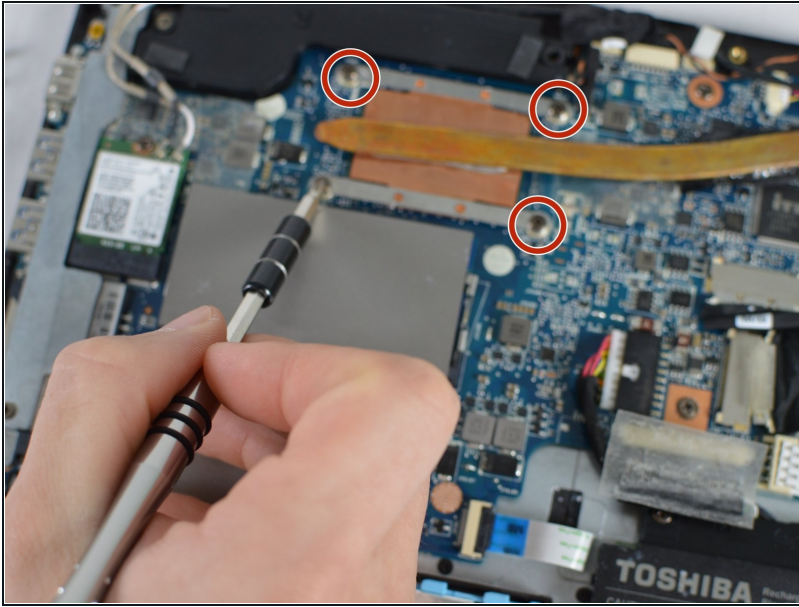
- Unscrew the two 7 mm JIS #1 head screws securing the fan to the laptop.

Step 5



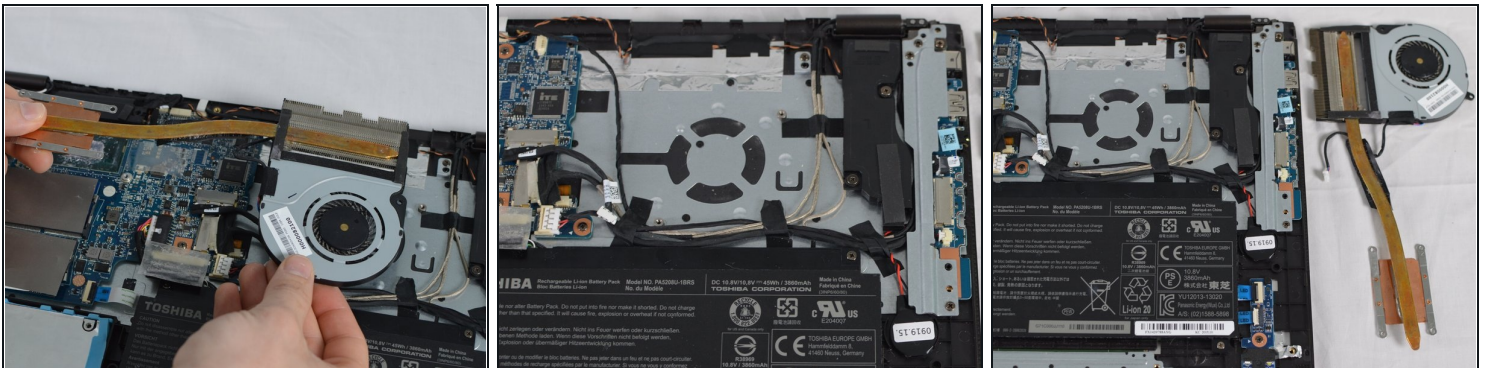
- Using [tweezers](#), disconnect power cable by gently pulling white end out from its socket.

Step 6



- Remove heat sink by unscrewing the four 3 mm JIS #1 head screws

Step 7



- Based on the quality of the fan either the clean fan or replace the fan.

To reassemble your device, follow these instructions in reverse order.