



Acer Aspire ES1-111M-C7DE Network Card Replacement

Instruction for replacing the network card, which is a small card in the laptop that allows it to connect to internet wirelessly.

Written By: Payton Stewart



This document was generated on 2020-11-28 06:07:51 AM (MST).

INTRODUCTION

When removing the network card, be sure to note the positions of the black and white cables on the network card before removing them to ensure that you put them back in the correct space.

TOOLS:

- [iFixit Opening Tools](#) (1)
 - [JIS #0 Screwdriver](#) (1)
-

Step 1 — Back Cover



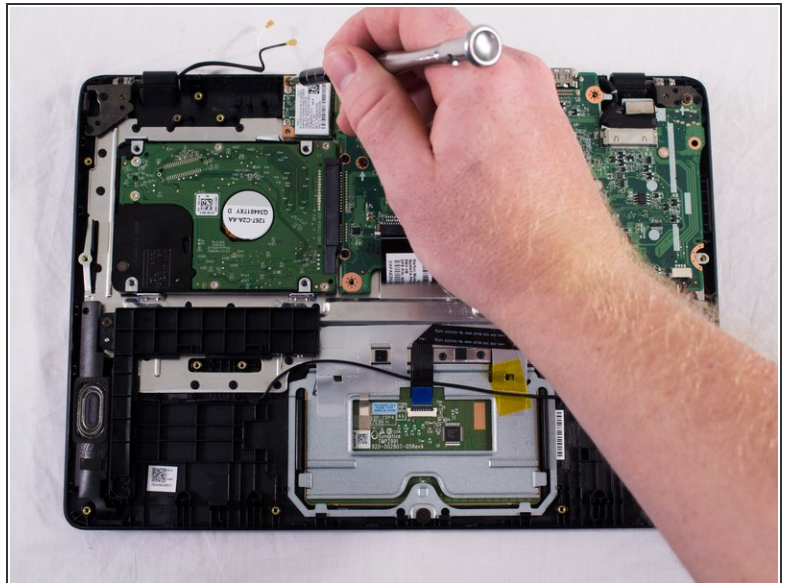
- Unscrew the 13 6.2mm screws located on the bottom of the laptop using the JIS #0 screwdriver.

Step 2



- Using a plastic opening tool, gently pry the lower case off. Place aside.

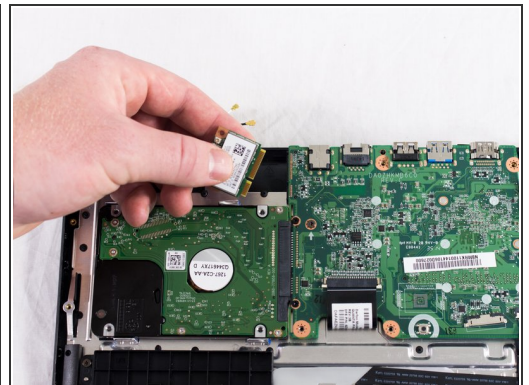
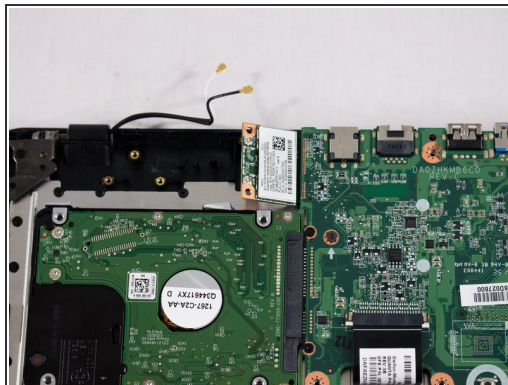
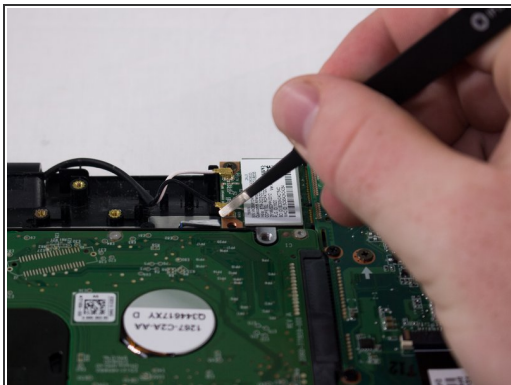
Step 3 — Network Card



i You will see a white rectangular piece next to the upper left-hand corner of the motherboard that is connected with a black cord and a white cord; this is the network card.

- Unscrew the one 6.2mm screw in the upper left-hand corner of the network card.

Step 4



- Remove the black and the white cords from the network card.
- Slide the card out of the motherboard and replace it with the new one.

To reassemble your device, follow these instructions in reverse order.