



# Acer Aspire ES1-111M-C7DE Screen Replacement

This guide will show you how to properly remove the screen and all connections and install a new screen.

Written By: Timothy Carney



This document was generated on 2020-11-28 06:07:57 AM (MST).

---

## INTRODUCTION

When removing the screen border, make sure to take caution to not damage the screen itself. When removing the screws from the screen, ensure you have a safe space to put the screws as they are very small and easy to lose.

---

### TOOLS:

- [iFixit Opening Tools](#) (1)
  - [JIS #1](#) (1)
-

## Step 1 — Screen



- Open the laptop screen to the farthest back position
- Using the plastic opening tool, pry off the screen border and completely remove it.

## Step 2



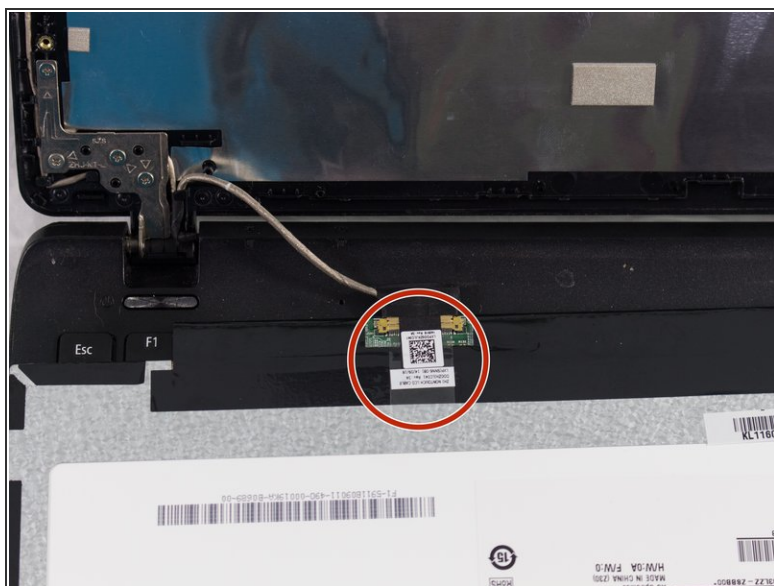
- •Using the JIS #1 screwdriver, remove the 4 3mmscrews from each corner of the screen

## Step 3



- Remove the screen and turn it face down

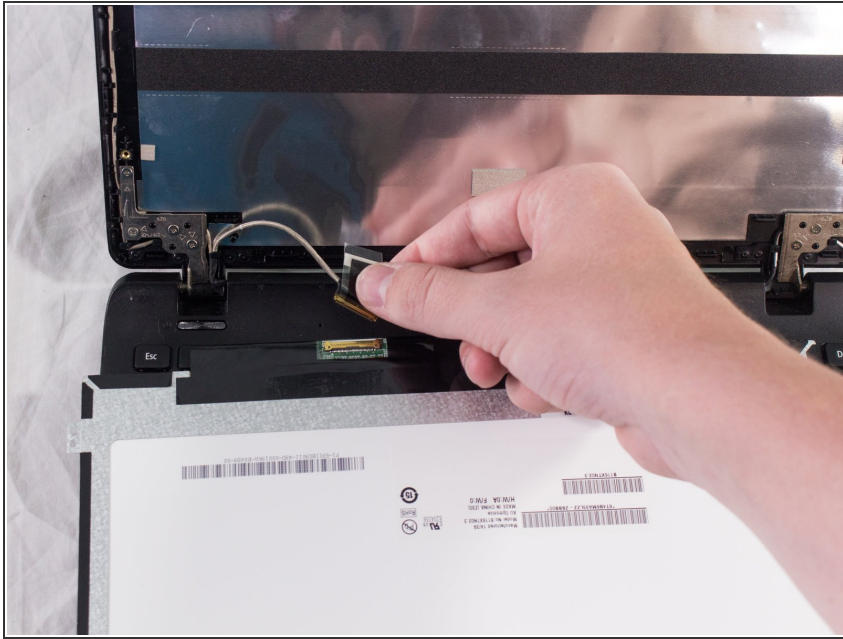
## Step 4



- Carefully pull back the tape on the connector until the connector is fully revealed



## Step 5



- Carefully remove the connector from the old screen and connect it to your new, compatible screen

To reassemble your device, follow these instructions in reverse order starting from Step 3.