



Philips Norelco Shaver 2100 Battery Replacement

Use this guide to replace the battery of your...

Written By: Marshall MacClellan



INTRODUCTION

Use this guide to replace the battery of your Philips Norelco 2100 as it may be defective.



TOOLS:

- [Metal Spudger](#) (1)
- [TR8 Torx Security Screwdriver](#) (1)



PARTS:

- [AA Battery](#) (1)

Step 1 — Casing



- Remove the single screw on the back casing using a T8 Torx screwdriver.

Step 2



- Turn the shaver so that it is facing you.
- Press the button on the shaver head to open it.

Step 3



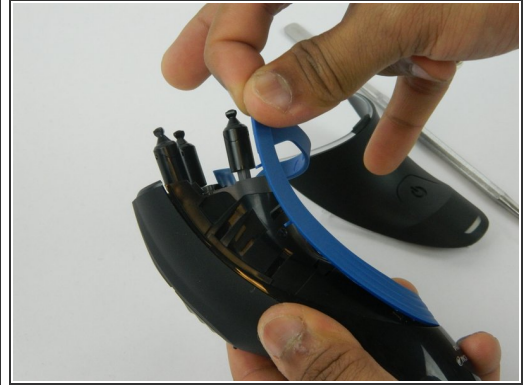
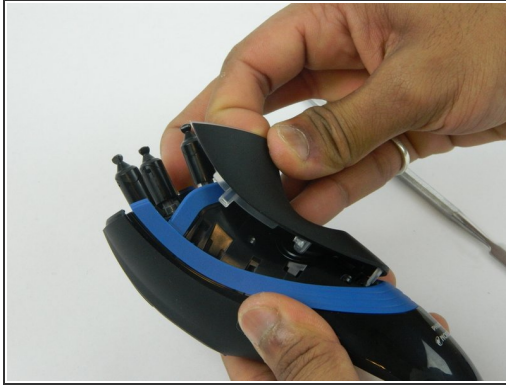
- Remove the two 10.1 mm screws inside the shaver head using a T8 Torx screwdriver.

Step 4



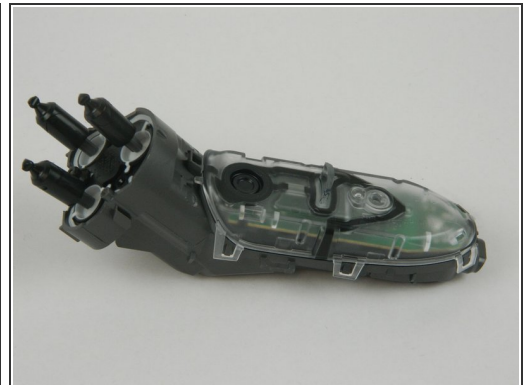
- Lift the shaver head off of the casing.

Step 5



- Gently pull the black and blue casing apart using a metal spudger.

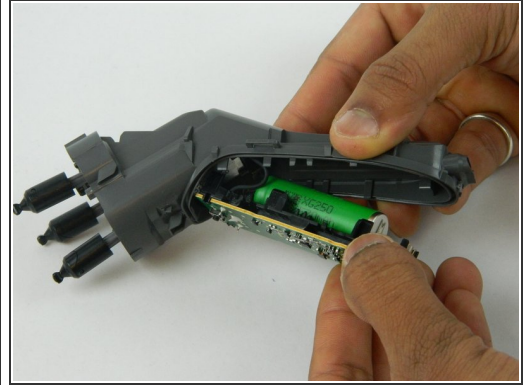
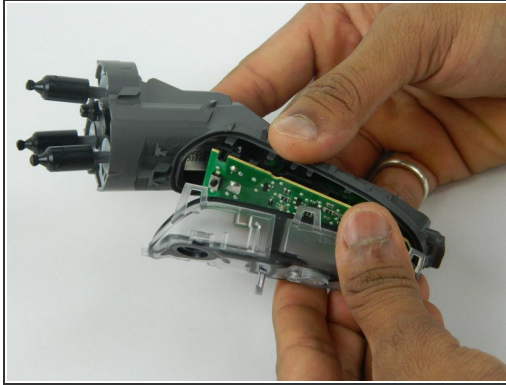
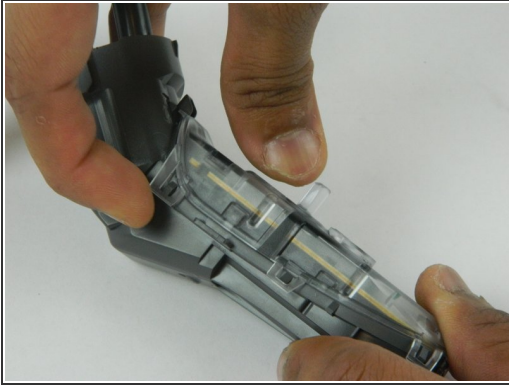
Step 6



- Pry the remaining casing open using a metal spudger.

⚠ Be careful using a metal spudger, as it may result in damaging the case.

Step 7 — Battery



- Remove the clear case that holds the circuit board by lifting the latches on the sides and then pulling gently.

Step 8



- Located directly behind the circuit board, remove the battery from the device.

To reassemble your device, follow these instructions in reverse order.