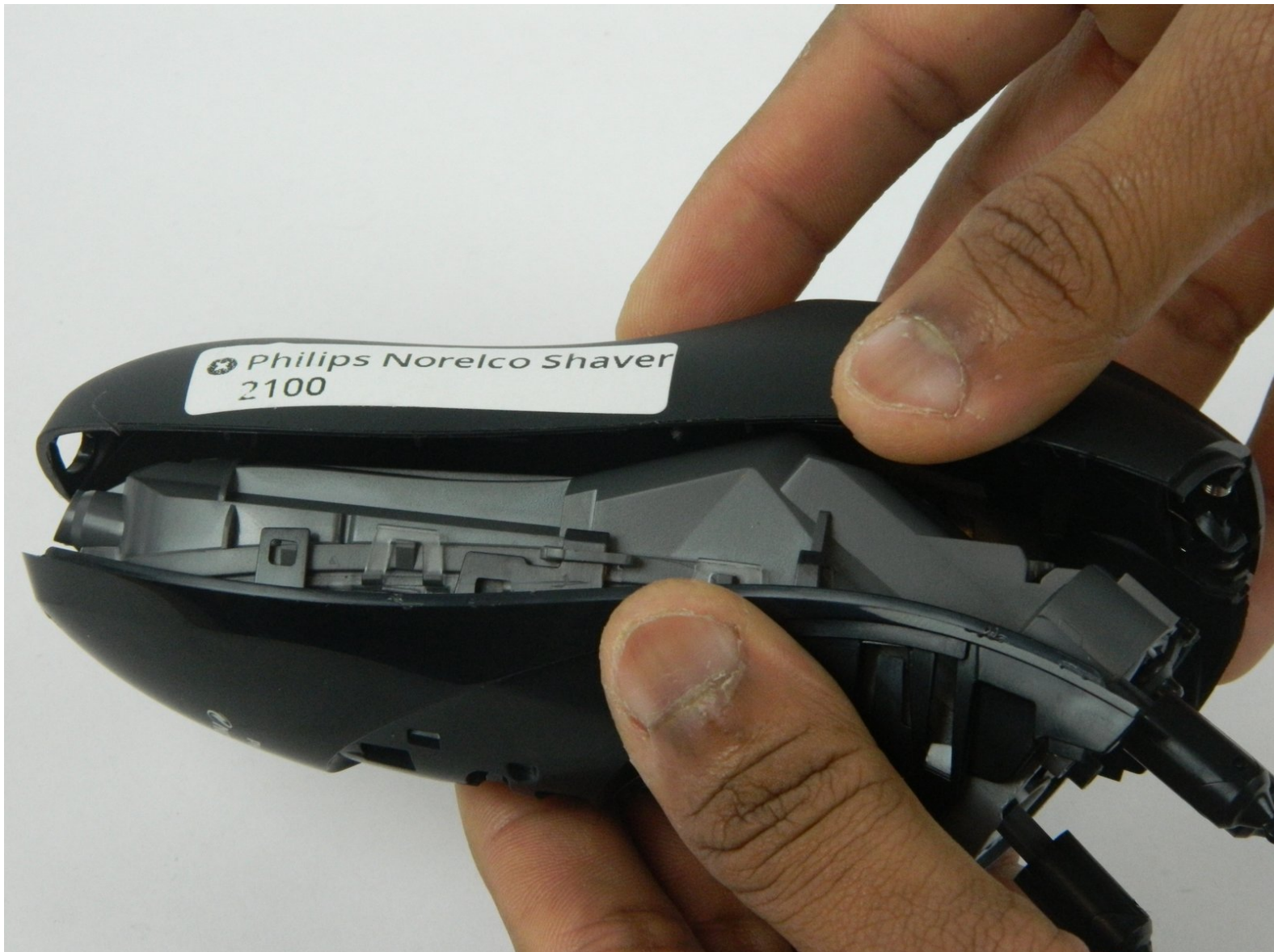




# Philips Norelco Shaver 2100 Casing Replacement

This guide will teach you how to open the shaver and replace the casing.

Written By: Jose Moya



---

## INTRODUCTION

This guide will show the steps required to open the shaver and replace the casing. Useful if you have an extra shaver.



### TOOLS:

- [Metal Spudger](#) (1)
  - [T8 Torx Screwdriver](#) (1)
-

## Step 1 — Casing



- Remove the single screw on the back casing using a T8 Torx screwdriver.

## Step 2



- Turn the shaver so that it is facing you.
- Press the button on the shaver head to open it.



### Step 3



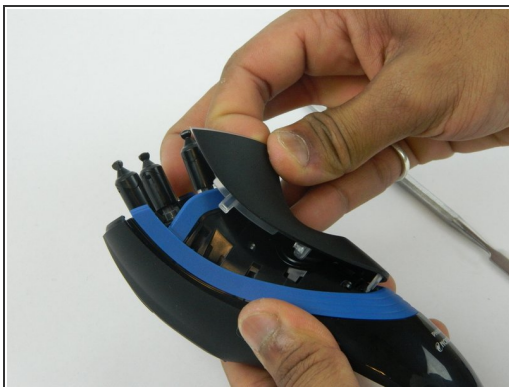
- Remove the two 10.1 mm screws inside the shaver head using a T8 Torx screwdriver.

### Step 4



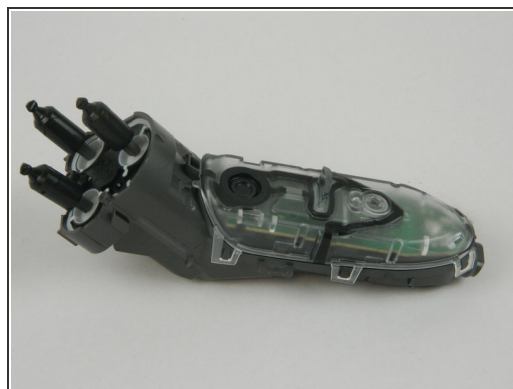
- Lift the shaver head off of the casing.

## Step 5



- Gently pull the black and blue casing apart using a metal spudger.

## Step 6



- Pry the remaining casing open using a metal spudger.

⚠ Be careful using a metal spudger, as it may result in damaging the case.

To reassemble your device, follow these instructions in reverse order.