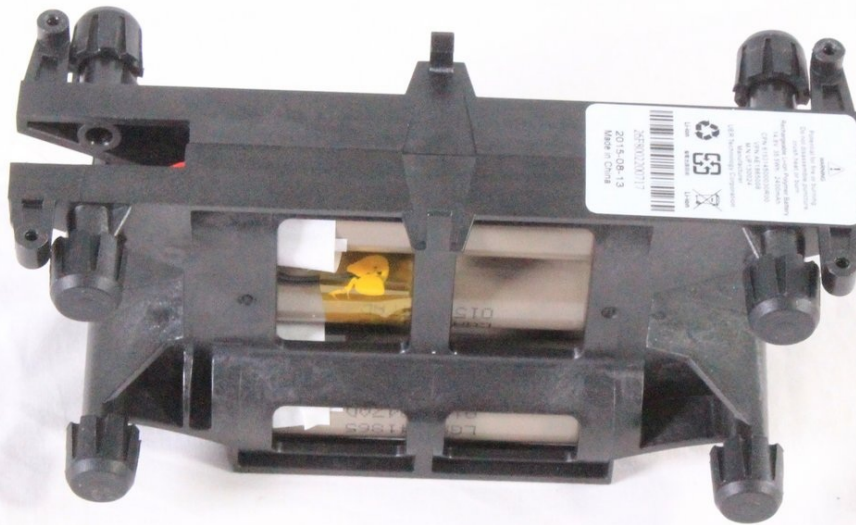




Fugoo Style XL Battery Replacement

If the battery of your Fugoo Style XL Portable...

Written By: James Gifford



INTRODUCTION

If the battery of your Fugoo Style XL Portable Bluetooth Speaker has lost its ability to hold a charge, it may need to be replaced. The Fugoo Style XL includes a rechargeable lithium-ion battery that can stop functioning after a number of repeated charge cycles. This guide shows the steps and tools necessary for disassembling the speaker so that a new battery can be installed. Some of these steps require careful handling of wires and other circuit components.

If you think that your battery is swollen, [review this guide](#) to learn how to handle it safely. Make sure to power down your device before you begin.

TOOLS:

[64 Bit Driver Kit](#) (1)

[TR9 Torx Security Screwdriver](#) (1)

[Tweezers](#) (1)

[iFixit Opening Tool](#) (1)

Step 1 — Fabric Case



- Using your hand, unscrew the large screws underneath the speaker.

Step 2



- Using your hand, gently lift the large plastic tab secured to the rubber holding.
 - After lifting the tab, slide the speaker out of its case.

⚠ Ensure the tab is lifted only slightly above the rubber holding. Bending the plastic tab too far could result in damage to the case.

Step 3 — Motherboard



- Remove the 8 screws (4 on each side) that hold the covers that conceal the bass speakers. Remove these 3mm screws using a #2.0 Hex screwdriver.

Step 4



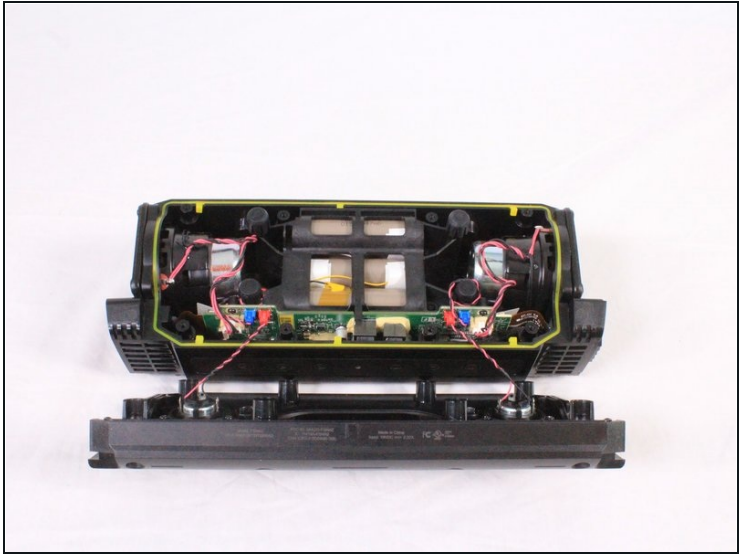
- Using your hand, pull the covers away from the speaker.

Step 5



- Use a #2.0 Hex screwdriver to unscrew the 8 screws shown in the image.

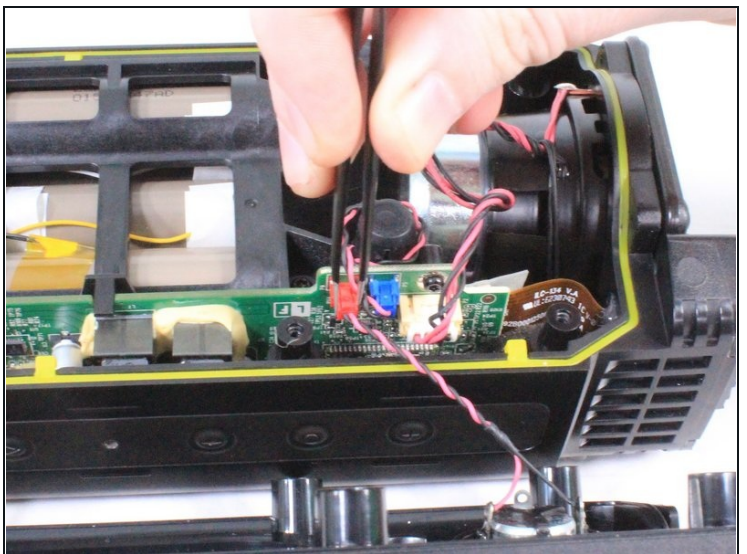
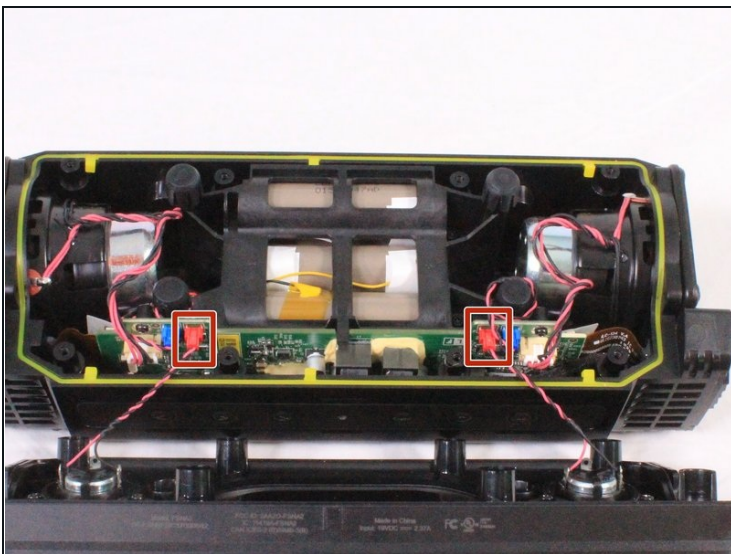
Step 6



- Gently pull apart the front casing from the back casing.

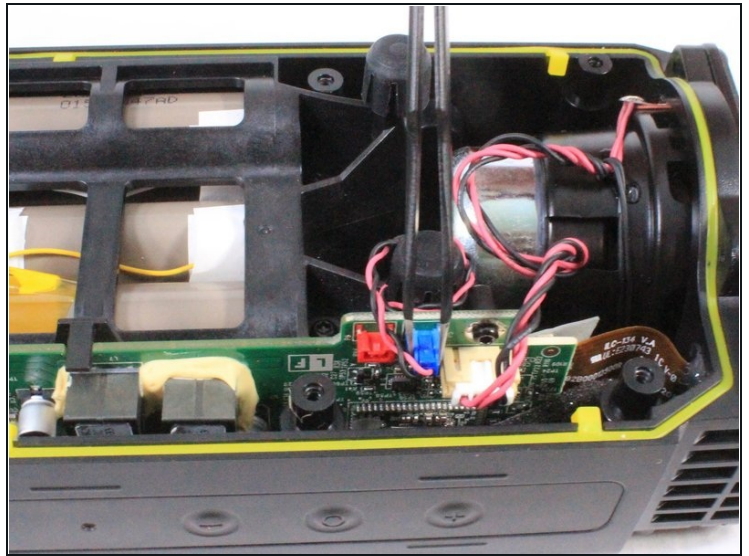
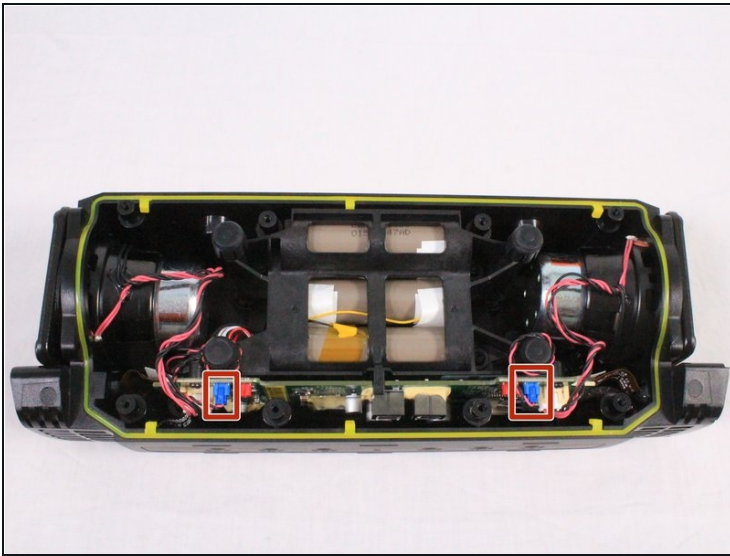
⚠ Speakers on the front casing have wires directly connected to the motherboard. Pulling off the casing with force will result in damage.

Step 7



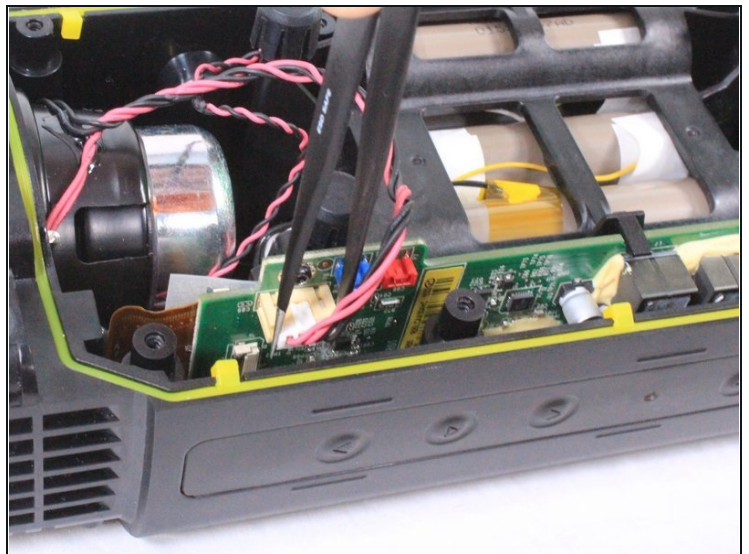
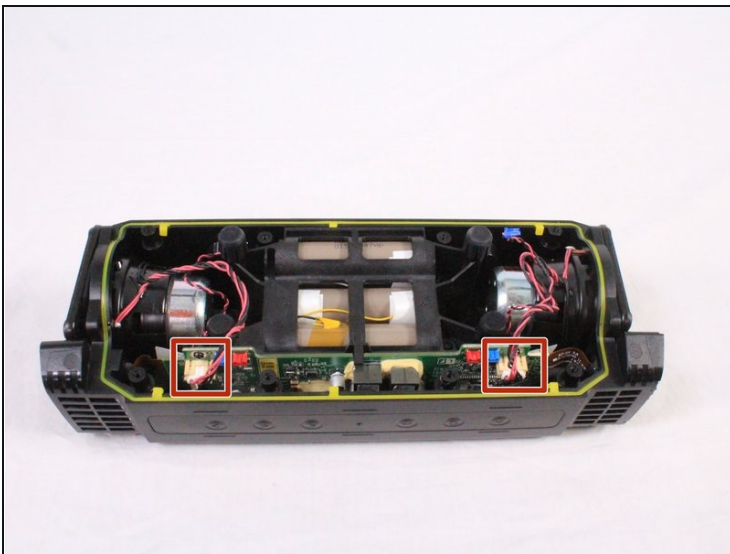
- Using a pair of [tweezers](#) or your hand, carefully remove the red bundled cable connectors from the motherboard.
- When the red bundled cable connectors are disconnected, set the outer casing aside.

Step 8



- Untangle any blue bundled cable connectors and gently remove them from the motherboard using a pair of tweezers.

Step 9



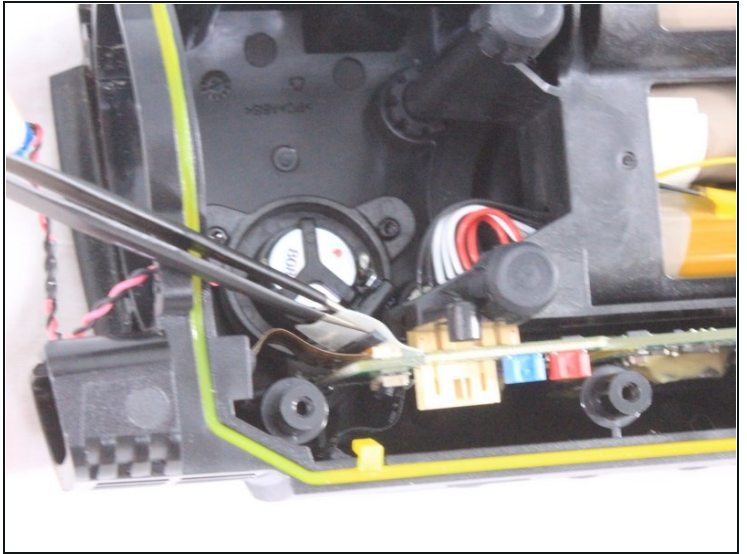
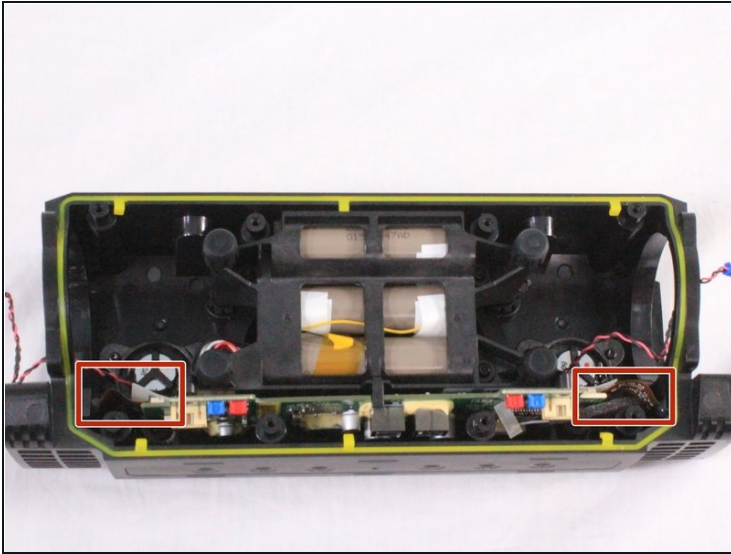
- Carefully untangle and remove the white bundled cable connectors from the motherboard.

Step 10



- Using a T9 screwdriver, remove the 8 screws (4 on each speaker) surrounding the midwoofers.
- Using your hand, carefully remove the midwoofers.

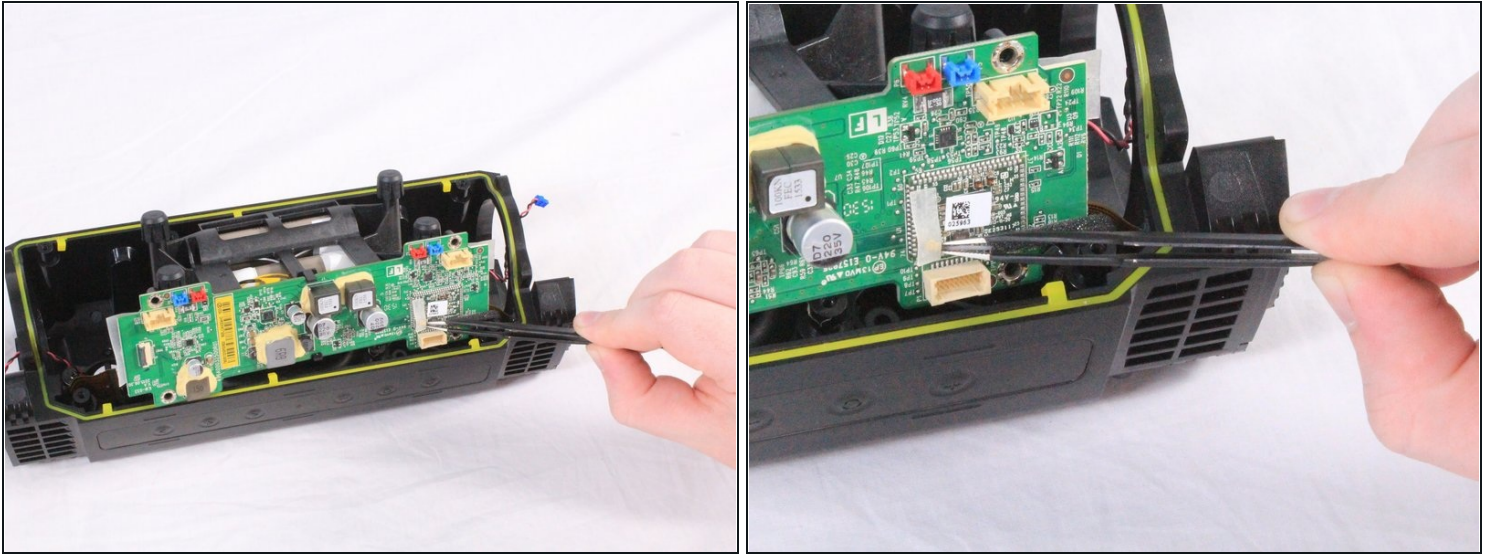
Step 11



- Using a pair of tweezers, lift the padded holding that secures the ZIF connector to the motherboard. The connector will release from the motherboard once the padding is lifted.

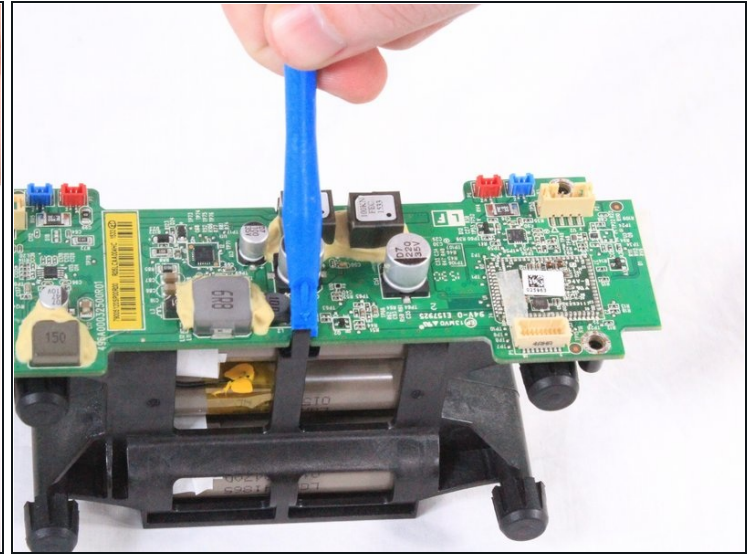
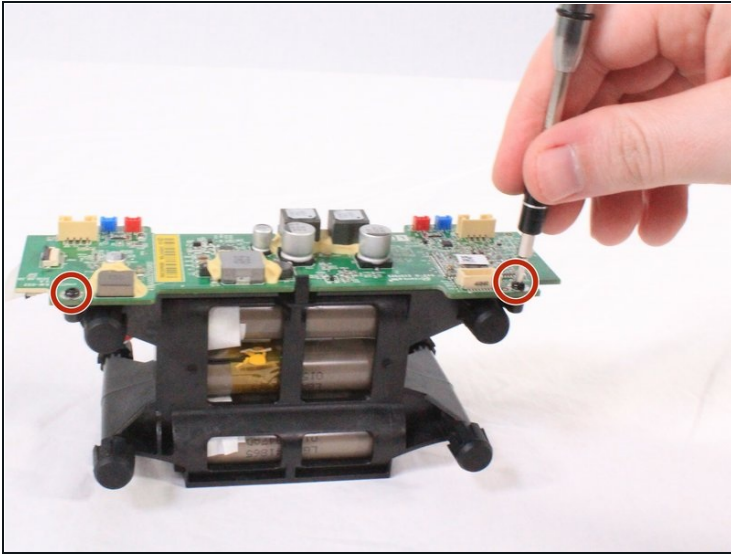
⚠ Do not pull on the cables themselves. Doing so can damage the cables. Always remove the ZIF connector by gently lifting the padding securing them to the motherboard.

Step 12



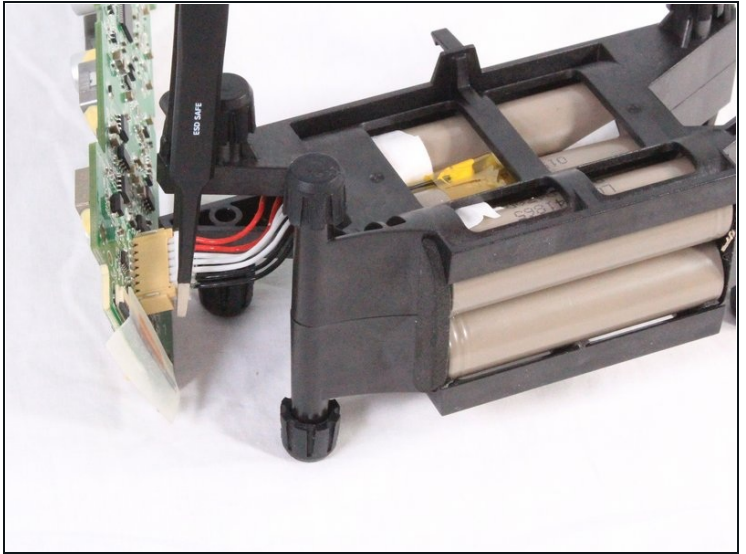
- Carefully lift the battery and motherboard unit halfway out of the casing. The motherboard is connected to the battery directly.
- ⚠ There is a small coaxial cable connected underneath the motherboard. Using a pair of tweezers, carefully disconnect and remove the cable from under the adhesive tape.
- When the cable is disconnected, fully remove the motherboard and battery unit.

Step 13



- Remove the 3mm screws using a #2.0 Hex screwdriver. There are 4 of these screws (2 on each side) that connect the motherboard to the battery unit.
 - When the screws are removed, use an iFixit opening tool to remove the motherboard from the two clamps securing it to the battery pack.
- ⚠ Beware! The motherboard is not fully disconnected from the battery even when removed from the clamps.

Step 14



- Using tweezers or your hand, carefully disconnect the bundled cables connecting the battery to the motherboard.

Step 15 — Battery



- Insert wisdom here.

To reassemble your device, follow these instructions in reverse order.