



Buffalo WZR-300HP Wireless Router Teardown

A quick teardown and photos of the Buffalo WZR-300HP wireless router.

Written By: Alexander Williams

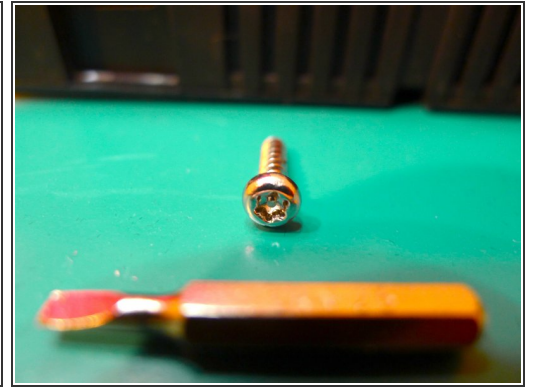




TOOLS:

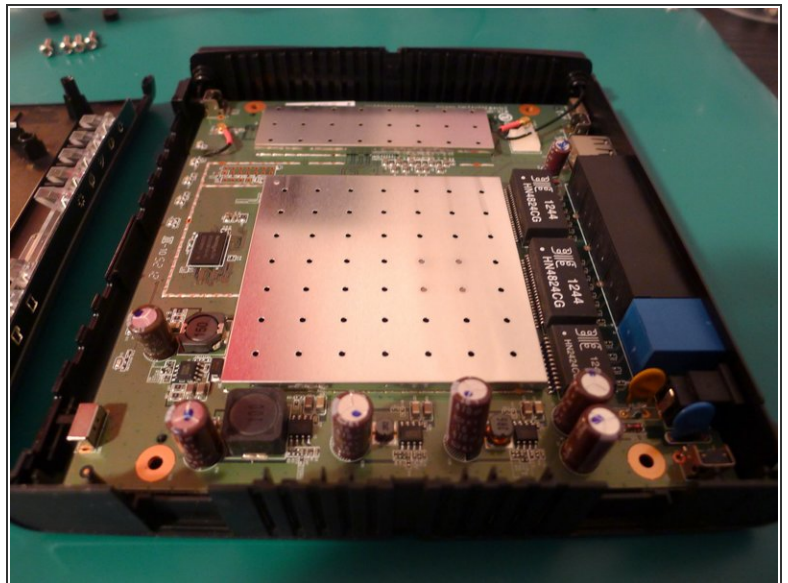
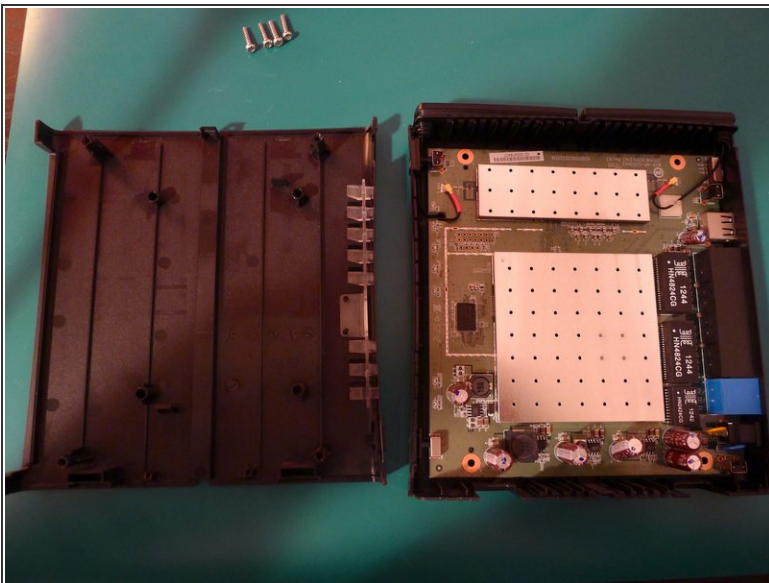
- [Flathead Screwdriver](#) (1)
-

Step 1 — Remove 4 screws



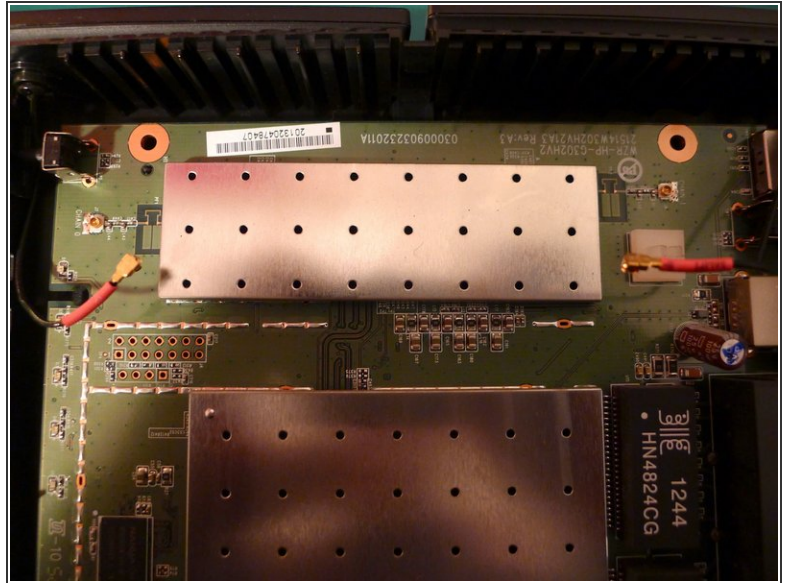
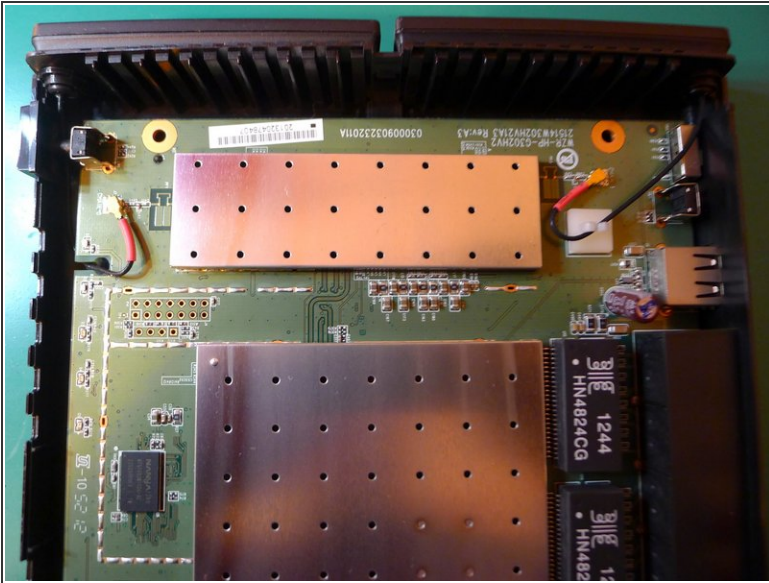
- Remove four rubber grommets, They are glued well, so it requires some force.
- The screw head is non-standard (Torx T9 or T10) with a "security pin".
 - If you lack the Torx bit, you can use a thin flathead screwdriver (appx. 1.5mm) to jam into the slot. :)
 - On my router, I could easily snap off that screw head pin, allowing me to use standard bits.

Step 2 — Separate front panel



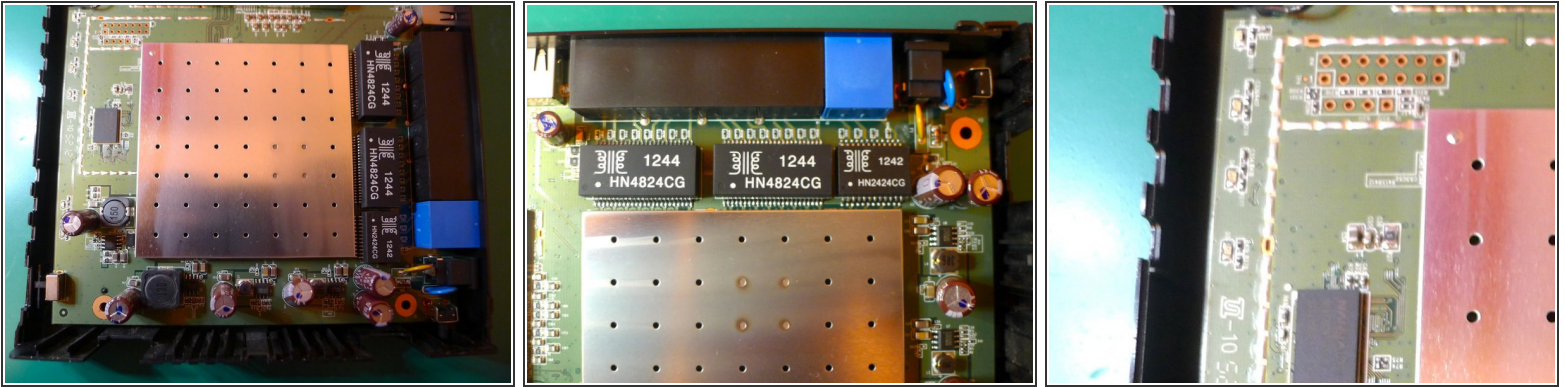
- No need to pry, just pull them apart.

Step 3 — Antennas



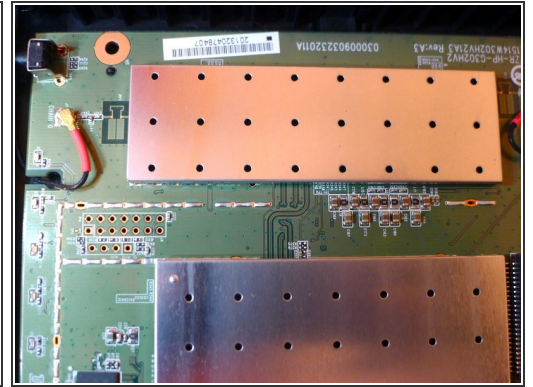
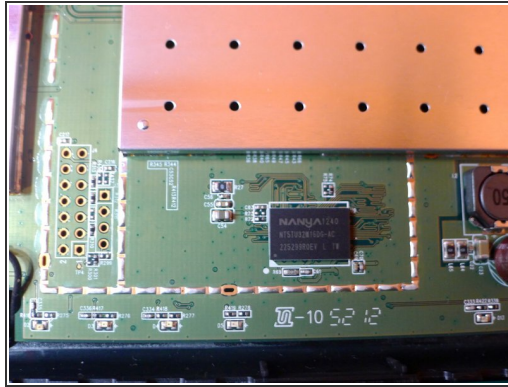
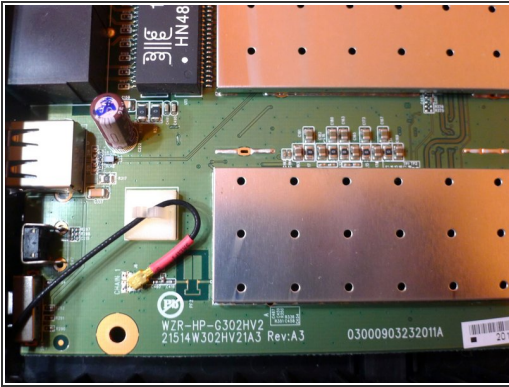
- There are two fastened antennas

Step 4 — Internals top (pt.1)



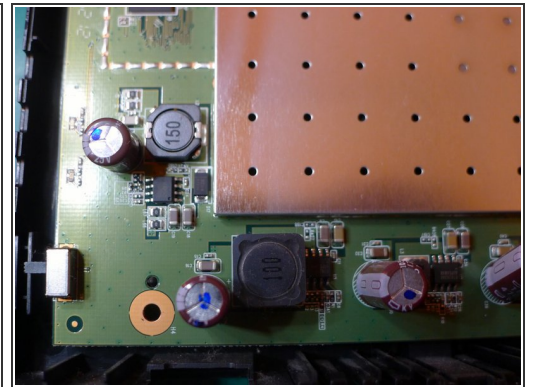
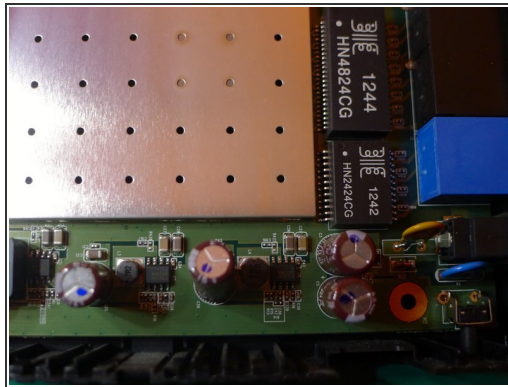
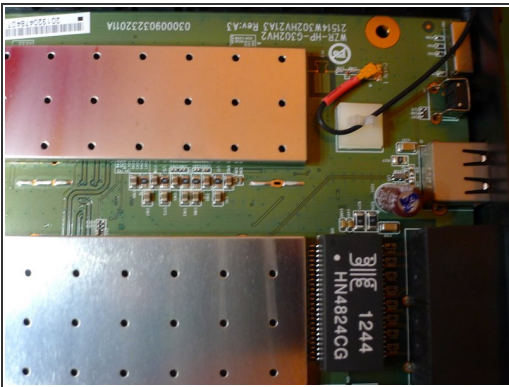
- Serial interface (4 "pins") are unsoldered, and can be found in the top-right corner of the board (if the Ethernet ports were facing you).
 - A close-up image crop shows the 4 serial through-hole "pins". Pinout:
 - pin1 : VCC +3.3V
 - pin2 : GND
 - pin3 : TX
 - pin4 : RX
 - If you wish to connect using a USB TTL adapter, I suggest soldering female "jumper" wires and routing those outside the case. DO NOT CONNECT TO VCC (do not apply external power!)
 - The serial port is enabled by default, and you can watch Linux boot. If you Google around, you can find how to login to the console (this varies by OS installed on the router).

Step 5 — Internals top (pt.2)



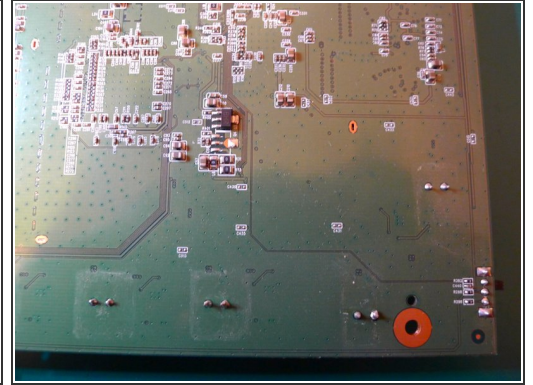
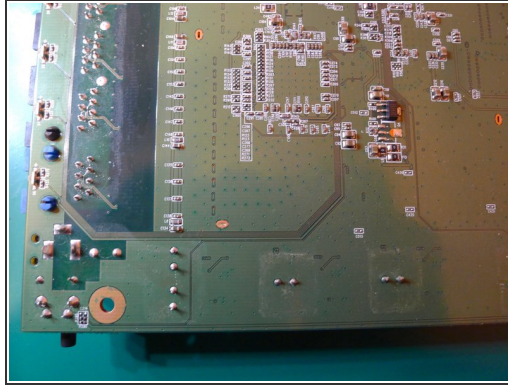
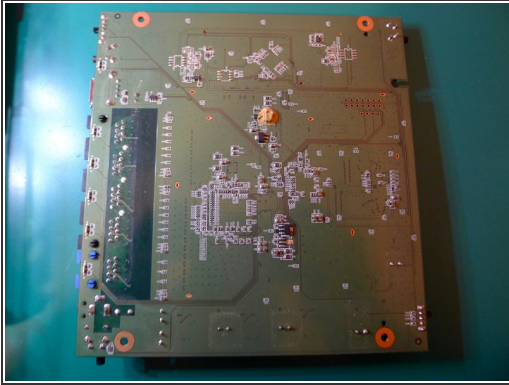
- Insert wisdom here.

Step 6 — Internals top (pt.3)



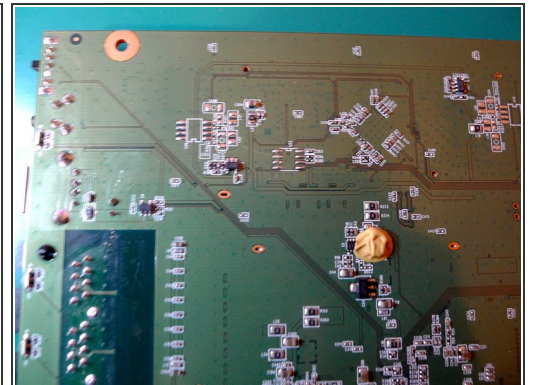
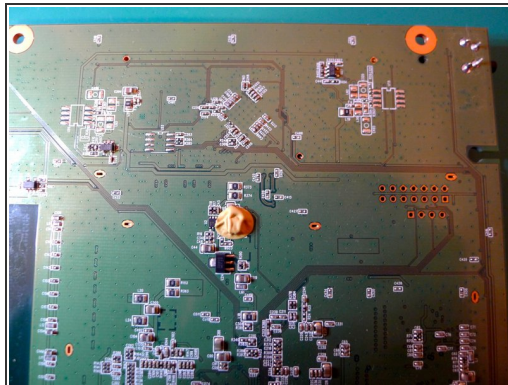
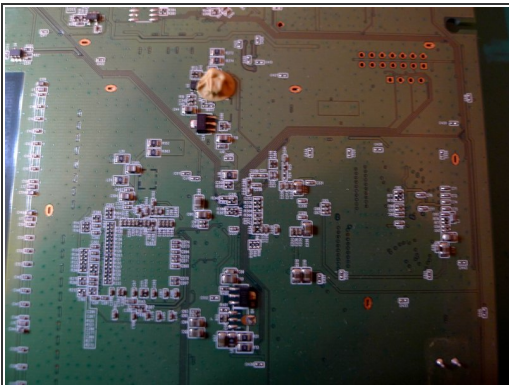
- Insert wisdom here.

Step 7 — Circuit board bottom (pt.1)



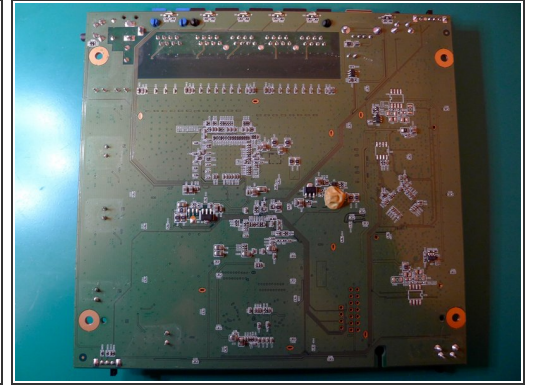
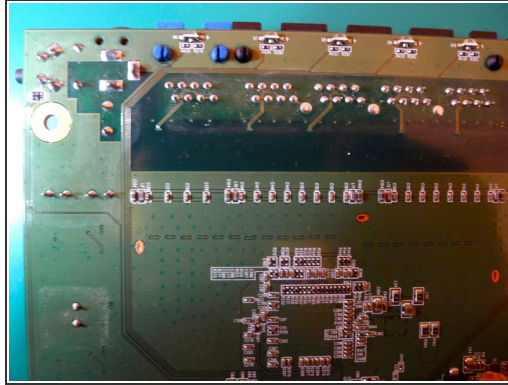
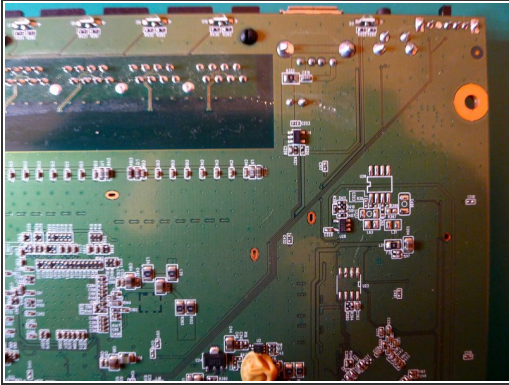
- Insert wisdom here.

Step 8 — Circuit board bottom (pt.2)



- Insert wisdom here.

Step 9 — Circuit board bottom (pt.3)



- Insert wisdom here.