



# Toshiba Satellite L655D-S5095 DC Jack Replacement

This guide teaches you how to replace the DC jack in a Toshiba Satellite L655D-S5095 laptop.

Written By: Joseph Sctbunio



# INTRODUCTION

Outline what you are going to teach someone how to do.



## TOOLS:

- [Phillips #1 Screwdriver](#) (1)
- [iFixit Opening Tools](#) (1)
- [Spudger](#) (1)



## PARTS:

- [PC3-10600 2 GB RAM Chip](#) (1)
- [PC3-10600 4 GB RAM Chip](#) (1)

## Step 1 — Battery



- Locate the battery locks on the bottom of the laptop.
- Slide the right lock outwards, until it locks into place.
- Slide and hold the left lock outwards and hold it in place.

## Step 2



- While holding the lock in place, slide the battery out towards you.

## Step 3 — Keyboard



- Using a #1 Phillips screwdriver, remove the 5.8 mm screw in the battery slot.

## Step 4



- Use a plastic opening tool to pry off the plastic panel above the keyboard.

## Step 5



- Unscrew the four 3.7 mm screws at the top of the keyboard using a #1 Phillips screwdriver.

## Step 6



- Slowly lift the keyboard out, up and towards the screen.

**⚠ Do not try to remove the keyboard completely because it is still attached to the motherboard.**

## Step 7



- Using a plastic opening tool, flip the ZIF connector up to release the ribbon and the keyboard.

## Step 8 — RAM



- Unscrew the three 4.6 mm screws holding the panel using a #1 size Phillips head screwdriver. The panel is centered on the bottom of the laptop.

## Step 9



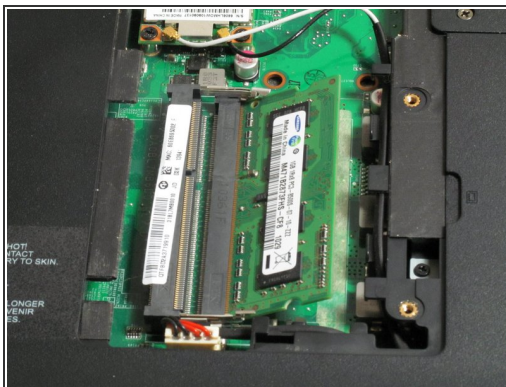
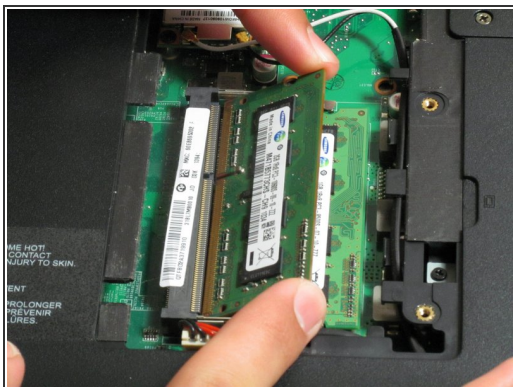
- Remove the cover, firmly lifting from the indent. It is recommended that you leave the screws in the panel.

## Step 10



- Push the two tabs outwards, away from the RAM. The RAM should spring up.

## Step 11



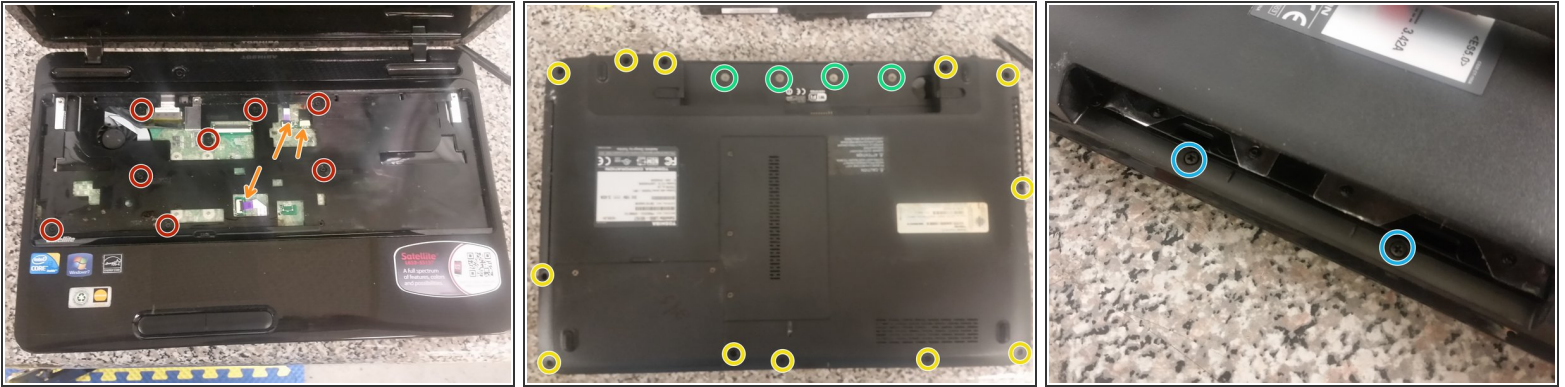
- Pull the top RAM stick out gently.
- Repeat steps 3 and 4 for the bottom RAM stick.
- When installing the new RAM, line up the notches in the RAM's contacts and insert it at the same angle you removed it.

## Step 12 — Remove optical drive



- Remove the single screw securing the optical drive, and pull the optical drive out.

## Step 13 — Remove palmrest



- Remove the eight M2.5x6.5 screws securing the palmrest to the base.
- Remove all connectors from their sockets, except for the LCD cable. That one doesn't need to be removed.
- Flip the laptop over and remove the twelve M2.5x6.5 screws.
- Also be sure to remove the four short, big-headed Philips screws from under where the battery was.
- Remove the two final screws securing the palmrest to the base, which are where the optical drive's faceplate was.
- Now use a spudger to separate the palmrest and the base.

## Step 14 — Remove DC jack



- Now, you can simply flip the laptop standing on its left side, pull the connector out from where the memory cover was, and then yank the jack from the adhesive holding it.

To reassemble your device, follow these instructions in reverse order.