



Osmo Mobile Bluetooth Module Replacement

If you are unable to connect to Bluetooth and...

Written By: William Tyler Wills



INTRODUCTION

If you are unable to connect to Bluetooth and you have tried all troubleshooting for connecting a phone to the device, the Bluetooth module may need to be replaced. This guide will explain how to replace a broken Bluetooth module to ensure proper connectivity with the device.

TOOLS:

Star Bit Screwdriver (1)
Phillips #00 Screwdriver (1)
1.5mm Hex Screwdriver (1)
Tweezers (1)
Spudger (1)
Phillips #0 Screwdriver (1)

PARTS:

DJI Osmo Mobile Trigger Button (1)

Step 1 — Osmo Mobile Handle Disassembly



- Remove gimbal from base handle by loosening round plate found at the top of the handle.

Step 2



- Use Phillips #00 screwdriver to remove the three screws found on the gimbal stabilizer to detach handle from gimbal.
- Carefully detach handle from gimbal and disconnect the cable that connects the two.

Step 3



- Locate the hex screws found at the top base of the handle, and unscrew using the 1.5mm hex screwdriver.

Step 4



- Remove joystick by gently pulling away from handle

Step 5



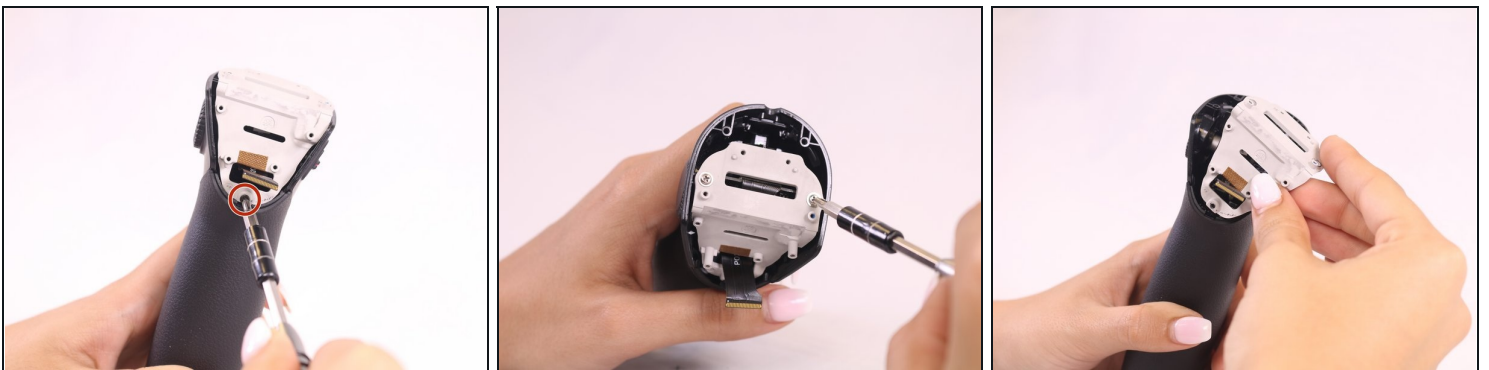
- Remove the quick release PCBA by locating the connecting wires and release the ribbon cable with [tweezers](#).
- Use the spudger to pry open and remove the face plate, starting at the back of the handle.

Step 6



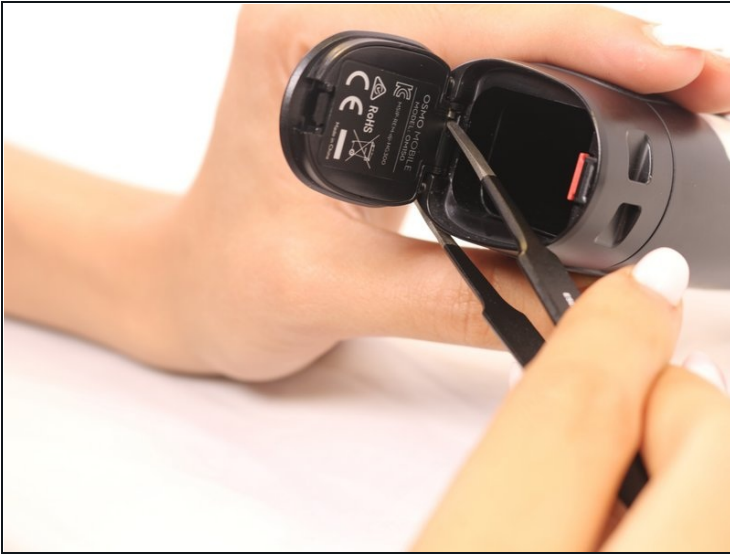
- Locate four screws directly on top of handle.
- Unscrew the silver, bottom two screws, that are closest to the face plate using the 00 screwdriver.
- Unscrew the black, top two screws, located furthest from the face plate, using the 0 screwdriver.
- Remove the remaining two screws found on the front of the faceplate.
- Remove the rest of the face plate shell.

Step 7 — Bluetooth Module



- Locate and remove the black screw found at the base of the grey mounting plate.
- Remove the grey face plate.

Step 8



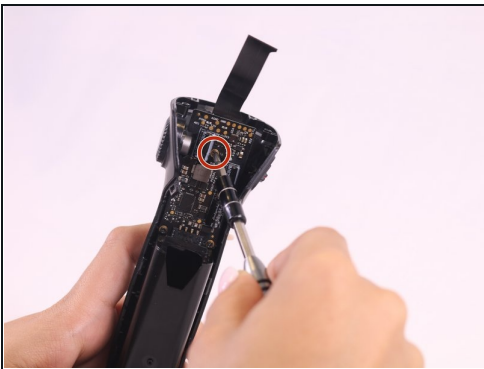
- Open the battery hatch and remove it by using the [tweezers](#) to press the hinge into the device.
- Remove the black screw located underneath where the battery hatch was.

Step 9



- Use the spudger to remove the front handle casing by sliding the spudger into the area between the handle grooves.
- Slide the spudger around the groove to find the 6 clasps that hold the front part of the handle, and unclasp them.
- Take off the front handle section to reveal the whole interior of the device.

Step 10



- Locate and remove the black screw in the center of the motherboard chip.
- Remove motherboard and replace.

To reassemble your device, follow these instructions in reverse order.

