



Osmo Mobile Charging Port Replacement

If the device does not charge and the battery...

Written By: William Tyler Wills



INTRODUCTION

If the device does not charge and the battery is functional, you may have a broken charging port. This guide will demonstrate the steps needed to replace a broken charging port.

TOOLS:

Phillips #00 Screwdriver (1)

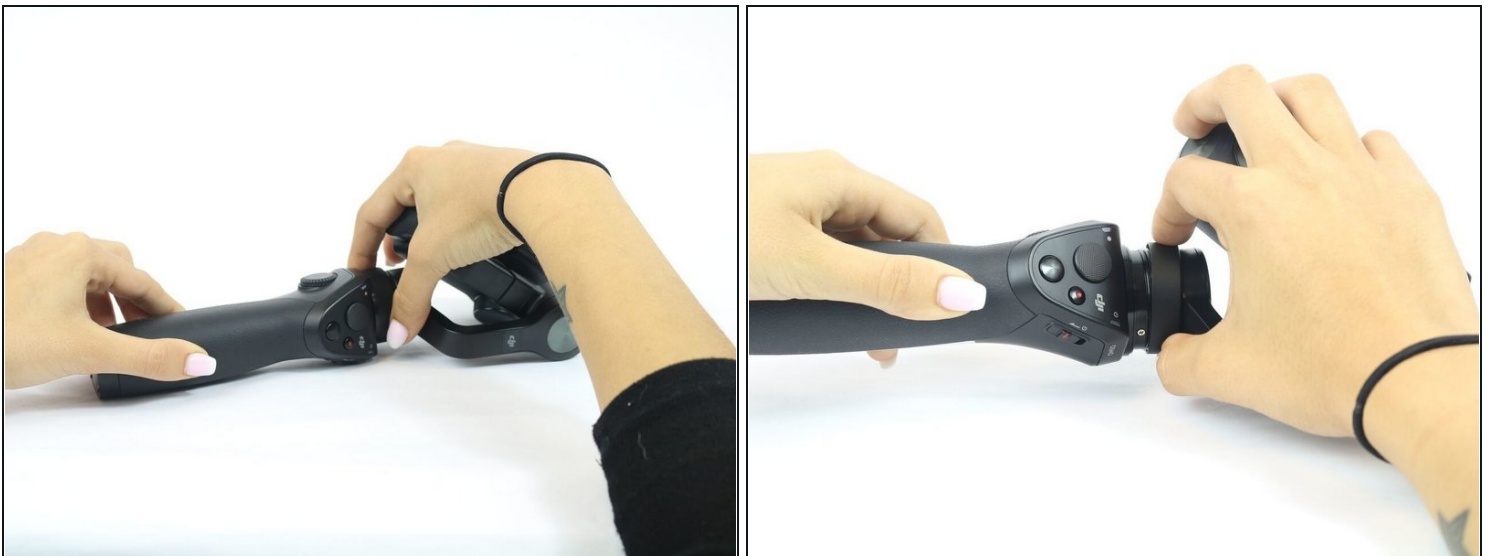
1.5mm Hex Screwdriver (1)

Tweezers (1)

Spudger (1)

Phillips #0 Screwdriver (1)

Step 1 — Osmo Mobile Handle Disassembly



- Remove gimbal from base handle by loosening round plate found at the top of the handle.

Step 2



- Use Phillips #00 screwdriver to remove the three screws found on the gimbal stabilizer to detach handle from gimbal.
- Carefully detach handle from gimbal and disconnect the cable that connects the two.

Step 3



- Locate the hex screws found at the top base of the handle, and unscrew using the 1.5mm hex screwdriver.

Step 4



- Remove joystick by gently pulling away from handle

Step 5



- Remove the quick release PCBA by locating the connecting wires and release the ribbon cable with [tweezers](#).
- Use the spudger to pry open and remove the face plate, starting at the back of the handle.

Step 6



- Locate four screws directly on top of handle.
- Unscrew the silver, bottom two screws, that are closest to the face plate using the 00 screwdriver.
- Unscrew the black, top two screws, located furthest from the face plate, using the 0 screwdriver.
- Remove the remaining two screws found on the front of the faceplate.
- Remove the rest of the face plate shell.

Step 7 — Charging Port



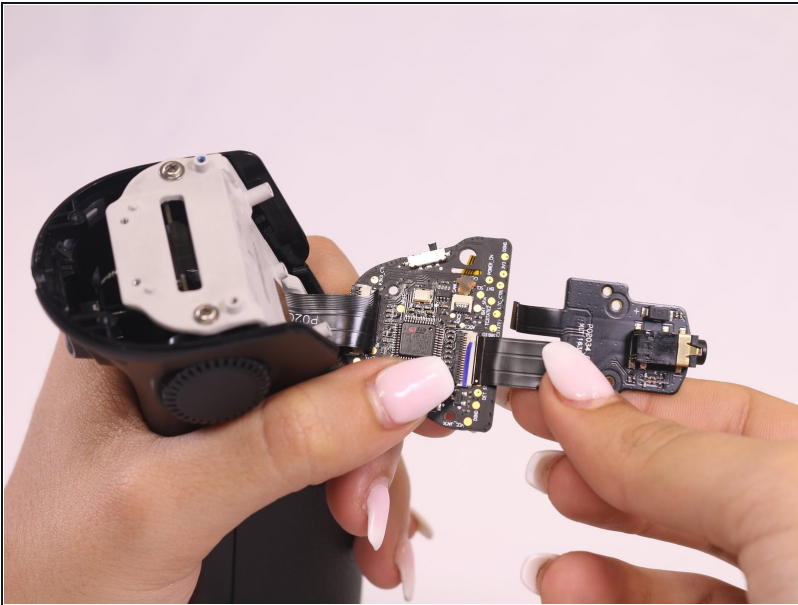
- Remove the top left screw on the joystick panel with Phillips #00 screwdriver.
- Lift faceplate holding joystick module.

Step 8



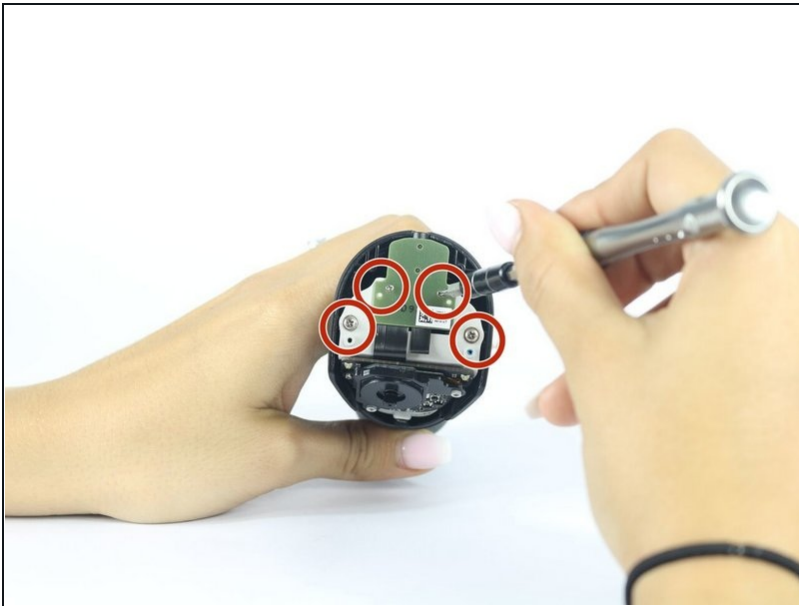
- Remove the bottom right screw on the joystick panel with the #00 Phillips screwdriver.

Step 9



- Hold down the larger of the two ribbon cables, and pull on circuit board with a constant and careful down and out motion.

Step 10



- Remove the two screws from the green charging module and the two screws on the grey plate and remove from handle.
- Replace charging module.

To reassemble your device, follow these instructions in reverse order.