



# Osmo Mobile Charging Port Replacement

This guide will assist with the preliminary disassembly of the DJI Osmo Mobile, to separate the handle from the gimbal.

Written By: William Tyler Wills



## INTRODUCTION

If the device does not charge and the battery is functional, you may have a broken charging port. This guide will demonstrate the steps needed to replace a broken charging port.

---

### TOOLS:

- [Phillips #00 Screwdriver](#) (1)
  - [1.5mm Hex Screwdriver](#) (1)
  - [Tweezers](#) (1)
  - [Spudger](#) (1)
  - [Phillips #0 Screwdriver](#) (1)
-

## Step 1 — Osmo Mobile Handle Disassembly



- Remove gimbal from base handle by loosening round plate found at the top of the handle.

## Step 2



- Use Phillips #00 screwdriver to remove the three screws found on the gimbal stabilizer to detach handle from gimbal.
- Carefully detach handle from gimbal and disconnect the cable that connects the two.

### Step 3



- Locate the hex screws found at the top base of the handle, and unscrew using the 1.5mm hex screwdriver.

### Step 4



- Remove joystick by gently pulling away from handle



## Step 5



- Remove the quick release PCBA by locating the connecting wires and release the ribbon cable with tweezers.
- Use the spudger to pry open and remove the face plate, starting at the back of the handle.

## Step 6



- Locate four screws directly on top of handle.
- Unscrew the silver, bottom two screws, that are closest to the face plate using the 00 screwdriver.
- Unscrew the black, top two screws, located furthest from the face plate, using the 0 screwdriver.
- Remove the remaining two screws found on the front of the faceplate.
- Remove the rest of the face plate shell.

## Step 7 — Charging Port



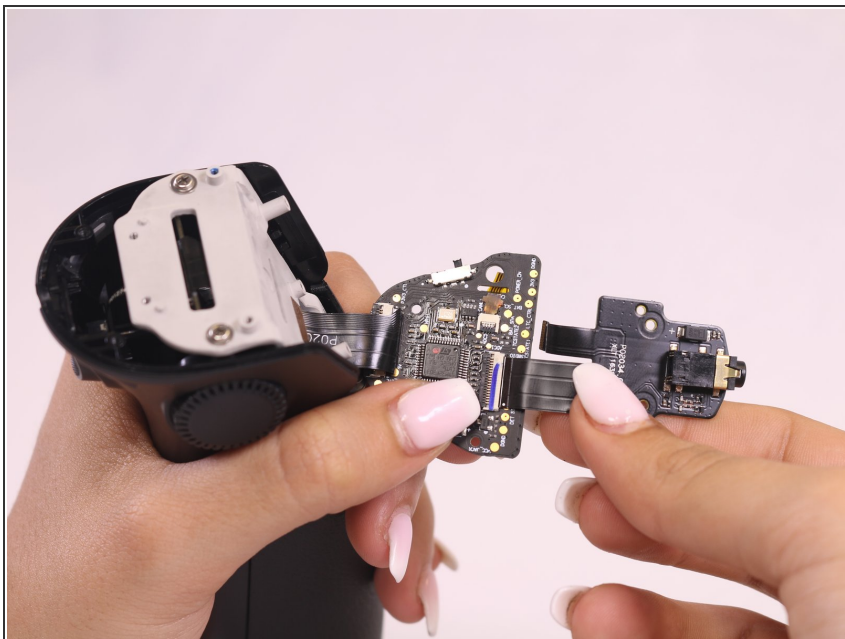
- Remove the top left screw on the joystick panel with Phillips #00 screwdriver.
- Lift faceplate holding joystick module.

## Step 8



- Remove the bottom right screw on the joystick panel with the #00 Phillips screwdriver.

## Step 9



- Hold down the larger of the two ribbon cables, and pull on circuit board with a constant and careful down and out motion.

## Step 10



- Remove the two screws from the green charging module and the two screws on the grey plate and remove from handle.
- Replace charging module.

To reassemble your device, follow these instructions in reverse order.