



Logitech Harmony Companion Button Pad Replacement

The buttons on your Companion remote may stop...

Written By: Cassidy Wardlow



INTRODUCTION

The buttons on your Companion remote may stop working or become damaged. This guide will show you how to replace the button pad in your remote. All you'll need for this guide is a plastic opening tool and Phillips #0 screwdriver.

TOOLS:

[iFixit Opening Tool](#) (1)

[Phillips #0 Screwdriver](#) (1)

Step 1 — Remote Battery



- Hold the remote with the Logitech label toward you.

Step 2



- Push the battery cover upward.

Step 3



- Use your finger to lift the battery out of the compartment.
- When the battery has lifted, push it up to remove it.

Step 4 — Remote Motherboard



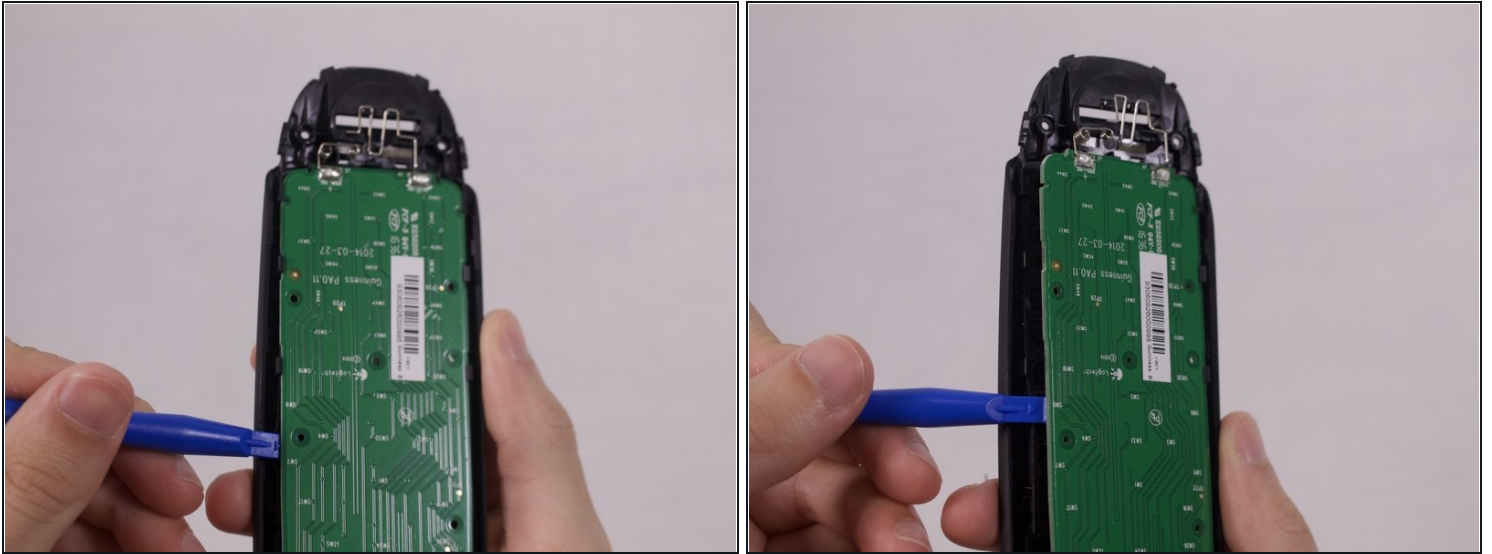
- Remove the two 5.0 mm Phillips #0 screws.

Step 5



- Use the plastic opening tool to pry open the back cover of the remote.
- ① It is recommended to have the point of the opening tool facing the back of the remote.
- Insert the opening tool on each side of the bottom of the remote, and pull up until you hear the cover click open.
- Pry the back cover off by sliding the plastic opening tool down each side.

Step 6



- Use the plastic opening tool to remove the motherboard.

Step 7 — Button Pad



- Lift the button pad up to remove it from the remote.

To reassemble your device, follow these instructions in reverse order.