



Acer Chromebook C710-2833 Wifi Card Replacement

In this replacement guide, you will remove and...

Written By: Nicholas Latorre



INTRODUCTION

In this replacement guide, you will remove and install a wireless (wifi) card.

TOOLS:

[64 Bit Driver Kit](#) (1)
[Anti-Static Wrist Strap](#) (1)
[Magnetic Project Mat](#) (1)

PARTS:

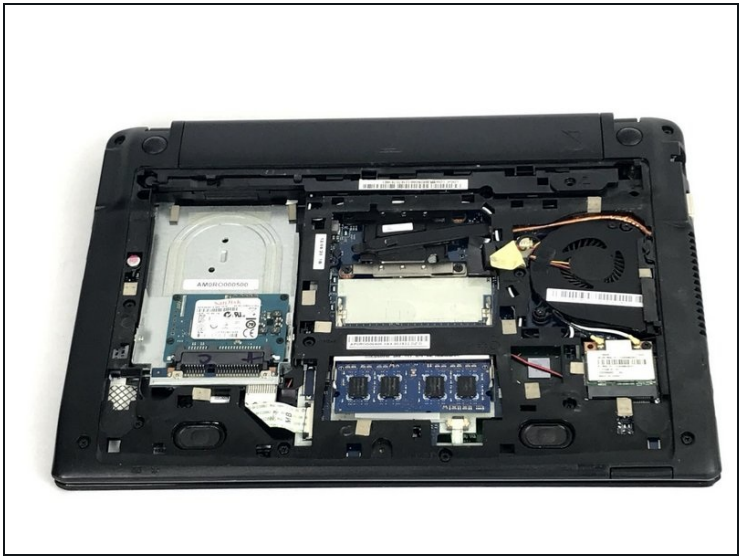
[Acer Chromebook C710 Atheros Wireless Card](#) (1)

Step 1 — Wifi Card



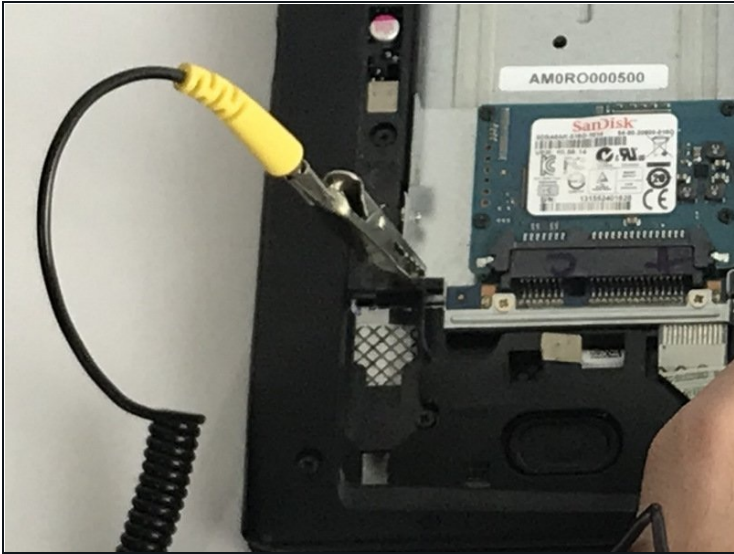
- Flip your Chromebook over so the bottom is facing up.

Step 2



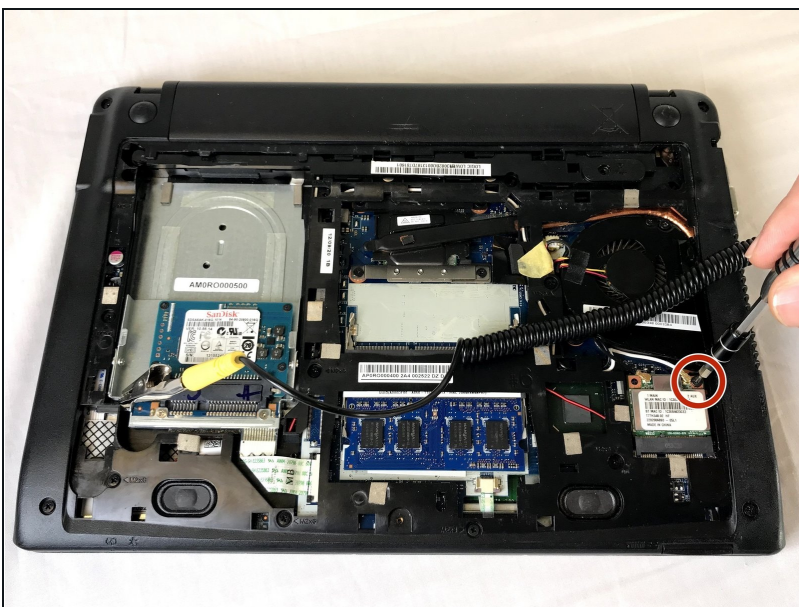
- Locate the 6 mm Phillips #00 screw that holds the back cover together. Use your driver with the PH00 bit attached to unscrew it.
- Once completely unscrewed, carefully lift the cover off.
- Place the cover and screw safely to the side for now.

Step 3



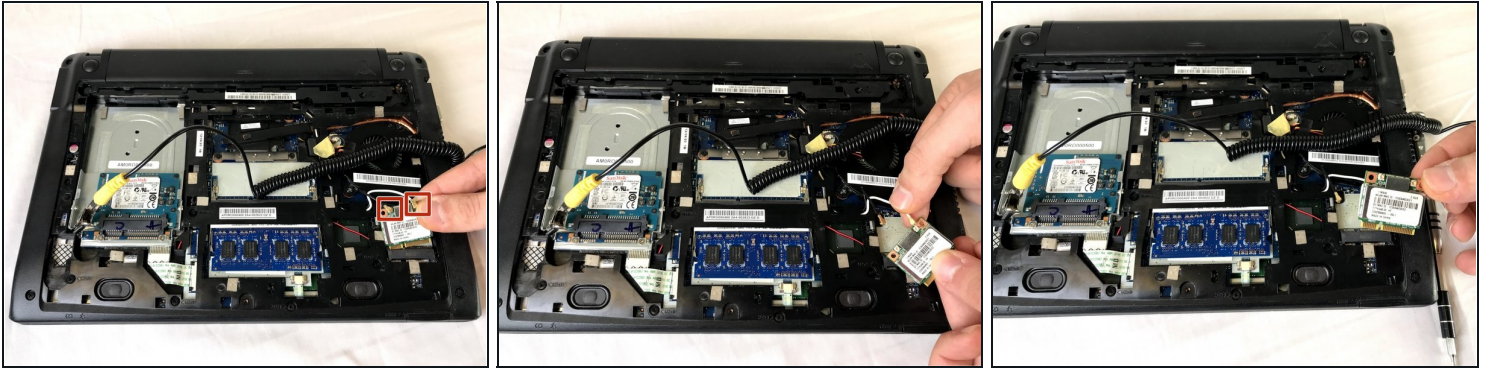
- Now take your [anti-static wrist strap](#) and place it tightly on your wrist.
 - Attach the alligator clamp of the wrist strap to something that will ground yourself to avoid possible electric zaps.
- ⓘ The location chosen in the picture is recommended.

Step 4



- Locate the 3 mm Phillips #00 screw on the wireless card port.
- Unscrew the screw and place it aside for now.

Step 5



- Safely remove the wireless card by pulling it out of the bottom of the port.
- Lastly, disconnect the two white and black wire connectors attached to the wireless card.

To reassemble your device, follow these instructions in reverse order.