



Fugoo Style XL Motherboard Replacement

Use this guide to remove and replace the...

Written By: James Gifford



INTRODUCTION

Use this guide to remove and replace the motherboard within a Fugoo Style XL.



TOOLS:

- [TR9 Torx Security Screwdriver](#) (1)
 - [Tweezers](#) (1)
 - [iFixit Opening Tool](#) (1)
 - [64 Bit Driver Kit](#) (1)
-

Step 1 — Fabric Case



- Using your hand, unscrew the large screws underneath the speaker.

Step 2



- Using your hand, gently lift the large plastic tab secured to the rubber holding.
- After lifting the tab, slide the speaker out of its case.

⚠ Ensure the tab is lifted only slightly above the rubber holding. Bending the plastic tab too far could result in damage to the case.

Step 3 — Motherboard



- Remove the 8 screws (4 on each side) that hold the covers that conceal the bass speakers. Remove these 3mm screws using a #2.0 Hex screwdriver.

Step 4



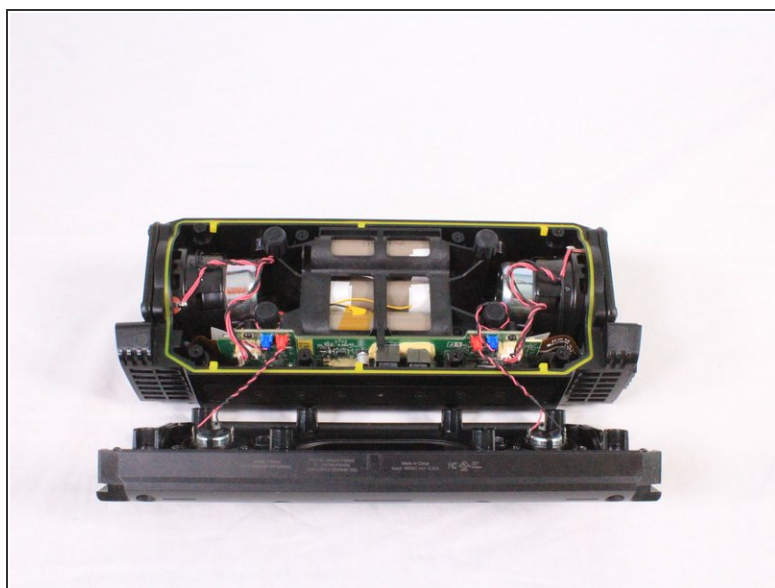
- Using your hand, pull the covers away from the speaker.

Step 5



- Use a #2.0 Hex screwdriver to unscrew the 8 screws shown in the image.

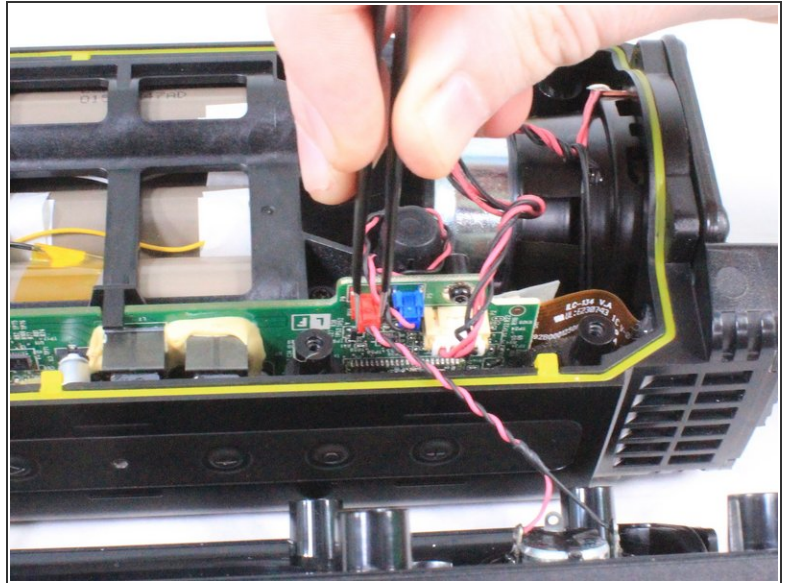
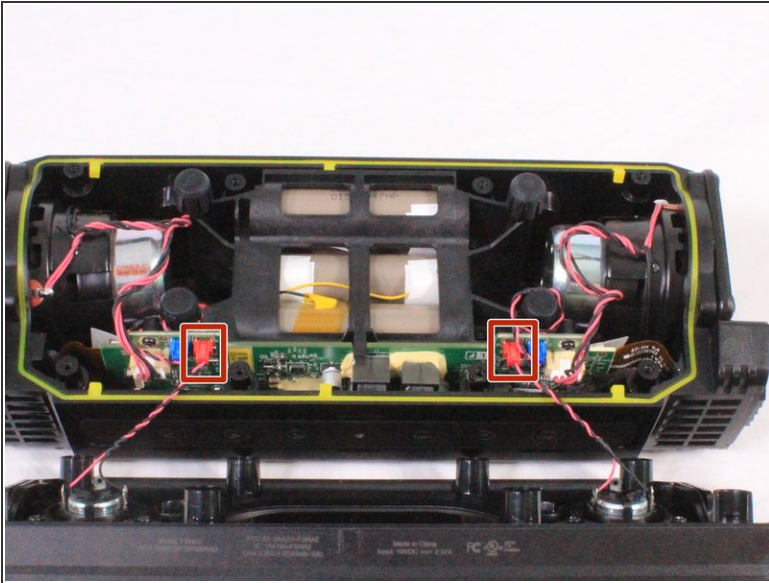
Step 6



- Gently pull apart the front casing from the back casing.

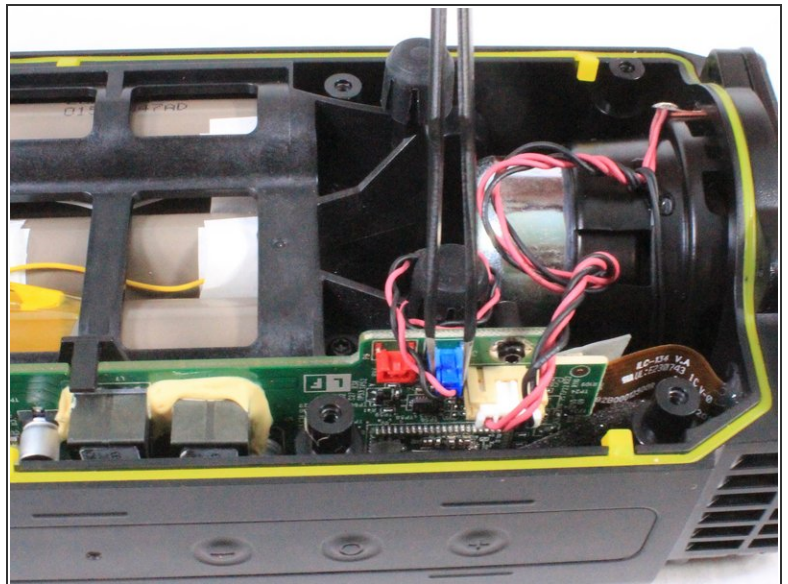
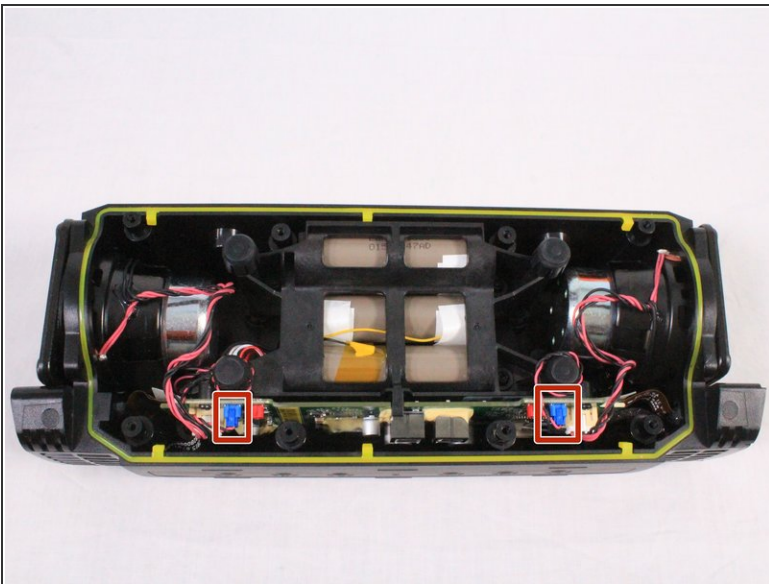
⚠ Speakers on the front casing have wires directly connected to the motherboard. Pulling off the casing with force will result in damage.

Step 7



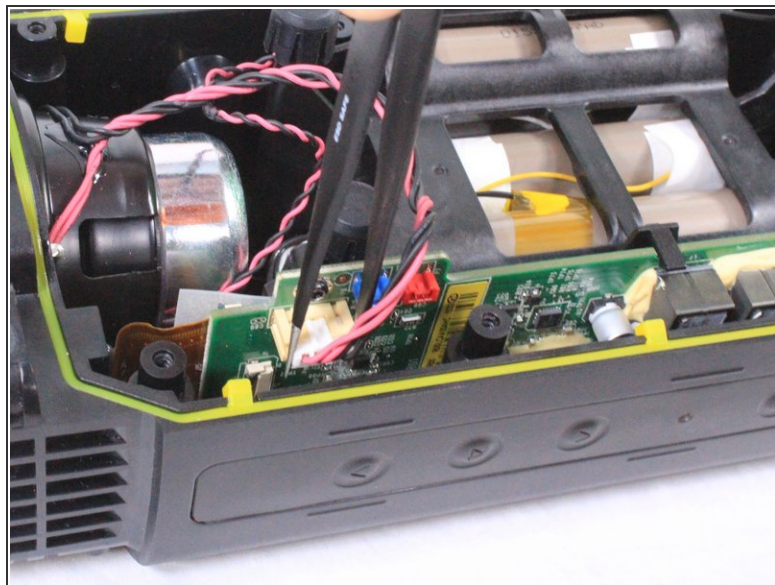
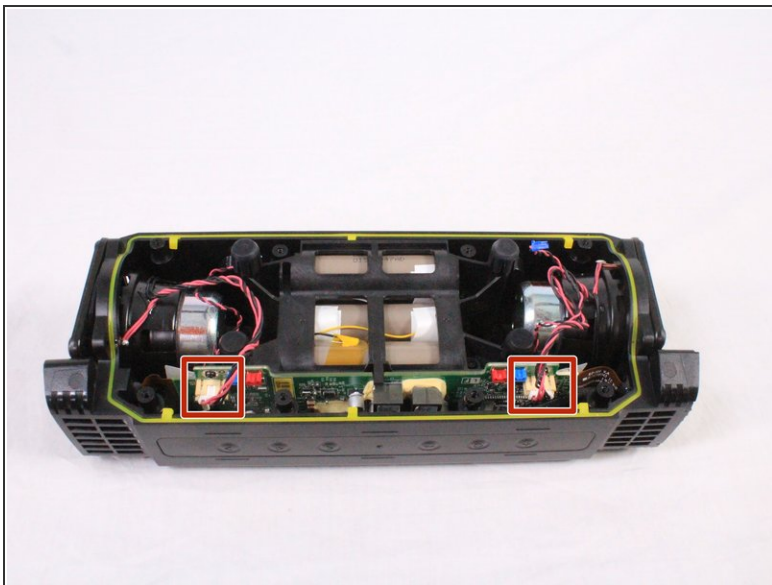
- Using a pair of tweezers or your hand, carefully remove the red bundled cable connectors from the motherboard.
- When the red bundled cable connectors are disconnected, set the outer casing aside.

Step 8



- Untangle any blue bundled cable connectors and gently remove them from the motherboard using a pair of tweezers.

Step 9



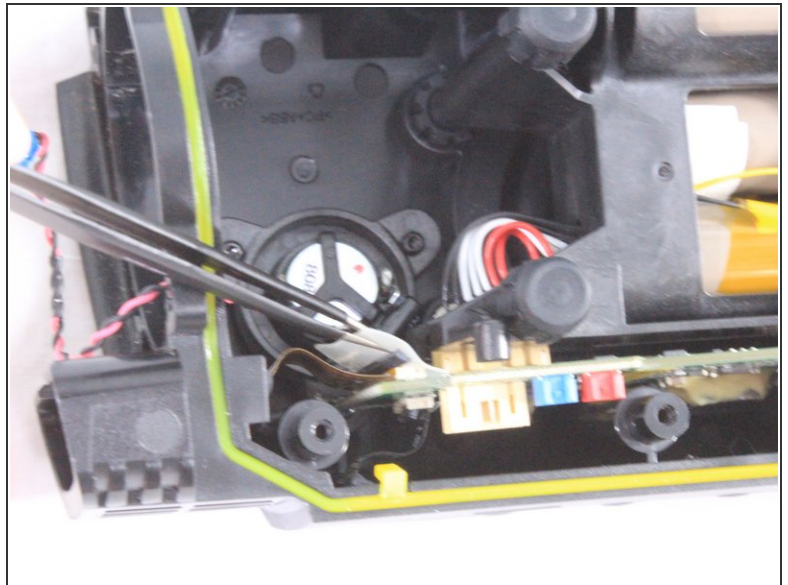
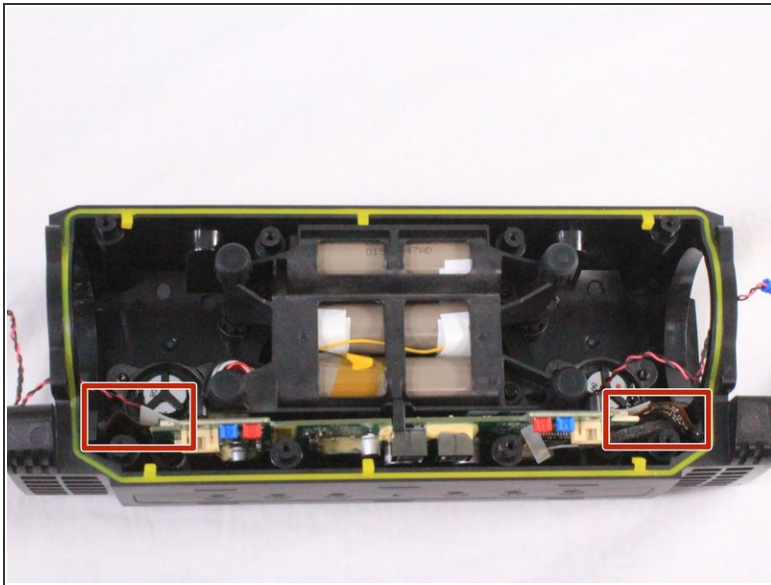
- Carefully untangle and remove the white bundled cable connectors from the motherboard.

Step 10



- Using a T9 screwdriver, remove the 8 screws (4 on each speaker) surrounding the midwoofers.
- Using your hand, carefully remove the midwoofers.

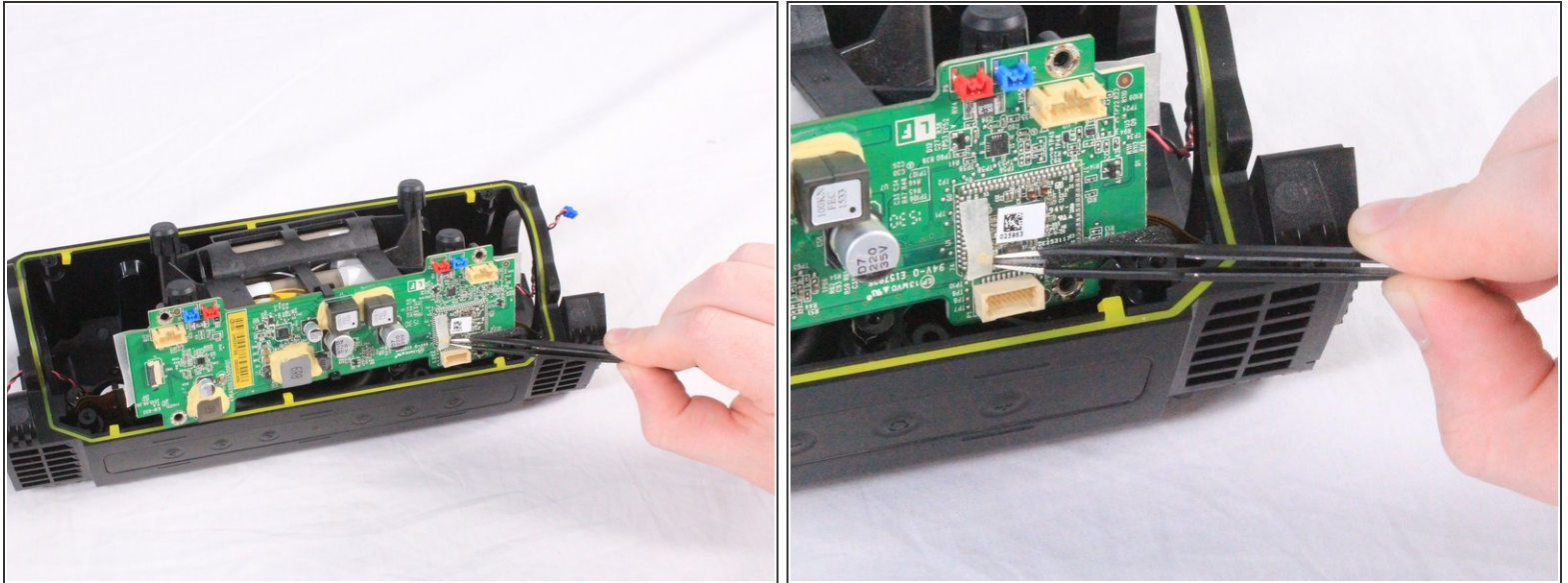
Step 11



- Using a pair of tweezers, lift the padded holding that secures the ZIF connector to the motherboard. The connector will release from the motherboard once the padding is lifted.

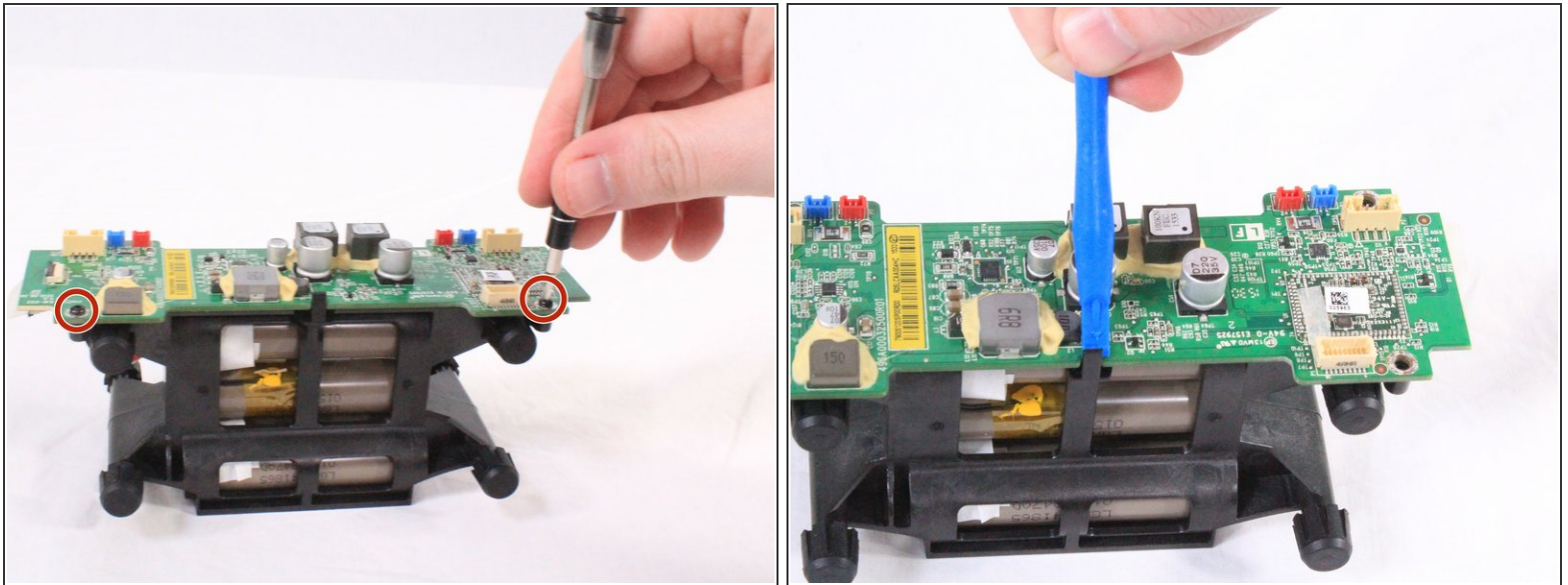
⚠ Do not pull on the cables themselves. Doing so can damage the cables. Always remove the ZIF connector by gently lifting the padding securing them to the motherboard.

Step 12



- Carefully lift the battery and motherboard unit halfway out of the casing. The motherboard is connected to the battery directly.
- ⚠ There is a small coaxial cable connected underneath the motherboard. Using a pair of tweezers, carefully disconnect and remove the cable from under the adhesive tape.
- When the cable is disconnected, fully remove the motherboard and battery unit.

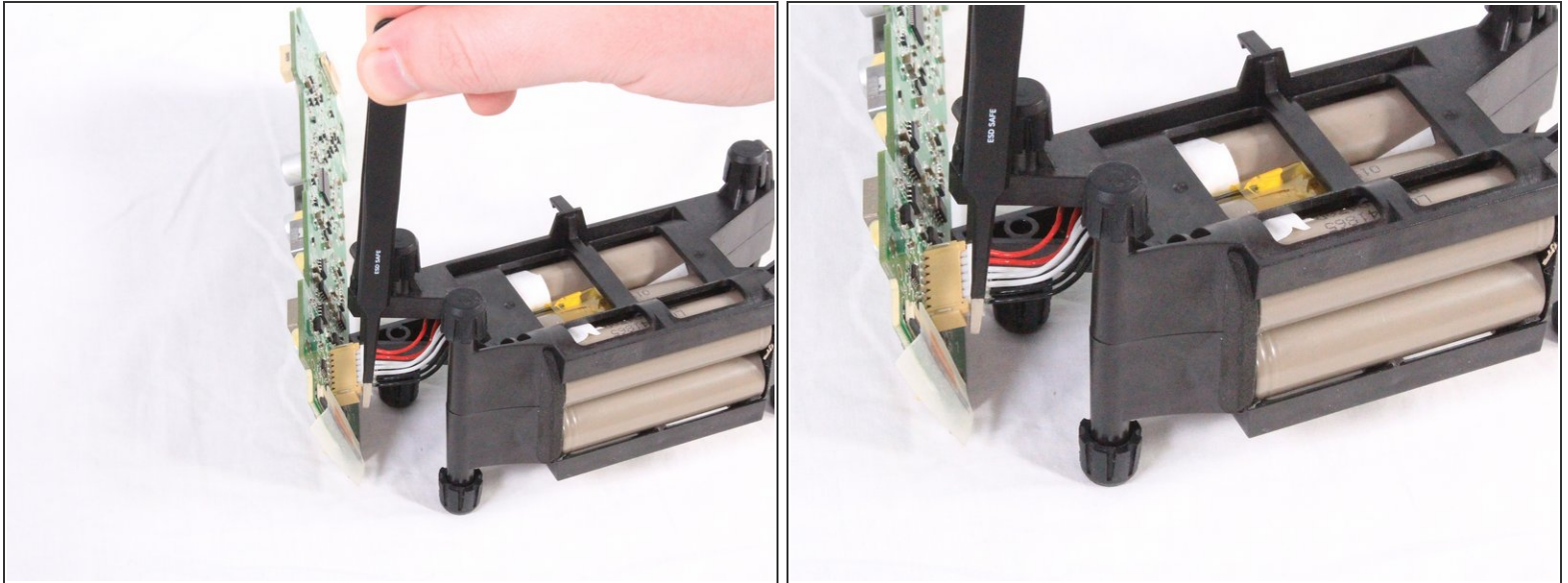
Step 13



- Remove the 3mm screws using a #2.0 Hex screwdriver. There are 4 of these screws (2 on each side) that connect the motherboard to the battery unit.
- When the screws are removed, use an iFixit opening tool to remove the motherboard from the two clamps securing it to the battery pack.

⚠ Beware! The motherboard is not fully disconnected from the battery even when removed from the clamps.

Step 14



- Using tweezers or your hand, carefully disconnect the bundled cables connecting the battery to the motherboard.

To reassemble your device, follow these instructions in reverse order.