

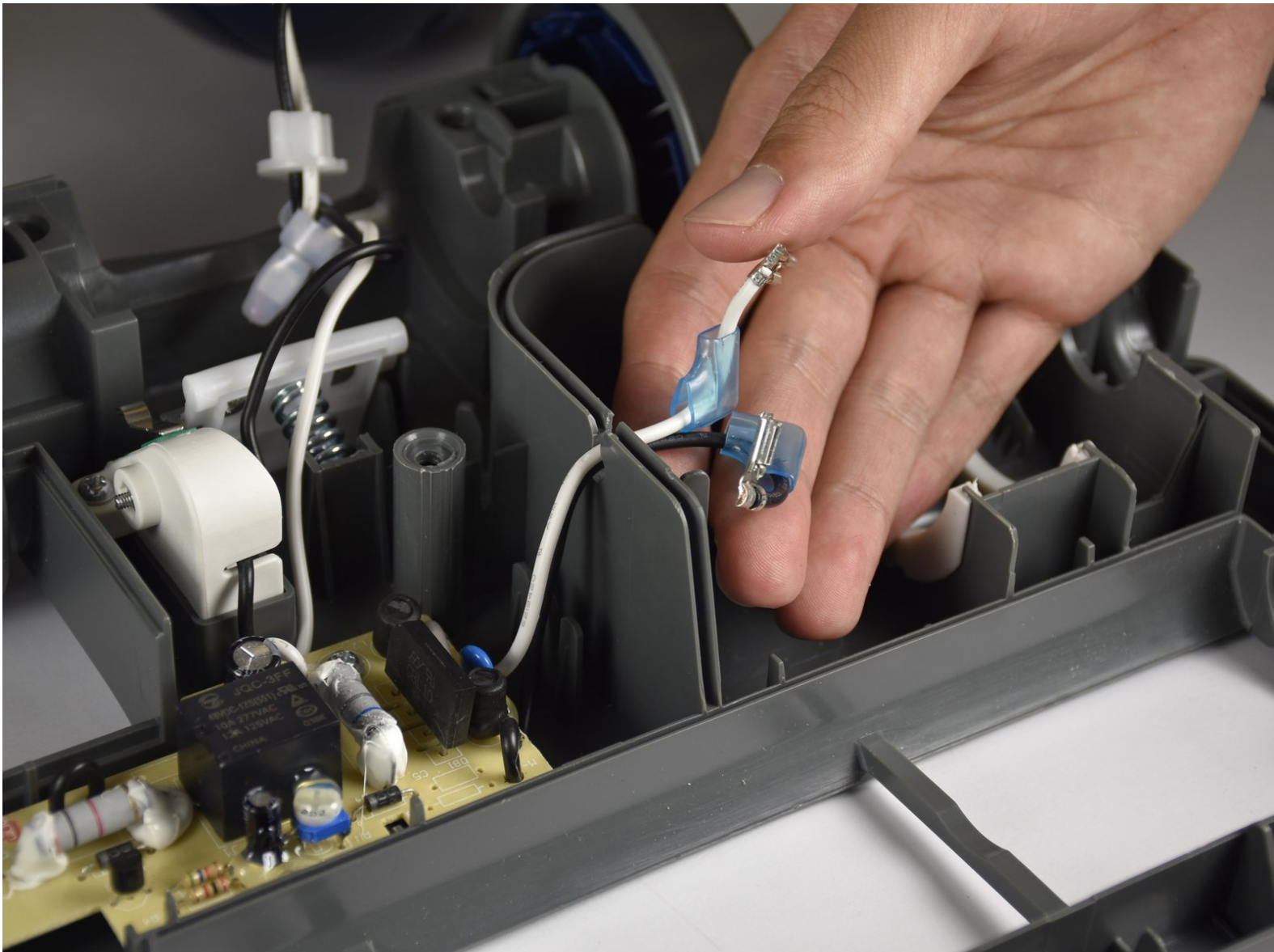


Shark Navigator Lift-Away Deluxe NV360

Motherboard Replacement

This guide shows how to replace the motherboard in the power head of the vacuum.

Written By: Elena Postupalskaya



INTRODUCTION

The roller brush and motor need to be removed in order to replace the motherboard. Soldering would be needed for reassembly.

TOOLS:

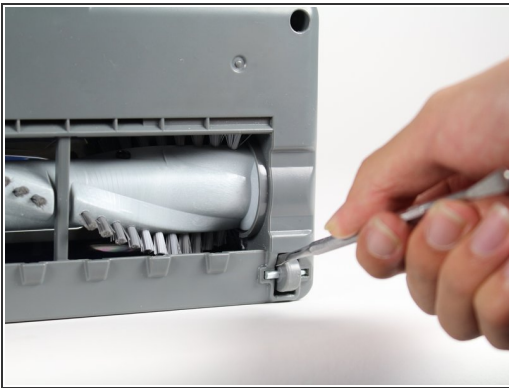
- [Metal Spudger](#) (1)
 - [Phillips #1 Screwdriver](#) (1)
 - [iFixit Opening Tool](#) (1)
 - [Flush Cutter](#) (1)
 - [Soldering Workstation](#) (1)
-

Step 1 — Roller Brush Belt



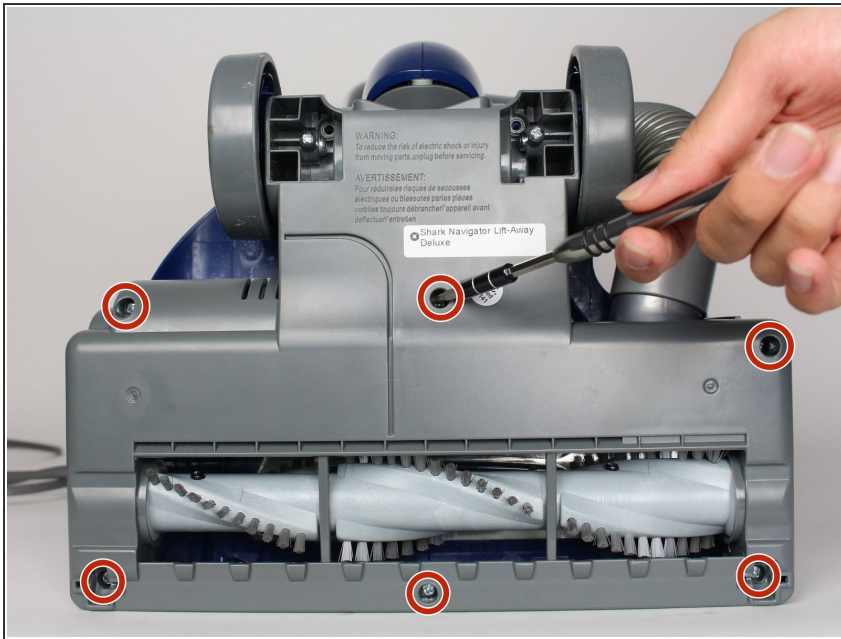
- Lay the vacuum down by hand and locate the roller brush underneath the vacuum cleaner.

Step 2



- Insert the metal spudger between the inside side of the wheel and the plastic body.
- Push the metal spudger away from you to pop the wheels out.
- Repeat the step to remove the other wheel on the other side.

Step 3



- Remove the six 15mm screws using the PH1 screwdriver.

Step 4



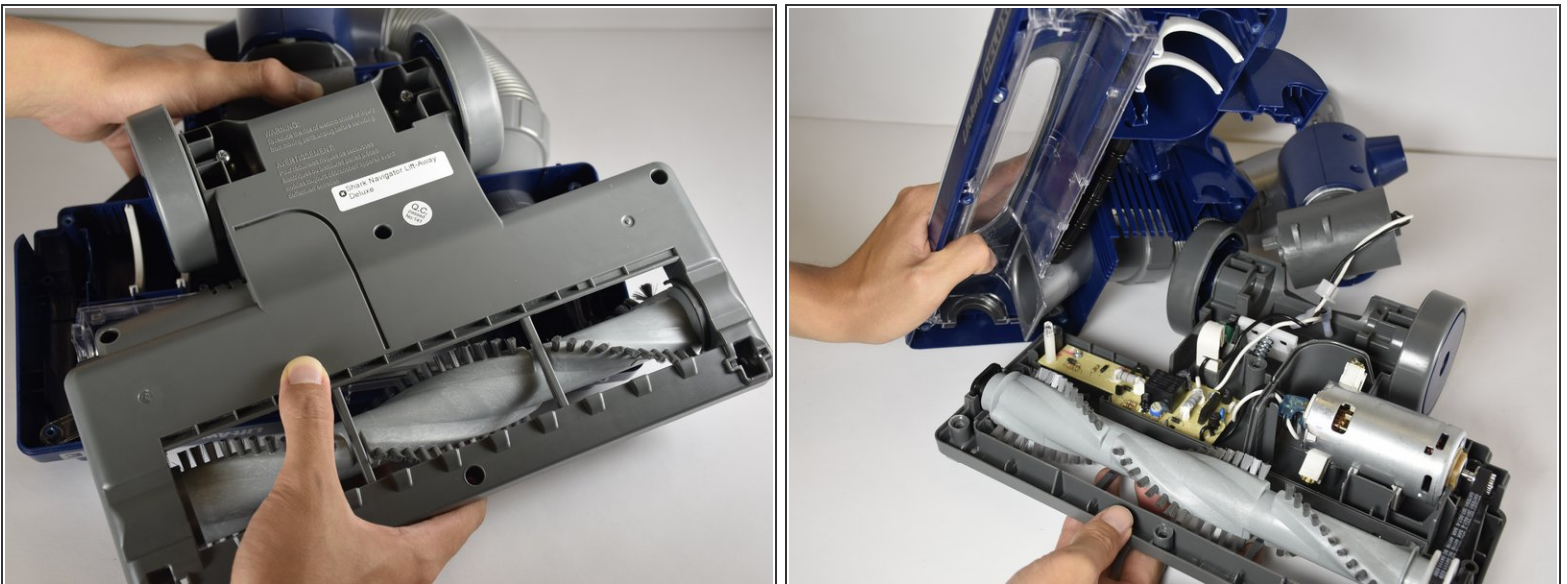
- Move the blue fulcrum connecting the bottom and the main body of the vacuum cleaner back and forth to loosen up crevice between the two halves of the roller brush enclosure.

Step 5



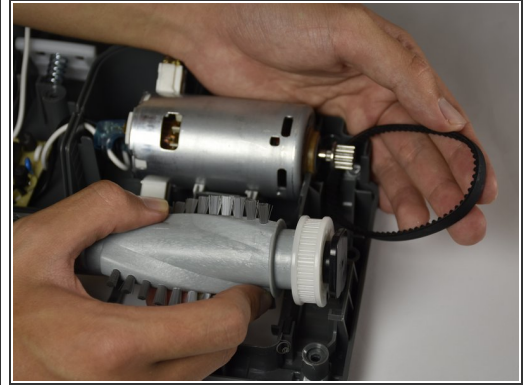
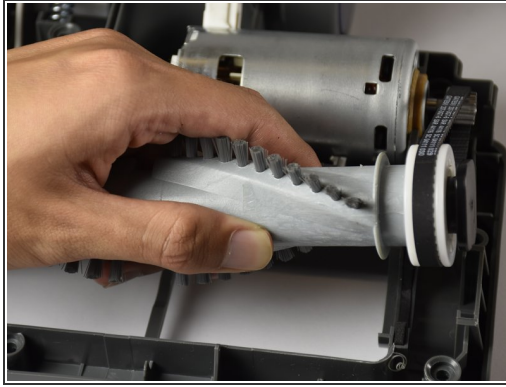
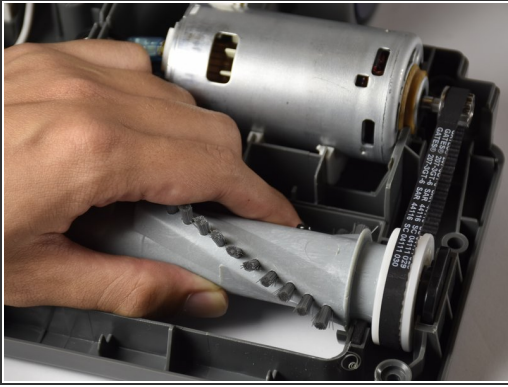
- Insert the plastic opening tool into the crevice between the blue and the dark grey plastic frames enclosing the roller brush.
- Apply an outward force throughout and all around the gap in order to separate the two plastic frames.

Step 6



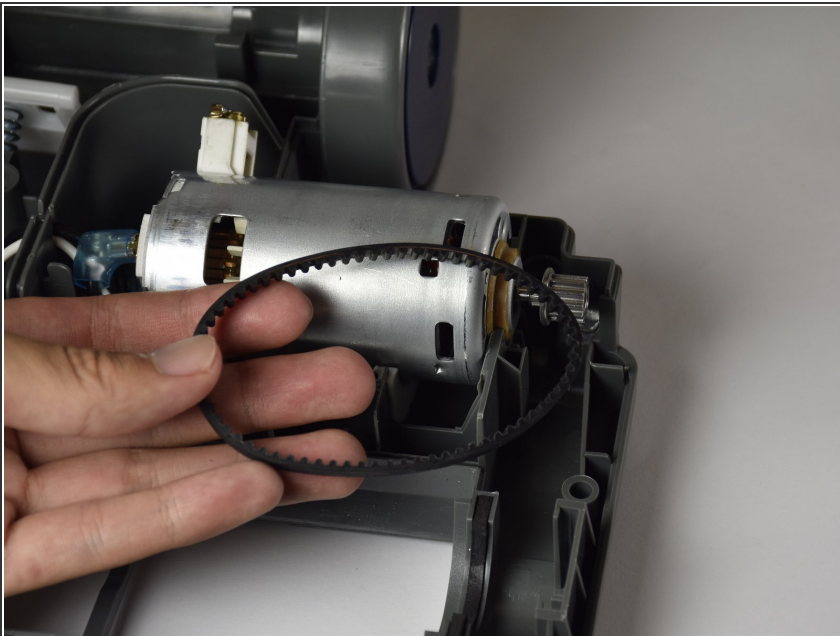
- Lift the grey frame off the bottom of the vacuum cleaner with your hands and place it on a flat surface.

Step 7



- Lift the roller brush slightly upwards using your hand.
- Take one side of the black roller brush belt off by pulling it over the end of the roller brush with your other hand.

Step 8



- Remove the roller brush belt with your hands by sliding it off the end of the motor.

Step 9 — Roller Brush



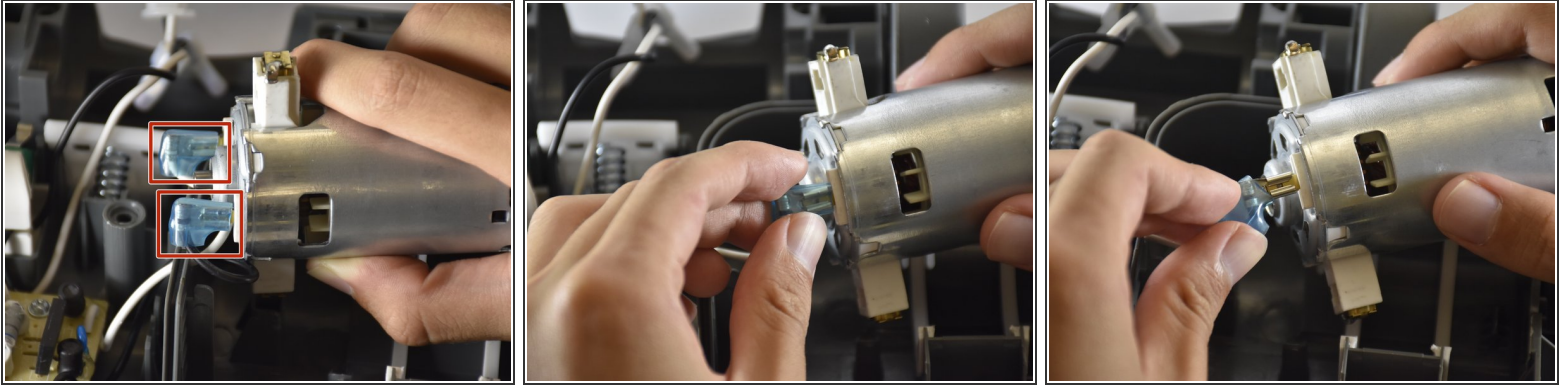
- Remove the roller brush from the plastic frame using your hands by lifting it away.

Step 10 — Roller Brush Motor



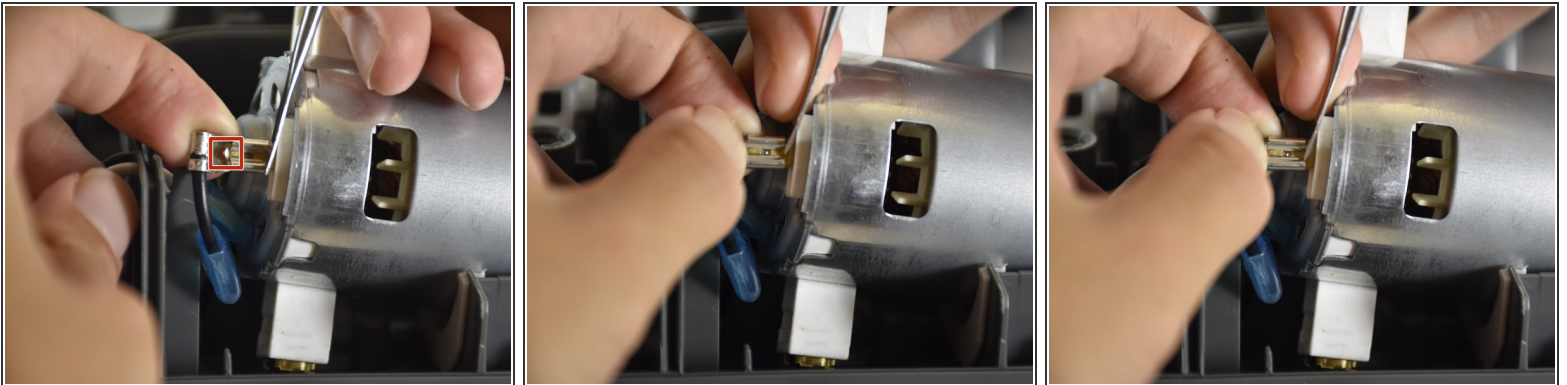
- Lift the roller brush motor up and away from its half-cylindrical holder with your hand.

Step 11



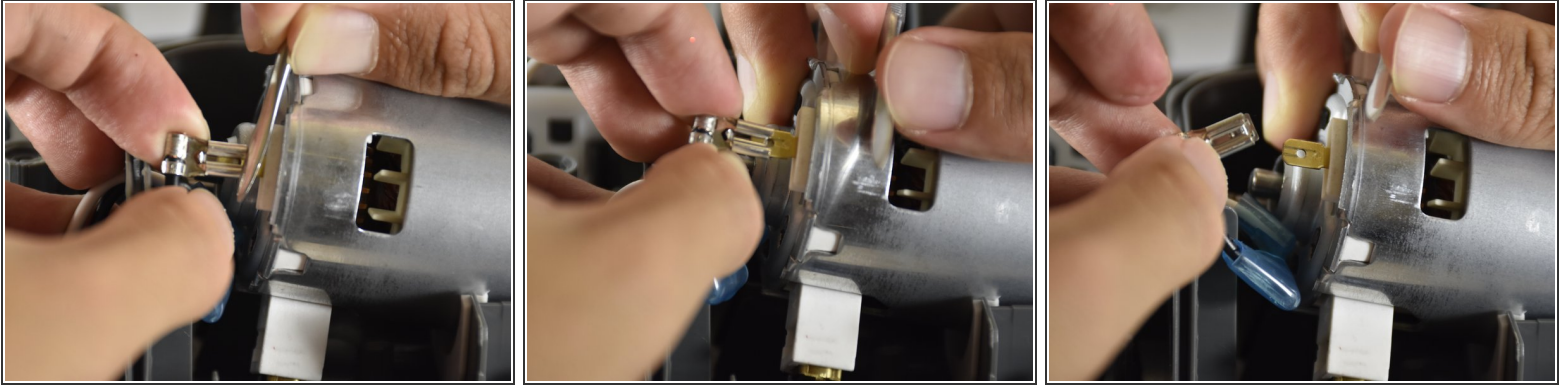
- Locate the two connectors coming out of the roller brush motor.
- Pinch and pull the blue plastic insulation down the wire and away from the motor until the metal connectors are fully exposed.

Step 12



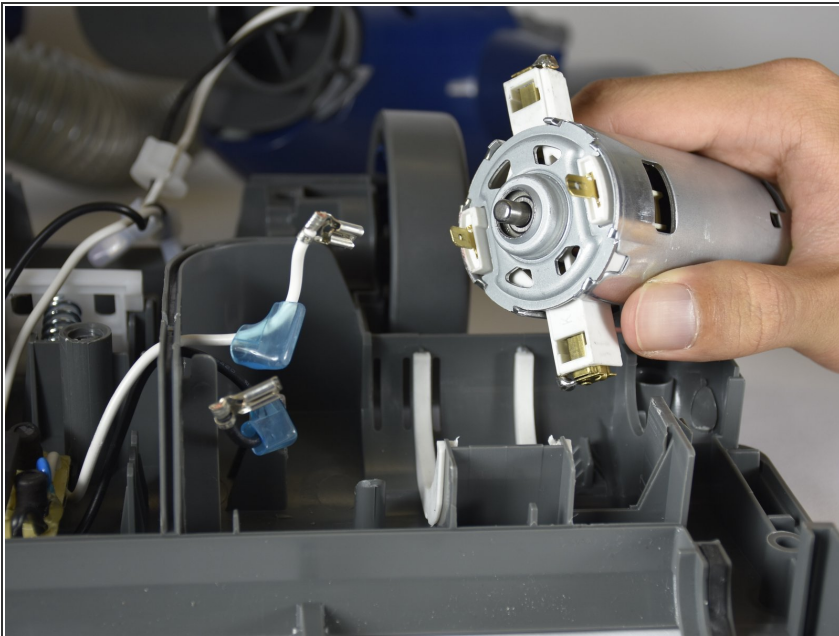
- Locate the protrusion near the connection between the metal and wire.
- Push down on the protrusion with your finger and push the metal connector away from the motor with the metal spudger.

Step 13



- Continue to push on the connector away from the motor with the metal spudger until it is disconnected completely.
- Repeat the steps 12-14 for the other wire.

Step 14



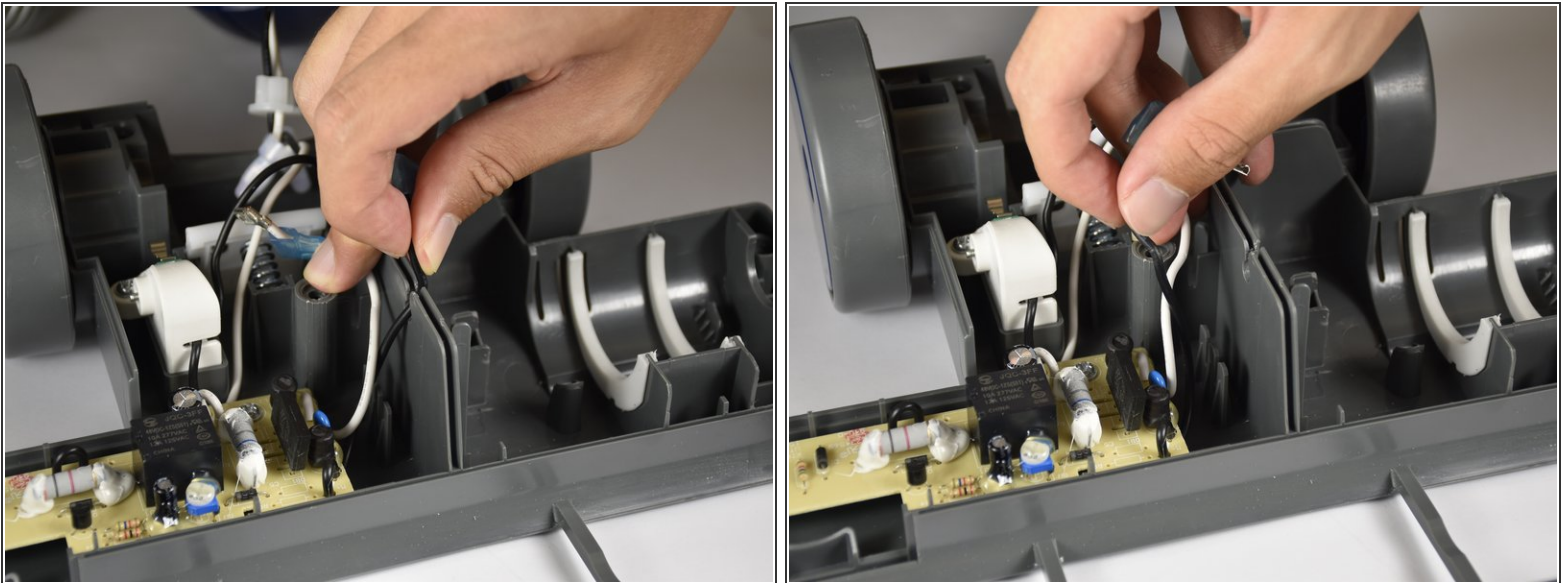
- Take the motor out and away from the motorized floor brush compartment by hand.

Step 15 — Motherboard



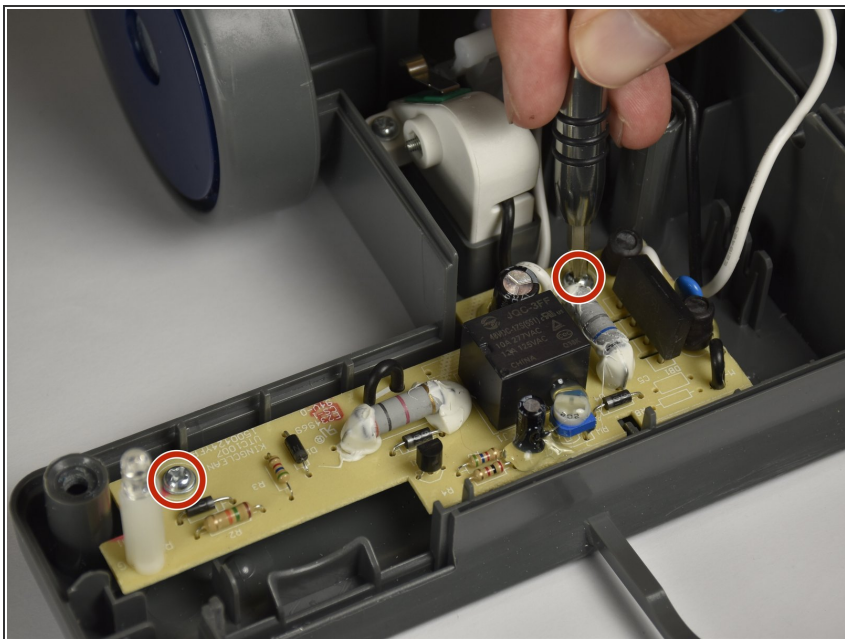
- Locate the two wires that were connected to the roller brush motor.
- Remove the white wire from the pass-through hole in the divider of the motorized floor brush compartment.

Step 16



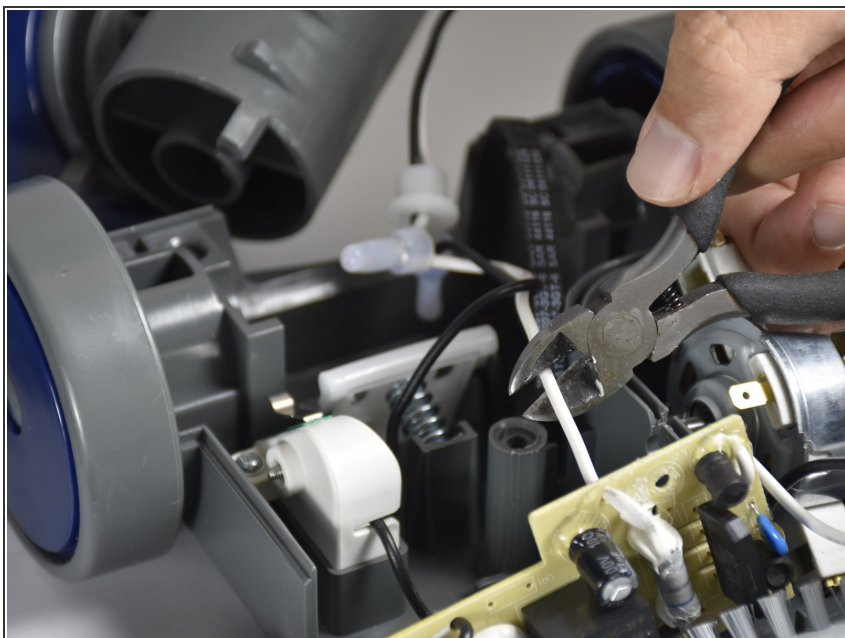
- Remove the black wire from the pass-through hole in the divider of the motorized floor brush compartment.

Step 17



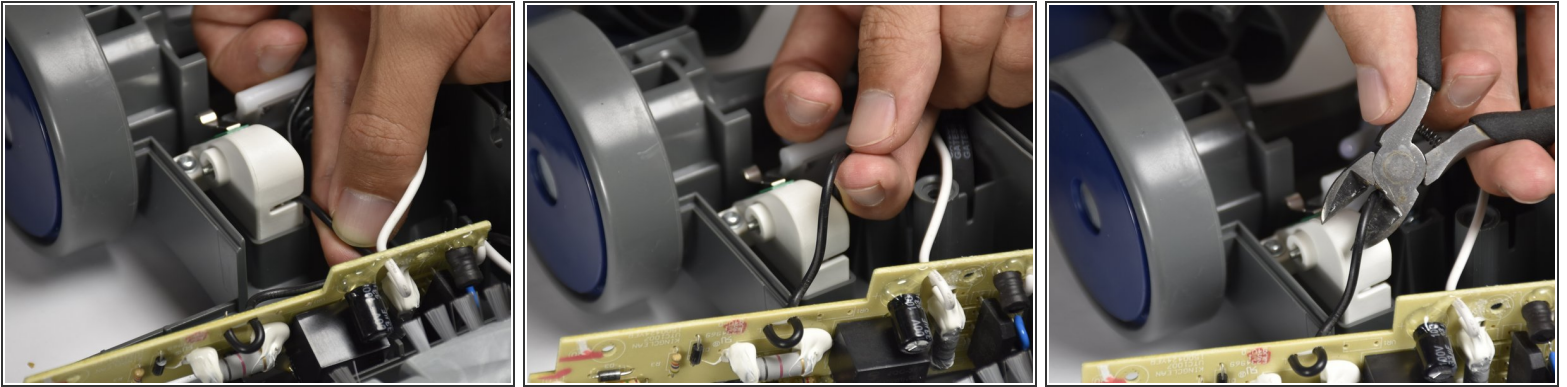
- Locate and remove the two 10mm screws on the motherboard with the PH1 screwdriver.

Step 18



- Cut the white wire from the motherboard with wire cutters.
- ☒ Solder the wire connection back together during reassembly.

Step 19



- Pull the black wire out of the white holder with a pass-through slot using your hands.
- Cut the black wire from the motherboard with the wire cutters.
- ☑ Solder the wire connection back together during reassembly.

Step 20



- Remove the motherboard by lifting it away from the motorized floor brush compartment with your hands.

To reassemble your device, follow these instructions in reverse order.