



Thrustmaster T Flight Hotas 4 Bottom Panel Replacement

This guide will show you how to remove the bottom panel of the joystick.

Written By: Aaron Banaga



INTRODUCTION

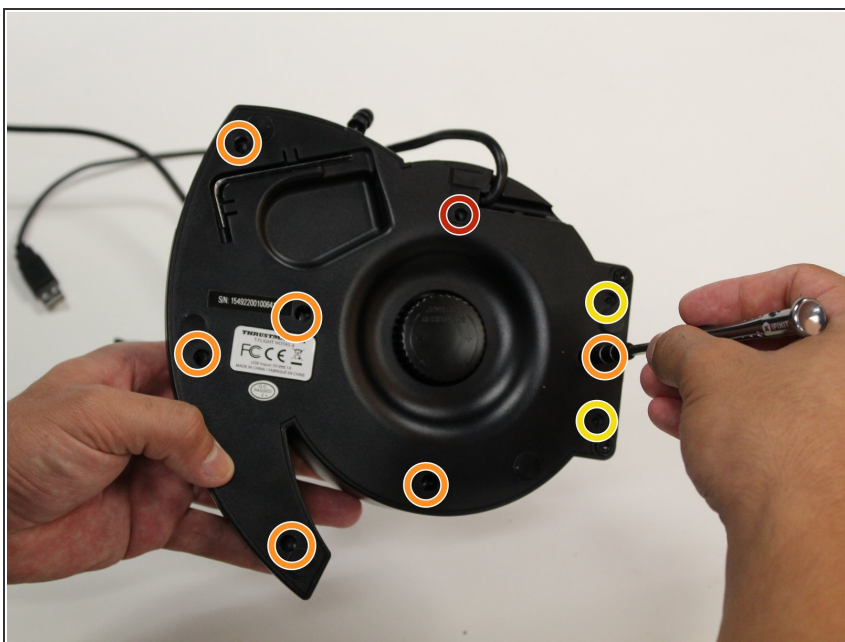
You must remove the bottom panel in order to reach the interior of the joystick.



TOOLS:

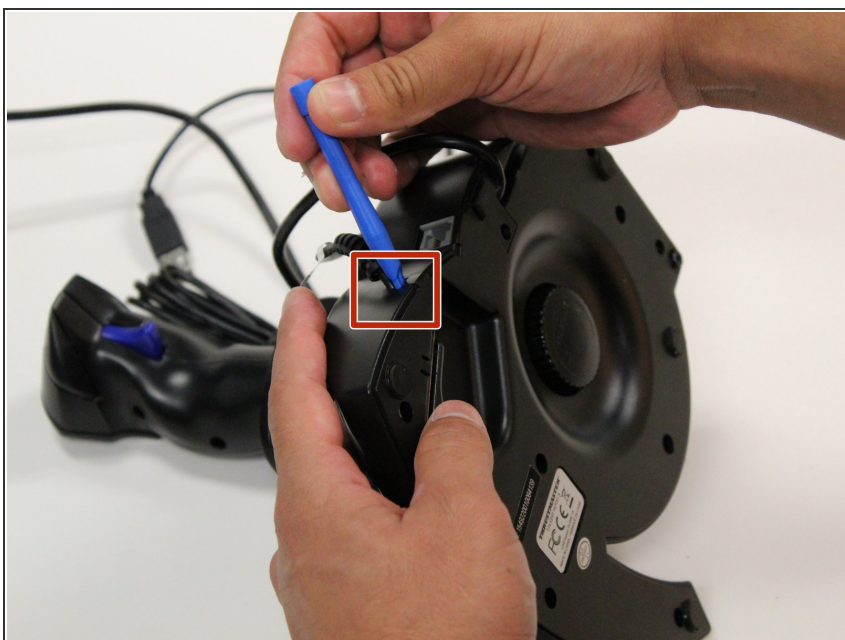
- [iFixit Opening Tools](#) (1)
-

Step 1 — J1 Screws on Bottom Panel



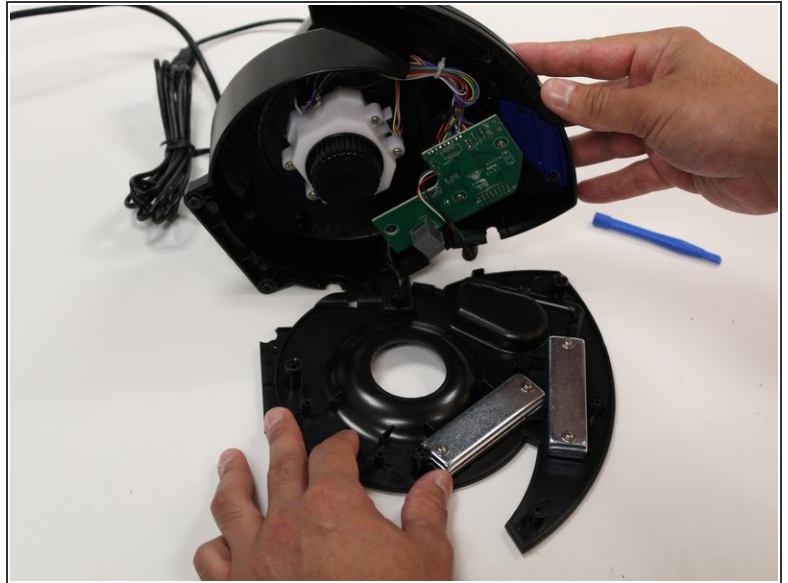
- ❗ Be sure to disconnect the controller from the power source before disassembling.
- Turn the controller upside down.
- Remove the 20 mm J1 JIS head screw.
- Remove the six 12 mm J1 JIS head screws.
- Remove the two 6 mm J1 JIS head screws.

Step 2



- Insert opening tool or finger into the divet located beneath the USB port.

Step 3 — Bottom Panel



- Gently pull the panel away from the controller.

To reassemble your device, follow these instructions in reverse order.