



HP Pavilion x360 m1-u001dx Keyboard Replacement

If keys are malfunctioning, this guide will explain how to replace your keyboard on the HP Pavilion x360 m1-u001dx.

Written By: Katie



This document was generated on 2020-11-28 06:05:49 AM (MST).

INTRODUCTION

If keys are malfunctioning (sticking or not registering), this guide will explain how to replace your keyboard. To replace your keyboard, you will need to know how to use a screwdriver. Small parts (screws) may be a swallowing hazard for young children; keep all parts in a secure location.



TOOLS:

- [Metal Spudger](#) (1)
 - [Phillips #00 Screwdriver](#) (1)
 - [iFixit Opening Tools](#) (1)
 - [Heavy-Duty Spudger](#) (1)
-

Step 1 — Keyboard



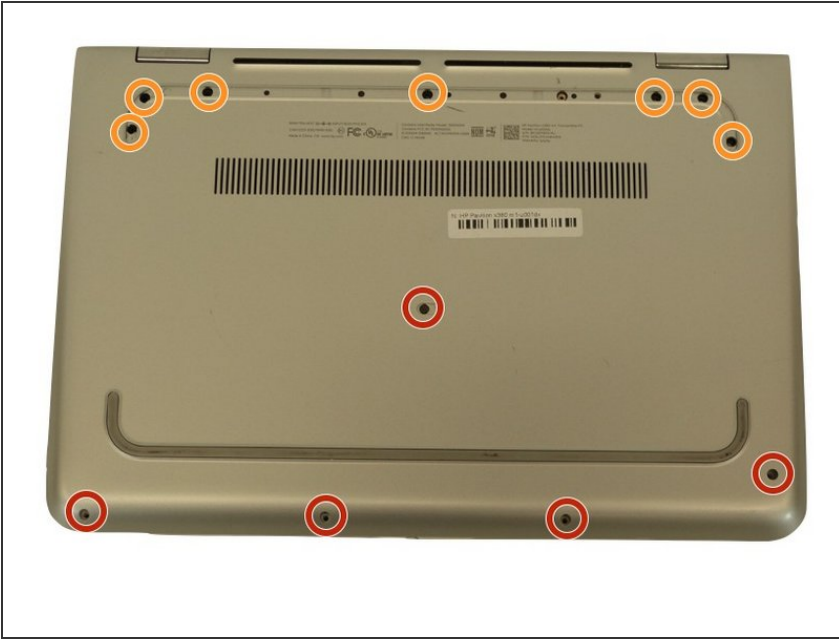
- Power off your device and disconnect all external devices connected to the laptop.
- ⚠ Working on your device while it is powered on may cause damage to the laptop or result in electric shock.

Step 2



- Flip the laptop over and remove the rubber foot with a Metal Spudger.

Step 3



- Remove the screws from the bottom of the laptop with a Phillips 00 Screwdriver.
- 5 Phillips 2.4 x 5.7 mm screws
- 7 Phillips 2.0 x 5.0 mm screws
- ⓘ Keep the different sized screws separate for future replacement.

Step 4



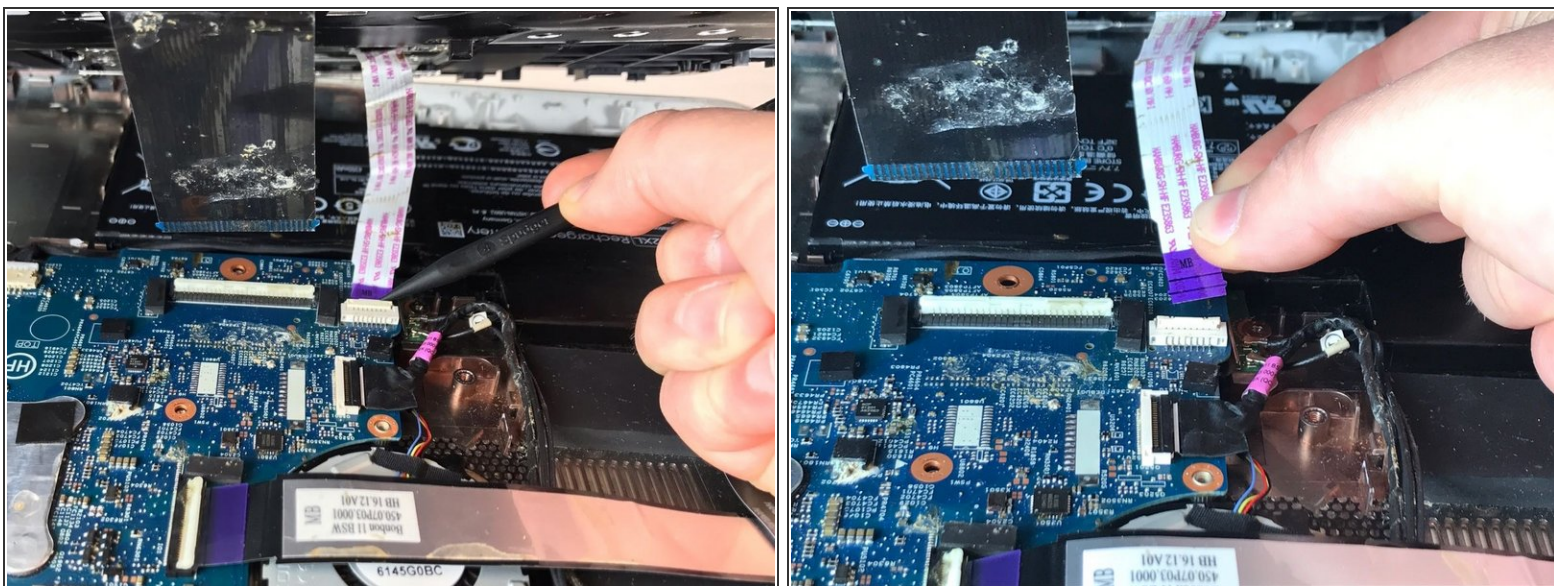
- Flip the laptop back over and open it; the keyboard should be facing upwards.
 - Using the Plastic Opening Tool, separate the keyboard from the base of the laptop.
- ⚠ The keyboard is connected to the motherboard with cable ribbons, so be very gentle and careful when lifting the keyboard.

Step 5



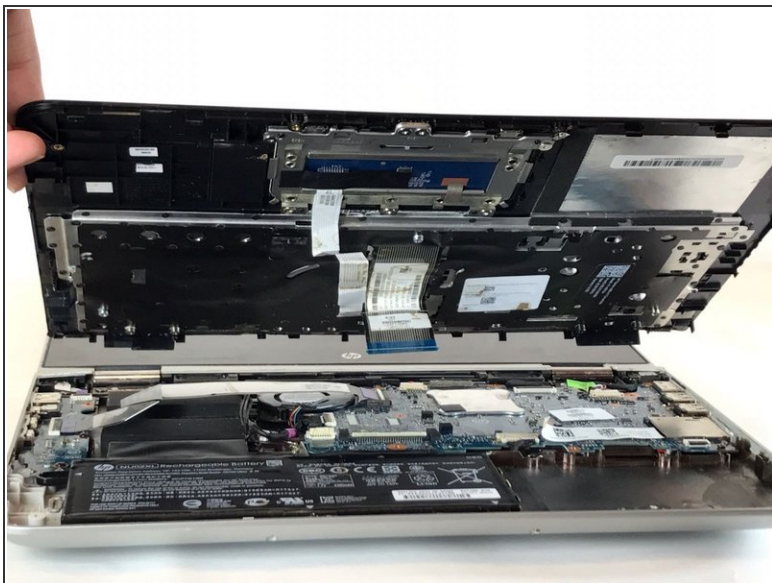
- Raising the keyboard, disconnect the first of two cable ribbons with the Heavy-Duty Spudger.
- Gently flip up the white plastic lock connecting the ribbon cable to the motherboard.
- Use the blue plastic tab on the ribbon cable to disconnect the ribbon cable from the lock.

Step 6



- Gently flip up the white plastic lock connecting the second ribbon cable to the motherboard with the Heavy-Duty Spudger.
- Use the blue purple tab on the ribbon cable to disconnect the ribbon cable from the lock.

Step 7



- After the ribbon cables are disconnected, gently lift up the keyboard to disconnect it from the base of the laptop.

To reassemble your device, follow these instructions in reverse order.