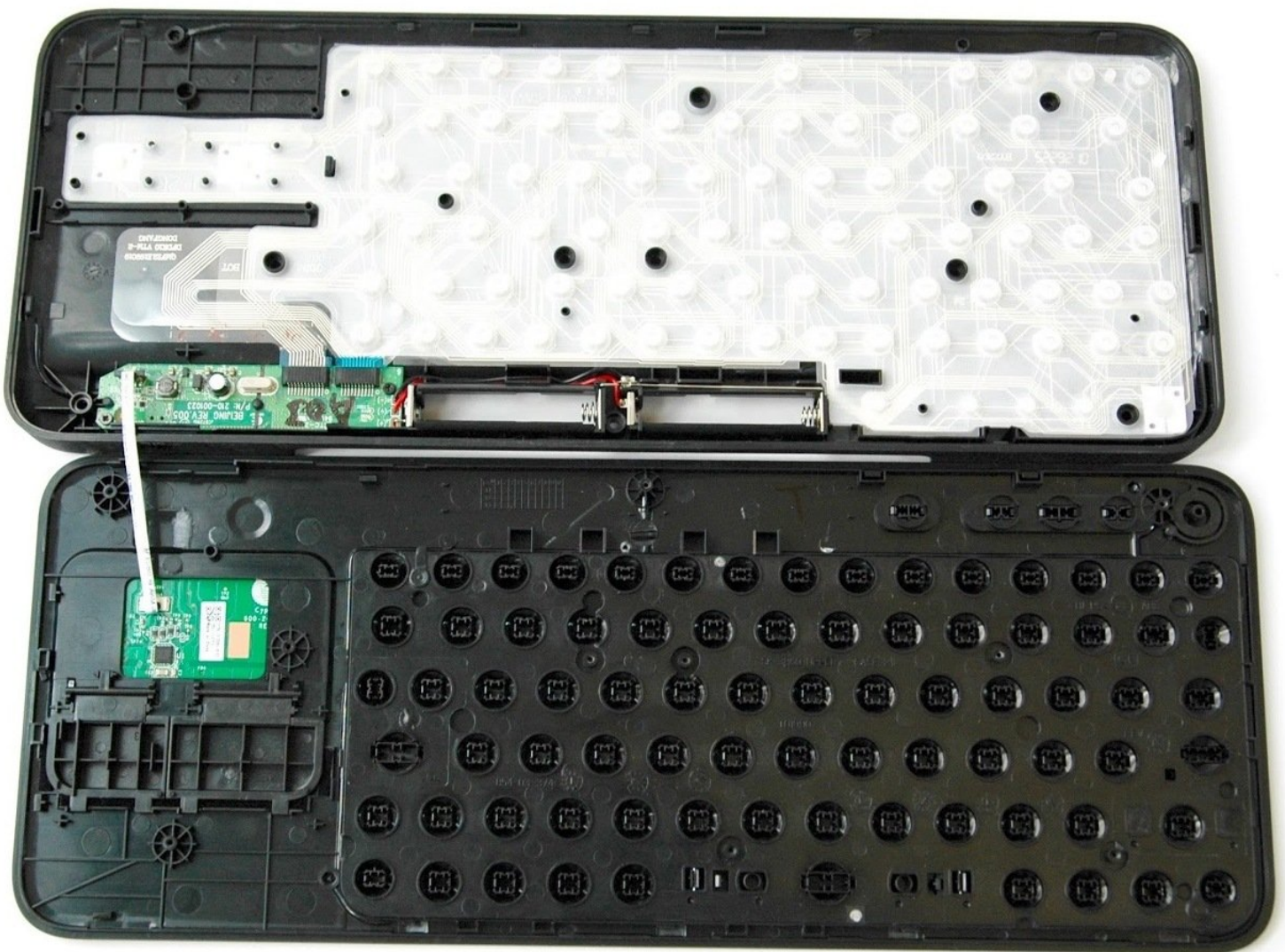




# Logitech Harmony Smart Keyboard Back Panel

This guide will show you how to open your keyboard to replace internal components.

Written By: Hayley Nichols



## INTRODUCTION

This is a prerequisite guide that will instruct you on how to properly open your keyboard. This will be helpful for replacing internal components without damaging your device.



### TOOLS:

- [Spudger](#) (1)
  - [Phillips #1 Screwdriver](#) (1)
-

## Step 1 — Back Panel



- Turn keyboard over to the backside.

## Step 2



- Press and slide up on the upper battery latch, using both thumbs.



### Step 3



- Remove the two AA batteries and set them aside.

### Step 4



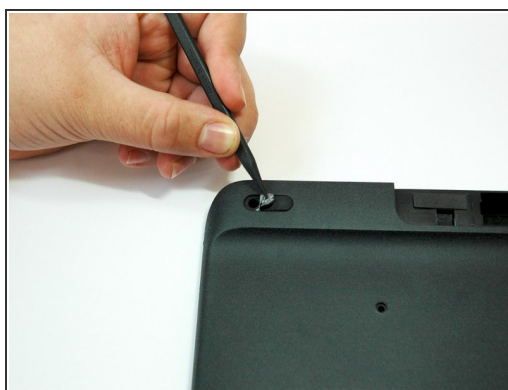
- Unscrew all five 4.0 mm screws, using Phillips #1 screwdriver.

## Step 5



- Peel off the center sticker to reveal two hidden 4.0 mm screws.
- Unscrew these two screws with a Phillips #1 screwdriver.

## Step 6



- Lift both top left and top right rubber stickers halfway, using the sharp end of the plastic spudger.
- Unscrew a total of two 4.0 mm screws, under the rubber stickers, using a Phillips #1 screwdriver.

## Step 7



- Unscrew the top center 4.0 mm screw, in the battery compartment, using the Phillips #1 screwdriver.

**i** Now, you should have a total of ten 4.0 mm screws set aside.

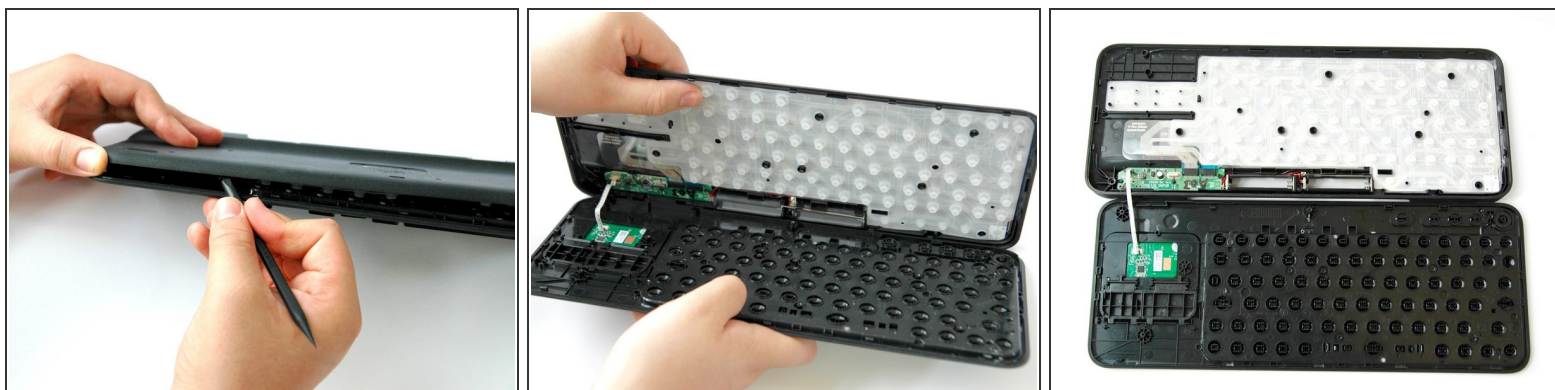
## Step 8




- Wedge the flat end of the spudger between the back panel and front panel.
- Slide the flat end of the spudger from right to left to pry the two panels apart.




## Step 9



- Separate the back panel from the front panel completely, using both hands.

 A white ribbon flex cable will remain connected to both panels.

 Pull the panels apart slowly and gently, or the white ribbon flex cable may be unsafely removed.

To reassemble your device, follow these instructions in reverse order.