



Huawei SnapTo G-620 Motherboard Replacement

Replace your SnapTo's dysfunctional motherboard.

Written By: Brian Omer Uzan



INTRODUCTION

If your Huawei SnapTo G-620 won't turn on, then the motherboard may need to be replaced. This guide shows you how to replace the motherboard in your SnapTo.

TOOLS:

- [iFixit Opening Tools](#) (1)
 - [Spudger](#) (1)
 - [Tweezers](#) (1)
 - [64 Bit Driver Kit](#) (1)
-

Step 1 — Battery



- Pry open the back cover with your fingernail, using the divot to the lower left hand corner.
- Remove all fifteen 4mm Phillips J00 screws on the back panel.
- Using a metal spudger or your fingernail, remove the back panel.

Step 2



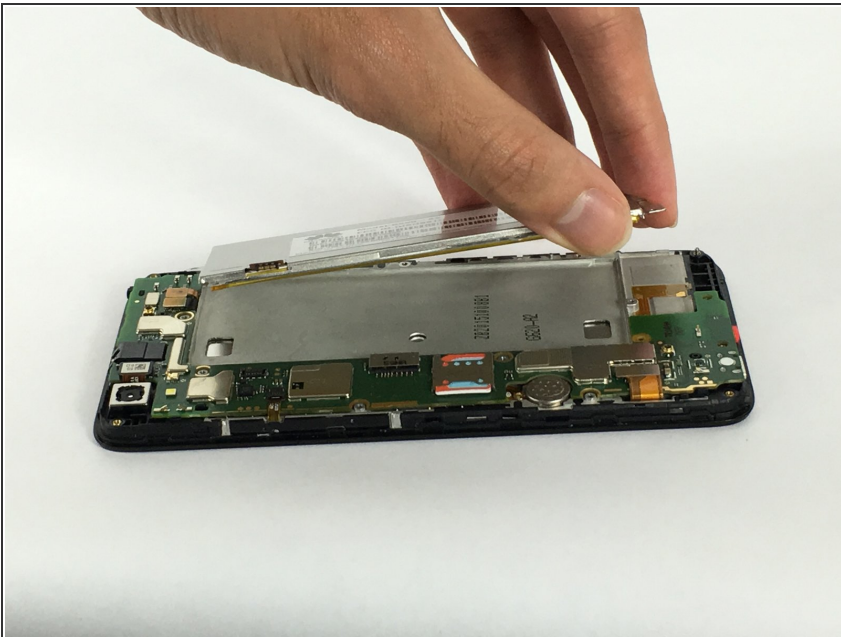
- Remove the pictured 4mm Phillips J00 screw.

Step 3



- Use a plastic opening tool to remove the pictured flat-top connector.

Step 4



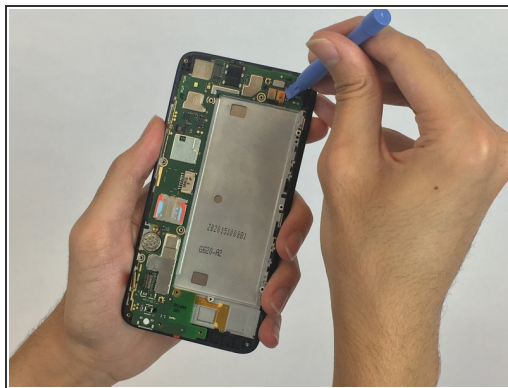
- Remove the battery.

Step 5 — Motherboard



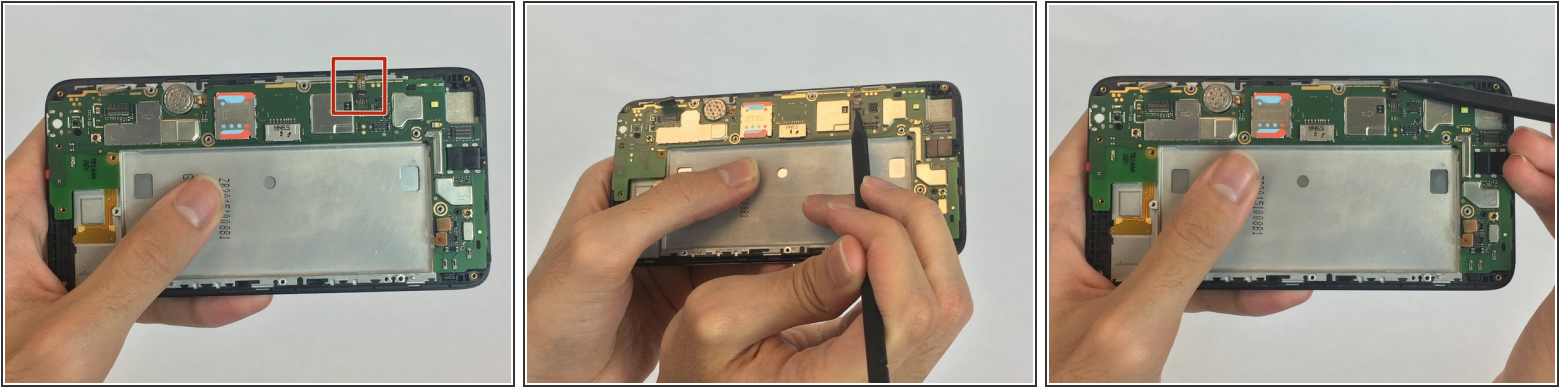
- Use a plastic opening tool to remove the pictured flat-top connector.
- Using the plastic opening tool remove the camera.

Step 6



- Use the plastic opening tools to remove all the remaining flat-top connectors

Step 7



- Using the spudger, pry open the zif connector, and remove the cable.

Step 8



- Using flat-side of spudger, remove the motherboard.

To reassemble your device, follow these instructions in reverse order.