



Archived

LG G6 Battery Replacement

Use this guide to replace the battery on your...

Written By: tillman Harrell



INTRODUCTION

Use this guide to replace the battery on your LG G6.

TOOLS:

iOpener (1)
Phillips #000 Screwdriver (1)
Metal Spudger (1)
Spudger (1)
Suction Handle (1)
Plastic Cards (1)

PARTS:

LG G6 Battery (1)

Step 1 — iOpener Heating



- ① We recommend that you clean your microwave before proceeding, as any nasty gunk on the bottom may end up stuck to the iOpener.
- Place the iOpener in the center of the microwave.
 - ⚠ For carousel microwaves: Make sure the plate spins freely. If your iOpener gets stuck, it may overheat and burn.

Step 2



- Heat the iOpener for **thirty seconds**.
- Throughout the repair procedure, as the iOpener cools, reheat it in the microwave for an additional thirty seconds at a time.

⚠ Be careful not to overheat the iOpener during the repair. Overheating may cause the iOpener to burst. Do not attempt to heat over 100°C (212°F).

⚠ Never touch the iOpener if it appears swollen.

⚠ If the iOpener is still too hot in the middle to touch, continue using it while waiting for it to cool down some more before reheating. A properly heated iOpener should stay warm for up to 10 minutes.

Step 3



- Remove the iOpener from the microwave, holding it by one of the two flat ends to avoid the hot center.

⚠ The iOpener will be very hot, so be careful when handling it. Use an oven mitt if necessary.

Step 4 — Alternate iOpener heating method



ⓘ If you don't have a microwave, follow this step to heat your iOpener in boiling water.

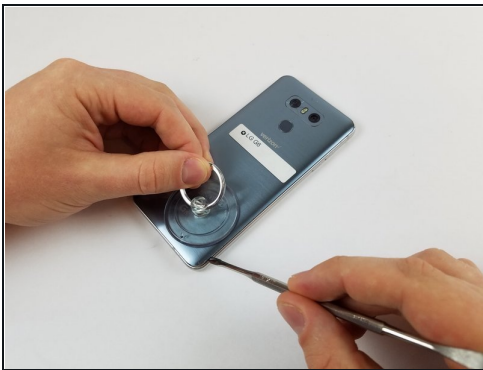
- Fill a pot or pan with enough water to fully submerge an iOpener.
 - Heat the water to a boil. **Turn off the heat.**
 - Place an iOpener into the hot water for 2-3 minutes. Make sure the iOpener is fully submerged in the water.
 - Use tongs to extract the heated iOpener from the hot water.
 - Thoroughly dry the iOpener with a towel.
- ⚠ The iOpener will be very hot, so be careful to hold it only by the end tabs.
- Your iOpener is ready for use! If you need to reheat the iOpener, heat the water to a boil, turn off the heat, and place the iOpener in the water for 2-3 minutes.

Step 5 — Battery



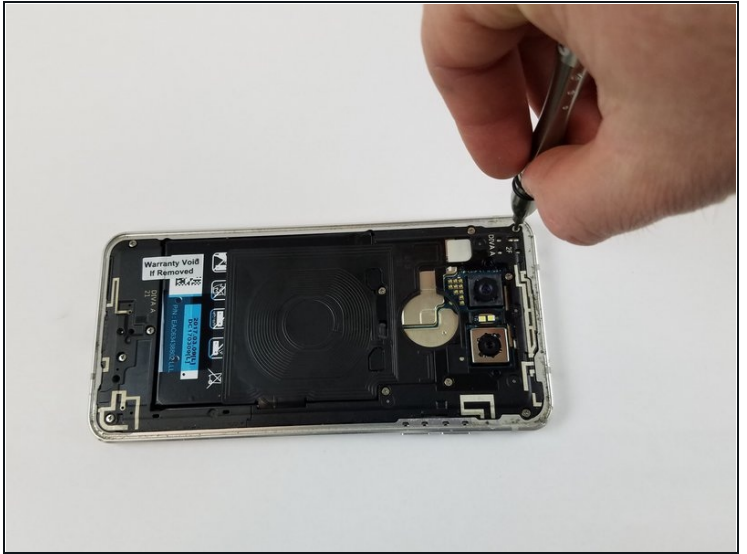
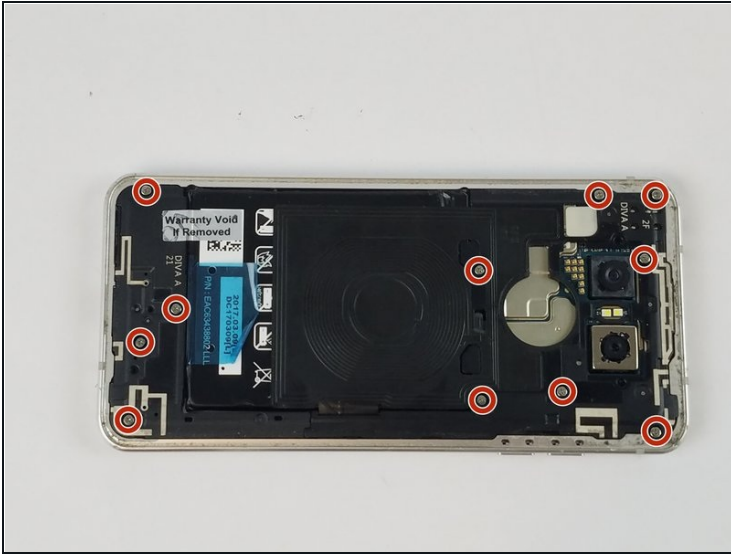
- Apply the heated iOpener to the edge of the phone for about 2 minutes.

Step 6



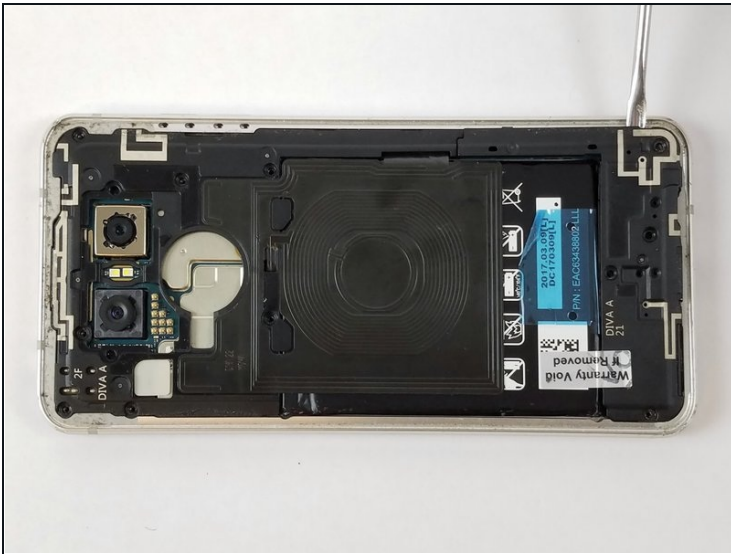
- When the back panel is heated, apply the suction cup close to a corner of the phone. Lift up and insert a halberd spudger or opening pick under the rear glass.
- Slide the blade of the Halberd spudger along the edge of the phone to separate the adhesive.
- Follow around the edge of the phone, and use an opening pick or other tool (such as a [plastic card](#)) to keep already opened portions from re-adhering.

Step 7



- Using a Philips 000 bit, remove 11 screws from the highlighted locations.

Step 8



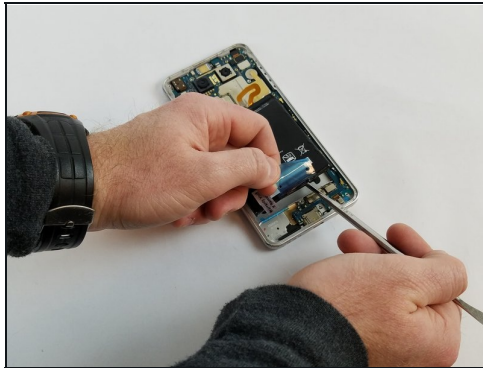
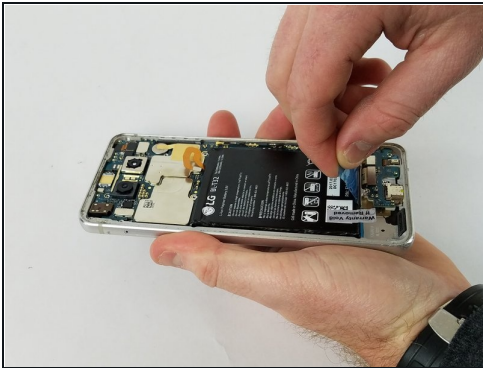
- With the screws removed, remove the lower frame components, followed by the upper mid-frame. Both components can be removed with a little prying.

Step 9



- Begin battery removal by very gently prying off the power ribbon with a plastic card or a nylon spudger.

Step 10



- Firmly pull the blue tab. Be careful not to bend the battery as you pull it away from the adhesive.

⚠ Do not use a knife as you may pierce the battery.

To reassemble your device, follow these instructions in reverse order.