



Bissell SmartClean 1605 Front Cover Replacement

Remove the front sensor casing to get access to the sensors circuit board/wiring.

Written By: Michael Derrenbacher



INTRODUCTION

This guide is for removing the front cover of your device. If you need to replace or clean the sensor or it's wiring you will need to remove this cover.



TOOLS:

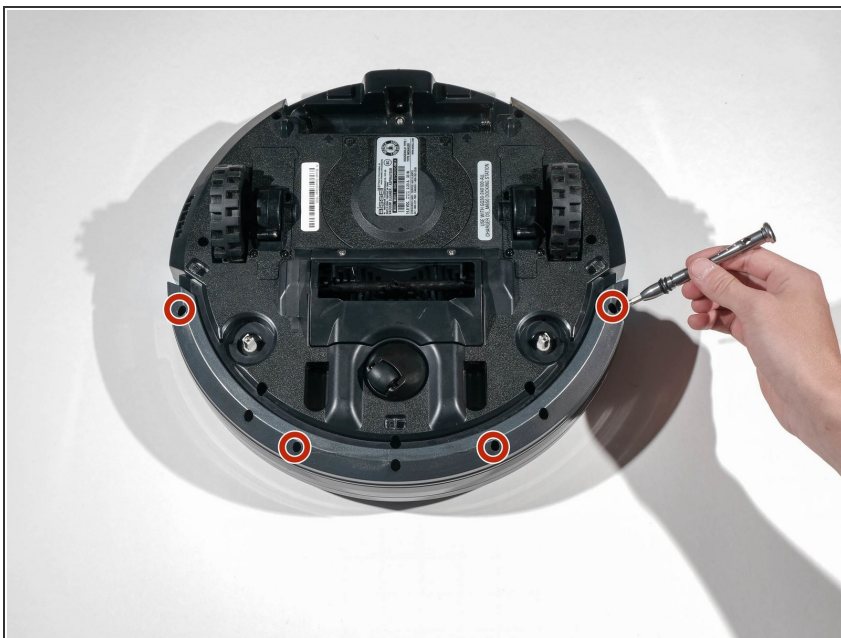
- [Phillips #2 Screwdriver](#) (1)
-

Step 1 — Front Cover



- Power off your device

Step 2



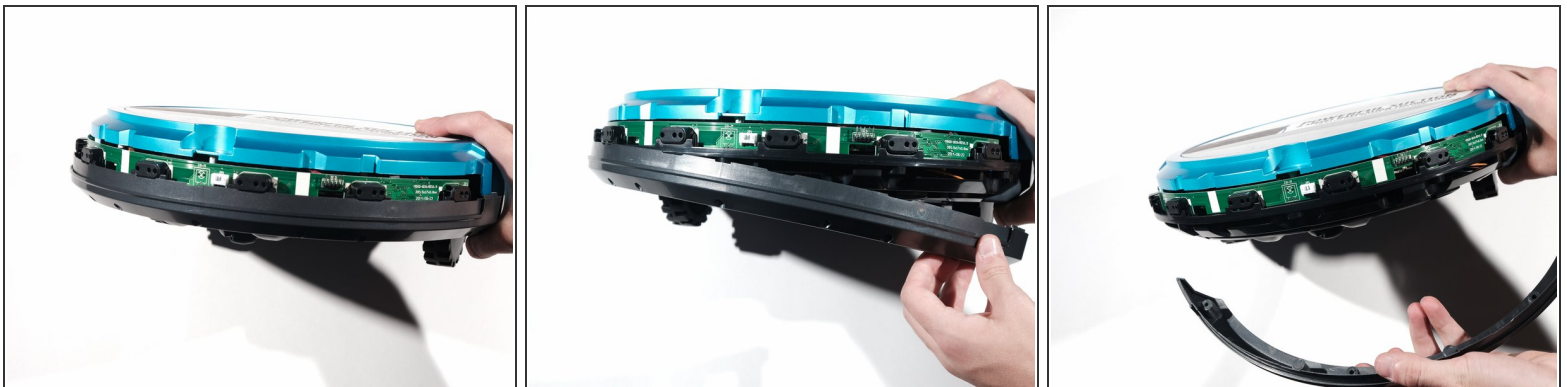
- Flip your device and unscrew the marked screws using a phillips screwdriver.

Step 3



- Gently pry off the top half of the front cover
 - Remove the wires from the socket.
- i** Don't pull the wires too hard, they can become disconnected from the plastic plug.

Step 4



- Once the top cover is removed, pry off the bottom casing.

To reassemble your device, follow these instructions in reverse order.