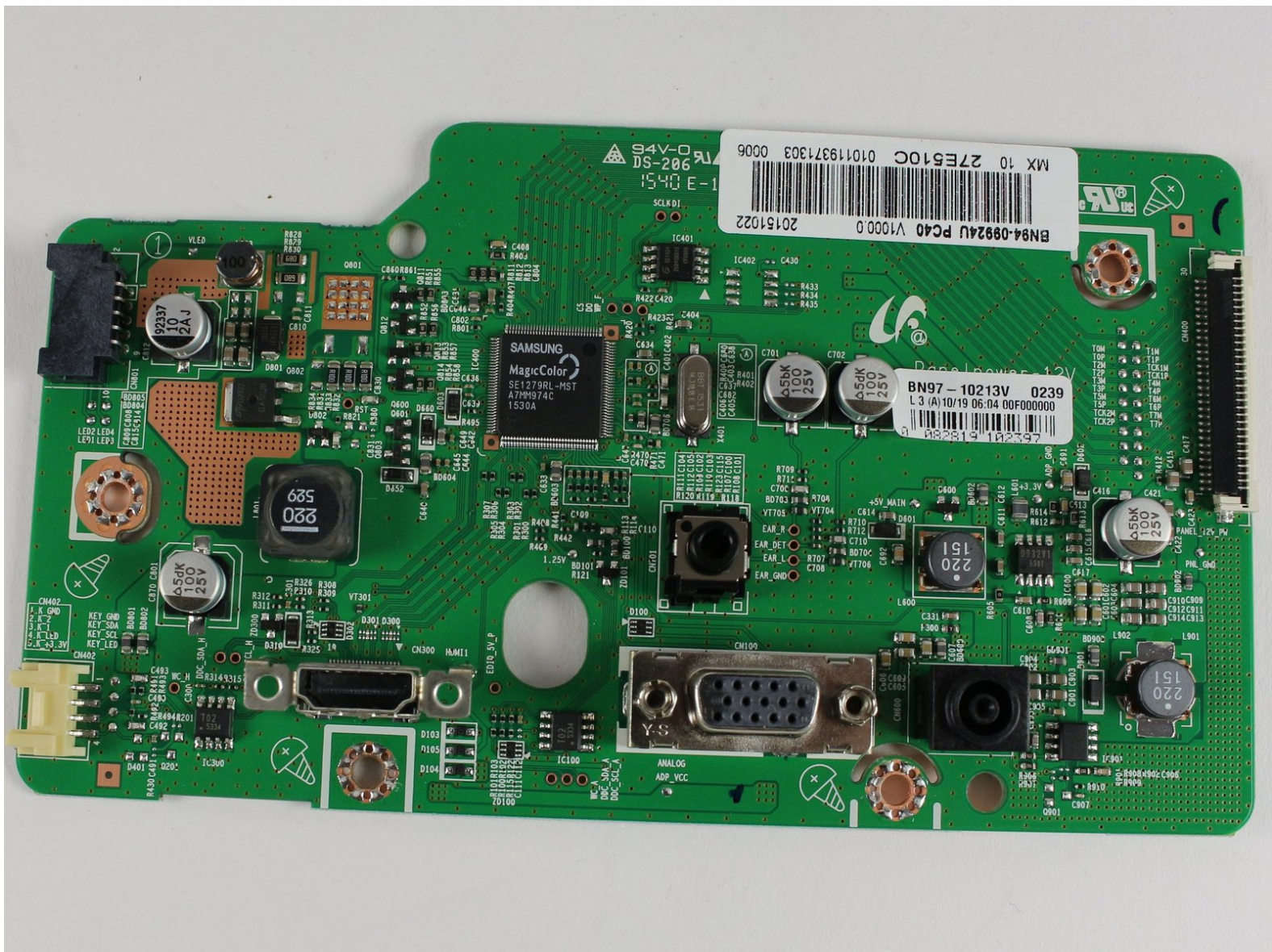




# Samsung 27E510C HDMI Port Replacement

Replacing the HDMI display port of a Samsung 27E510C monitor.

Written By: Jesus Blanco



## INTRODUCTION

The HDMI Port allows for an external source to display an image onto the monitor by using an HDMI cable. If the HDMI Port is damaged, an image might not display onto the monitor.



### TOOLS:

- [Phillips #1 Screwdriver](#) (1)
- [Heavy-Duty Spudger](#) (1)
- [Soldering Iron](#) (1)
- [Desoldering Braid](#) (1)



### PARTS:

- [HDMI Female Connector](#) (1)

## Step 1 — Back Panel



- Use the #1 Phillips head screw driver to remove each 13.75mm length screw from the rear panel.

**i** The screw alone with the ports is a different size than the rest, its length is 12mm.

## Step 2

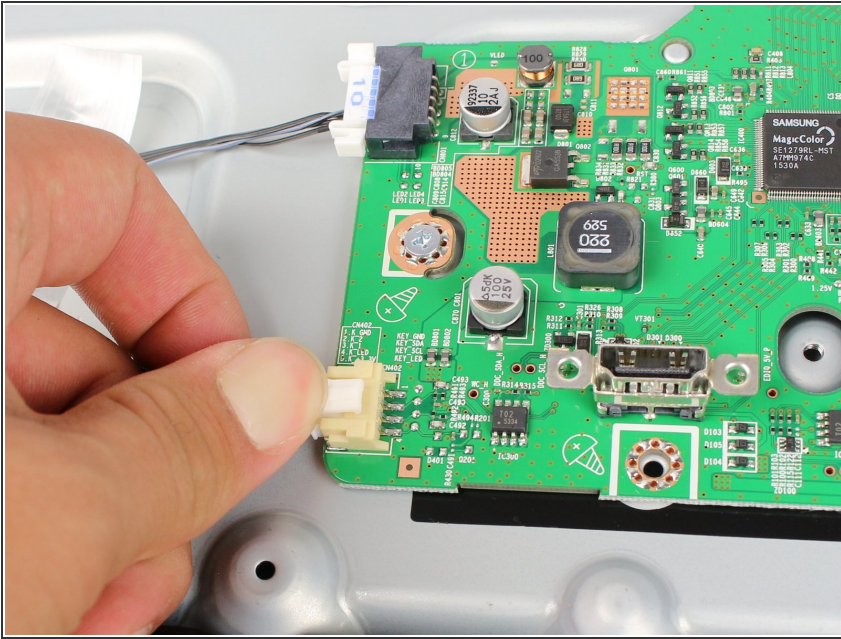


- Insert the heavy duty spudger in between the monitors back panel and its frame.
- Use the heavy duty spudger to pry open the back panel.

**!** Over aggressive prying could break the tabs holding the back panel in place.

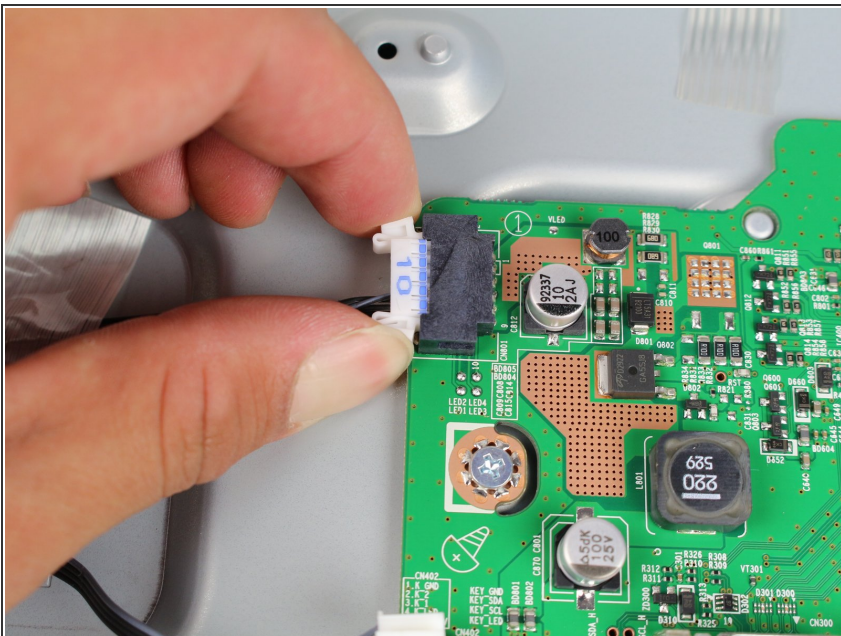


## Step 3 — Motherboard



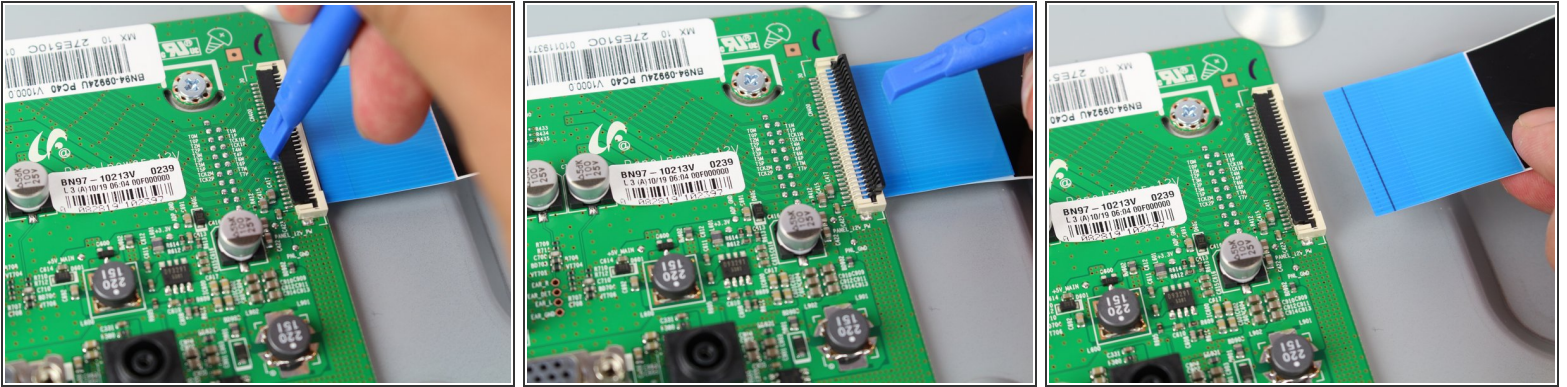
- Remove the navigation button connector by pulling while holding down its thumb tab.

## Step 4



- Remove the screen connector by gripping its sides and gently pulling while wiggling back and forth.

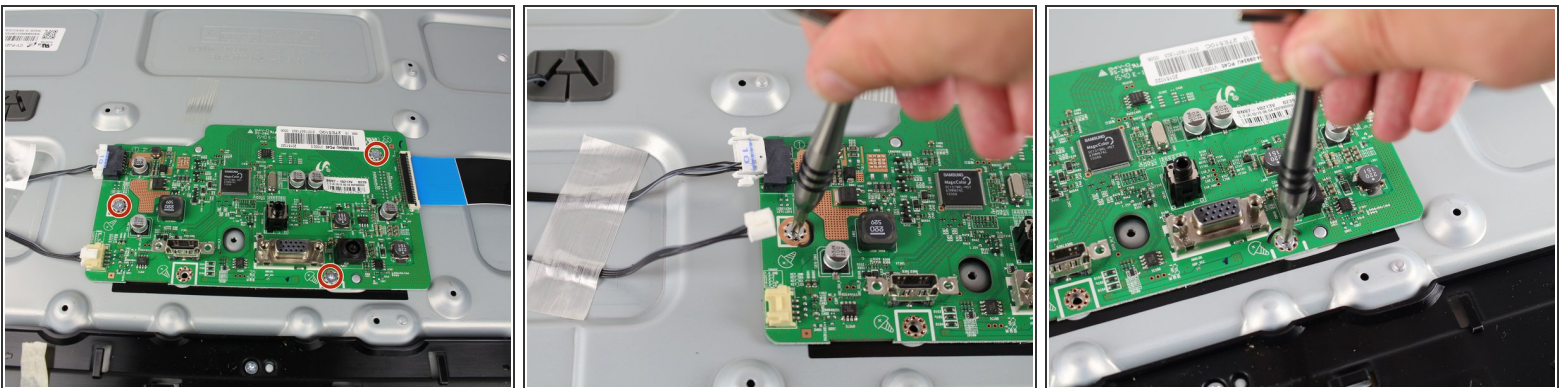
## Step 5



- For the ribbon cable, Lift the tab from the side facing the inside of the mother board with your fingernail or a spudger.
- Remove the cable by pulling while lifting slightly.

⚠ If the cable does not come out easily, than the secure tab may not be fully opened.

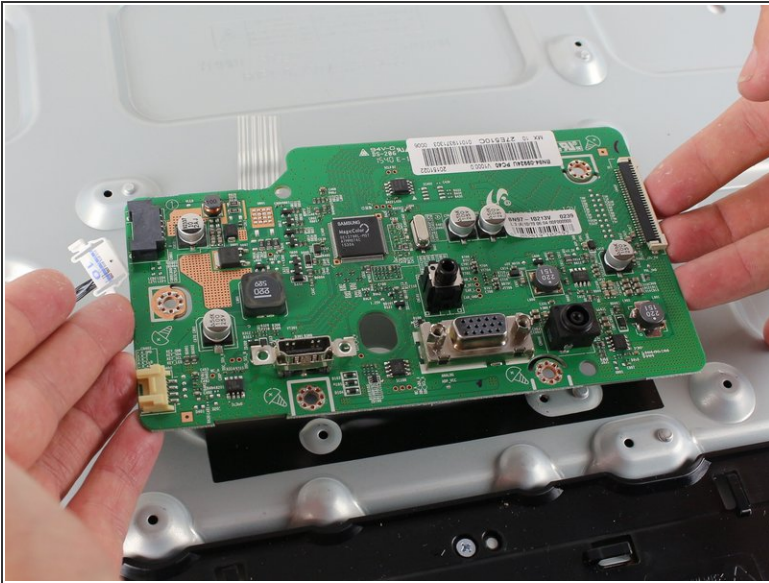
## Step 6



- Remove each of the 5mm length screws attaching the motherboard to the body of the monitor using a #1 Phillips head screwdriver.

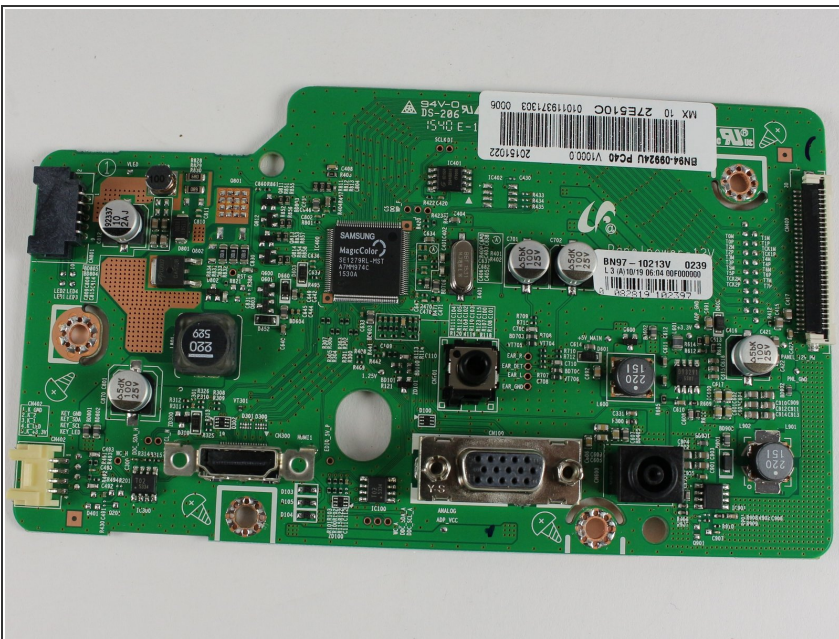


## Step 7



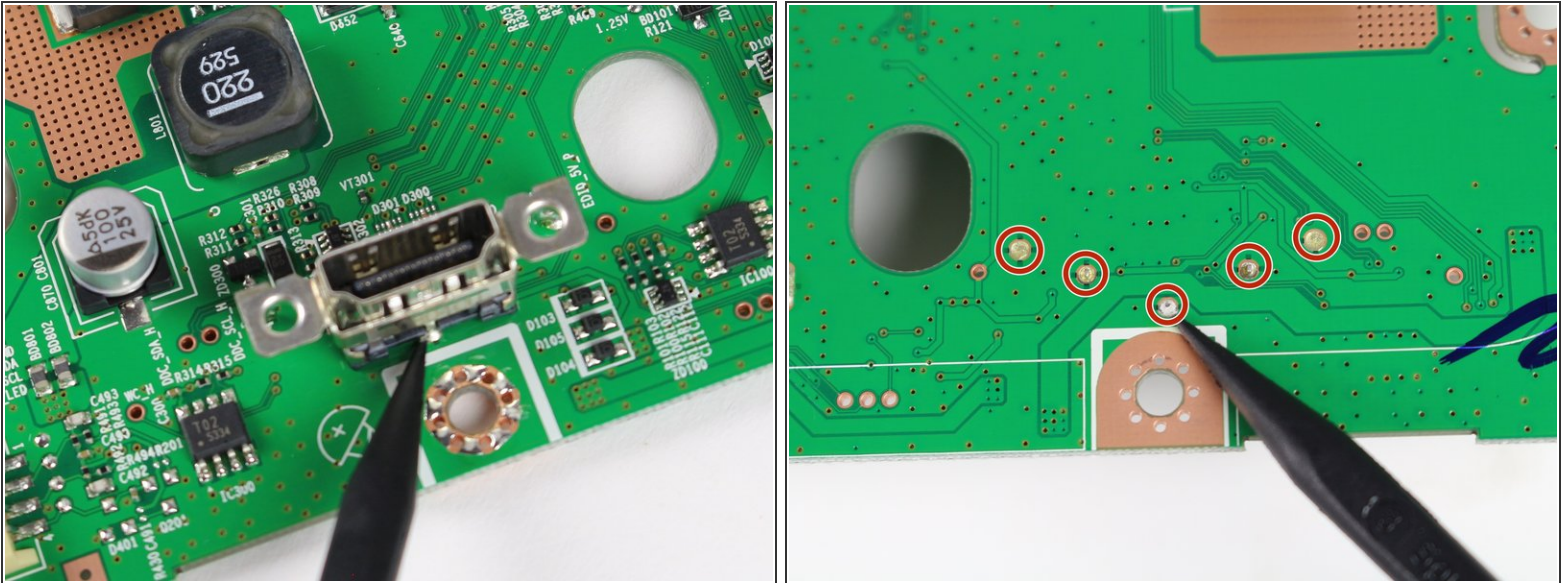
- Using both hands, lift the board off of the monitor body by the motherboards base.

## Step 8 — HDMI Port



- Gently place the motherboard on a static free surface.
- ⚠ It is imperative that this is done on a static free surface, as any discharge of static electricity can 'fry' your motherboard and render it useless.

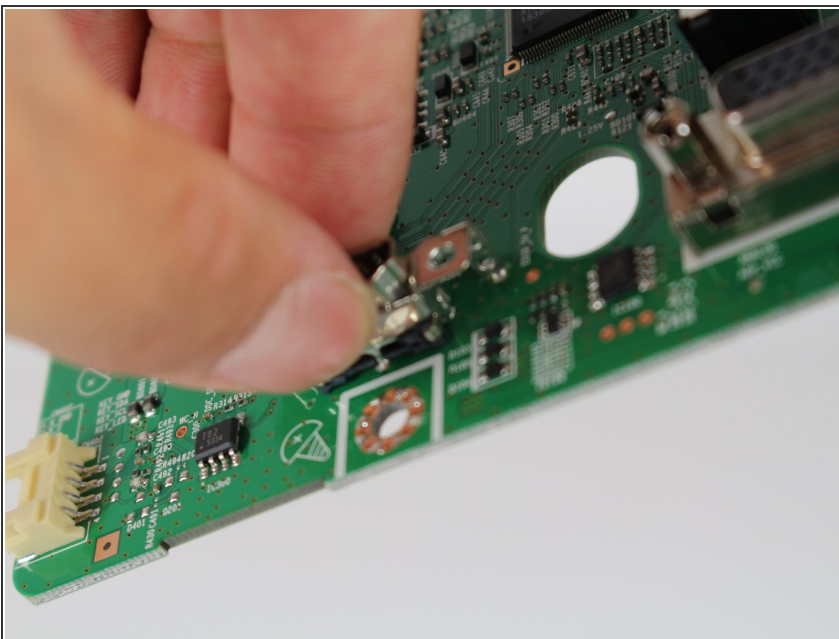
## Step 9



- [Desolder](#) each of the indicated leads located on the back of the motherboard.

**i** The HDMI Port should fall off of the board after all solder is removed.

## Step 10



- If the HDMI Port does not fall off the motherboard, try tugging it with your hand.

**!** The HDMI Port may be too hot to touch right after desoldering.

**!** Excessive tugging could damage the motherboard.

To reassemble your device, follow these instructions in reverse order. The process of soldering the components back onto the board is similar to desoldering, the difference is that instead of using the Solder Wick, to suck up the solder, you're using Solder Wire to add solder.