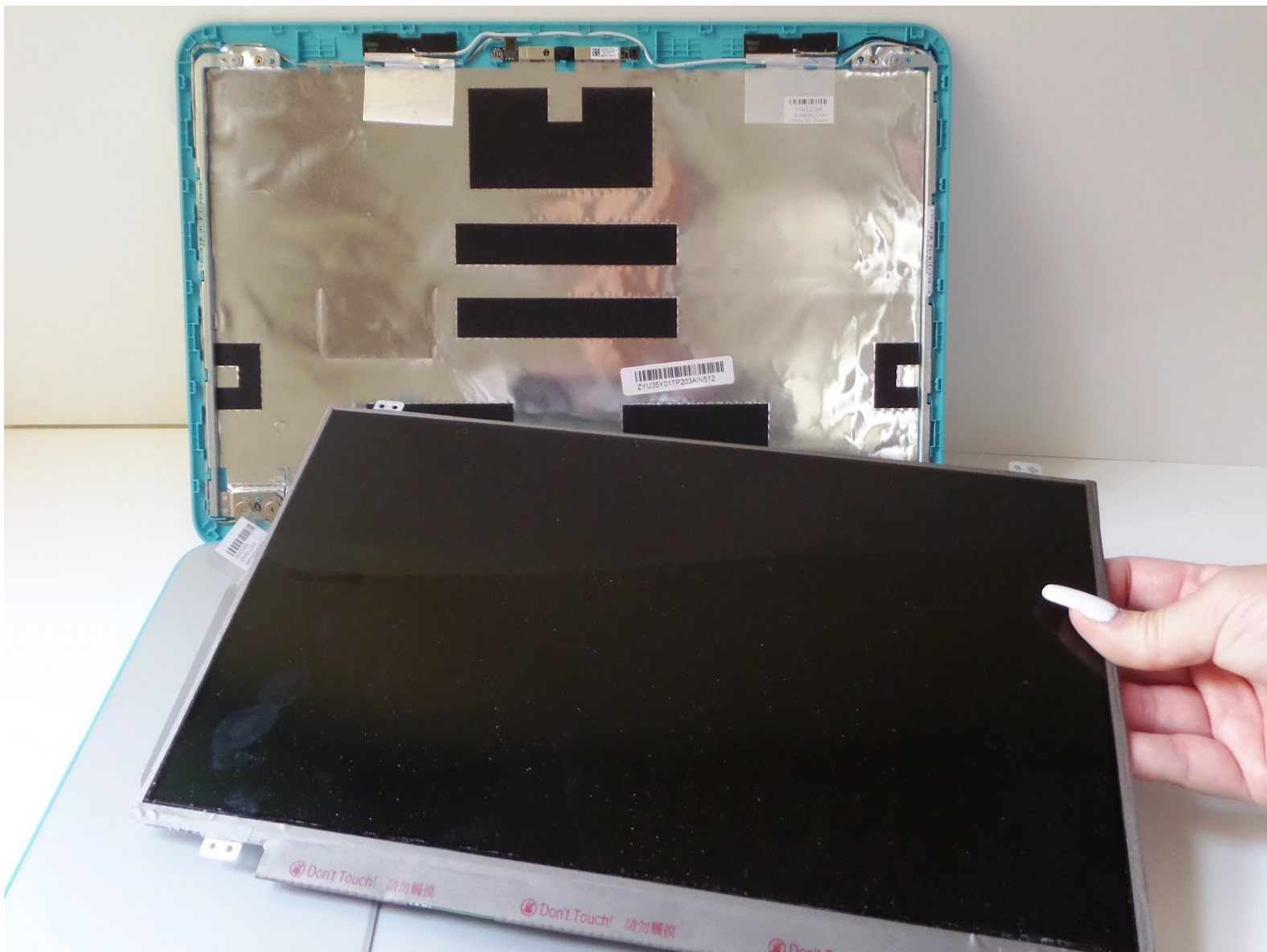




HP Pavilion 14-q020nr Screen Replacement

This guide will show you how to remove and replace a broken screen on the HP Pavilion 14-q020nr Chromebook.

Written By: Jenell Chase



INTRODUCTION

The screen is a delicate part of the Chromebook, and can be easily cracked or damaged. This guide will show you how to replace a HP Pavilion 14-q020nr Chromebook screen.

TOOLS:

- [Metal Spudger](#) (1)
 - [Phillips #1 Screwdriver](#) (1)
-

Step 1 — Screen



- With the laptop facing you, open the clamshell. Be sure to turn the power off using a long press before beginning.
 - Remove the screw covers on both sides of the screen bezel by sliding a metal spudger into the crevice and gently peeling the cover away.
- ⚠ If the laptop turns on at any point during the repair, quickly turn it off with a long press

Step 2



- Remove both 4mm screws using a Phillips Head 1 screwdriver

Step 3



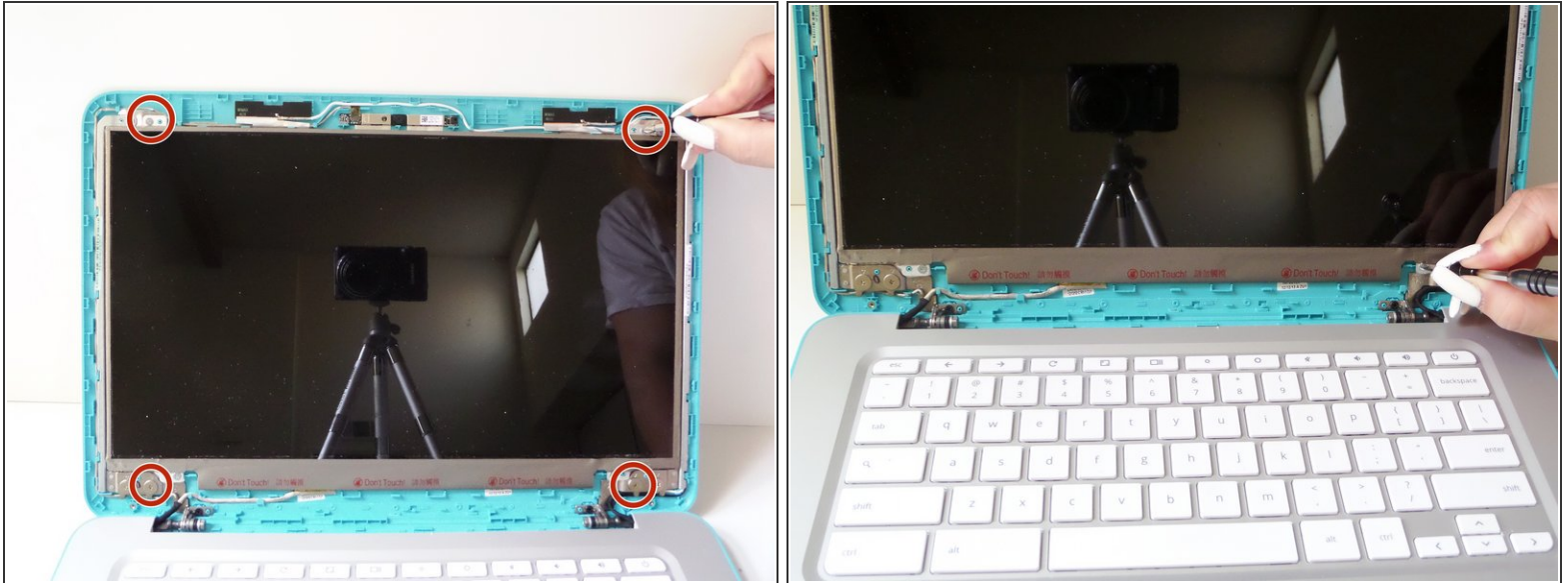
- Snap off the screen bezel by prying with your fingers in between the bezel and the screen.
- Continue around the screen, gently prying and lifting.
- ⓘ You will hear a series of audible clicks as the bezel disconnects from the other hardware.

Step 4



- Carefully loosen the bottom bezel. Eventually it will snap free from the rest of the clamshell.
- Pull hinge up and forward to detach it from the Chromebook. The bezel and hinge cover will remain attached.

Step 5



- Remove the four 4mm screws within the metal tabs on the top and bottom of the screen using a Phillips Head 1 screwdriver.

Step 6



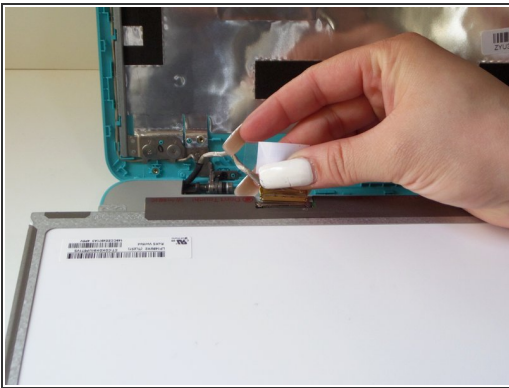
- Gently pry the metal tabs off of the screen assembly while holding the screen to unlock them.
 - Grab the screen by its unlocked tabs and tilt it down and away from the screen assembly, laying it down.
- ⚠ The new screen may scratch, to avoid this put a cloth down on the keyboard before laying down the screen.

Step 7



- Peel off the barcode sticker to reveal the screen connector plug.

Step 8



- Slide the connector out from its plug on the screen using your fingers to completely disconnect the screen.
- Using your fingers, slide the connector out from its plug attached to the screen to completely disconnect the old screen panel

To reassemble your device, follow these instructions in reverse order.