



Acer Chromebook C710-2856 Wi-Fi Card Replacement

This guide shows you how to safely remove your old Wi-Fi card and install a replacement.

Written By: John



INTRODUCTION

Use this guide to replace the Wi-Fi card in your device.



TOOLS:

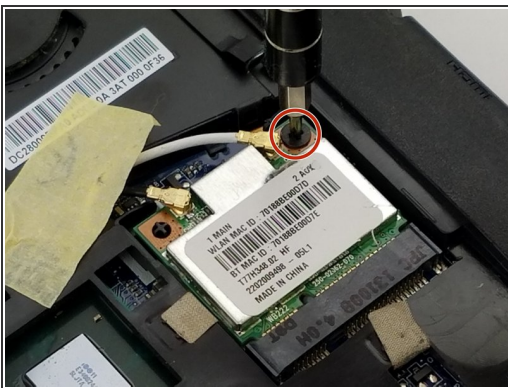
- [iFixit Opening Tools](#) (1)
 - [Phillips #1 Screwdriver](#) (1)
-

Step 1 — Back Cover



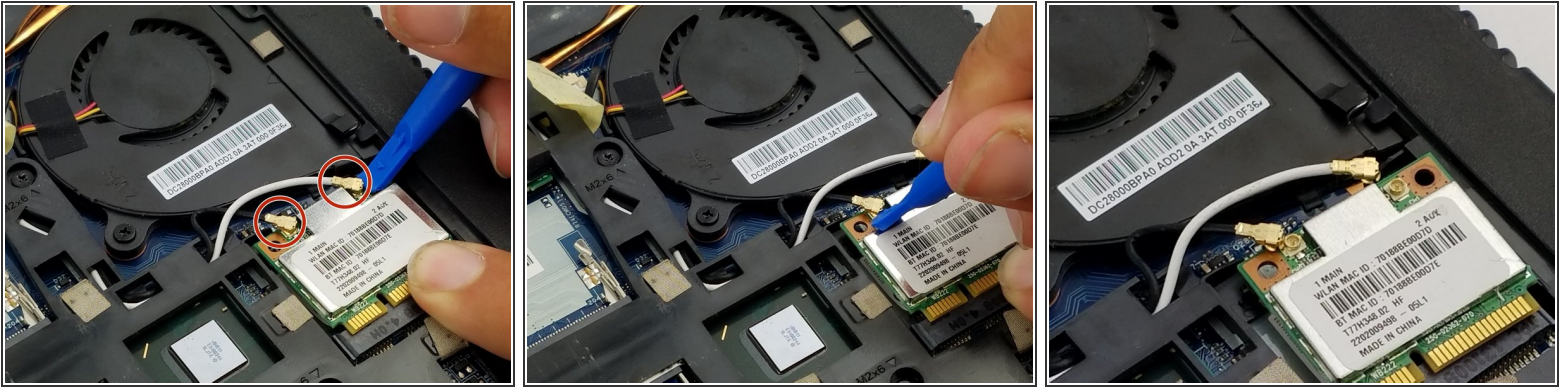
- Flip the device over and remove the 4.3 mm screw using a Phillips #1 screwdriver.
- Remove the back cover.

Step 2 — Wi-Fi Card



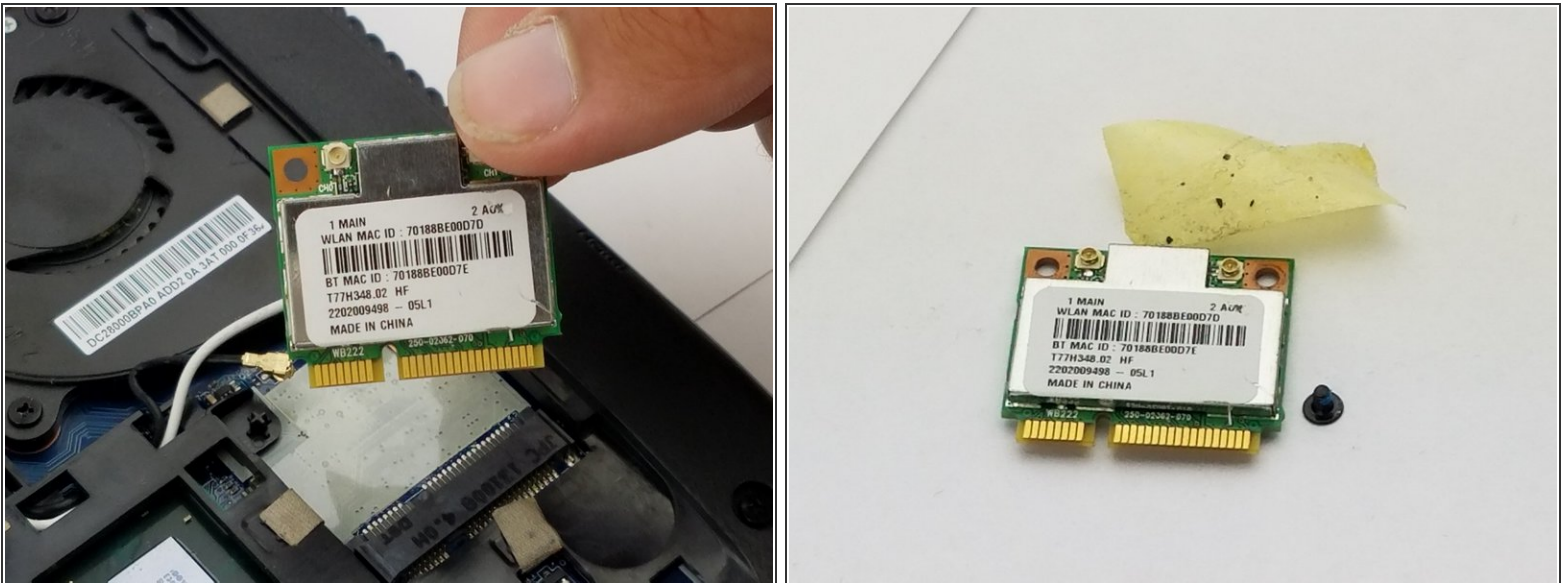
- Using the Phillips #1 screwdriver, remove the screw from the Wi-Fi card.
- Carefully remove the piece of tape to allow for more room to remove the Wi-Fi card.
- Use the blue plastic opening tool to lift and remove the Wi-Fi card from its socket.

Step 3



- Use the blue plastic opening tool and carefully remove the connectors from the Wi-Fi card.

Step 4



- Remove the Wi-Fi card.

To reassemble your device, follow these instructions in reverse order.