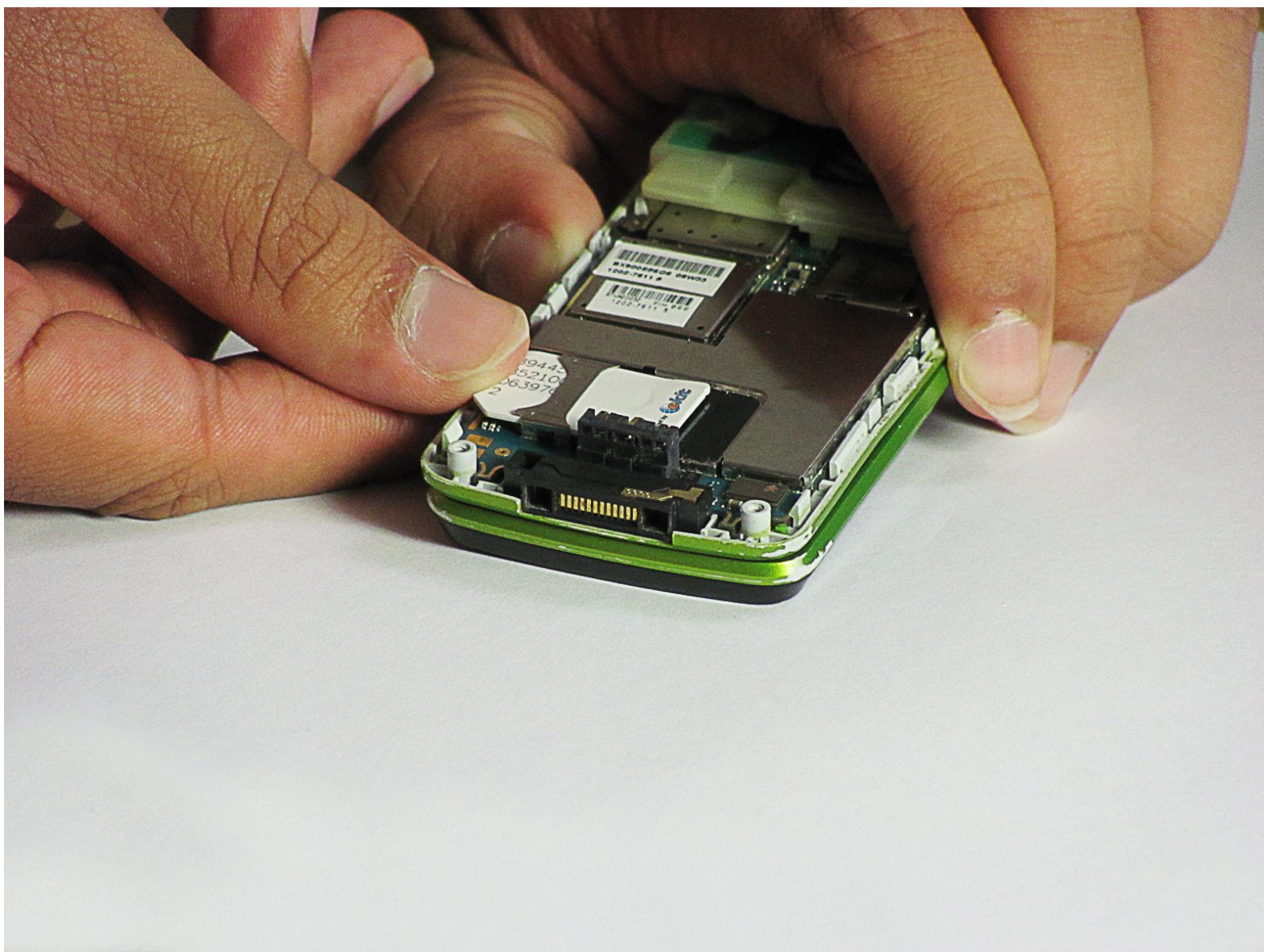




Sony Ericsson TM506 Sim Card Replacement

Install a sim card for the Sony Ericsson TM506 phone.

Written By: Daniel



INTRODUCTION

This guide provides instruction for installing a sim card for the Sony Ericsson TM506 cell phone.



TOOLS:

- [T6 Torx Screwdriver](#) (1)
-

Step 1 — Battery Cover



- Firmly hold the phone between your fingers with your thumb on the battery cover.
- Push down with your thumb until the battery cover comes off.

Step 2 — Back Case



- Unscrew the bottom two 5.4mm screws with a Torx T6 screwdriver.

Step 3



- Remove the two rubber casings for the top two screws with a plastic opening tool.

Step 4



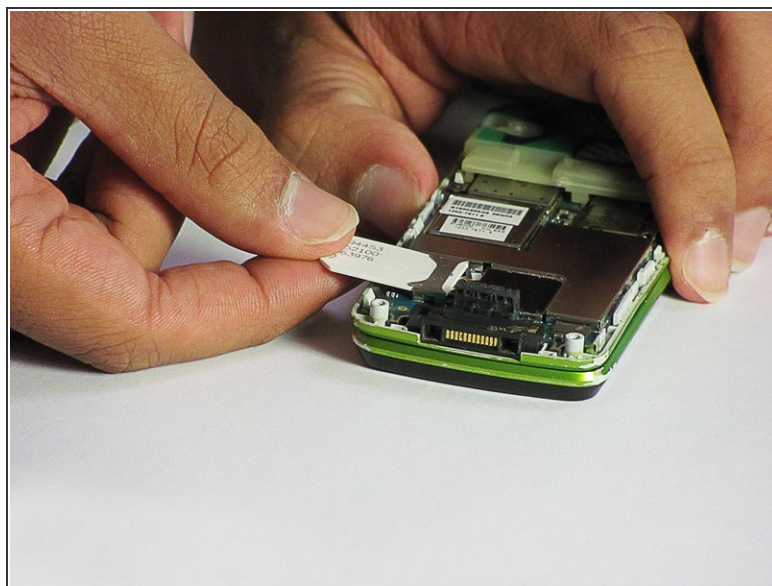
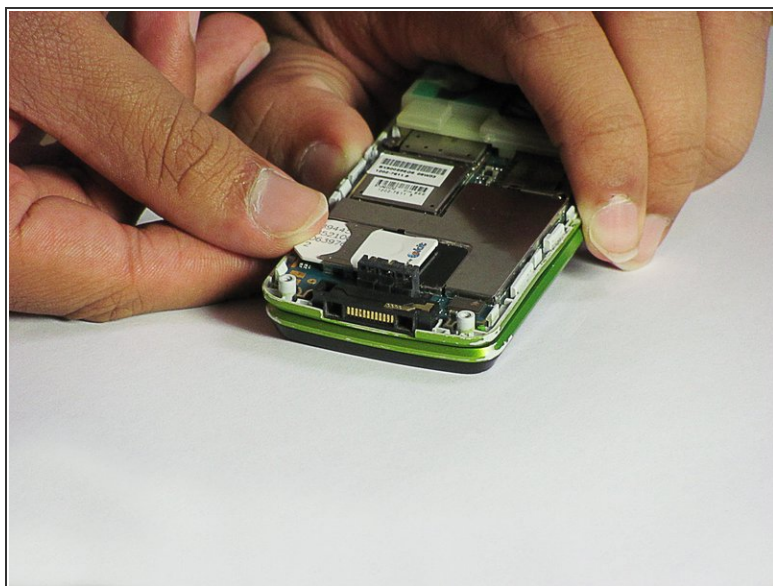
- Unscrew these two 5.4mm screws with a Torx T6 screwdriver.

Step 5



- There are eight snap hooks located around the outer case. Carefully snap these to remove the outer case.

Step 6 — Sim Card



- The Sim card can simply be pulled out through the opening.

To reassemble your device, follow these instructions in reverse order.