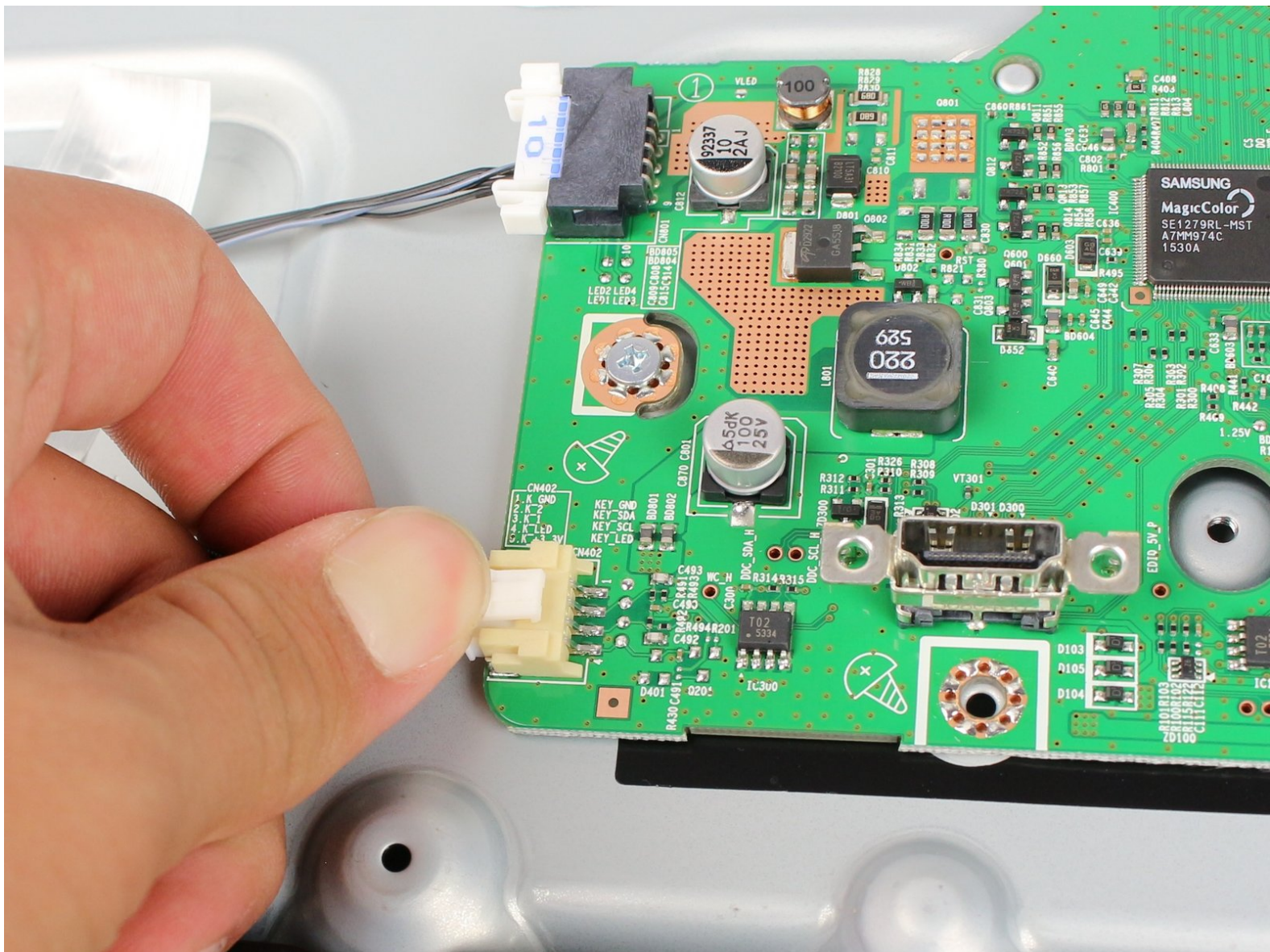




# Samsung 27E510C Motherboard Replacement

This guide will show you how to remove the motherboard from within your monitor.

Written By: giggythore



---

## INTRODUCTION

The motherboard is the electronic hub inside the monitor connecting each of its electrical components, including the navigation button, the screen, and the HDMI/VGA ports.

---

### TOOLS:

- [Phillips #1 Screwdriver](#) (1)
  - [Heavy-Duty Spudger](#) (1)
-

## Step 1 — Back Panel



- Use the #1 Phillips head screw driver to remove each 13.75mm length screw from the rear panel.

**i** The screw alone with the ports is a different size than the rest, its length is 12mm.

## Step 2

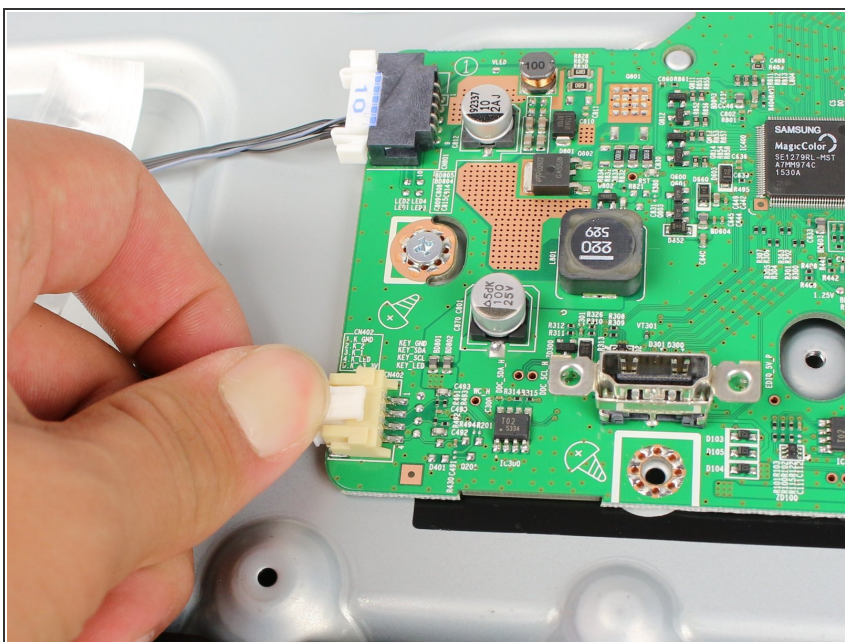


- Insert the heavy duty spudger in between the monitors back panel and its frame.
- Use the heavy duty spudger to pry open the back panel.

**!** Over aggressive prying could break the tabs holding the back panel in place.

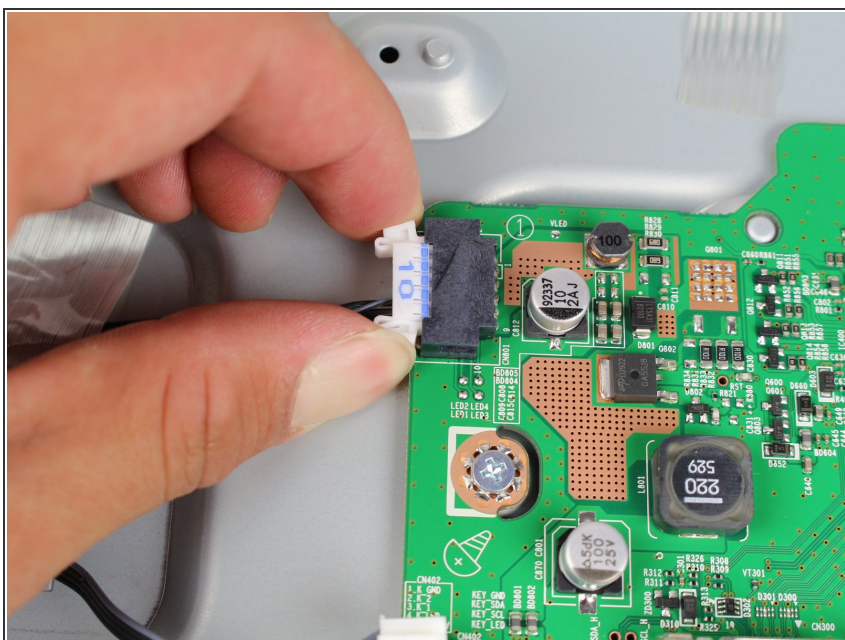


## Step 3 — Motherboard



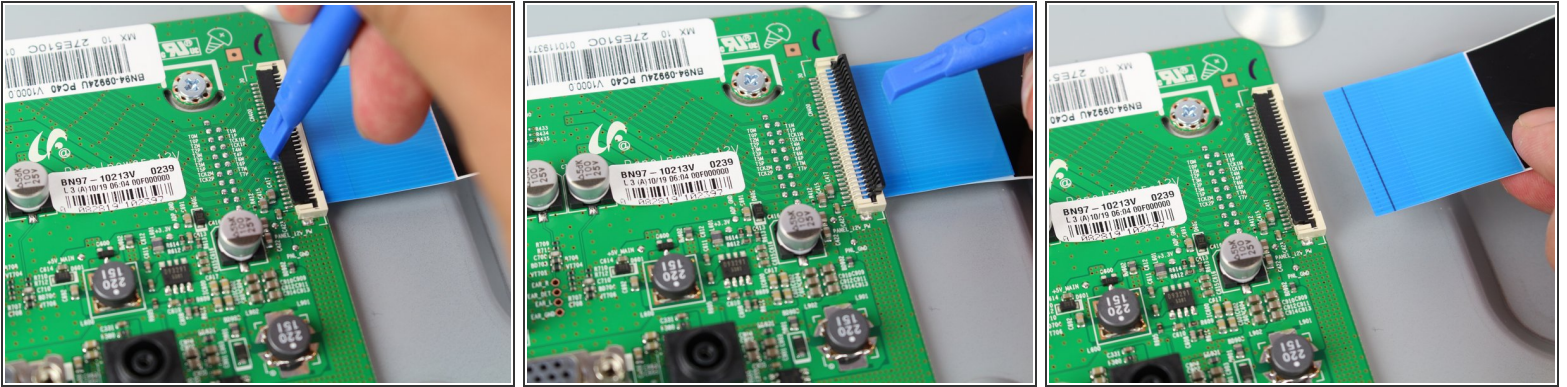
- Remove the navigation button connector by pulling while holding down its thumb tab.

## Step 4



- Remove the screen connector by gripping its sides and gently pulling while wiggling back and forth.

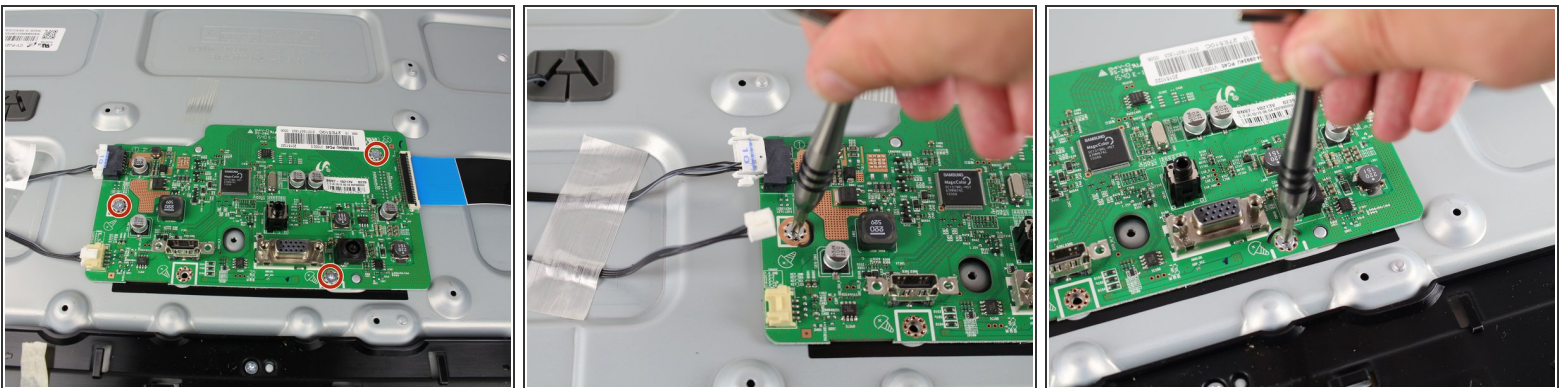
## Step 5



- For the ribbon cable, Lift the tab from the side facing the inside of the mother board with your fingernail or a spudger.
- Remove the cable by pulling while lifting slightly.

⚠ If the cable does not come out easily, than the secure tab may not be fully opened.

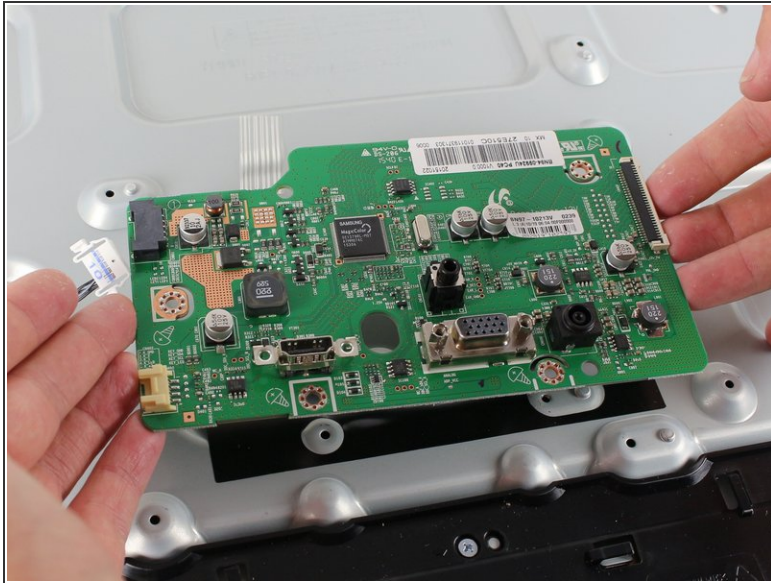
## Step 6



- Remove each of the 5mm length screws attaching the motherboard to the body of the monitor using a #1 Phillips head screwdriver.



## Step 7



- Using both hands, lift the board off of the monitor body by the motherboards base.

To reassemble your device, follow these instructions in reverse order.