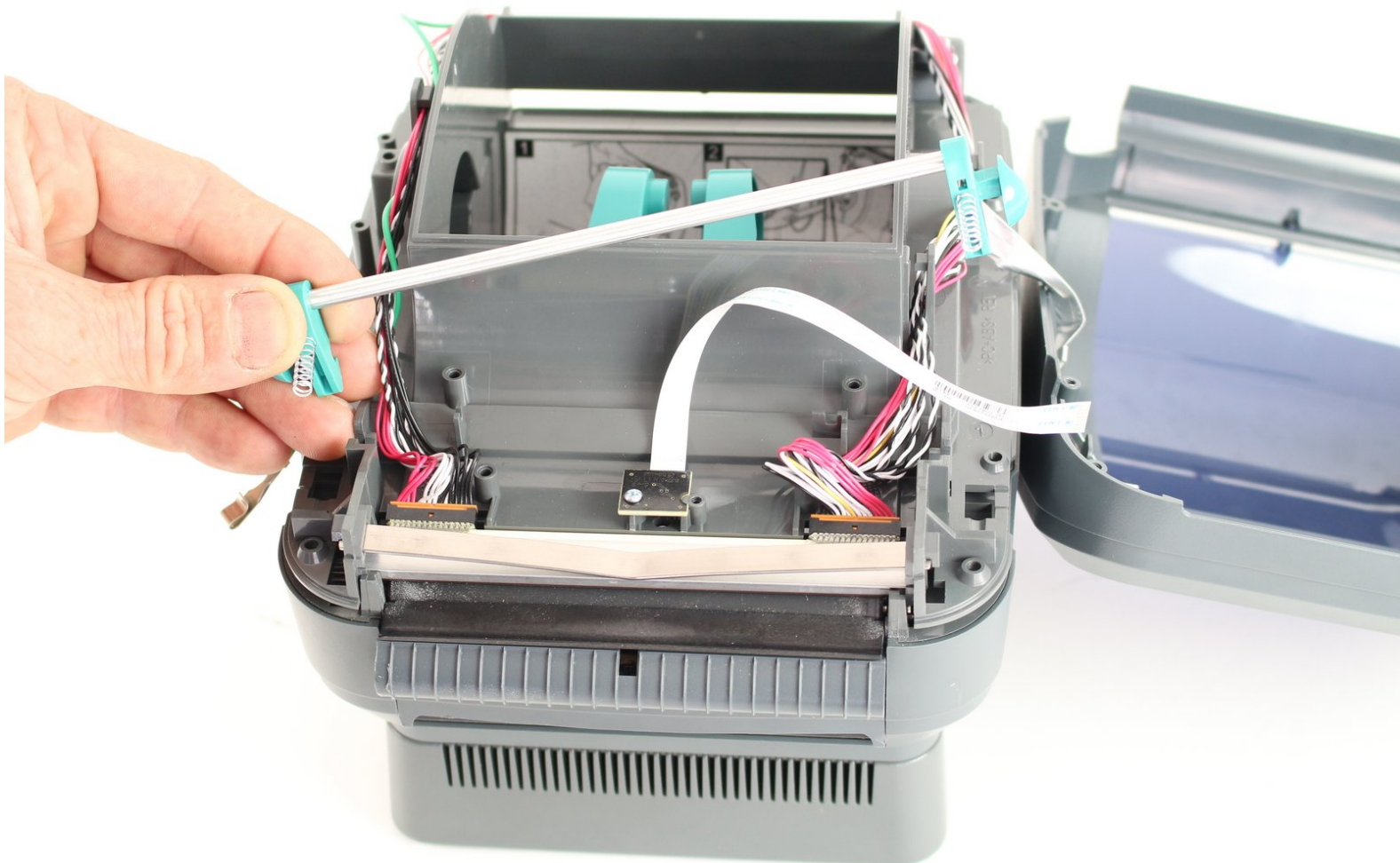




# Zebra ZP 505 Latch Hook Replacement

Use this guide to remove the latch hook on your ZP 505.

Written By: Sarah Raykhman



## INTRODUCTION

Use this guide to safely remove the latch hook from your ZP 505 with the help of a Phillips head screwdriver set.



### TOOLS:

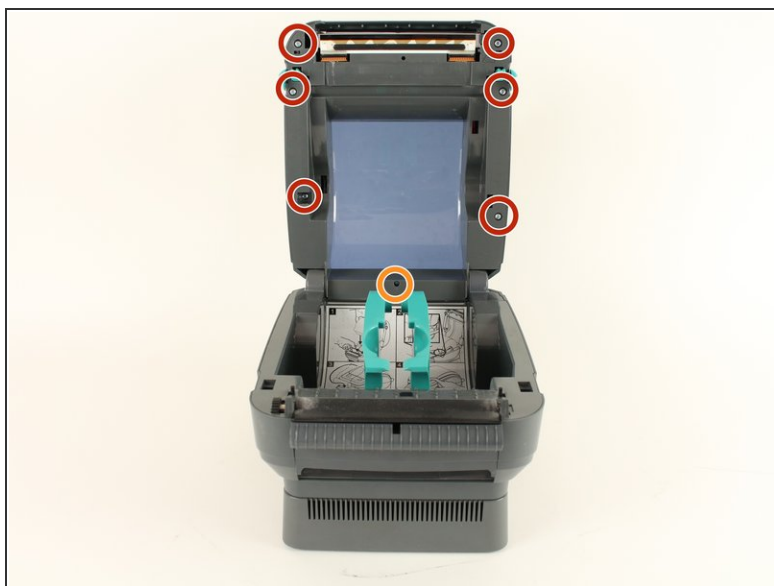
- [Phillips #1 Screwdriver](#) (1)
- [Phillips #0 Screwdriver](#) (1)
- [Spudger](#) (1)



### PARTS:

- [Zebra Latch Hook](#) (1)

## Step 1 — Latch Hook



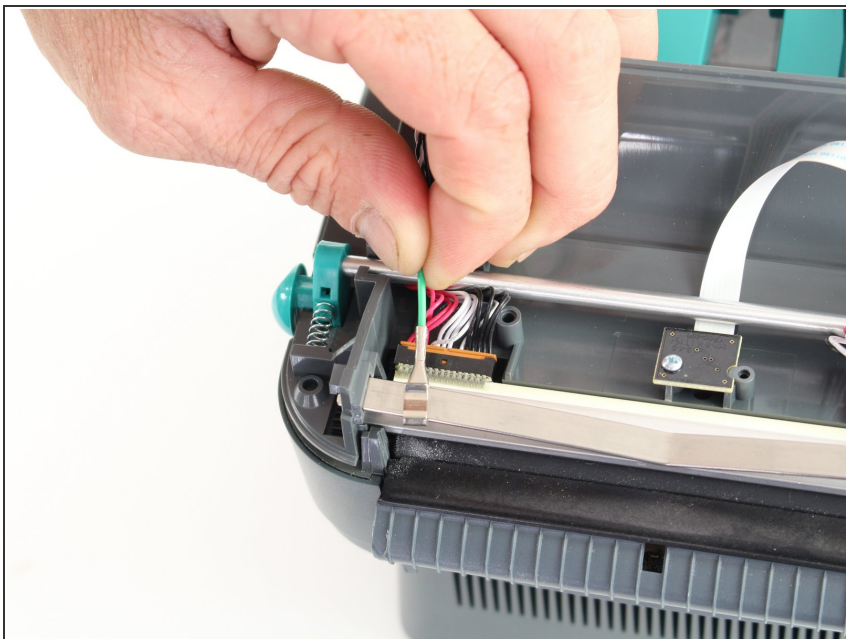
- Remove the following screws securing the top cover of the ZP 505.
  - Six P1 9.0mm
  - One P0 19.0mm

## Step 2



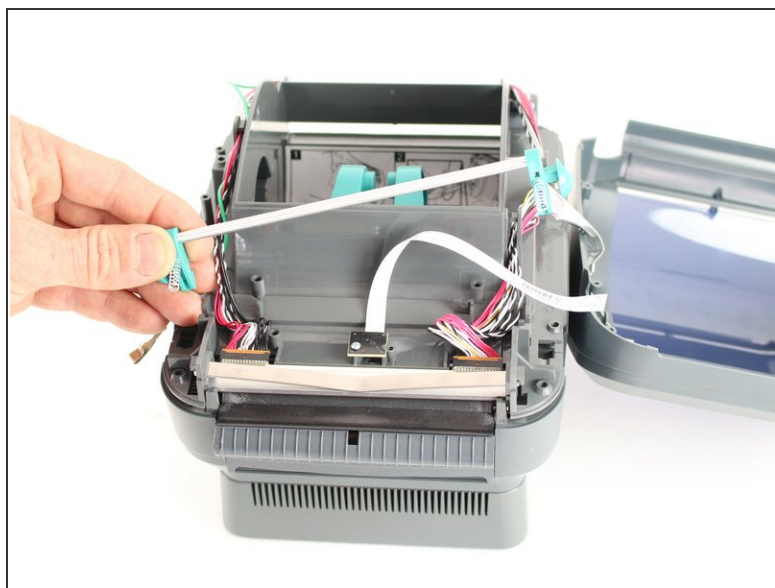
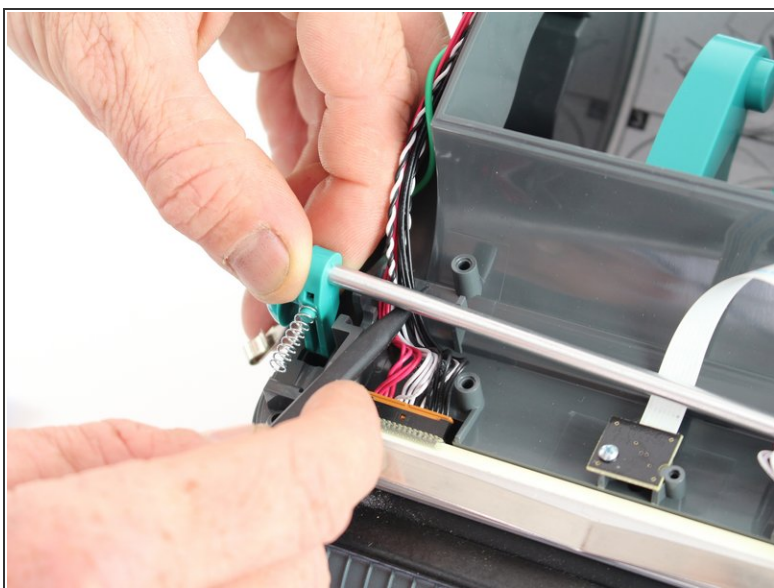
- Close the printer.
- Carefully remove the top cover and set it to the side.

### Step 3



- Locate the green wire on the front, left side of the printer and remove it.

### Step 4



- Pry out the tabs, making sure to hold the springs in place.
- Once the tabs are out, remove the latch hook.

To reassemble your device, follow these instructions in reverse order.