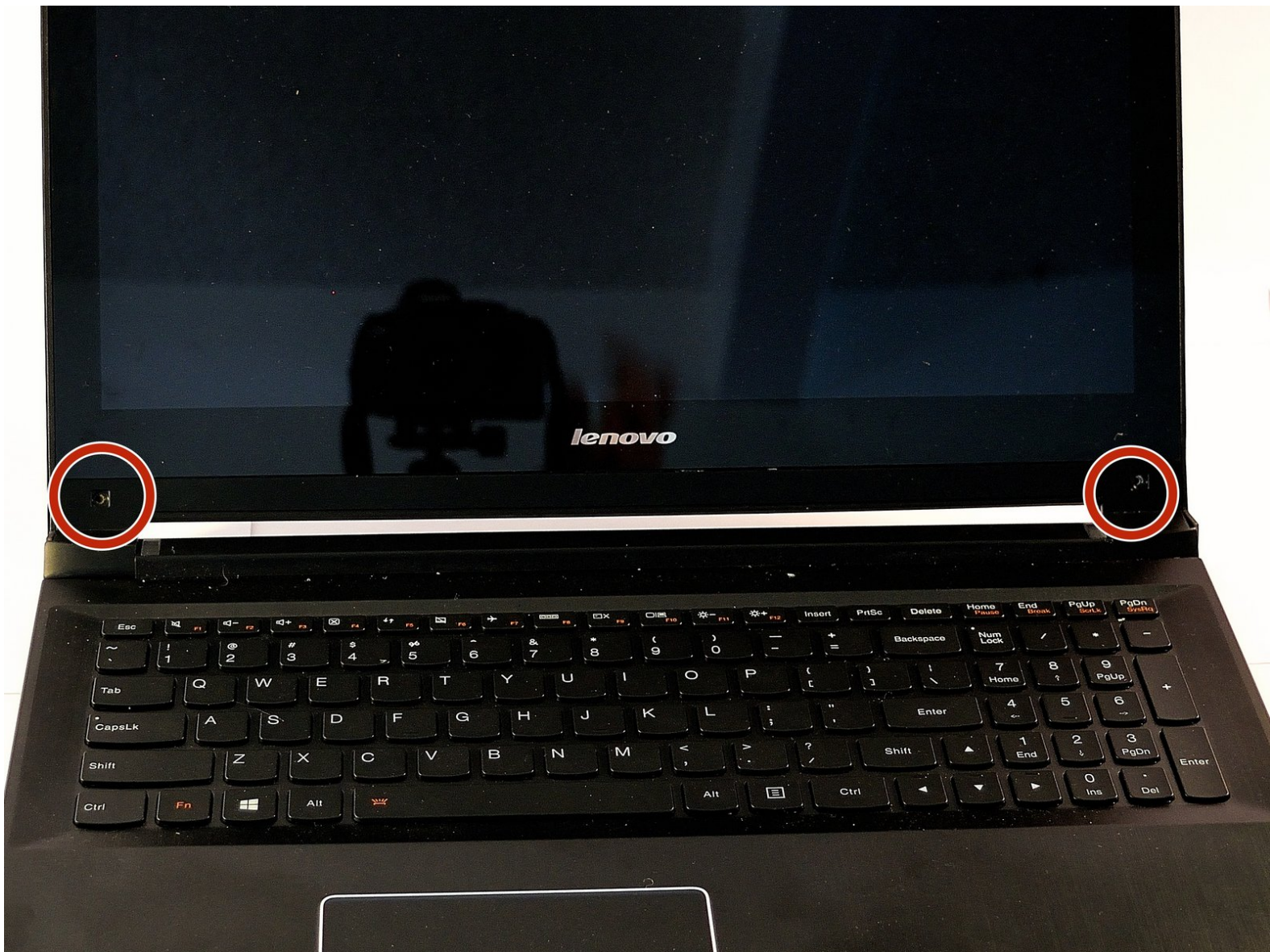




Lenovo Edge 15 LCD Screen Replacement

This guide will aid in the replacement of the LCD screen.

Written By: Gracie Harder



INTRODUCTION

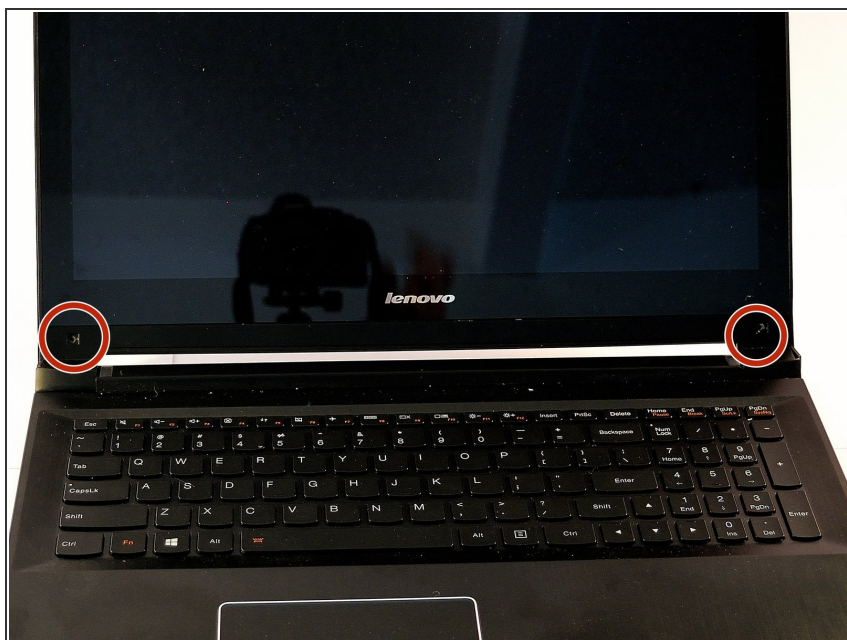
This guide will teach you to replace the LCD screen of your laptop computer.



TOOLS:

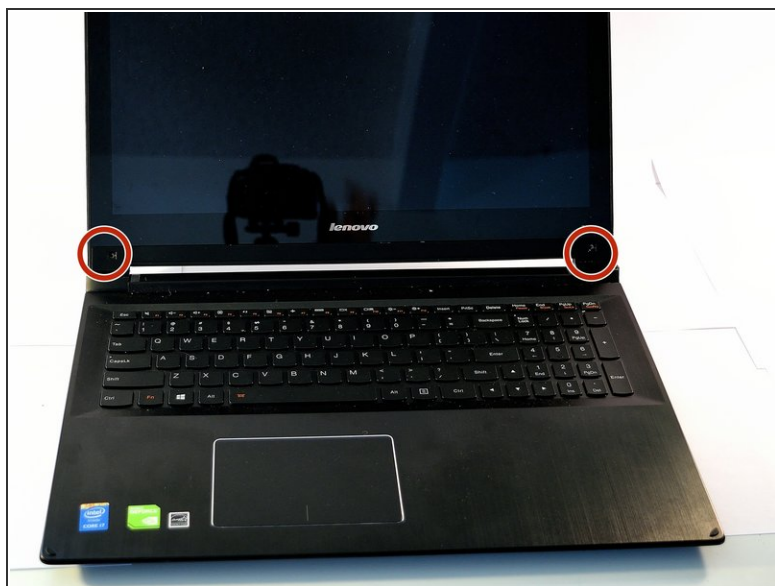
- [Phillips #1 Screwdriver](#) (1)
-

Step 1 — LCD Screen



- Remove the black plastic or rubber screw caps covering screws, located at the bottom of the screen

Step 2



- Remove the (2) M2.5 × 2.5 mm, Black Phillips Nylok coated screws with the Phillips #1 screwdriver, located on either side of the bottom of the screen.

Step 3



- Pry apart plastic cover at the bottom of the screen from plastic hinge cover.

Step 4



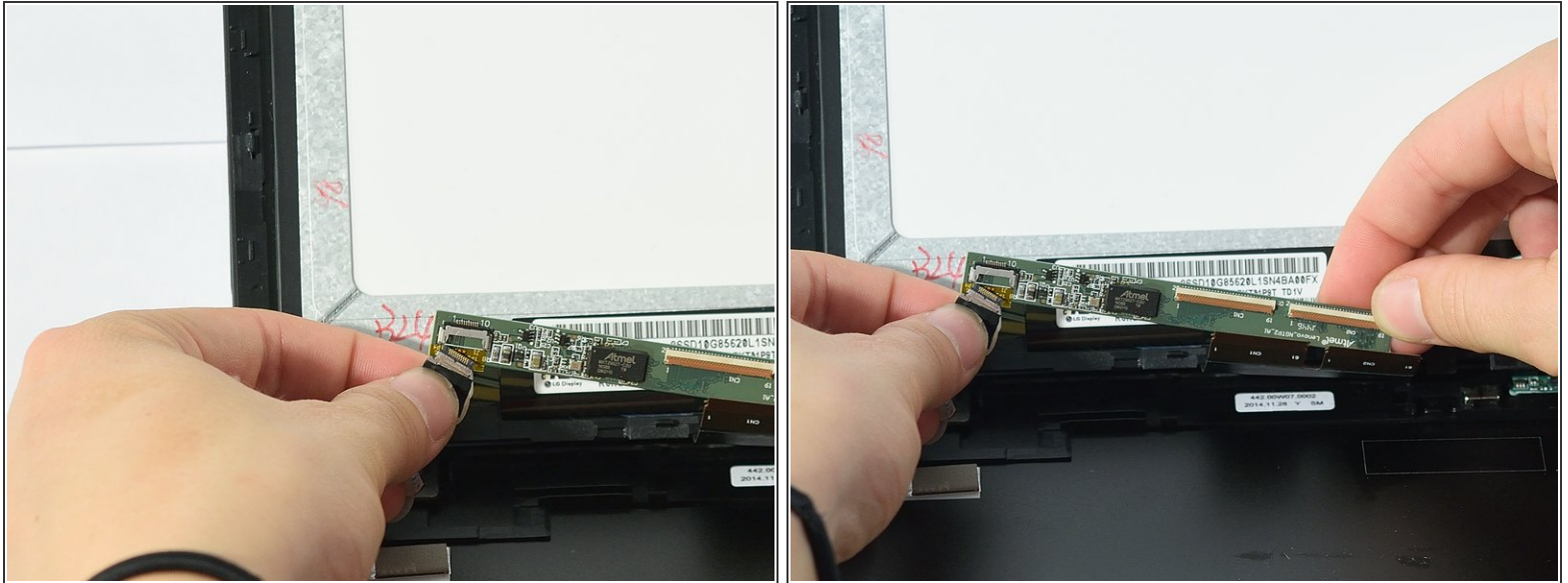
- Remove the (1) M2.5 x 2.5mm Black Phillips, Nylok coated screw located near the bottom center of the screen with the Phillips #1 screwdriver.

Step 5



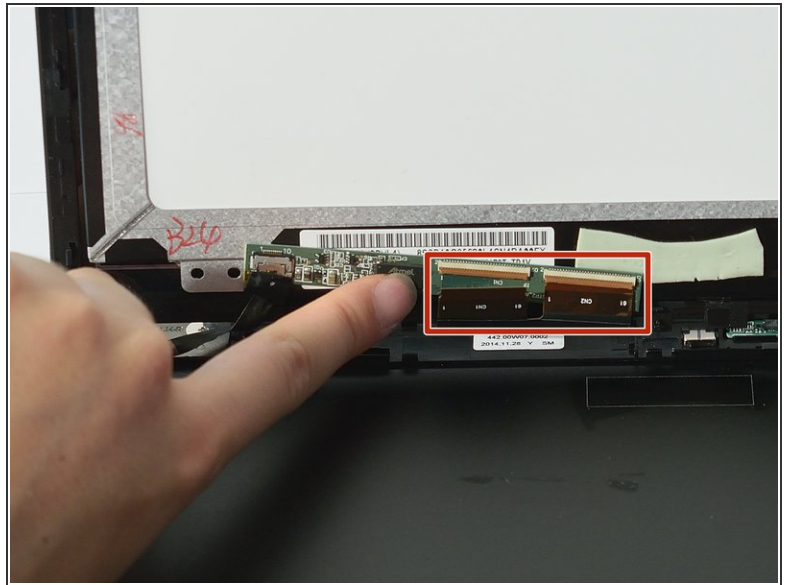
- Slide LCD screen around the edges while pulling upwards so that it pops off.
 - Turn the screen over so the touch board is visible, and start working from the back of the screen.
- ⚠ Ribbons will be connected in the back of the screen, so be careful not to pull too far that they rip out.

Step 6



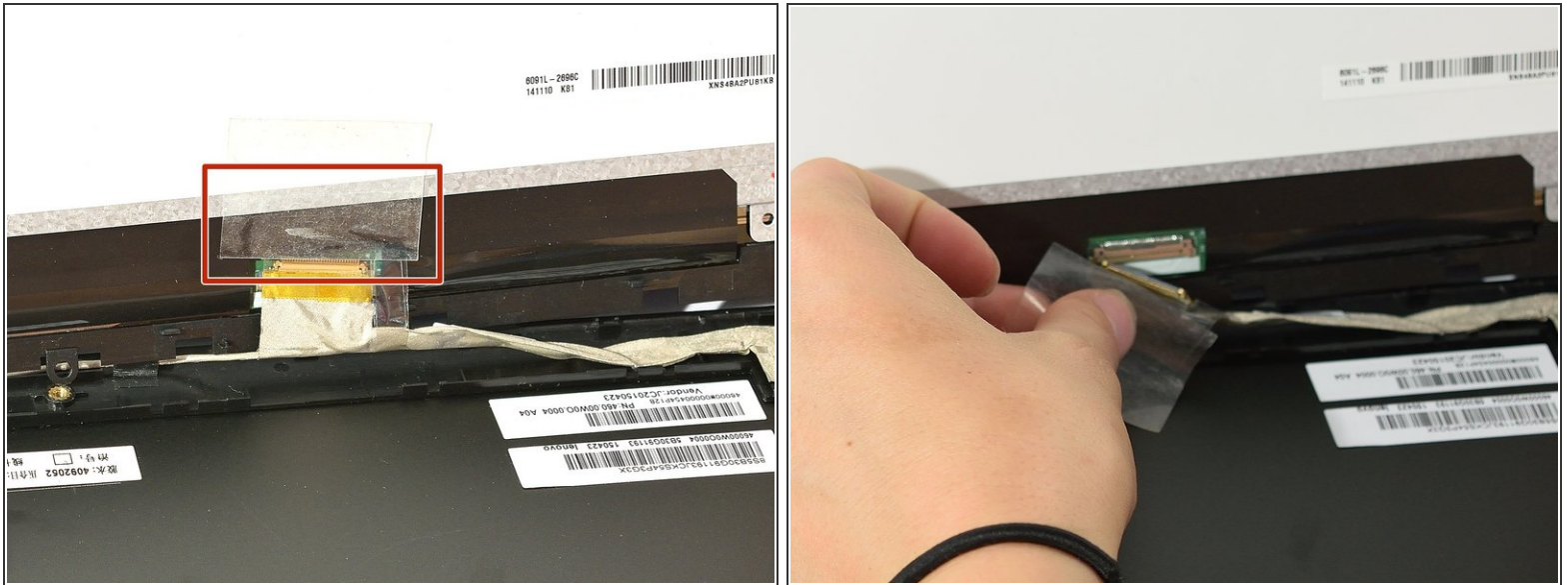
- Unplug the sensor from the sensor board near the bottom left of behind the screen.

Step 7



- Disconnect the two ribbons from connectors from the same board from the previous step, near the bottom left of the behind the screen.
 - The ribbon connectors unlatch by pulling up on the very small brown plastic bar near the end of the ribbon.
- ⚠ Be careful not to pull on the ribbons before unlatching. This may damage the connector and/or ribbons.

Step 8



- Remove the tape covering a ribbon connector near the bottom of the screen.
- Disconnect the ribbon by pulling back the small grey latch on the connector and gently pulling the ribbon away.

Step 9



- Remove LCD screen by gently pulling screen away from the rest of the laptop.
- ☑ Make sure all connections are secure when installing new screen. This eliminates the connection issue if screen is still not working properly after installation.

To reassemble your device, follow these instructions in reverse order.