



Lenovo Edge 15 Keyboard Key Replacement

This is a guide for replacing any keyboard key on the Lenovo Edge 15.

Written By: Cody Griffith



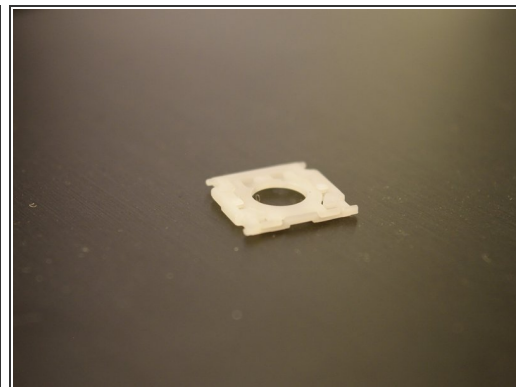
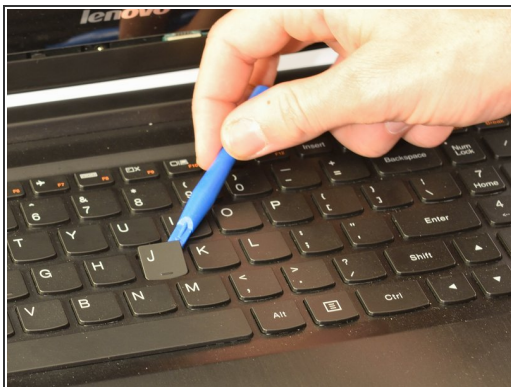
INTRODUCTION

This guide will give you a step-by-step process for replacing any keyboard key on the Lenovo Edge 15. The key on the keyboard may need to be replaced if any food or liquid is caught under the key.

TOOLS:

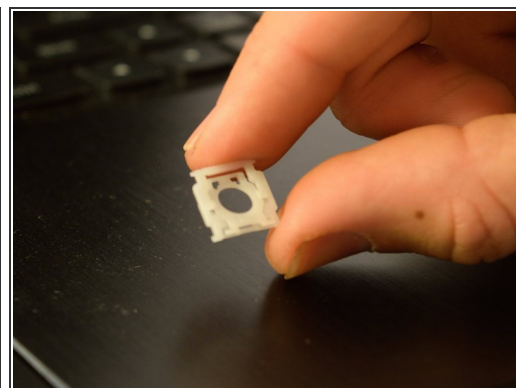
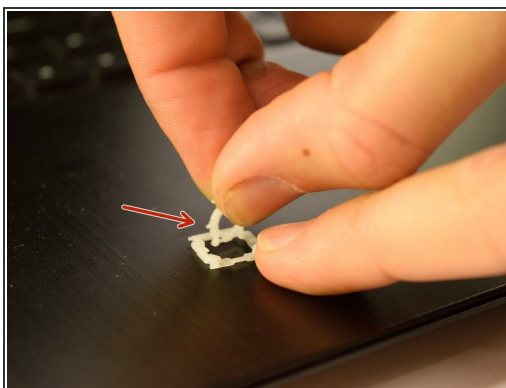
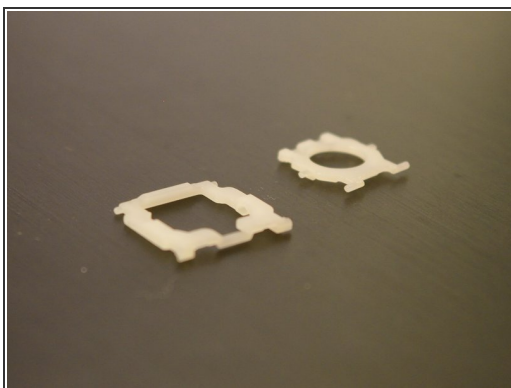
- [iFixit Opening Tools](#) (1)
-

Step 1 — Keyboard Key



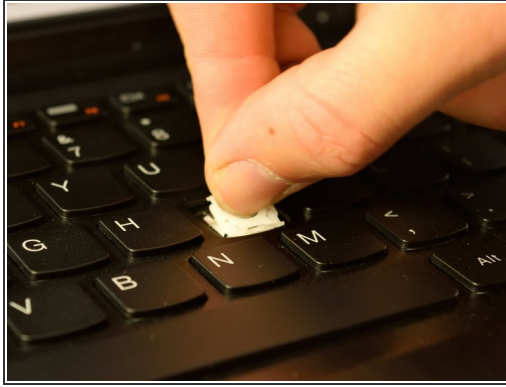
- Using the plastic opening tool, pry off the key.
- ⓘ Observe the metal hooks. The position of the metal hooks determines where the plastic keys reside.
- Pry off the plastic keyboard connector.

Step 2



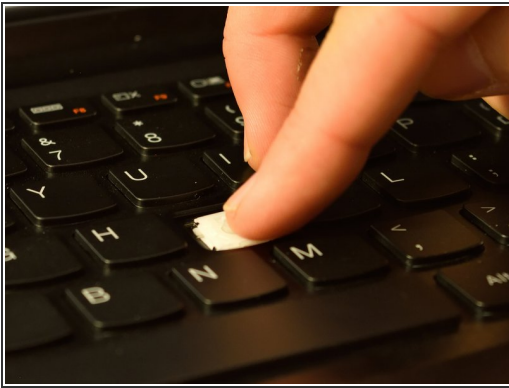
- Separate the plastic keys.
- ⓘ The smooth part of both plastic keys always faces away from the keyboard.

Step 3



- Locate the metal hooks where the plastic keys are held in.
- Insert the keys into the metal hook.
- ❗ You may need to use a plastic opening tool or thin object to stretch the keys into the metal hook.

Step 4



- Evenly push the plastic keys into the metal hooks.
- Evenly insert the key onto the plastic keys.
- ❗ Use minimal force when pushing down on the keys.
- ❗ Make sure the surface is free of any food, liquid, dust, etc.

Fin.