



HP Pavilion Wave 600-a014 Hard Drive Replacement

Guide on how to replace the internal hard drive for the HP Pavilion Wave 600

Written By: Cristian Vanegas



INTRODUCTION

This guide will walk you through the steps required to obtain access to the hard drive and how to remove and install a replacement drive. Before starting make sure to have a pry tool, and a Philips screw driver handy. Make sure the device is completely powered off and disconnected from any power sources. Additionally remove any devices connected to the computer.



TOOLS:

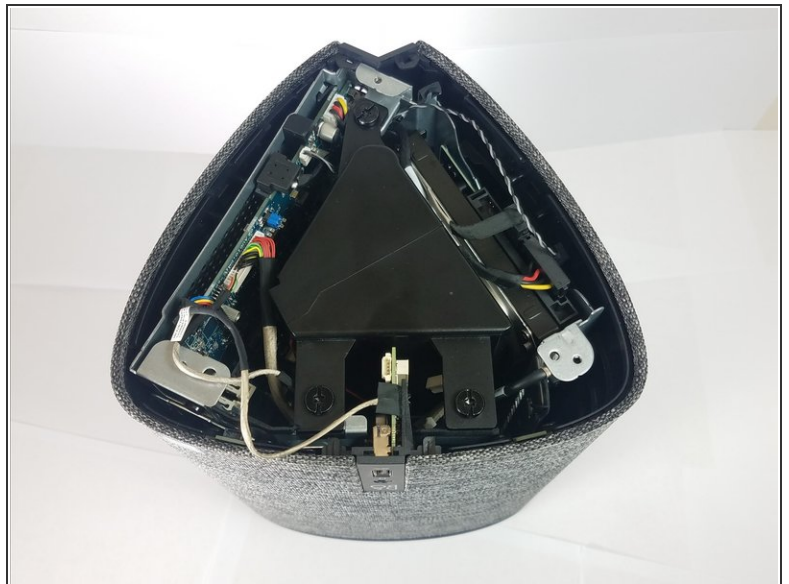
- [Phillips #0 Screwdriver](#) (1)
 - [iFixit Opening Tools](#) (1)
-

Step 1 — Hard Drive



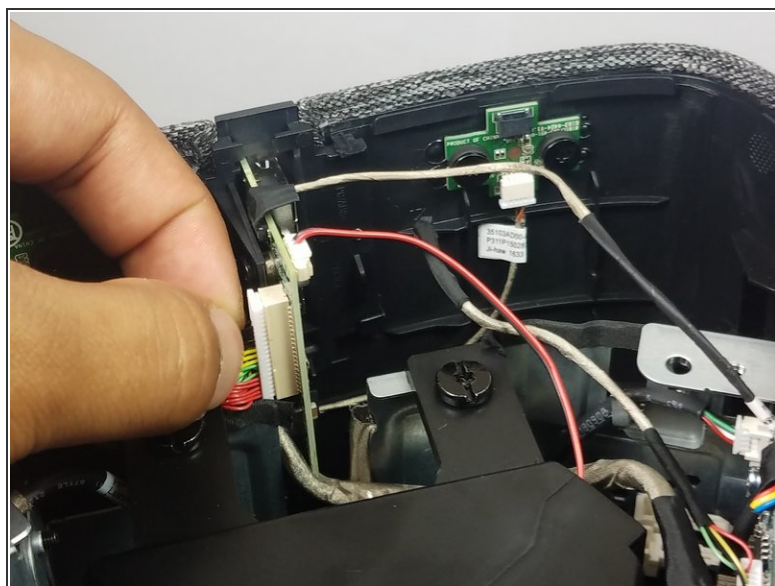
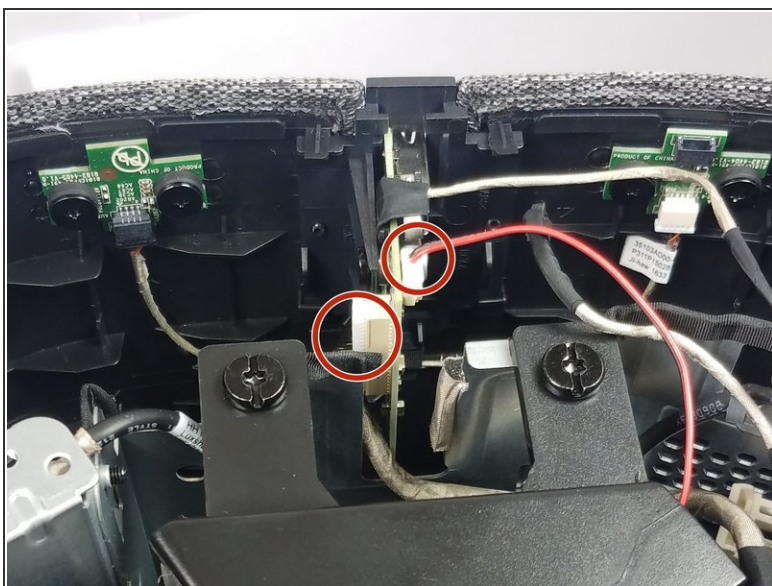
- Disconnect the PC from power source and any other devices.

Step 2



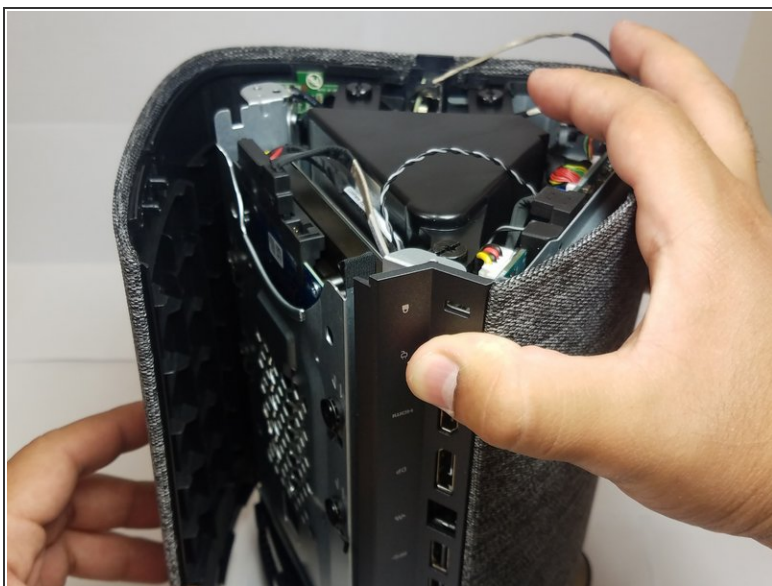
- Turn the computer over and remove the rubber feet.
- Remove the three 8mm Philips screws with a Philips #0 Screwdriver.
- Use a pry tool and lift up on the lid.

Step 3



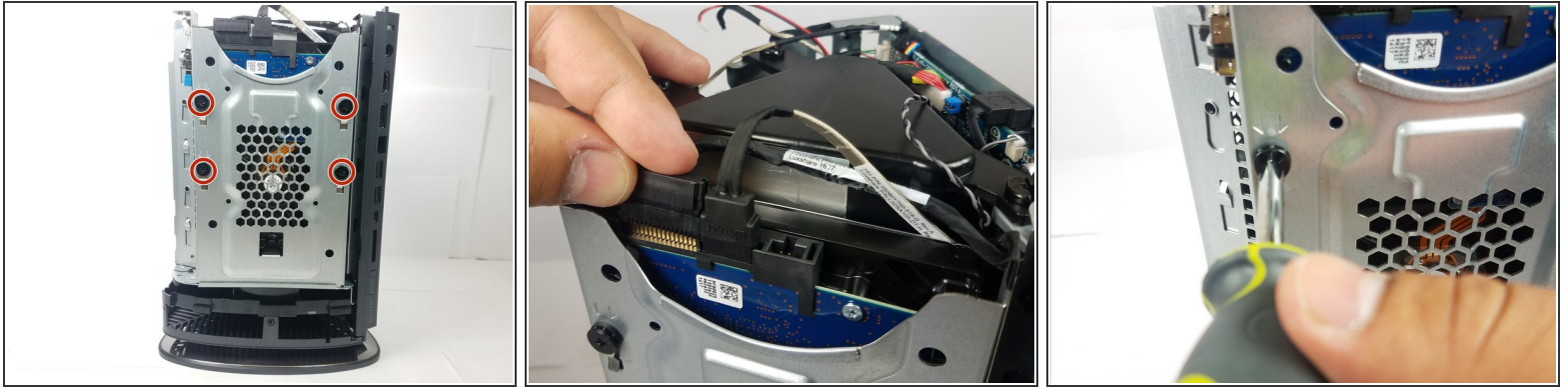
- Remove the two cables circled in red for the front IO panel.

Step 4



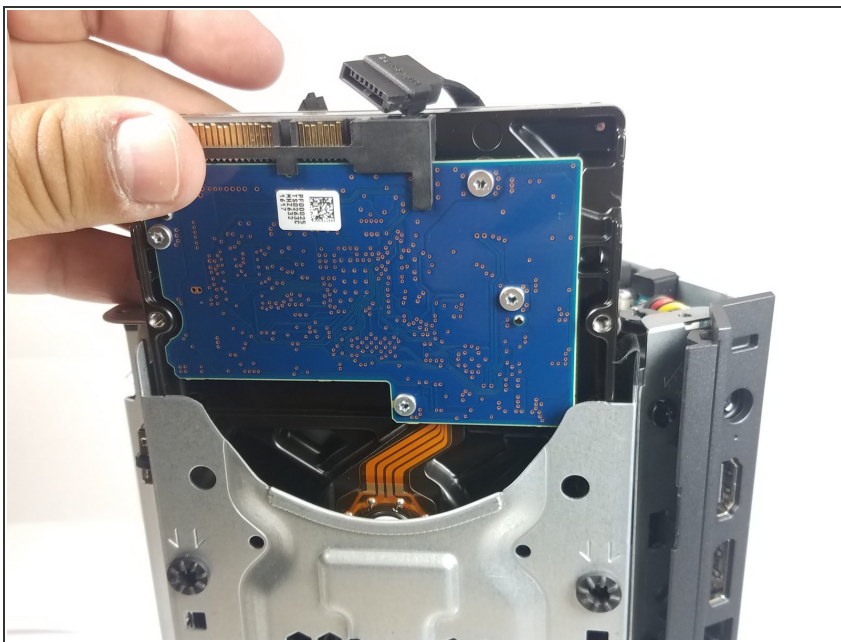
- From back IO panel pry open the casing as indicated.

Step 5



- To remove the hard drive, remove the four 8mm Philips screws using a Philips #0 Screwdriver.
- Remove Power and SATA cables from on top of the drive.

Step 6



- After screws have been removed grab the Hard Drive and pull it out of the dock.

To reassemble your device, follow these instructions in reverse order.