



# Ninja Ultima BL810 Power Plug Replacement

This guide will demonstrate how to disconnect the power plug.

Written By: Ryan James Gilroy



---

# INTRODUCTION

This guide will demonstrate how to disconnect the power plug.



## TOOLS:

- [Slip Joint Pliers](#) (1)
  - [Phillips #0 Screwdriver](#) (1)
  - [T10 Torx Screwdriver](#) (1)
  - [64 Bit Driver Kit](#) (1)
-

## Step 1 — Power Plug



- Unscrew the Phillips #0 11mm screws.
- Unscrew the Torx Security #10 11mm screw.

## Step 2



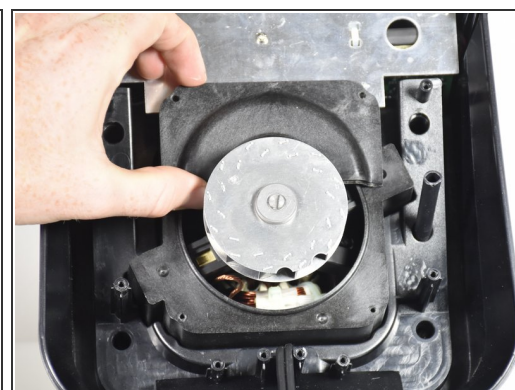
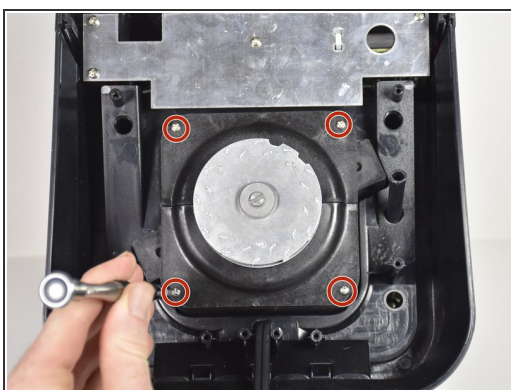
- Unscrew the six Phillips #2 11mm screws from the remainder of the bottom plate.
- Pull the bottom covering off of the blender.

### Step 3



- Unscrew the two Phillips #2 9mm screws.
- Remove the plastic block.

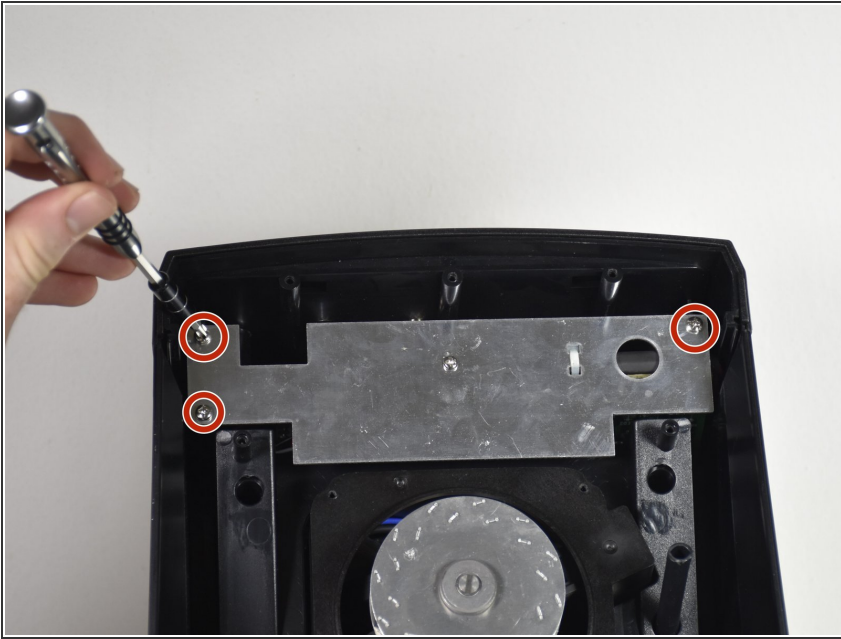
### Step 4



- Unscrew the four Phillips #2 11mm screws.
- Remove the plastic covers.
- ⓘ Removing the top cover and then rotating the bottom cover into the same orientation works best.

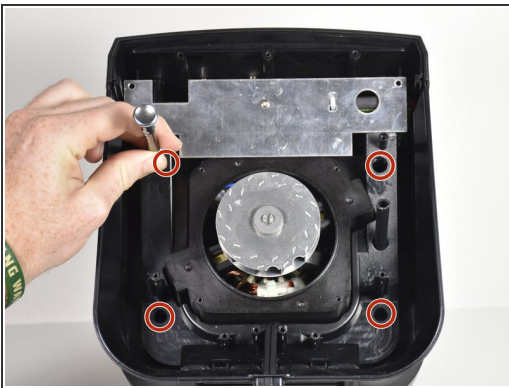


## Step 5



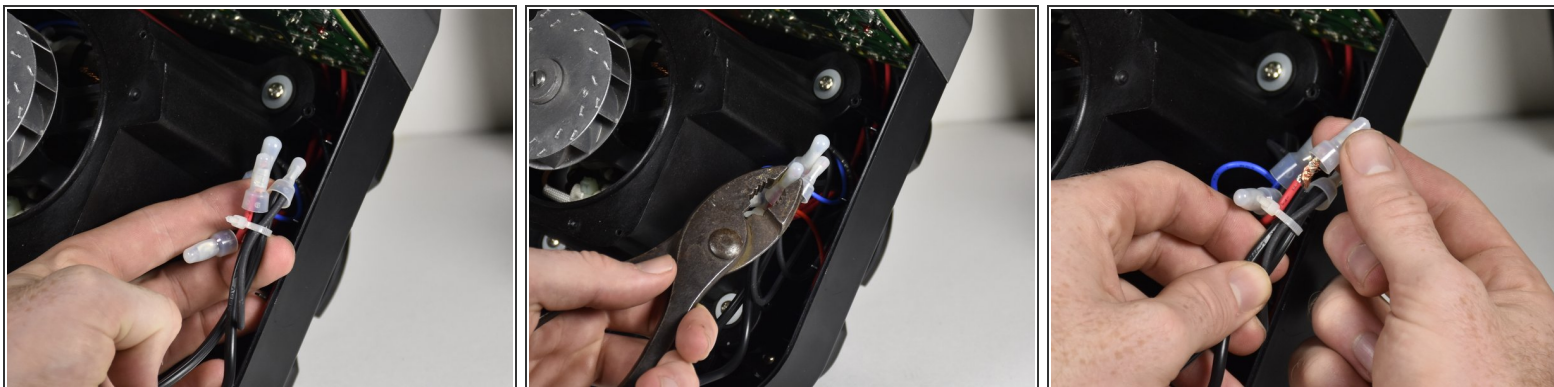
- Unscrew the three Phillips #2 9mm screws.
- ⓘ This metal plate doesn't need to be completely removed, just adjusted to the side to continue working.

## Step 6



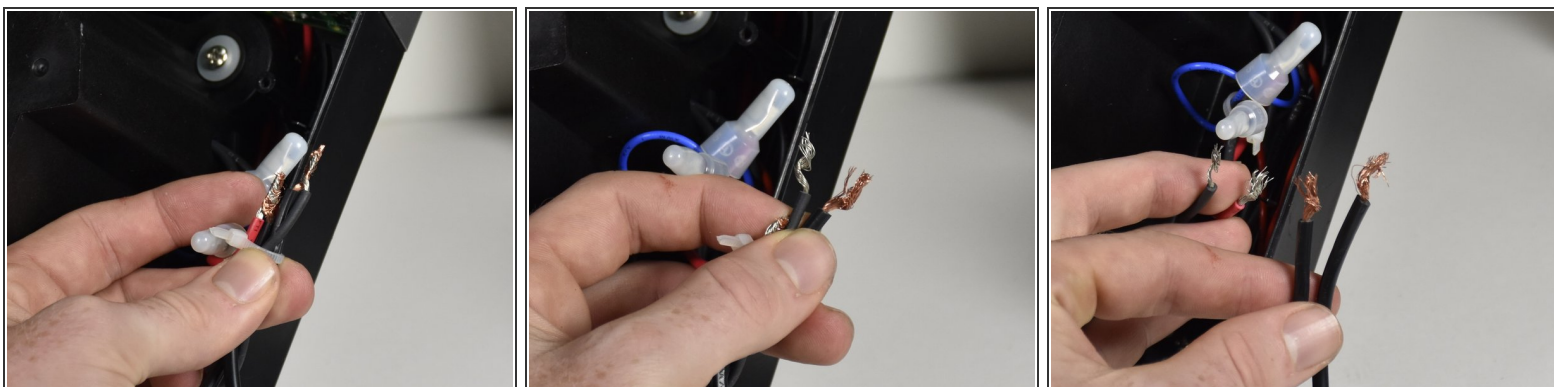
- Unscrew the four Phillips #2 11mm screws.
- Pull the power cord through as shown to create slack.
- Remove plastic casing by lifting upwards.

## Step 7



- Follow the power plug cords to find the right plastic caps.
- Squeeze the caps with pliers to loosen the grip.
- Pull the plastic caps off the twisted wires.

## Step 8



- Untwist the two wires from each other and pull the zip tie off.

To reassemble your device, follow these instructions in reverse order.