



HTC Vive Controller Trigger Replacement

How to replace the damaged trigger button in your HTC Vive Controller.

Written By: Christopher Amaro



INTRODUCTION

The HTC Vive controller trigger may be faulty and may not be detecting clicks from extended use. The motherboard has to be removed in order to access the trigger. This guide will show you how to replace the trigger.



TOOLS:

- [T5 Torx Screwdriver](#) (1)
- [Spudger](#) (1)
- [Phillips #00 Screwdriver](#) (1)



PARTS:

- [HTC Vive and Vive Pro Controller Trigger](#) (1)

Step 1 — Saucer Panels



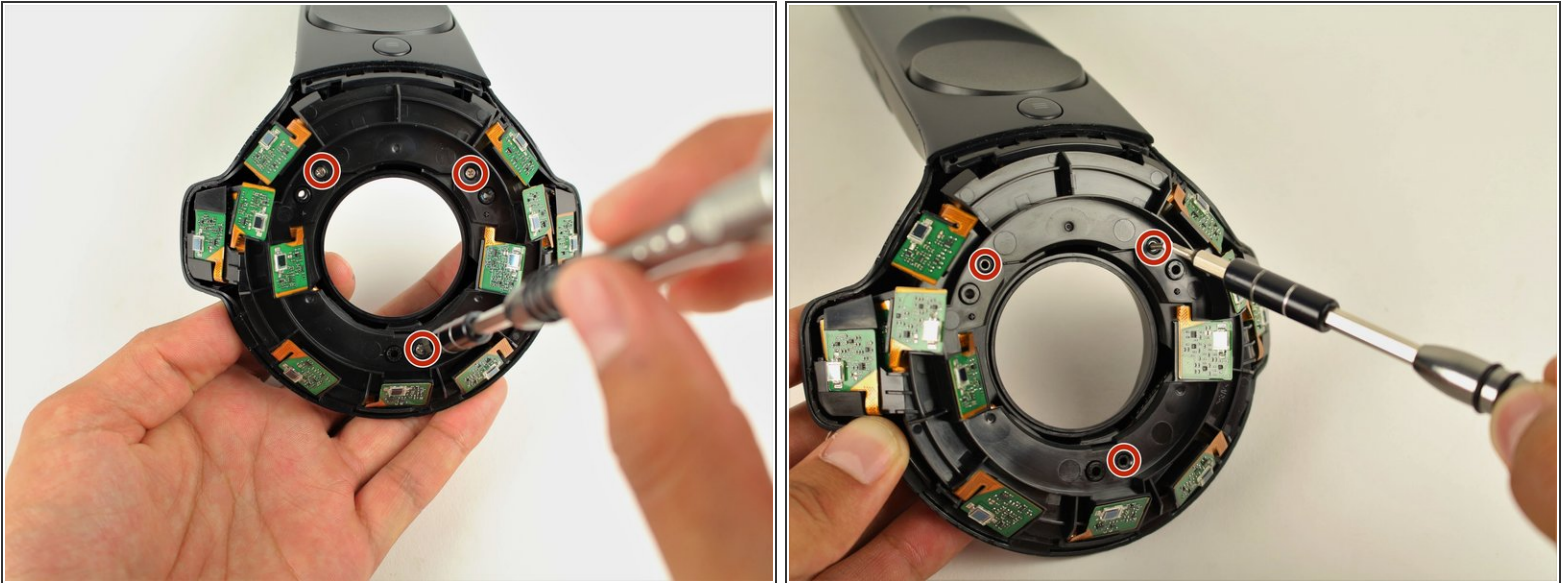
- Turn over the Vive controller so that the bottom saucer is facing up.
- Use the T5 Torx screwdriver to remove three black 21mm screws from the bottom saucer.

Step 2



- Use the nylon spudger to separate the top and bottom saucer covers all around the edges.
- Remove only the top saucer cover by pulling up with your hand.

Step 3



- Use the Phillips 00 screwdriver to remove the three silver 12.8mm screws from the exposed upper sensor panel.

Step 4



- Carefully pull away the bottom saucer cover with your hand.
- ⓘ To aid in removing the saucer cover, squeeze the base of the controller with your other hand, as shown in the second image of this step. Squeezing will make the clips easier to release and help prevent them from breaking.

Step 5 — Front Panel



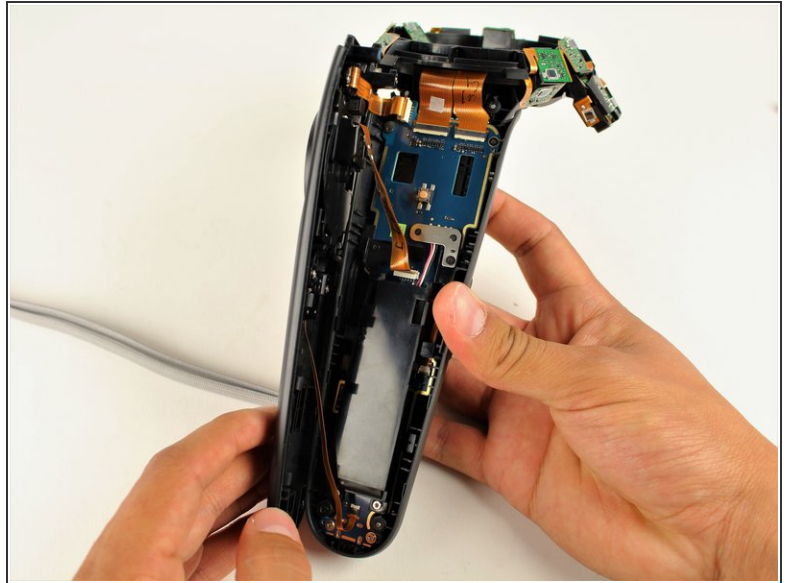
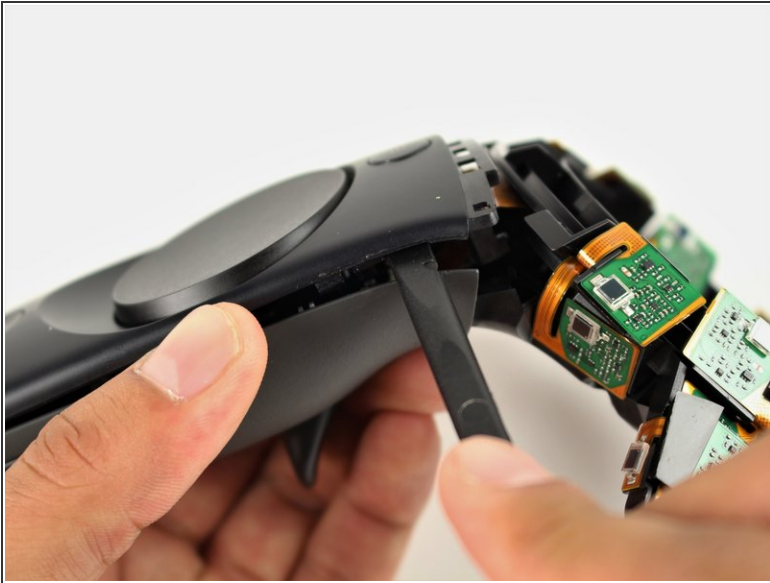
- Use the T5 Torx screwdriver to remove the two black 5.2mm screws on the back gray panel.

Step 6



- Turn over the Vive controller so that the exposed bottom saucer panel is facing up.
- Use the T5 Torx screwdriver to remove the three black 5.2mm screws.

Step 7

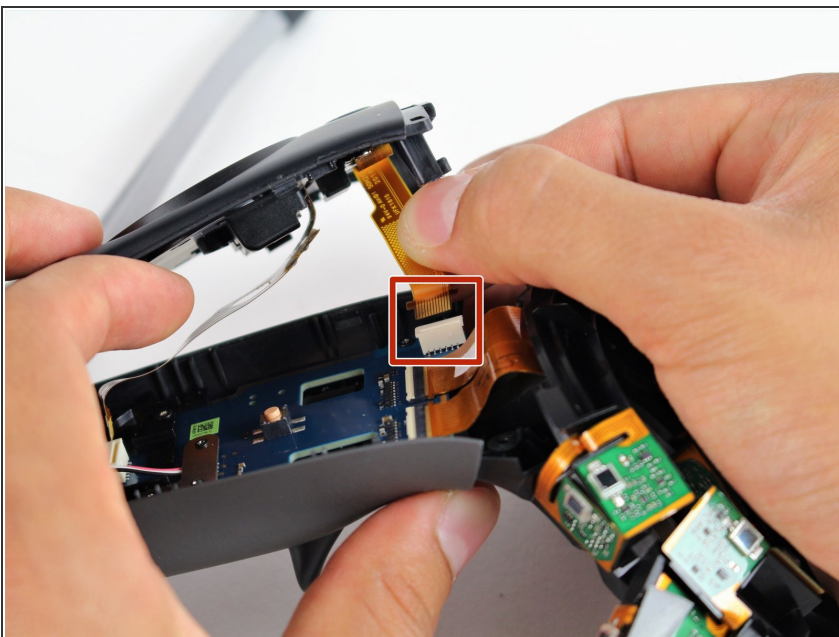


- Use the nylon spudger to separate the front panel gently by running the spudger around the edges of the handle.

⚠ Only separate the front panel around the edges. Do not try to completely remove the panel yet.

- Gently lift the right side of the panel to the left.

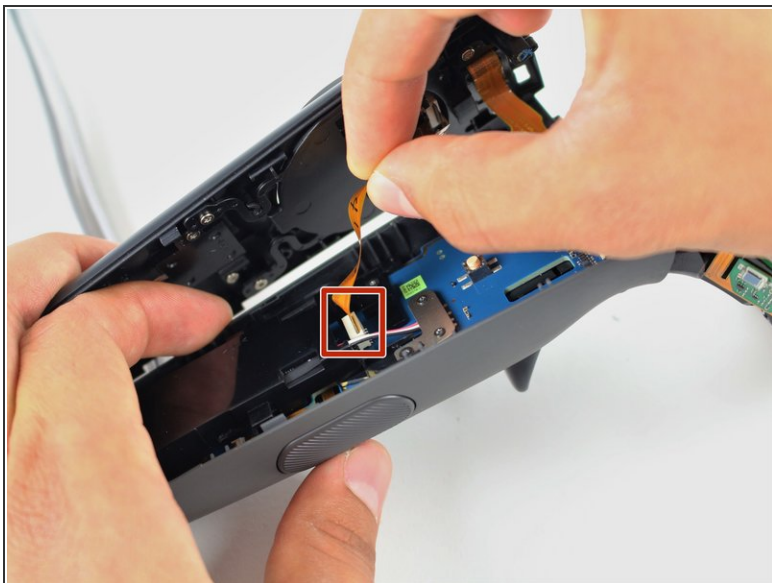
Step 8



- Disconnect the upper ribbon cable gently by pulling the ribbon up and away from the motherboard with two fingers.

⚠ Do not try to disconnect the ribbon cables from the front panel.

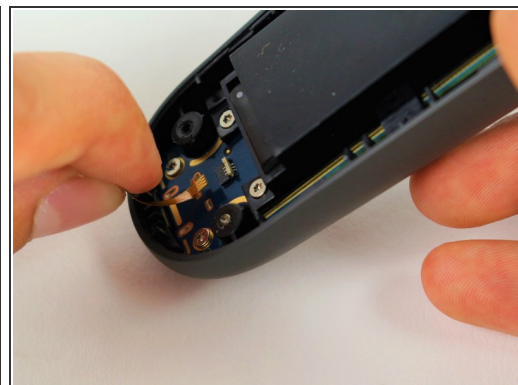
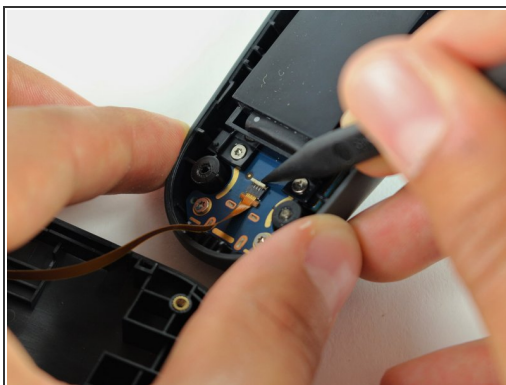
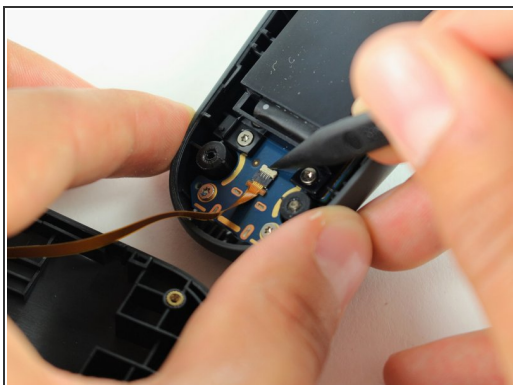
Step 9



- Disconnect the middle ribbon cable gently by pulling the ribbon cable up and away from the motherboard with two fingers.

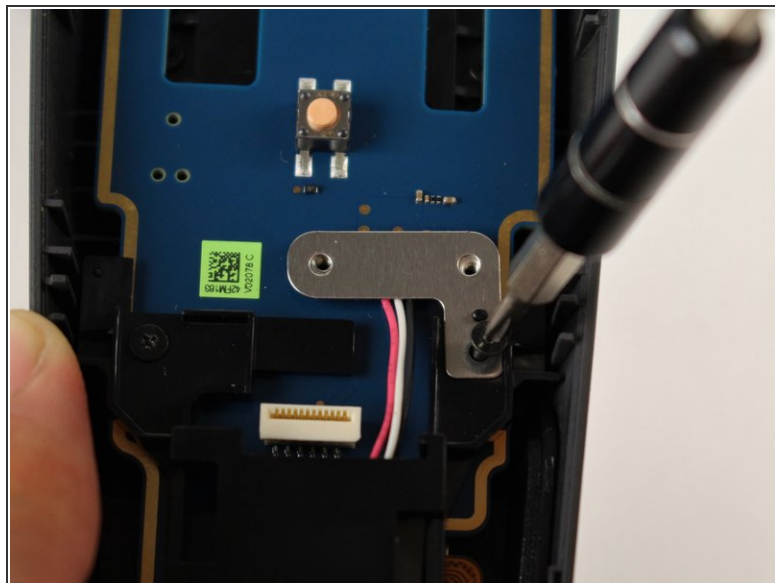
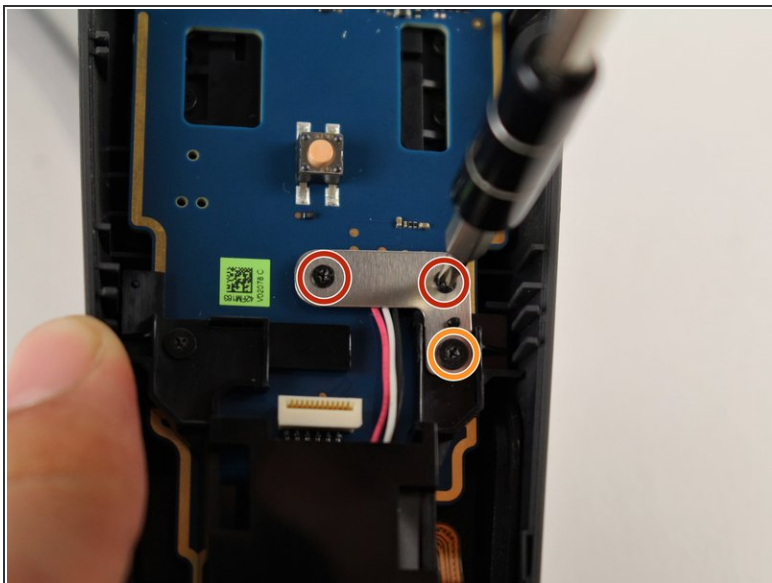
⚠ Do not try to disconnect the ribbon cables from the front panel.

Step 10



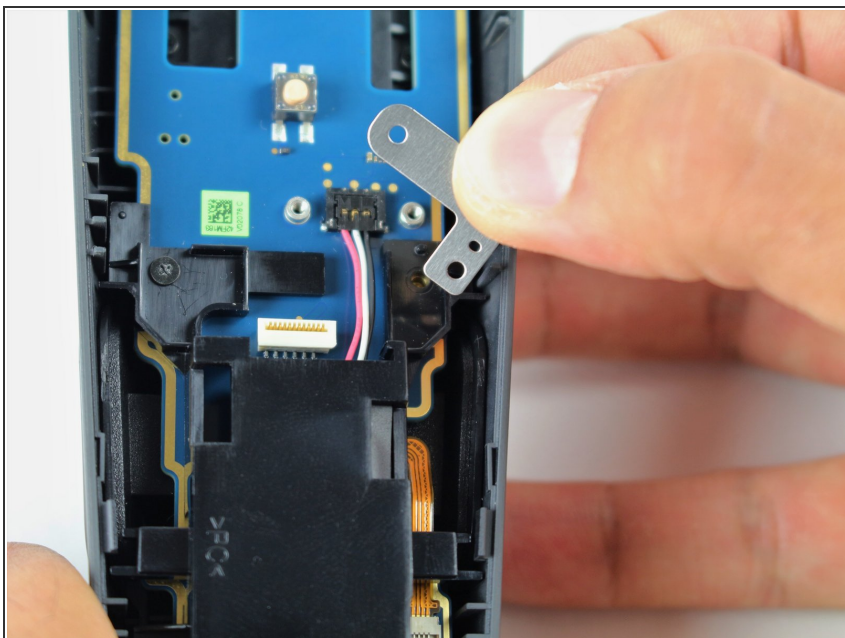
- Use the nylon spudger to lift the white tab by 90 degrees.
- Disconnect the bottom ribbon cable gently by pulling the ribbon cable down with two fingers.

Step 11 — Battery



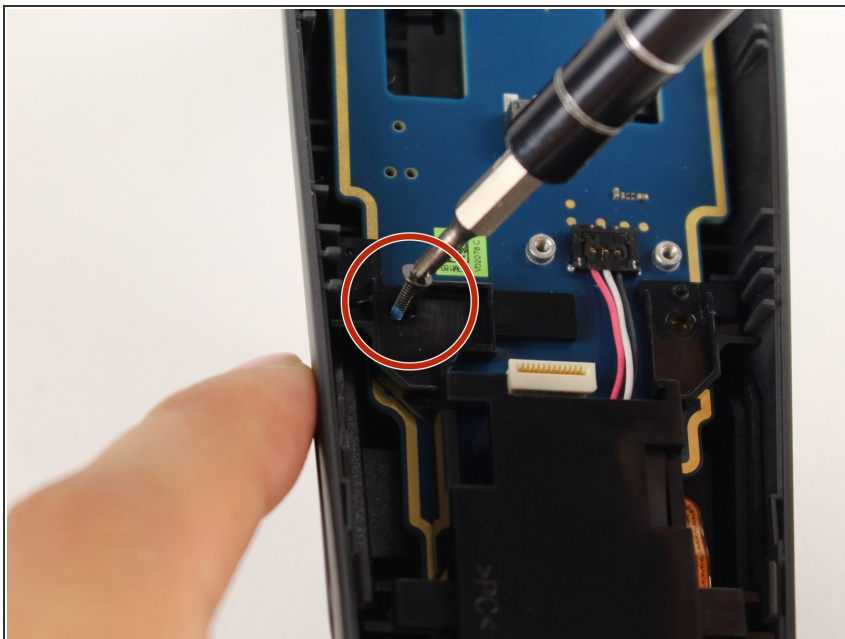
- Use the Phillips 00 screwdriver to remove two black 2.8mm screws from the silver plate.
- Use the Phillips 00 screwdriver to remove the black 5.8mm screw from the bottom right corner of the silver plate.

Step 12



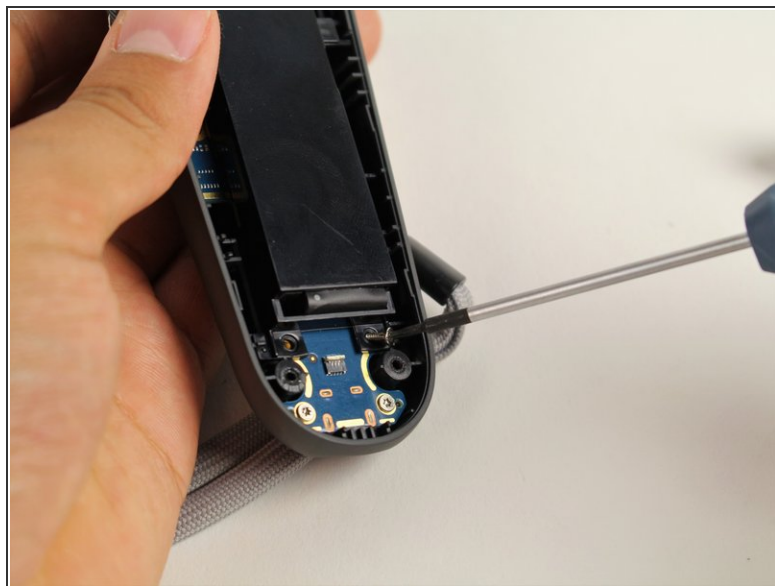
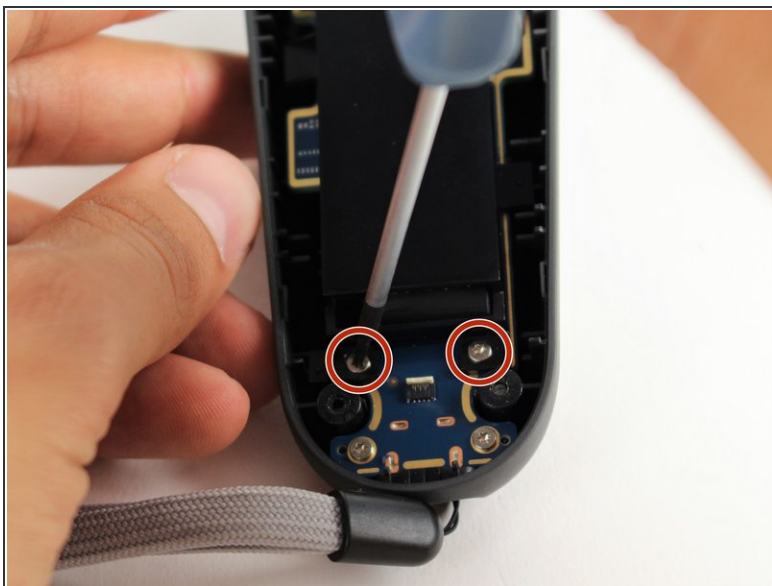
- Remove the silver plate by pinching it with two fingers and lifting up.

Step 13



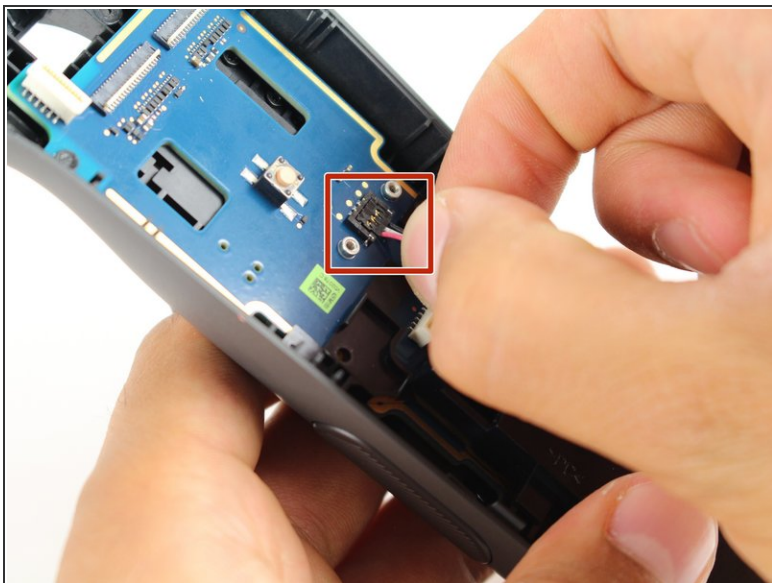
- Use the Phillips 00 screwdriver to remove the black 5.8mm screw from the top left of the battery frame.

Step 14



- Use the T5 Torx screwdriver to remove the two silver 4.2mm screws from the bottom of the battery frame.

Step 15



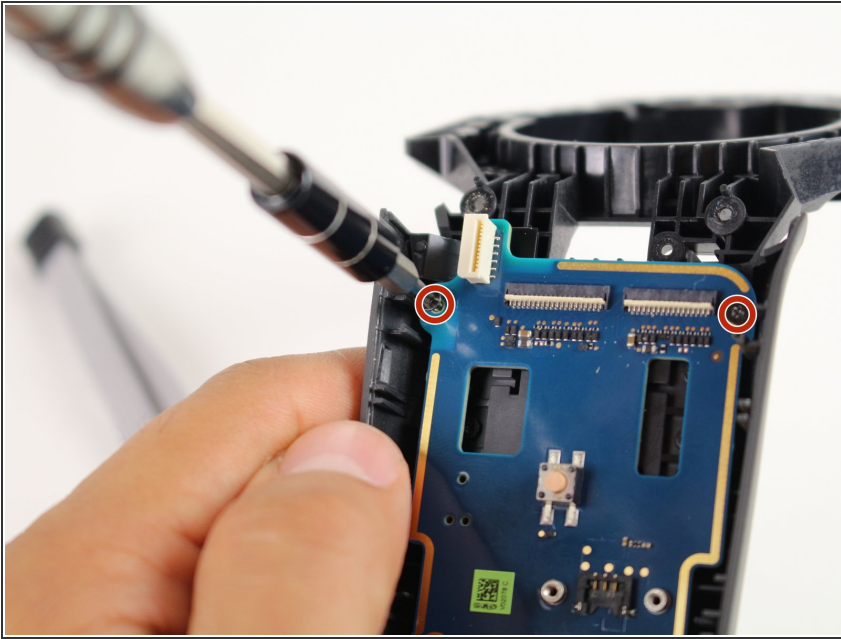
- Disconnect the three-pin cable gently by pinching the cable with two fingers and pulling up.

Step 16



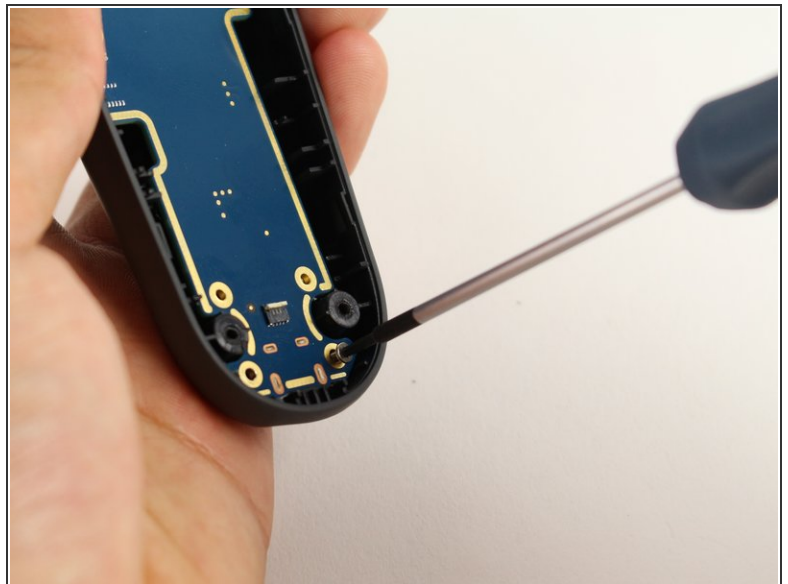
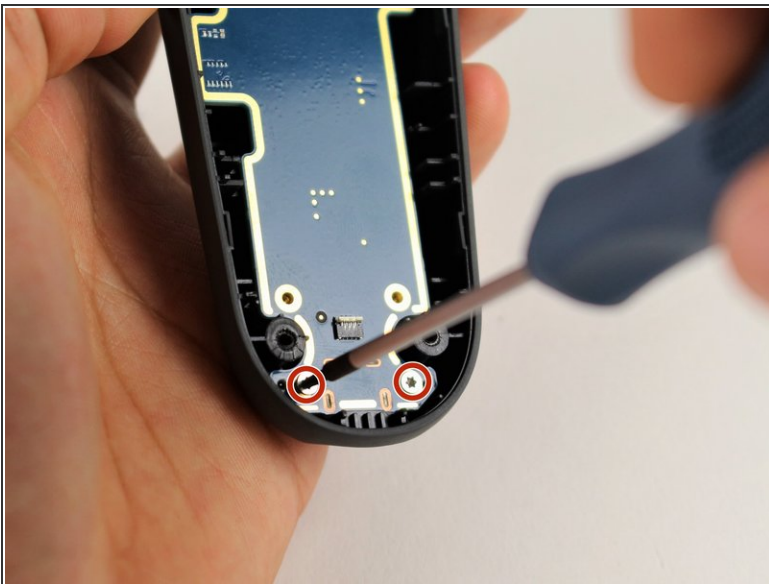
- Lift the battery frame to remove the battery from the Vive controller

Step 17 — Motherboard



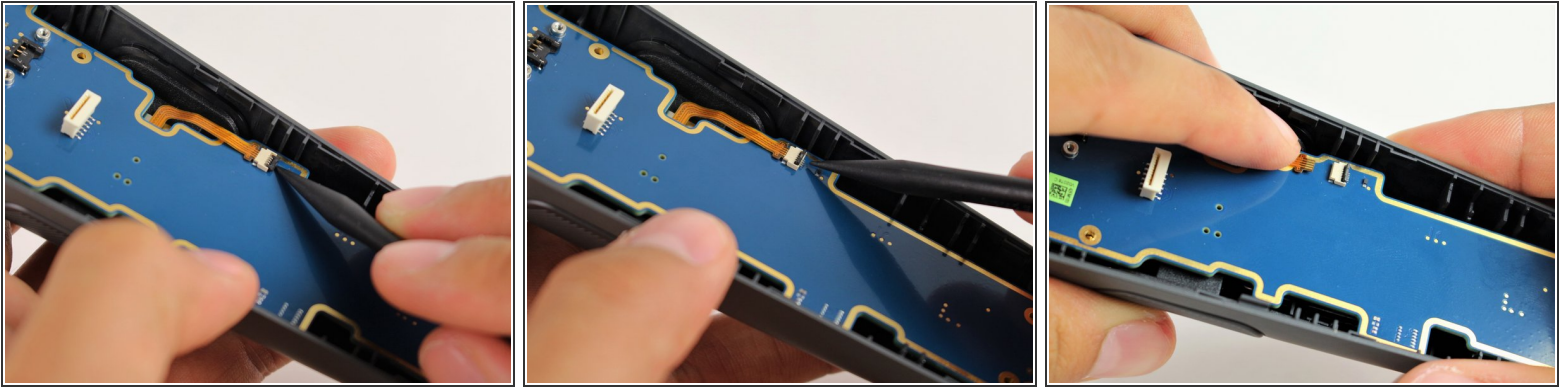
- Use the Phillips 00 screwdriver to remove the two black 5.8mm screws from the top of the motherboard.

Step 18



- Use the T5 Torx screwdriver to remove the two silver 4.2mm screws from the bottom of the motherboard.

Step 19



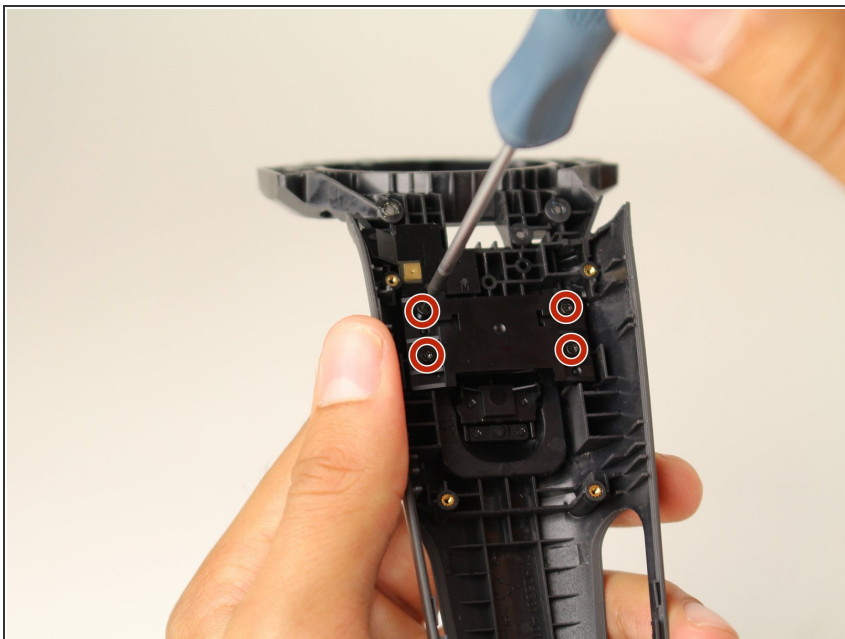
- Use the nylon spudger to rotate the black tab up by 90 degrees.
- Disconnect the ribbon cable carefully with your finger.

Step 20



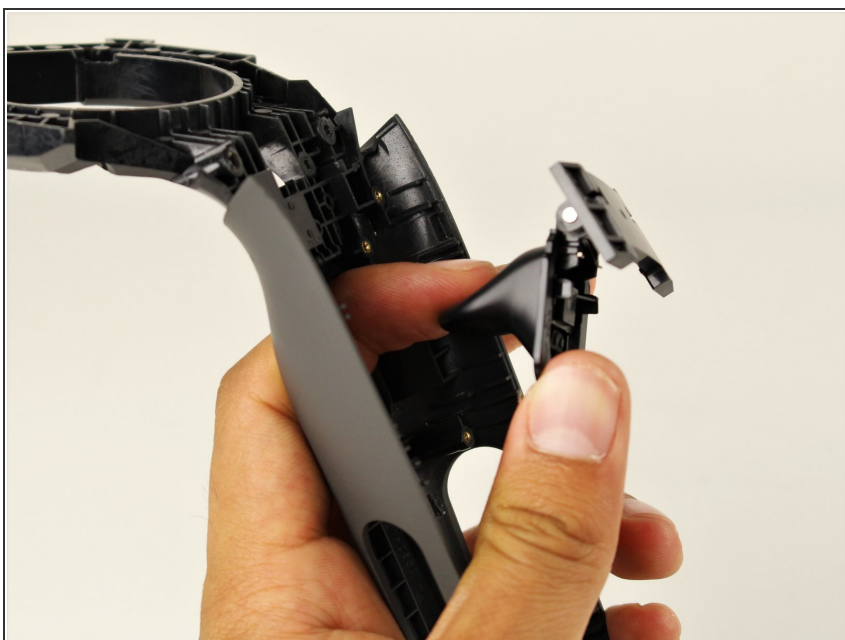
- Lift the motherboard up and out of the Vive controller using your hands.

Step 21 — Trigger



- Use the T5 Torx screwdriver to remove the four black 5.2mm screws from the inner part of the trigger.

Step 22



- Push the trigger button in with your finger until it pops out of the front panel.

To reassemble your device, follow these instructions in reverse order.