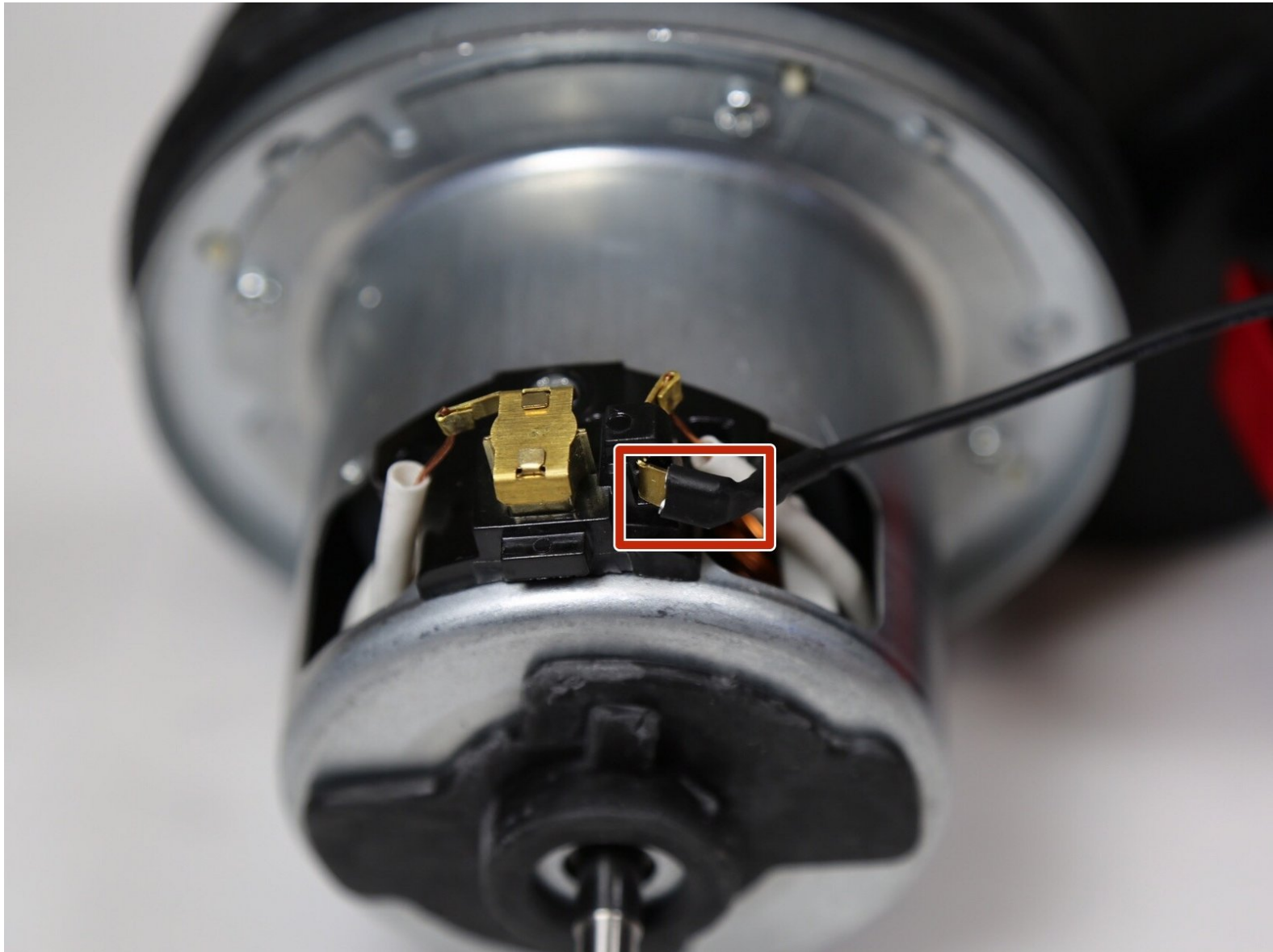




Eureka SuctionSeal 2.0 Pet Thermal Fuse Replacement

How to replace the Eureka SuctionSeal 2.0 Pet thermal fuse.

Written By: Grayson Clendenon



INTRODUCTION

This guide walks you through removing the Eureka SuctionSeal 2.0 Pet vacuum's thermal fuse. You may find this guide useful if your vacuum isn't starting and you have already tried resetting the thermal fuse. This guide requires physical strength to complete and is more technical than other removals related to this device. It is recommended that owners attempt to resolve issues through the [troubleshooting page](#) before using this guide.



TOOLS:

- [JIS #1](#) (1)
 - [Metal Spudger](#) (1)
 - [3mm Hex Key \(or Bit\)](#) (1)
 - [iFixit Opening Tools](#) (1)
-

Step 1 — Dust Cup



- Place the device upright with the brush roller closest to you.
- Pull up on the latch at the top of the dust cup.
- Tilt the top of the dust cup forward and pull towards yourself, removing the container from the device.

Step 2 — Brush Roll Cover



- Locate the gray exhaust filter cover at the top of the vacuum's base.
- Grip the two tabs in the middle of the filter cover and rotate counter-clockwise.
- Lift the cover away from the vacuum.

Step 3



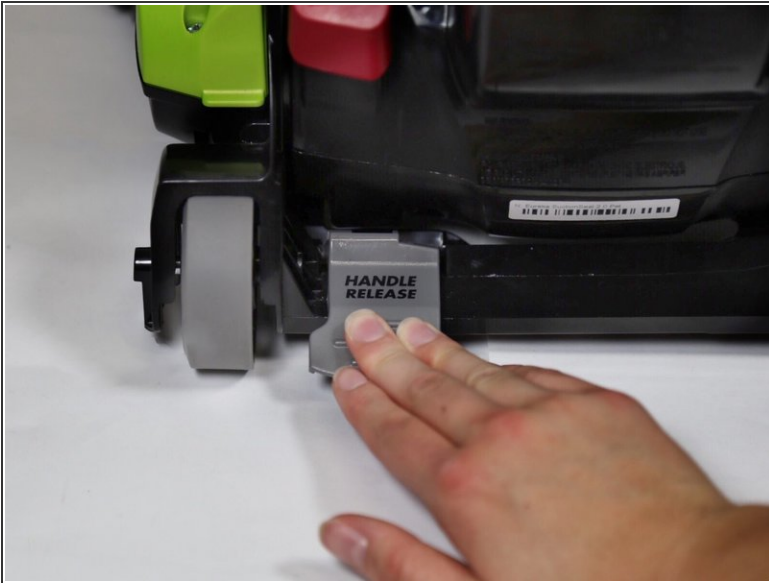
- Pull up and unhook the two front tower latches using two fingers. These are located at the base of the tower.
 - Pull up and unhook the latch on the back of the tower.
 - Firmly lift the vacuum tower up and out of its stand.
- i** The exhaust filter cover can be replaced once the tower is removed. It will not affect the steps.

Step 4



- Remove the four 20mm screws on the top of the vacuum head's cover using a JIS 1 screwdriver.

Step 5



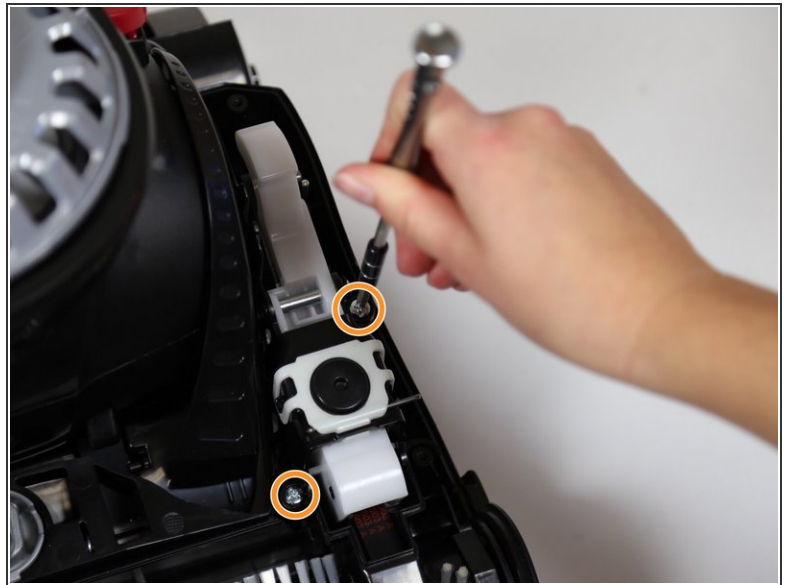
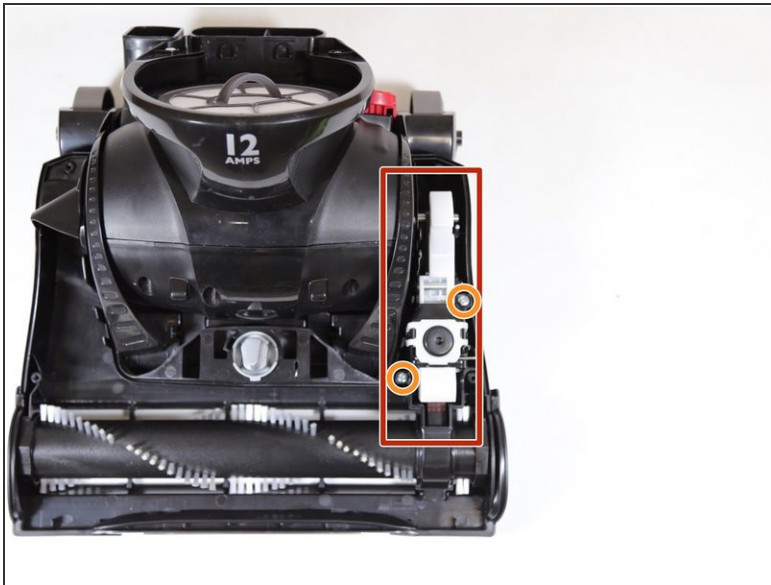
- Turn the vacuum head so that the back is facing you.
 - Press the handle release pedal.
 - Rotate the top of the motor cover down while pressing on the pedal release.
- i** The motor cover should rotate from an upright position back towards the ground, as it would if the handle were still attached.

Step 6



- Locate the two tabs on the back of the cover.
- Pull up on the tabs and lift the cover away from the device.

Step 7 — Belt Latch Assembly



- Locate the belt latch assembly. It will be on your right when the brush roll is facing you.
- Remove the two 20mm screws using a JIS 1 screwdriver.

Step 8



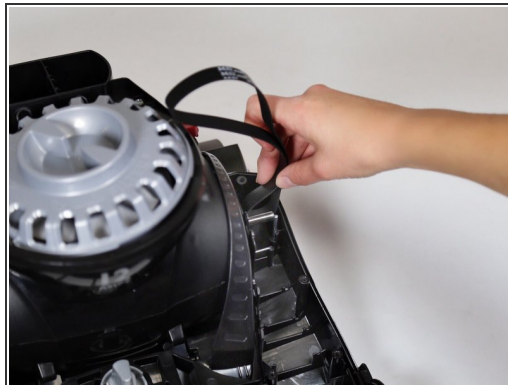
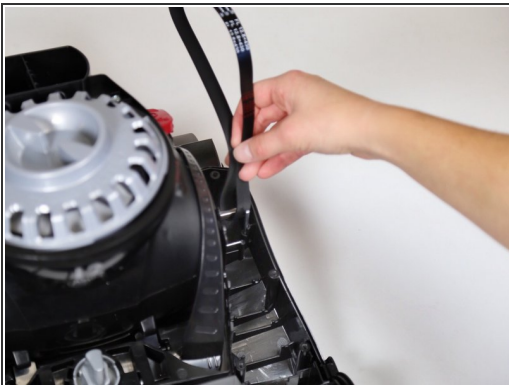
- Lift up on the belt latch assembly and remove it from the vacuum.

Step 9 — Brush Roll



- Grab the brush roll on both ends.
- Lift up on the right side of the brush roll.
- Lift up on the left side of the brush roll, completely removing it from its frame.
- Separate the brush roll from the belt and remove the brush roll from the vacuum.

Step 10 — Brush Roll Belt



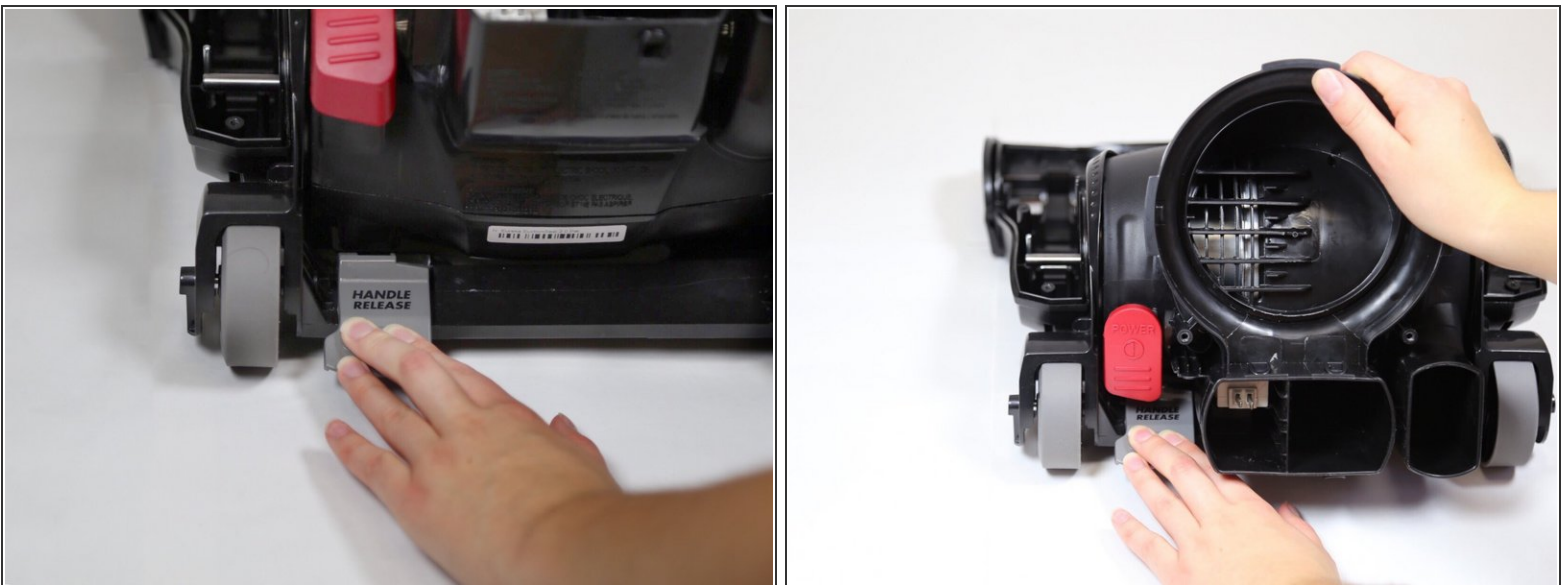
- Rotate the belt until the front is above the motor shaft.
- Twist the belt away from you, allowing the narrow side of the belt to slip between the motor shaft and the vertical rod.
- Separate the belt from the motor shaft.

Step 11 — Motor



- Rotate the motor cover upright until you hear the foot pedal click and the cover won't rotate in either direction.
- Remove the bottom exhaust filter.
- Use a 3.0 hex bit screwdriver to remove the two 20mm screws on the top of the dust cup stand.
- Remove the dust cup stand.

Step 12



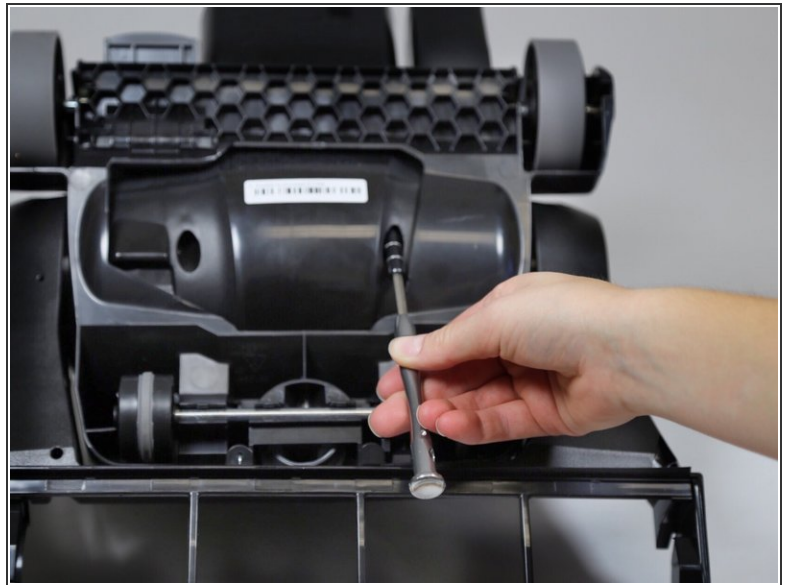
- Press the handle release pedal and rotate the motor cover downward until it is fully reclined.

Step 13



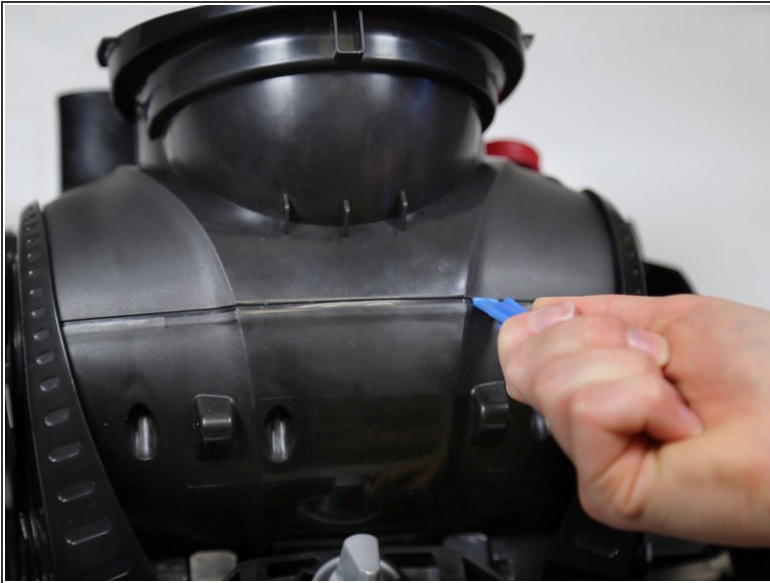
- Use a 3.0 hex bit screwdriver to remove the three 20mm screws on the front of the motor cover.
- ⓘ The screw holes will only be visible if the motor cover is rotated completely downward.


Step 14



- Flip the vacuum over so that the underside of the device is facing upward.
- Use a 3.0 Hex bit screwdriver to remove the two 20mm screws on the bottom of the motor cover.
- ⓘ The two screw holes will only be accessible if the handle release pedal is still released and the motor cover is rotated downward.

Step 15



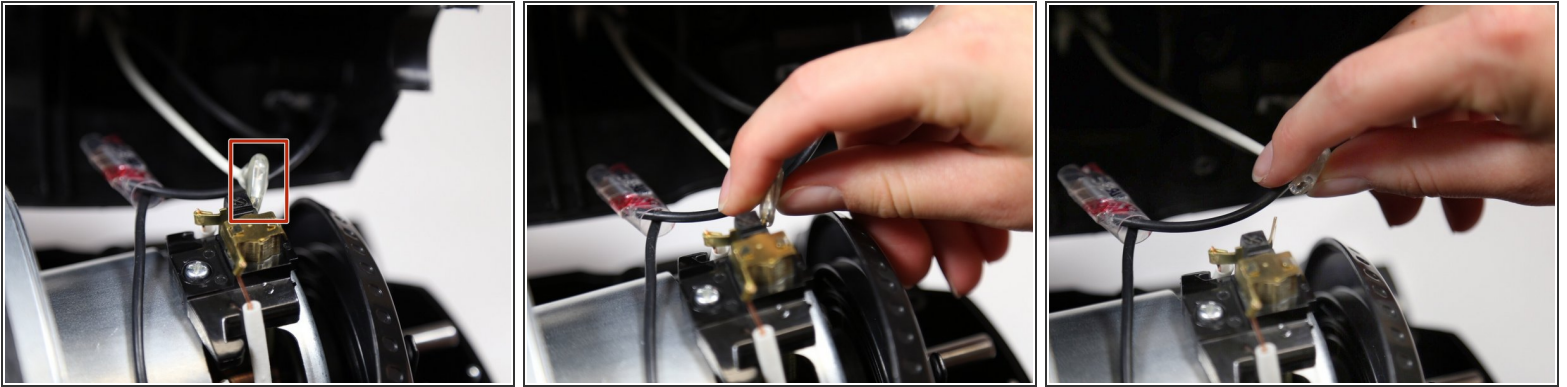
- Flip the vacuum so that it is right side up again with the front of the motor cover facing you.
 - Insert either a metal spudger or a plastic opening tool into the right or left side of the cover seam.
 - Pry upward as you move the tool across the cover, separating the top half of the motor cover from the lower half.
-  There will be some audible popping noises from separating the cover.


Step 16



- Grip the exhaust valve at the top of the motor cover.
- Lift up on the left side of the exhaust valve and then pull the right side upward to pry apart the motor cover.
- ⓘ There will be some audible popping noises from separating the cover.
- ⓘ Separating the cover takes a firm pull. You may need someone to assist you in pulling the cover apart.
- ⓘ When you remove the cover, make sure to keep the cover close to the motor. There is a short wire that connects the top of the cover to the motor. The wire can be damaged if the cover is separated too far.

Step 17




 Make sure the vacuum is unplugged before touching any internal components.

- Grip the white cable that connects the power switch to the motor. Get as close as possible to the motor connection.
- Pull firmly to separate the cable from the motor.

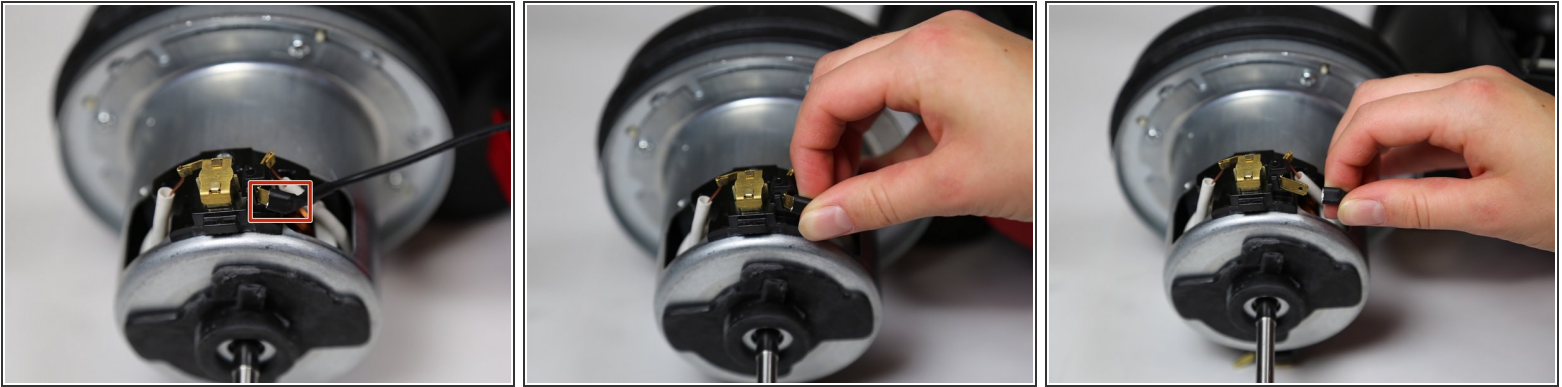
Step 18




 There is a black wire that connects the cover to the motor. Be careful to keep this wire connected and undamaged while removing the motor.

- Lift up on the left side of the motor.
- Move the motor to the left, sliding the motor shaft out of its circular casing.
- Separate the motor completely from the vacuum's base.

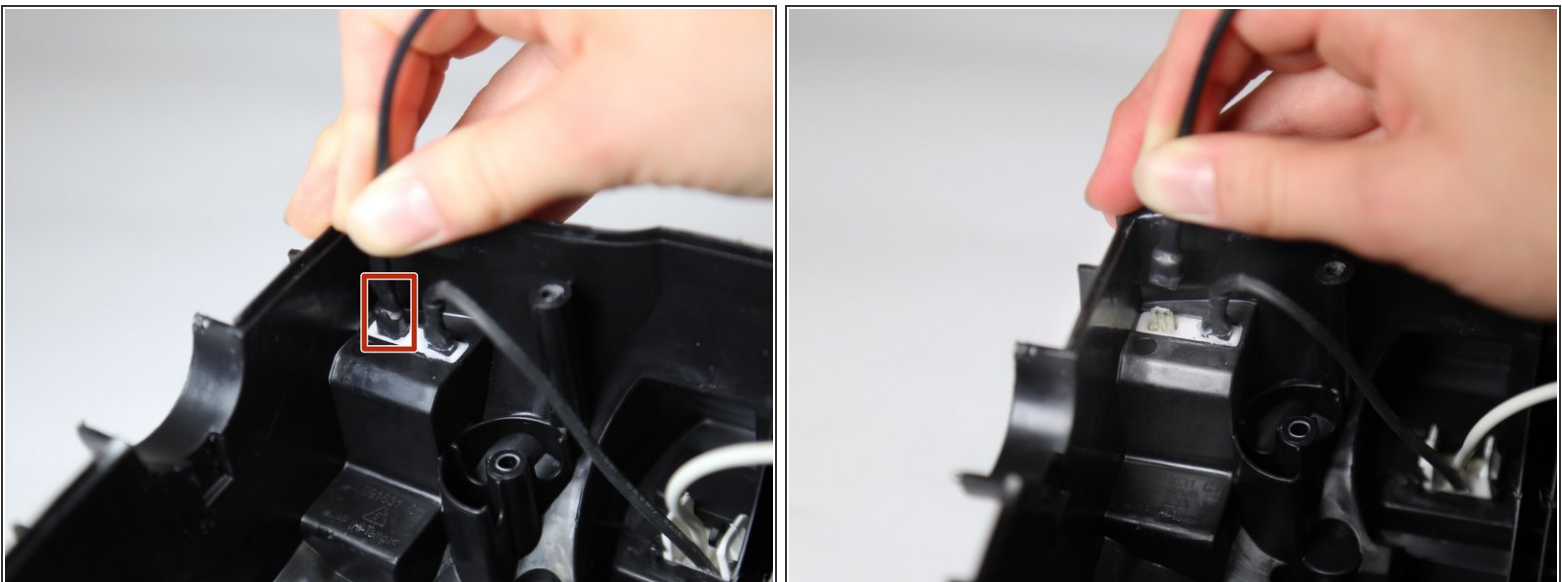
Step 19 — Thermal Fuse



 Make sure the device is unplugged before touching any internal components.

- Grip the black wire that connects the thermal fuse to the motor. Get as close as possible to the motor connection.
- Firmly pull the wire to separate it from the motor.

Step 20



- Follow the black thermal fuse wire back to its connection point with the motor cover.
- Grip the black wire at the connection point between the thermal fuse and the motor cover.
- Firmly pull the wire away from the motor cover to remove the thermal fuse.

To reassemble your device, follow these instructions in reverse order.