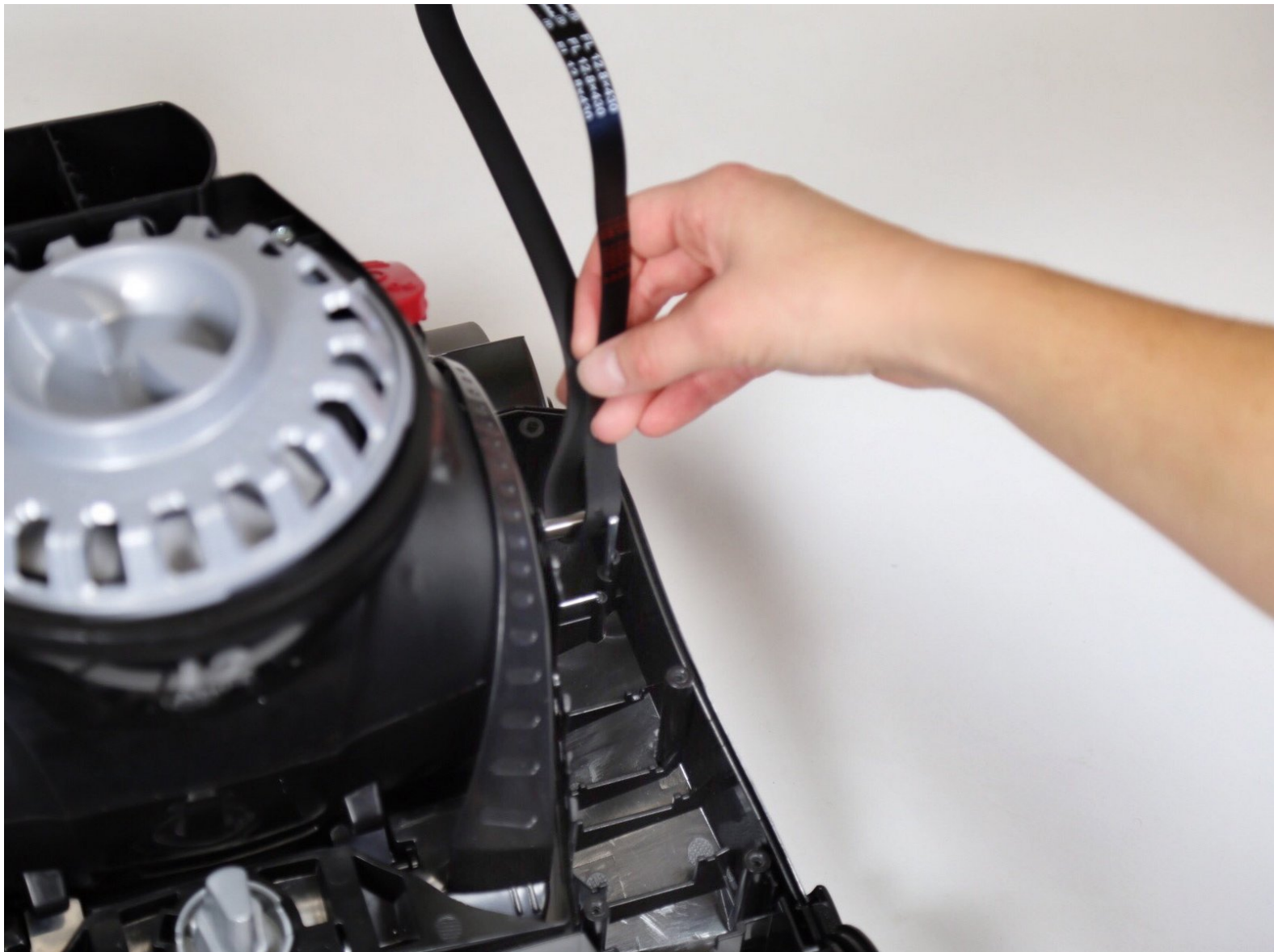




Eureka SuctionSeal 2.0 Pet Brush Roll Belt Replacement

How to replace the Eureka SuctionSeal 2.0 Pet brush roll belt.

Written By: Grayson Clendenon



INTRODUCTION

This guide walks you through the replacement of the Eureka SuctionSeal 2.0 Pet Brush Roll Belt. A damaged brush roll is a common occurrence and can create several problems, making this a useful troubleshooting guide.



TOOLS:

- [JIS #1](#) (1)
-

Step 1 — Dust Cup



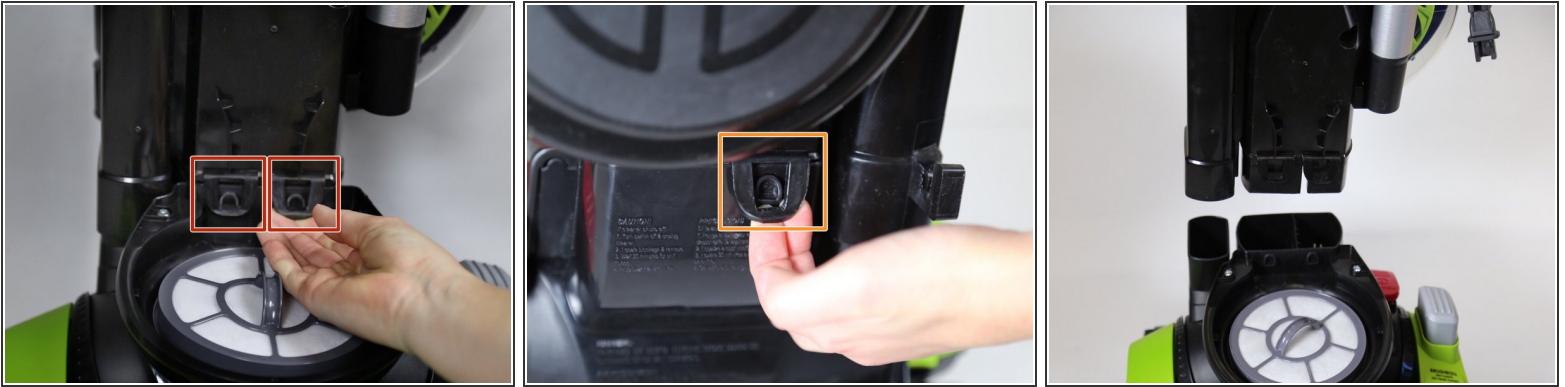
- Place the device upright with the brush roller closest to you.
- Pull up on the latch at the top of the dust cup.
- Tilt the top of the dust cup forward and pull towards yourself, removing the container from the device.

Step 2 — Brush Roll Cover



- Locate the gray exhaust filter cover at the top of the vacuum's base.
- Grip the two tabs in the middle of the filter cover and rotate counter-clockwise.
- Lift the cover away from the vacuum.

Step 3



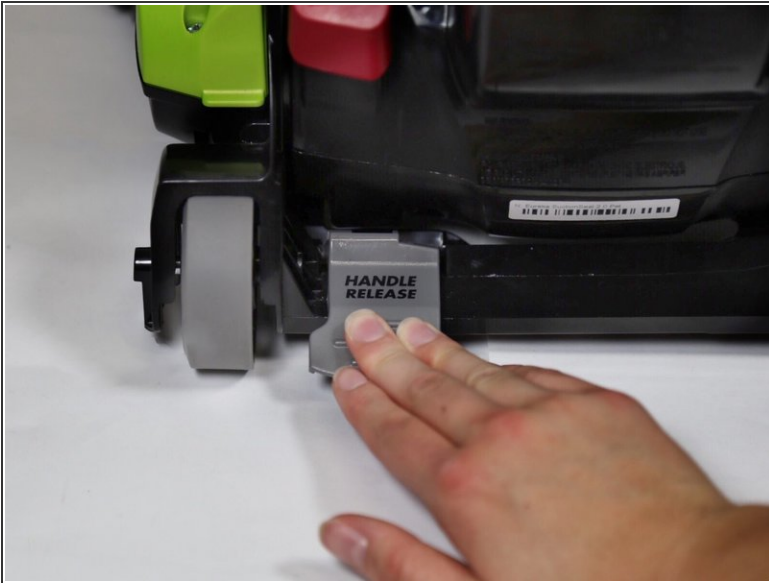
- Pull up and unhook the two front tower latches using two fingers. These are located at the base of the tower.
 - Pull up and unhook the latch on the back of the tower.
 - Firmly lift the vacuum tower up and out of its stand.
- i** The exhaust filter cover can be replaced once the tower is removed. It will not affect the steps.

Step 4



- Remove the four 20mm screws on the top of the vacuum head's cover using a JIS 1 screwdriver.

Step 5



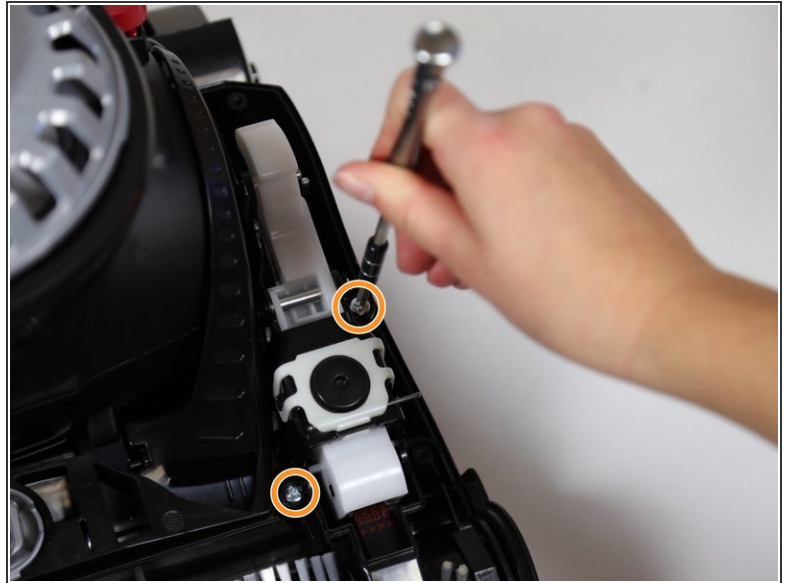
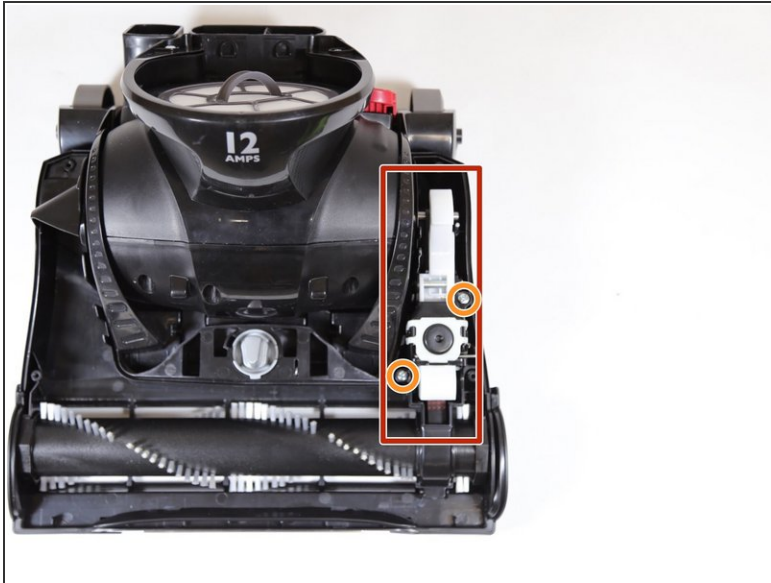
- Turn the vacuum head so that the back is facing you.
 - Press the handle release pedal.
 - Rotate the top of the motor cover down while pressing on the pedal release.
- i** The motor cover should rotate from an upright position back towards the ground, as it would if the handle were still attached.

Step 6



- Locate the two tabs on the back of the cover.
- Pull up on the tabs and lift the cover away from the device.

Step 7 — Belt Latch Assembly



- Locate the belt latch assembly. It will be on your right when the brush roll is facing you.
- Remove the two 20mm screws using a JIS 1 screwdriver.

Step 8



- Lift up on the belt latch assembly and remove it from the vacuum.

Step 9 — Brush Roll



- Grab the brush roll on both ends.
- Lift up on the right side of the brush roll.
- Lift up on the left side of the brush roll, completely removing it from its frame.
- Separate the brush roll from the belt and remove the brush roll from the vacuum.

Step 10 — Brush Roll Belt



- Rotate the belt until the front is above the motor shaft.
- Twist the belt away from you, allowing the narrow side of the belt to slip between the motor shaft and the vertical rod.
- Separate the belt from the motor shaft.

To reassemble your device, follow these instructions in reverse order.

This document was generated on 2020-11-28 06:02:59 AM (MST).

