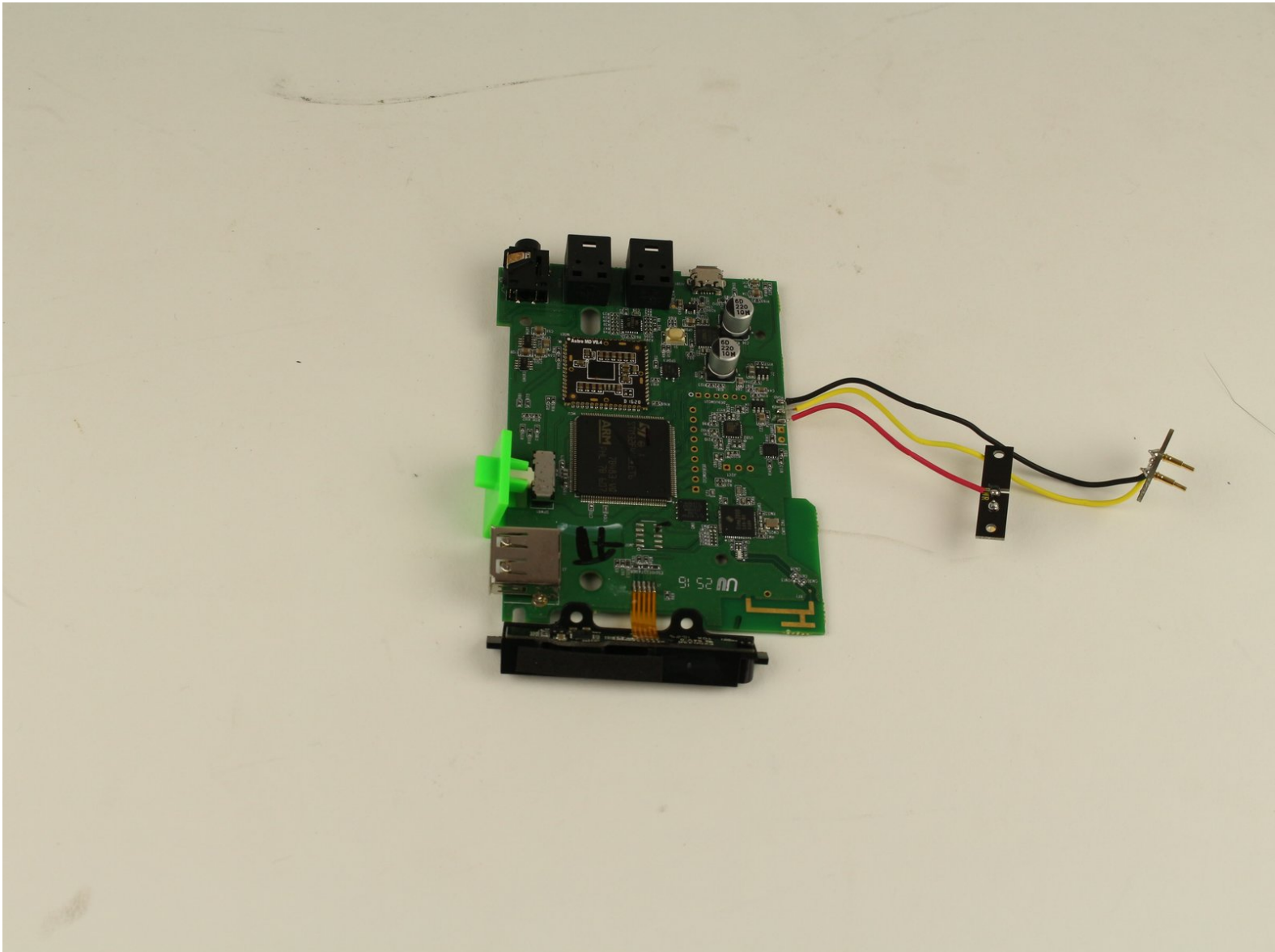




Astro A50 2016 Base Station Motherboard Replacement

How to removes the Astro A50 2016 motherboard from the base station.

Written By: Vincent Seguin



INTRODUCTION

The motherboard is the large circuit board in the base station that controls the charging and sending of audio to the headset. This guide will show you how to disassemble and remove the motherboard from the base station.



TOOLS:

- [iFixit Opening Tools](#) (1)
 - [T8 Torx Screwdriver](#) (1)
 - [T6 Torx Screwdriver](#) (1)
-

Step 1 — Base Station Motherboard



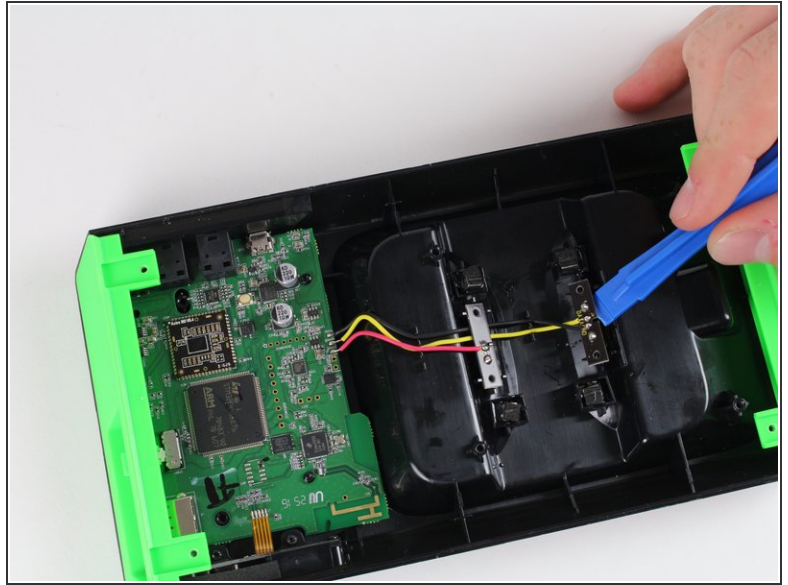
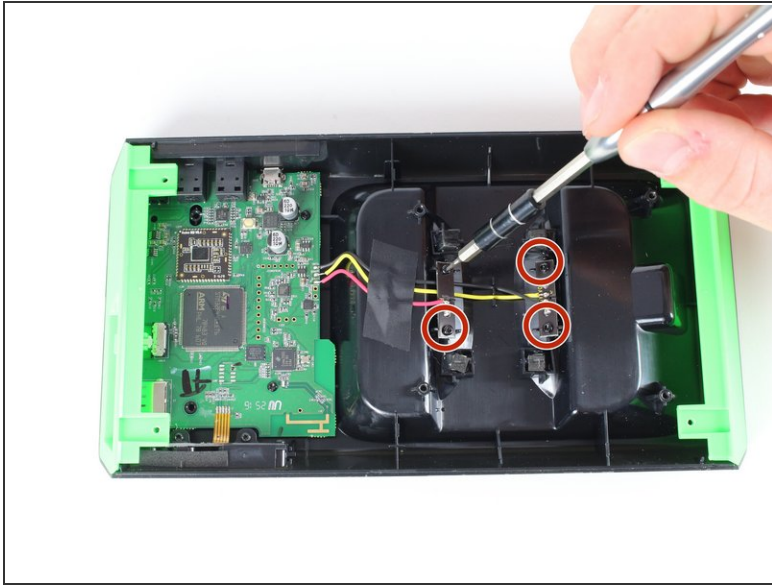
- Remove the four rubber feet from the bottom of the base station using the plastic opening tool.

Step 2



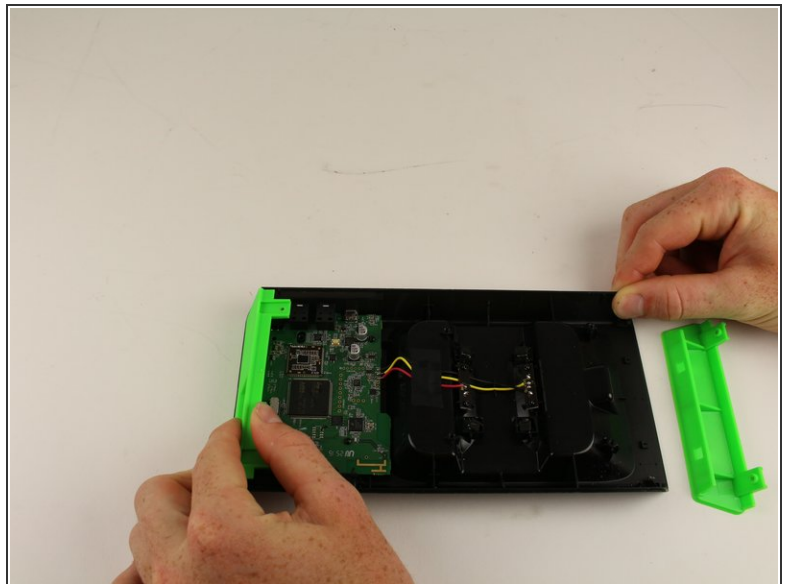
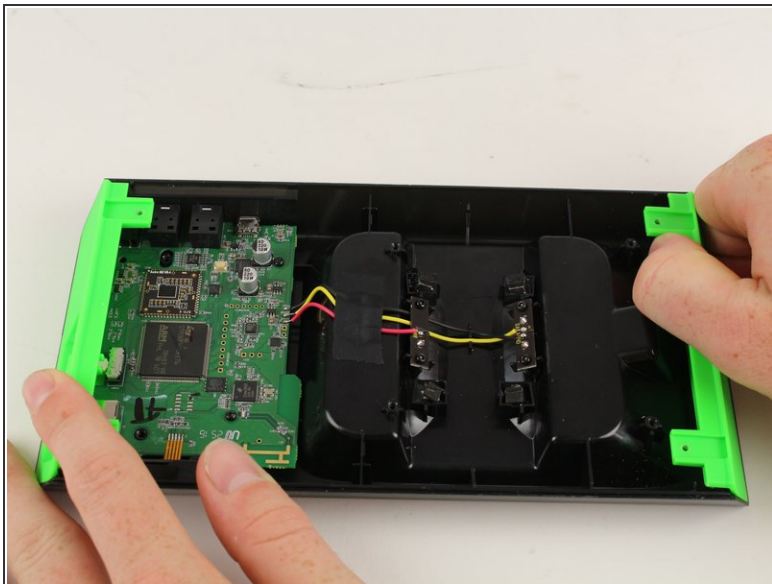
- Remove the ten 6 mm screws using a T8 screwdriver.

Step 3



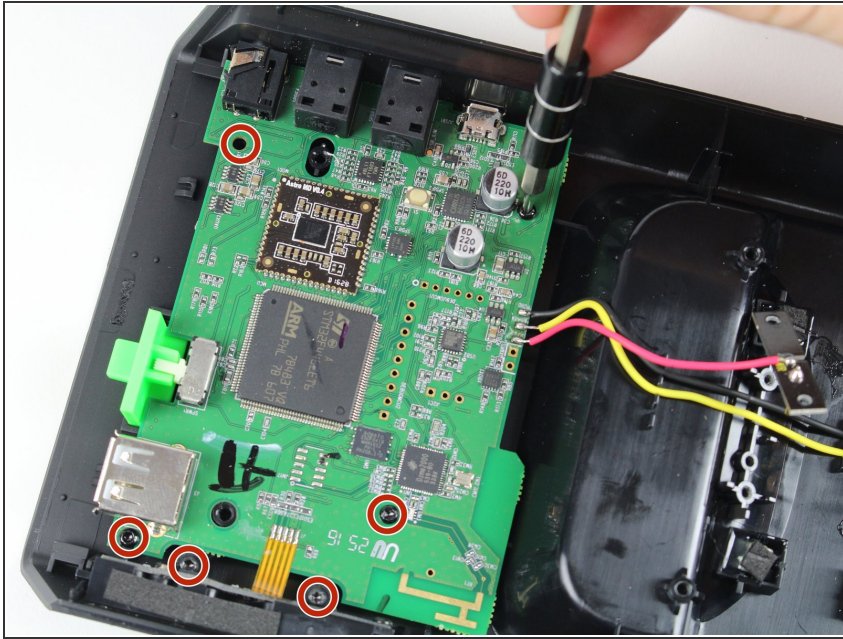
- Remove the four 6 mm screws using a T6 screwdriver.
- Remove each metal plate by lodging the plastic opening tool underneath it and using your hands to lift the plate away from the device.

Step 4



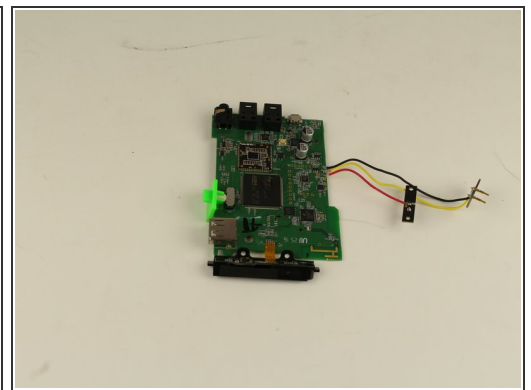
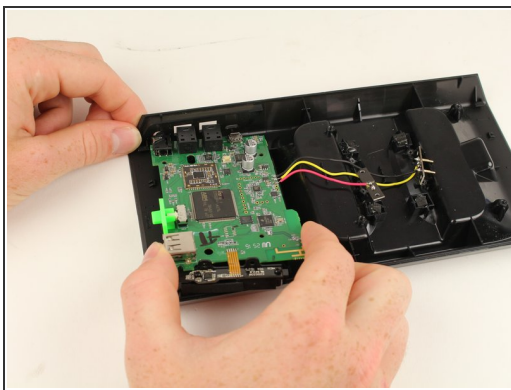
- Use your hand to gently pull the green side plates away from the center of the device.

Step 5



- Remove the six 6mm screws using a T6 screwdriver.

Step 6



- Lift up the motherboard from the base station and pull it away from the device to remove it.

To reassemble your device, follow these instructions in reverse order.