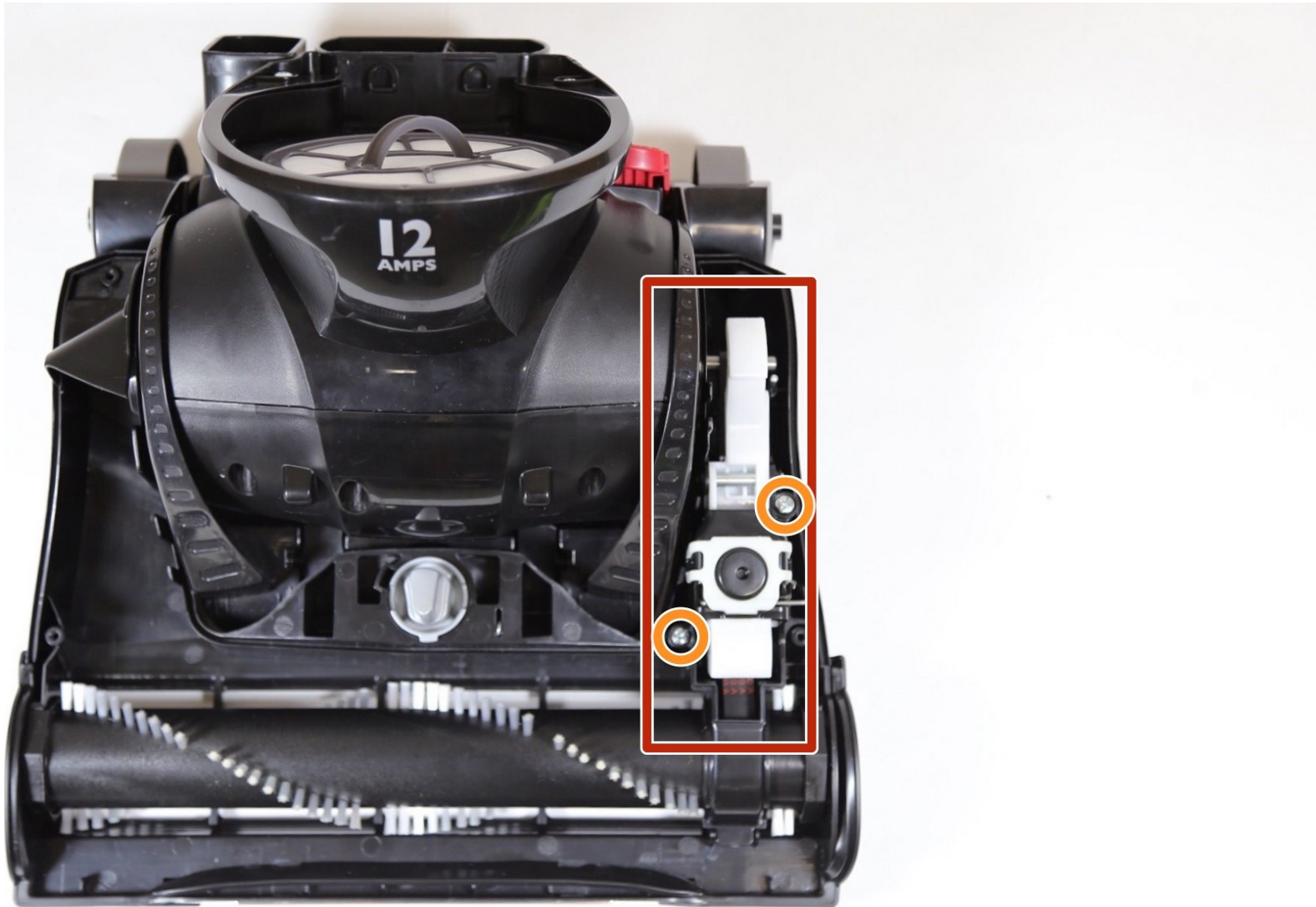




Eureka SuctionSeal 2.0 Pet Belt Latch Assembly Replacement

How to replace the Eureka SuctionSeal 2.0 Pet belt latch assembly.

Written By: Grayson Clendenon



INTRODUCTION

This guide walks you through removing the belt latch assembly in the Eureka SuctionSeal 2.0 Pet vacuum. If the brush roll pedal on your vacuum is not working, you may find this guide useful.

TOOLS:

- **JIS #1** (1)
-

Step 1 — Dust Cup



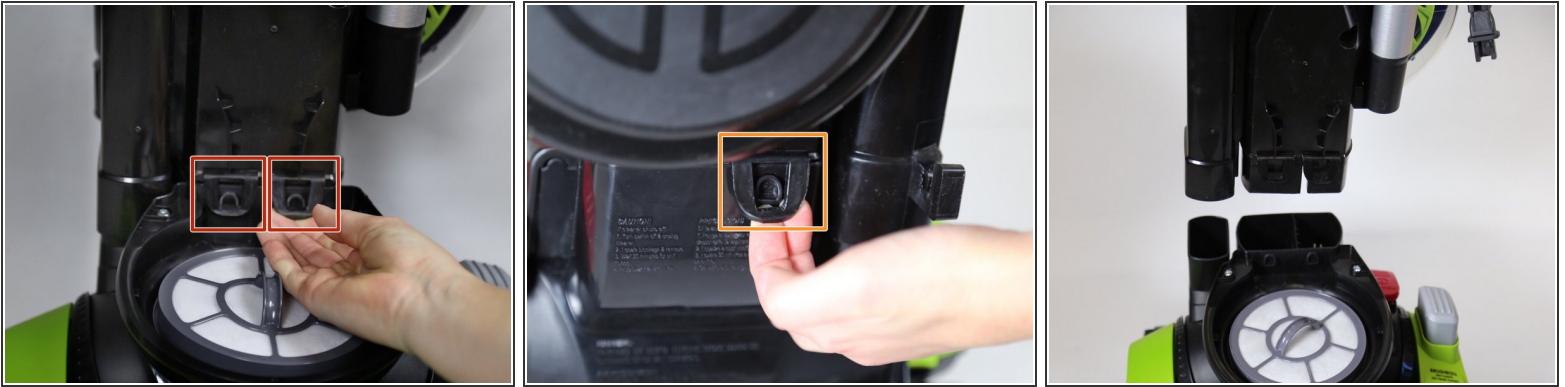
- Place the device upright with the brush roller closest to you.
- Pull up on the latch at the top of the dust cup.
- Tilt the top of the dust cup forward and pull towards yourself, removing the container from the device.

Step 2 — Brush Roll Cover



- Locate the gray exhaust filter cover at the top of the vacuum's base.
- Grip the two tabs in the middle of the filter cover and rotate counter-clockwise.
- Lift the cover away from the vacuum.

Step 3



- Pull up and unhook the two front tower latches using two fingers. These are located at the base of the tower.
 - Pull up and unhook the latch on the back of the tower.
 - Firmly lift the vacuum tower up and out of its stand.
- i** The exhaust filter cover can be replaced once the tower is removed. It will not affect the steps.

Step 4



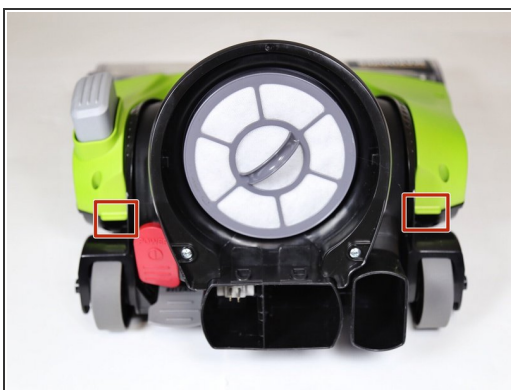
- Remove the four 20mm screws on the top of the vacuum head's cover using a JIS 1 screwdriver.

Step 5



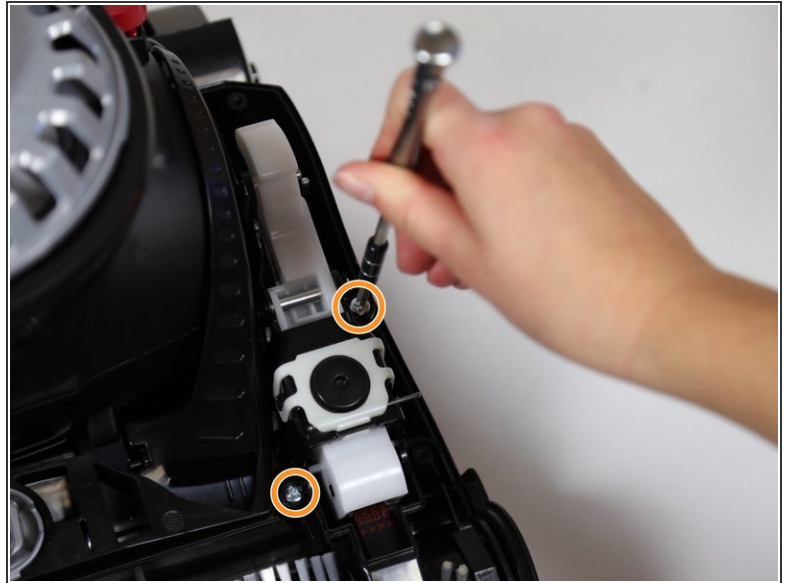
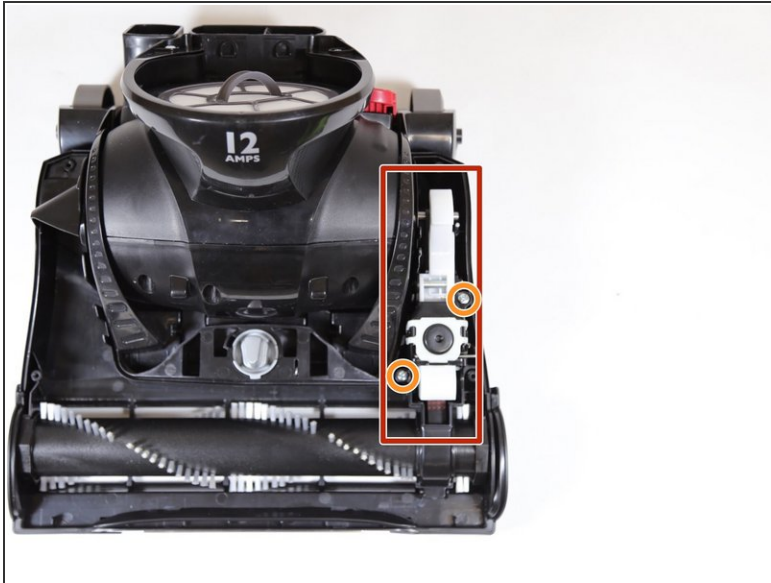
- Turn the vacuum head so that the back is facing you.
 - Press the handle release pedal.
 - Rotate the top of the motor cover down while pressing on the pedal release.
- i** The motor cover should rotate from an upright position back towards the ground, as it would if the handle were still attached.

Step 6



- Locate the two tabs on the back of the cover.
- Pull up on the tabs and lift the cover away from the device.

Step 7 — Belt Latch Assembly



- Locate the belt latch assembly. It will be on your right when the brush roll is facing you.
- Remove the two 20mm screws using a JIS 1 screwdriver.

Step 8



- Lift up on the belt latch assembly and remove it from the vacuum.

To reassemble your device, follow these instructions in reverse order.