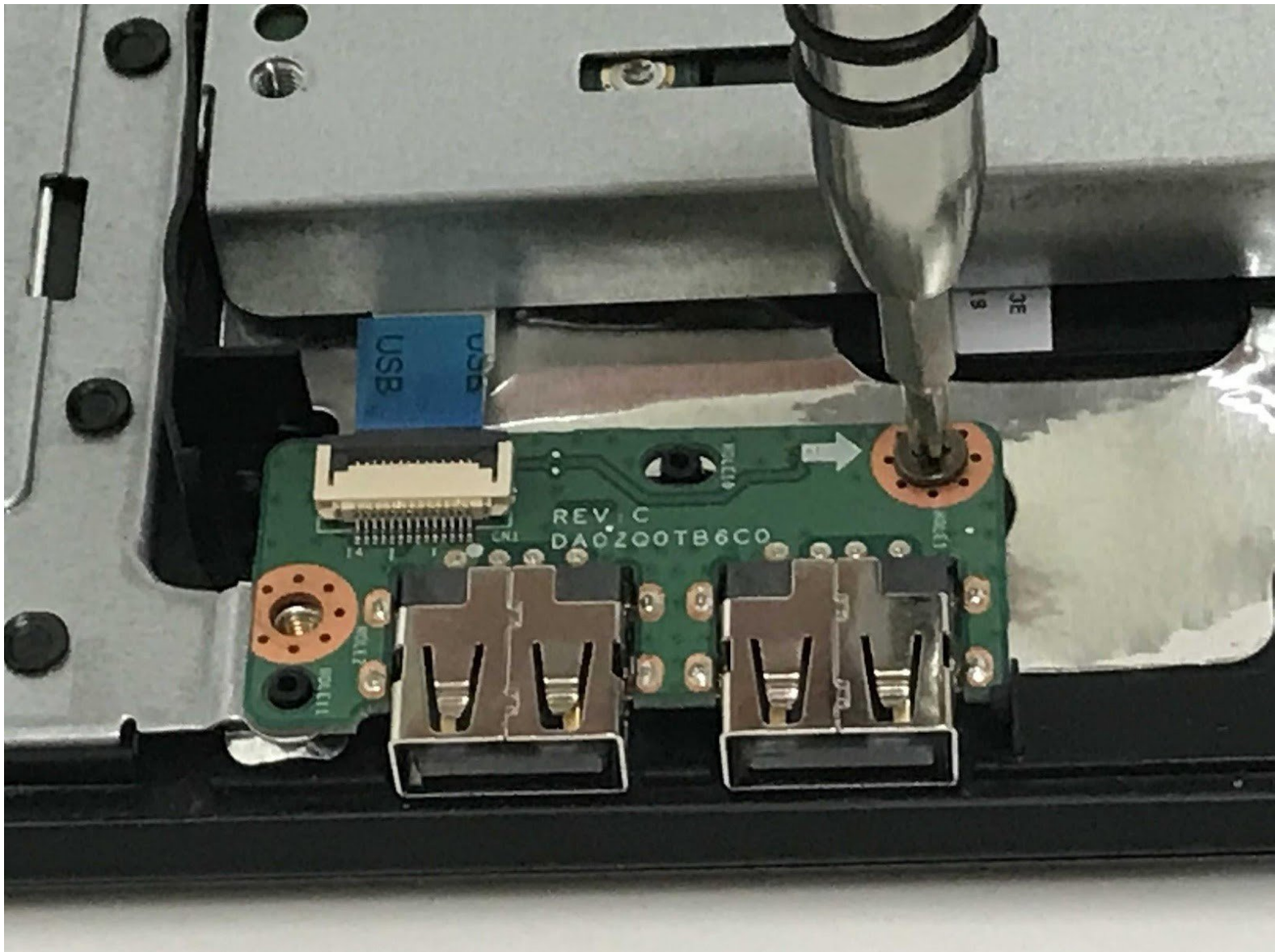




# Acer Aspire E5-471-5456 USB Port Replacement

This guide will help with the removal of the USB ports.

Written By: Justin Saeidian



## INTRODUCTION

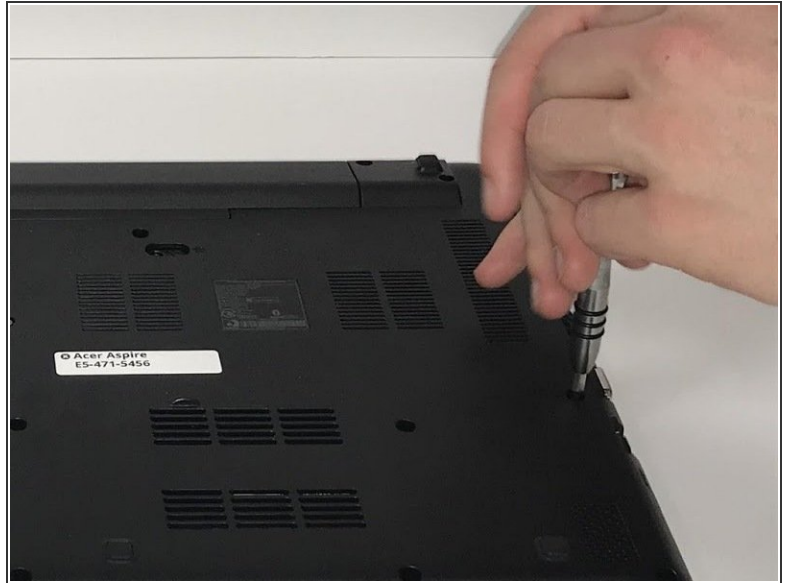
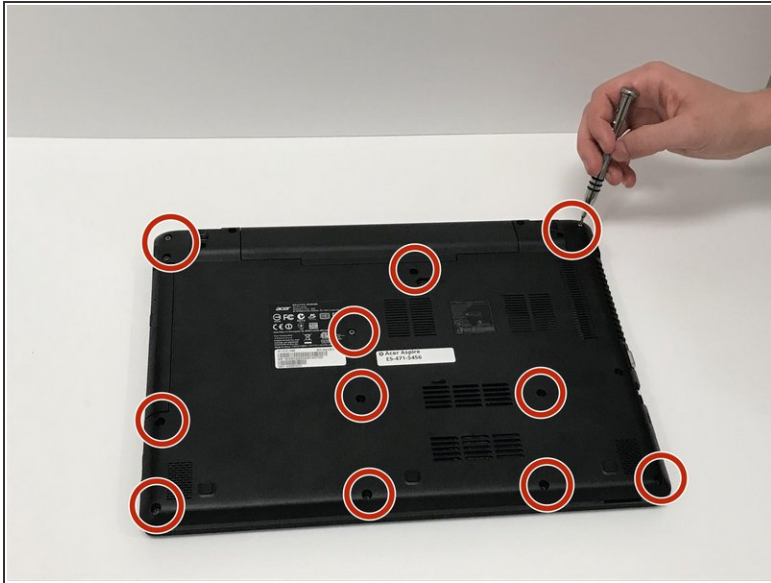
The USB port is one of the most commonly used ports on your computer. Having a functional USB port is almost required to allow your computer to interface with other devices. The USB port may have a buildup of dust that can cause issues with connection to the port.



### TOOLS:

- [iFixit Opening Tools](#) (1)
  - [Phillips #0 Screwdriver](#) (1)
-

## Step 1 — Back Cover



- Carefully place the closed computer on a flat surface, with it oriented screen down.
- Now you need to use the Phillips #0 Screwdriver to remove all 17 of the M2.5X8 mm screws. Use the red circles on the diagram to help you locate these screws.

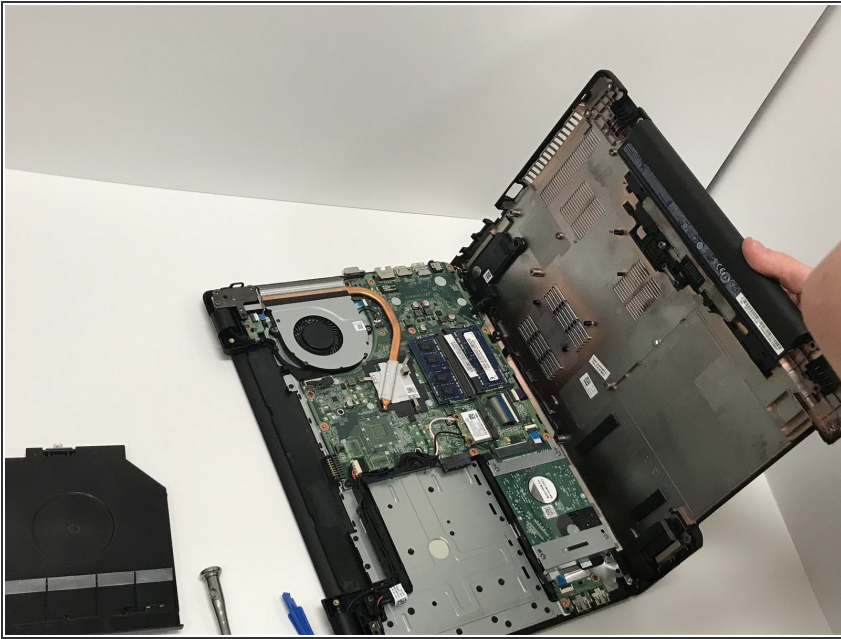
## Step 2



- Use an opening tool to gently pry open the case.
  - ⓘ Take extreme care when removing the case to not get the case stuck on any of the ports. Make sure that to evenly open the case and not pry one side open before the other to avoid damage.
  - ⓘ Slowly peel the cover off and make sure there are no wires or clips still connecting the two pieces together. These pieces are extremely fragile so it is vital to take your time and only use light pressure.

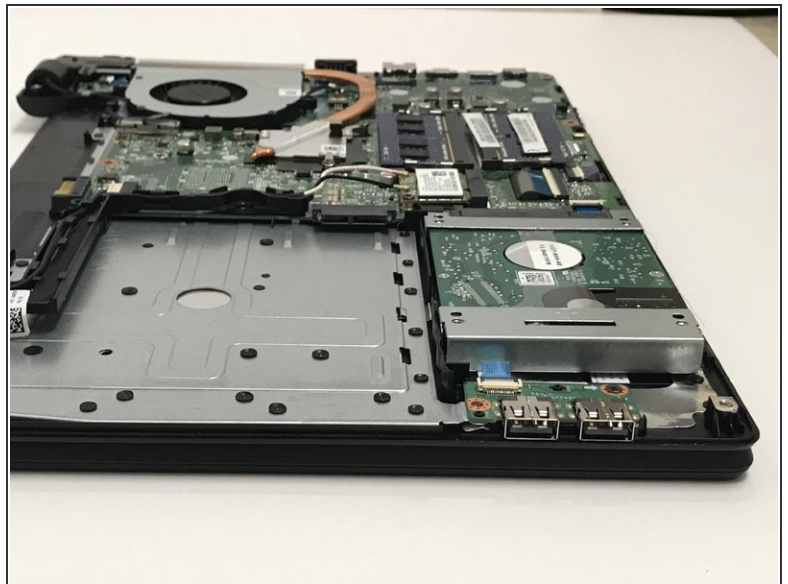
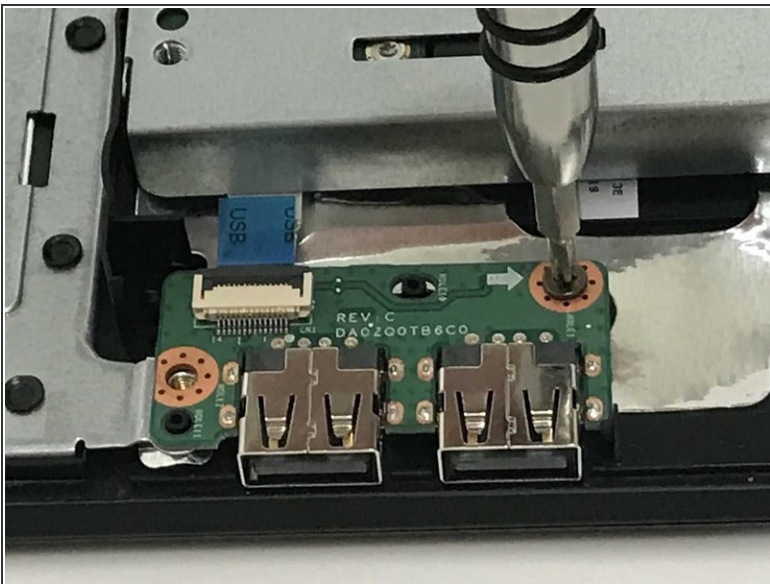


### Step 3



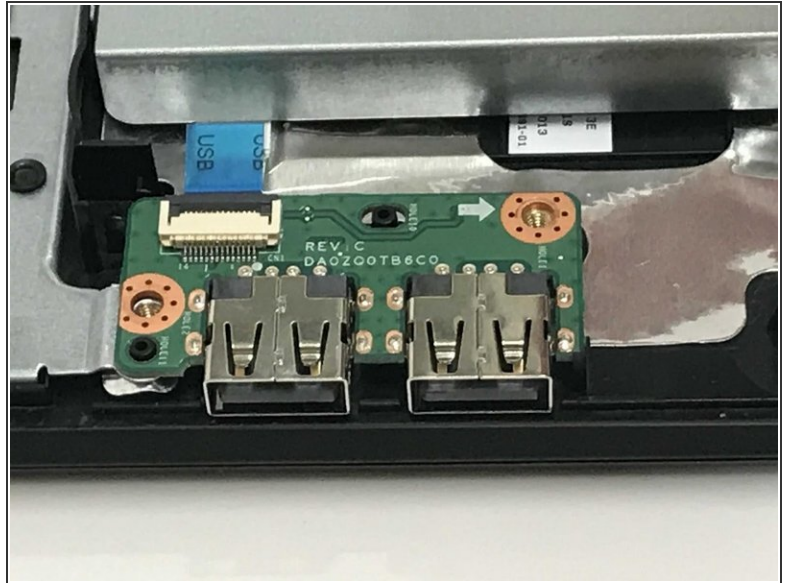
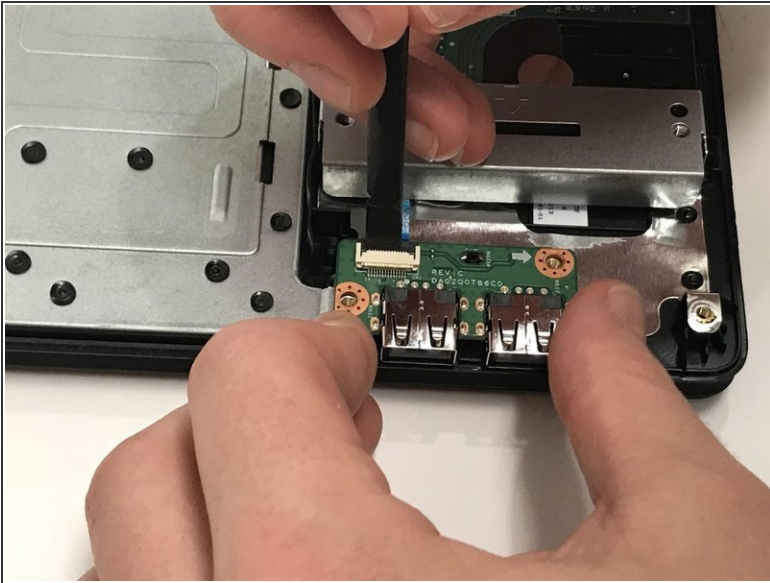
- Place cover and screws aside and you are now free to access the different components of this laptop.

### Step 4 — USB Port



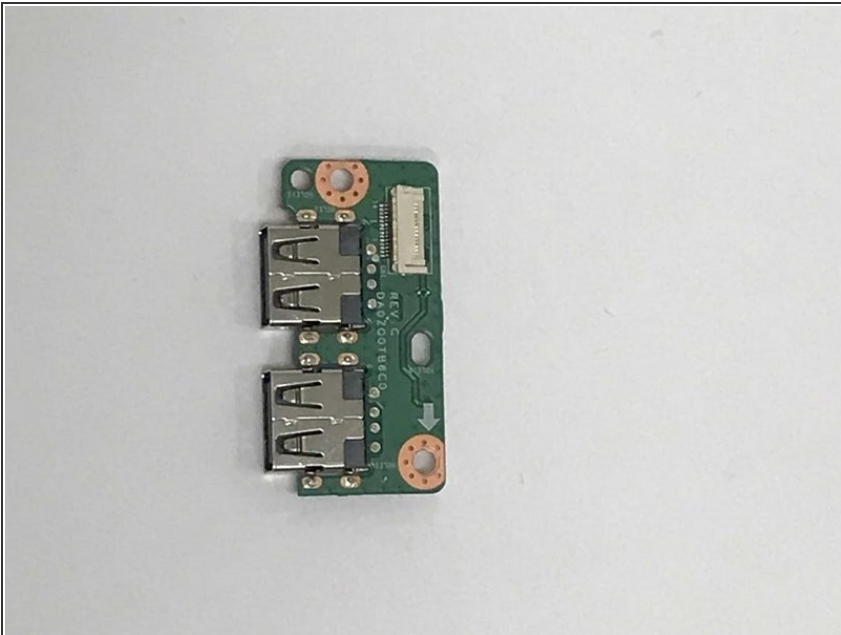
- Locate the two USB ports in the bottom corner of the laptop.
- Use a screwdriver to take out the M2X3 mm screw located in the orange circle. For an easier reassembly, take note that the USB port has a white arrow that indicates which orange hole the screw should be returned to.

## Step 5



- Remove the cable (look for the one with a blue tag reading "USB") very carefully as it is fragile by using the opening tool.

## Step 6



- The USB ports should now be able to be removed from the laptop, carefully.

To reassemble your device, follow these instructions in reverse order.

This document was generated on 2020-11-13 04:59:25 PM (MST).

