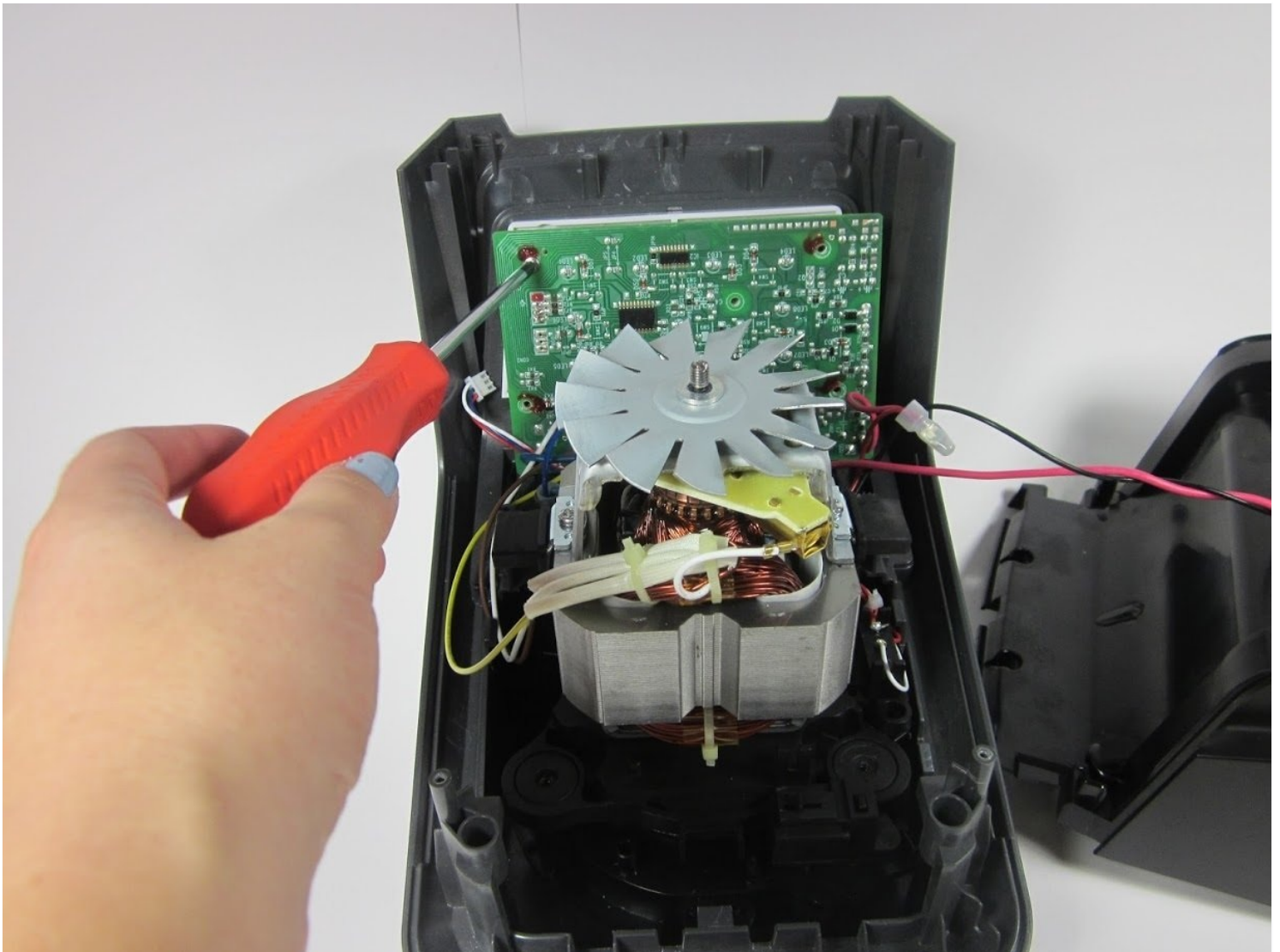




Nutri Ninja Ninja Blender Duo BL641 Motherboard Replacement

In order to begin this guide, you must first...

Written By: Will Jones



INTRODUCTION

In order to begin this guide, you must first follow the steps in our Nutri Ninja Ninja Blender Duo BL641 Body Disassembly guide. Once you have finished, you may begin this guide.

TOOLS:

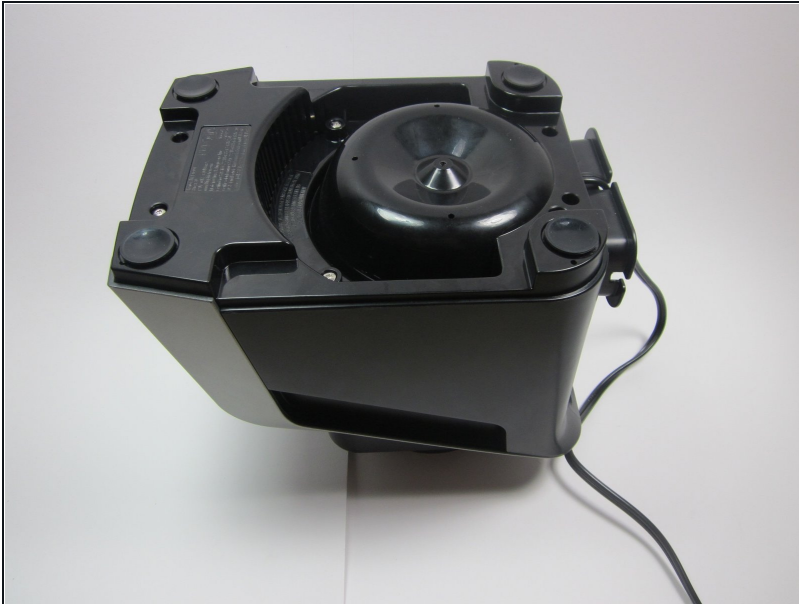
[Phillips #0 Screwdriver](#) (1)

[Star Bit Screwdriver](#) (1)

[iFixit Opening Tools](#) (1)

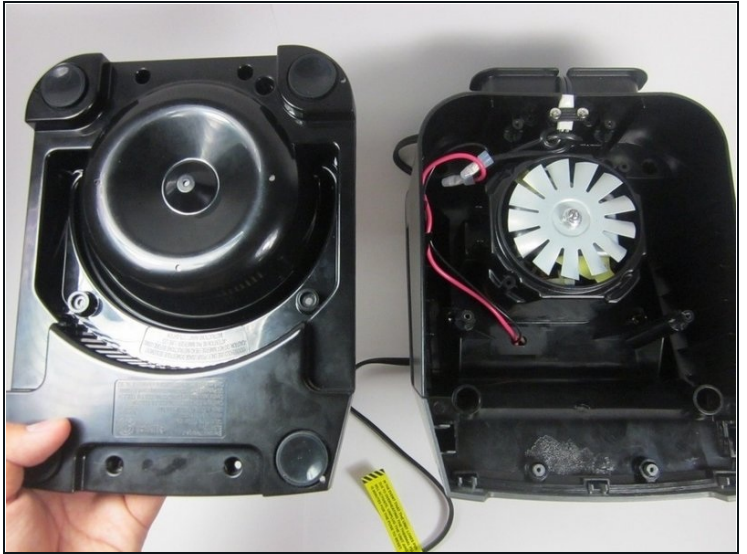
[Portable Soldering Iron](#) (1)

Step 1 — Nutri Ninja Ninja Blender Duo BL641 Body Disassembly



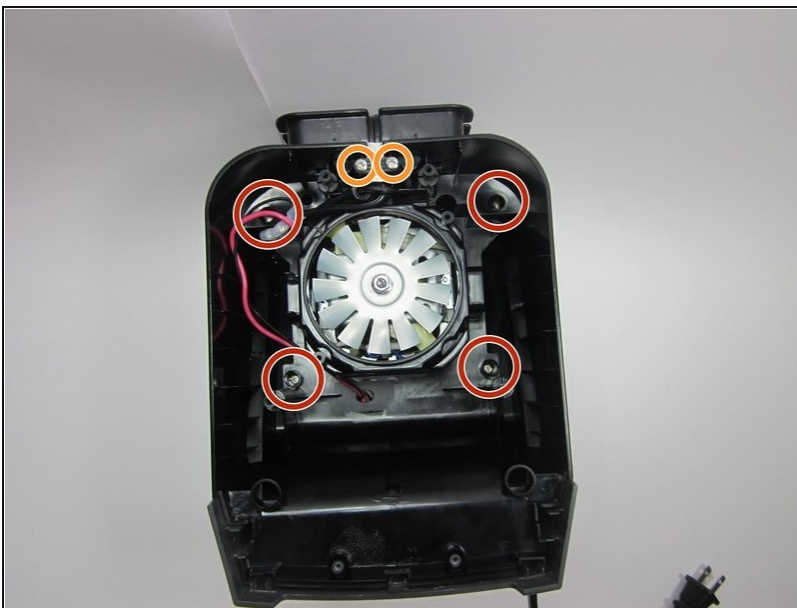
- Turn blender upside down

Step 2



- Remove these six screws (0.5 inch 5 gauge phillip's head)
 - Note: 2 of the screws will be star shaped circled in blue
- Lift the bottom panel off

Step 3



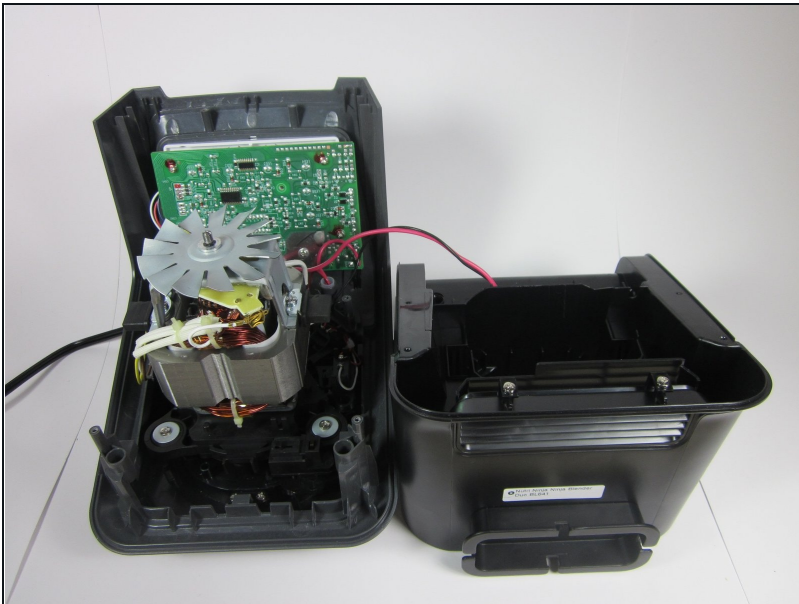
- Unscrew and remove these six phillip's screws. (0.5 inch 5 gauge phillips)
 - Note: The screws circled in blue are 1/8" longer and have a slightly different top than the rest. These are the only two screws that are different than the rest.

Step 4



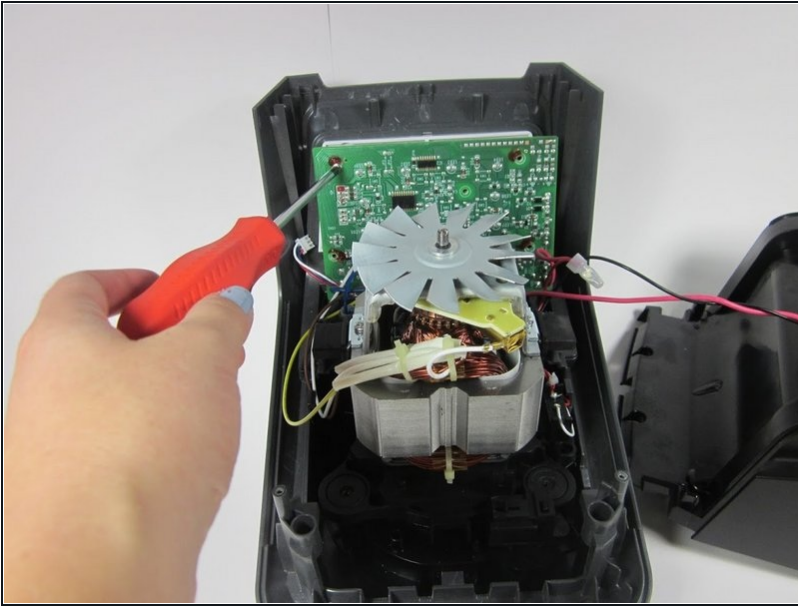
- Insert pry tool in between the two plastic pieces to separate them
- Move pry tool back and forth from right to left until the two pieces begin to separate as shown.
- Pry the two pieces apart with your hands as shown in the picture to finish separating the pieces.

Step 5



- This completes the disassembly of the main body of the blender so you can continue to perform replacements on the internal parts.

Step 6 — Motherboard



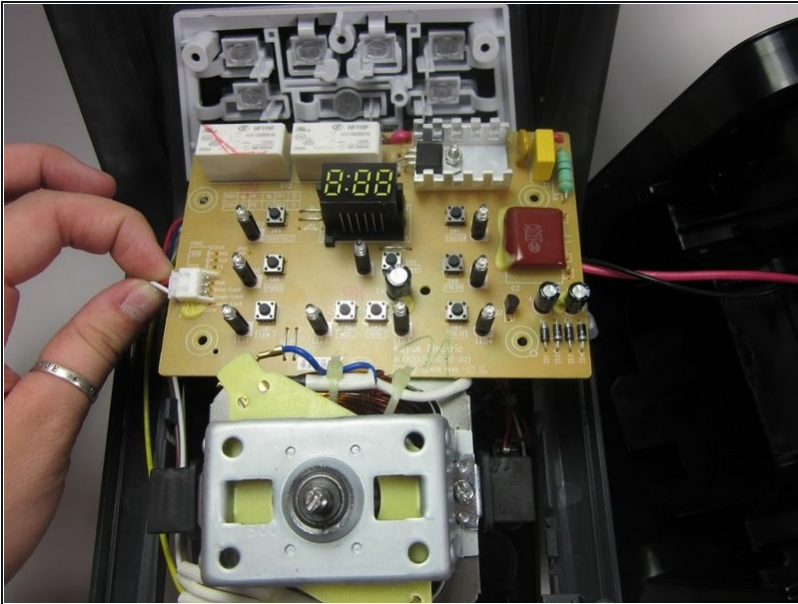
- Remove the phillip's screws from the motherboard.

Step 7



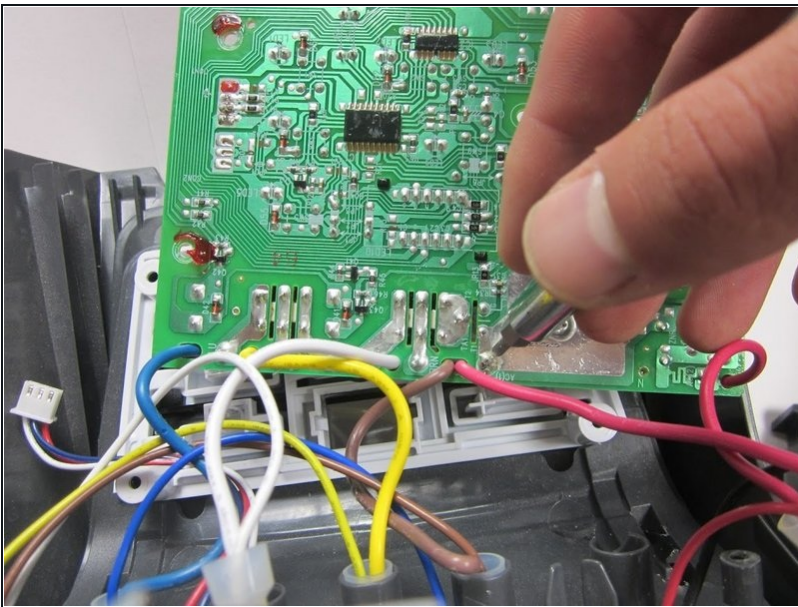
- Flip the motherboard over.

Step 8



- Remove any plugs from the motherboard.

Step 9



- Desolder wires and cords. Replace old motherboard with new one, and resolder wires and cords.

To reassemble your device, follow these instructions in reverse order.