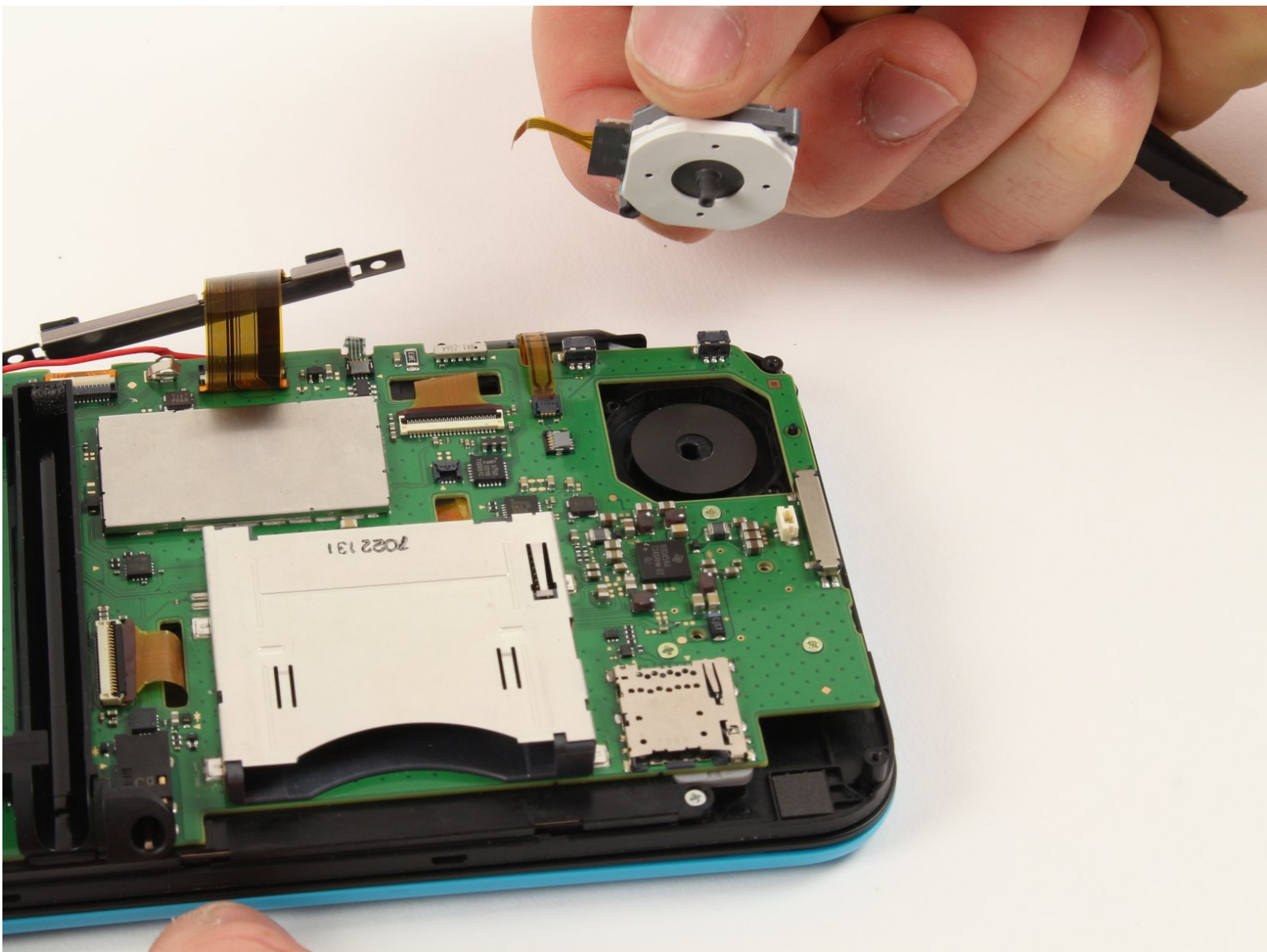




# New Nintendo 2DS XL Circle Pad Replacement

This guide will allow you to access and replace or clean the circle pad on your New Nintendo 2DS XL.

Written By: Tim Newman



---

## INTRODUCTION

This guide outlines the procedure for accessing the device circle pad. To access the circle pad, the entire device must be opened. This might be intimidating at first, but as long as the guide directions are followed, no damage to the device is expected. For more information, refer to our [troubleshooting page](#).

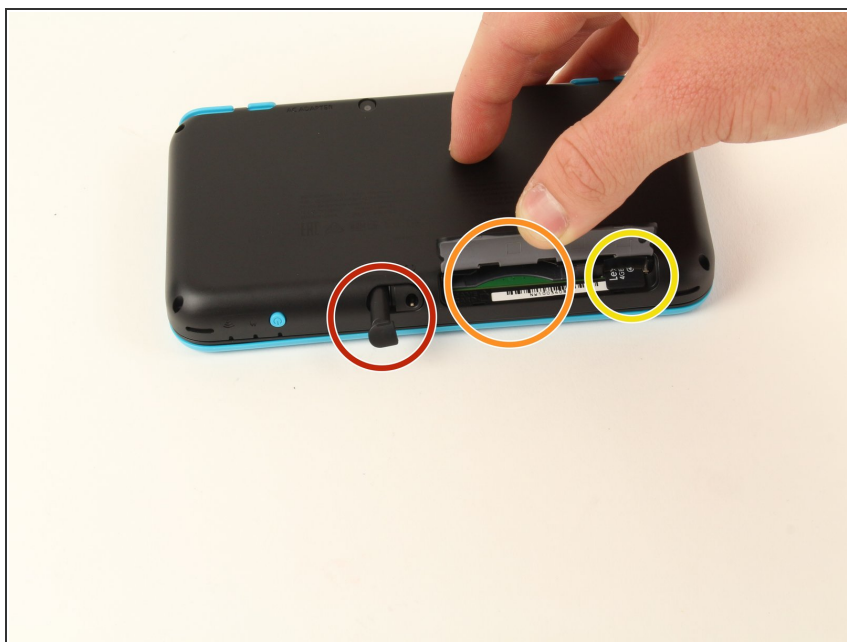
---



### TOOLS:

- [Tri-point Y0 Screwdriver](#) (1)
  - [Tweezers](#) (1)
  - [Spudger](#) (1)
  - [Phillips PH000 Screwdriver](#) (1)
-

## Step 1 — Back Cover Removal Preparation



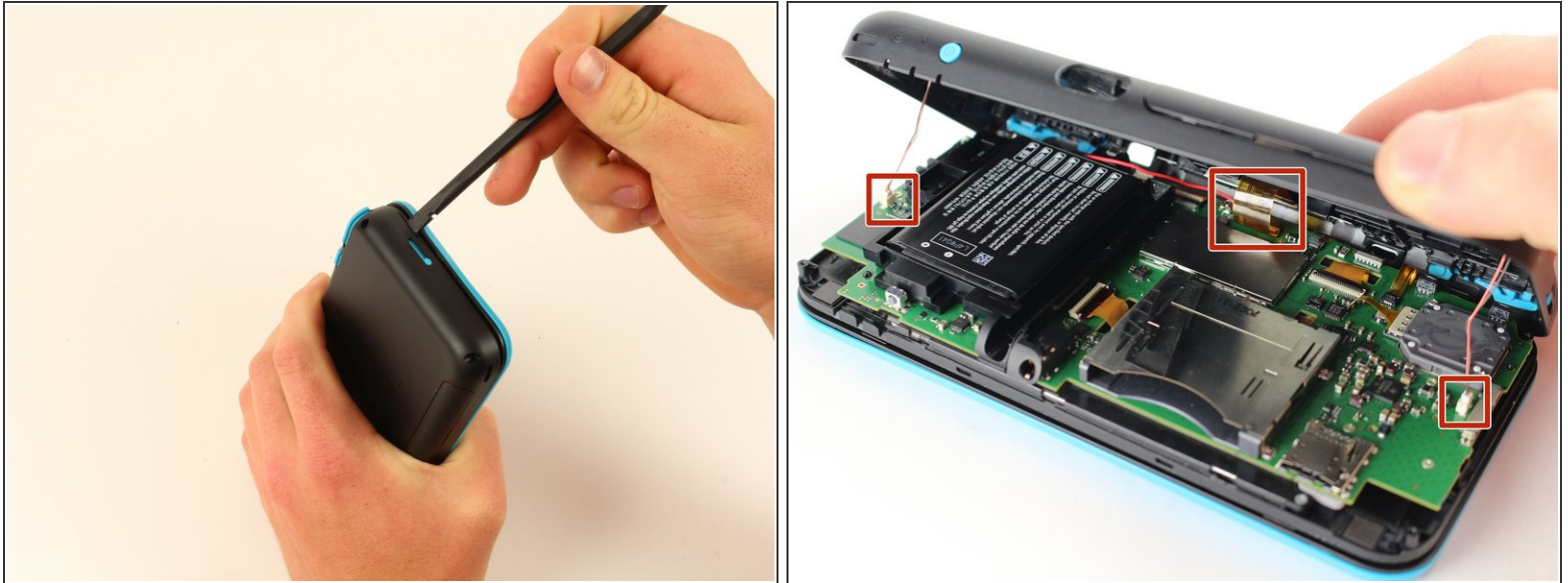
- Before starting the disassembly, remove
  - The stylus
  - Any game cartridge
  - The SD card

## Step 2 — Back Cover Removal



- Unscrew the four 6mm tri-point screws located at the four corners of the bottom panel.

## Step 3 — Case Separation



**⚠** Be careful when separating the bottom panel from the front casing to avoid breaking the three cables connected to the motherboard (two on each side and one in the rear).

- Using a spudger, separate the back panel from the front casing by gently prying around the panel.
- There are many clips along the hinge of the case, so it is recommended to work your way along one short side and the two long sides before finishing the last short side.

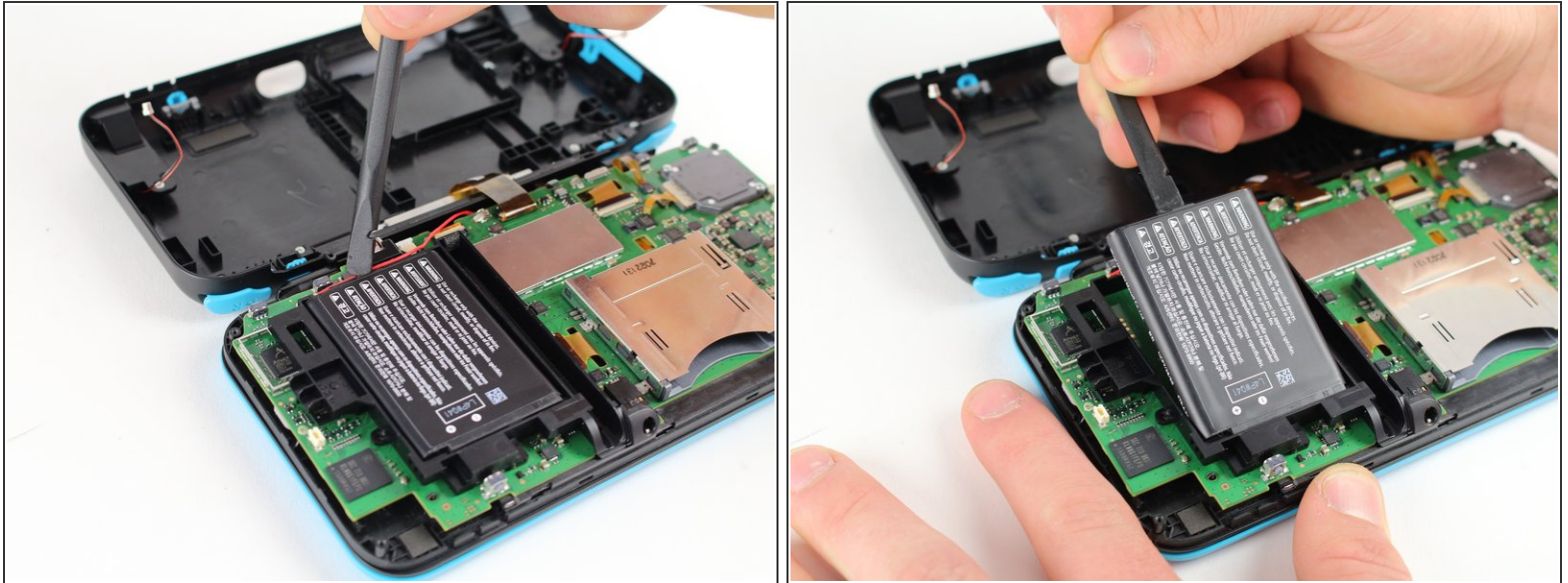
## Step 4



- Using tweezers, disconnect the two cables that connect the rear buttons on either side to the motherboard by gently pulling them upwards.

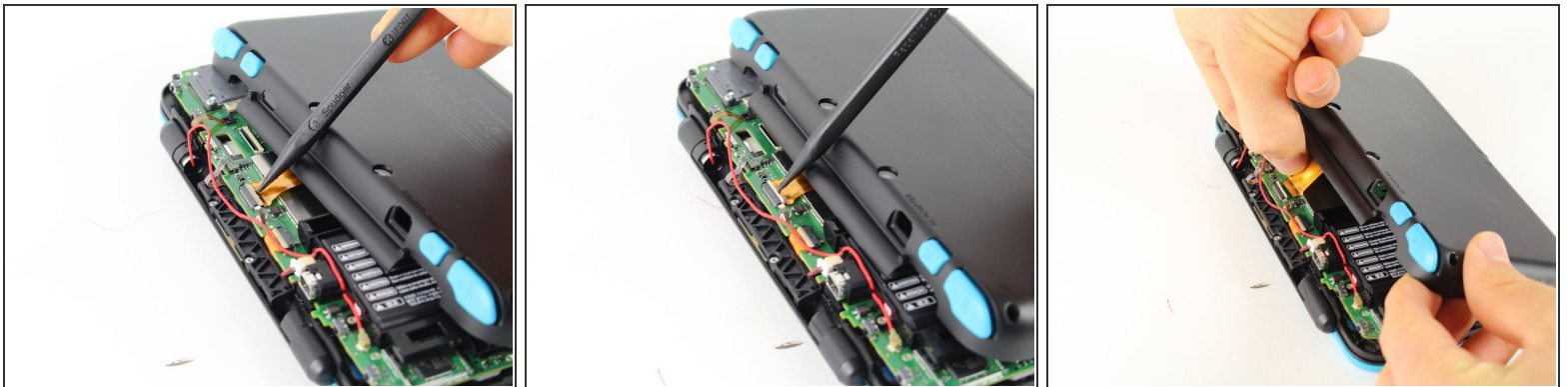


## Step 5 — Battery Removal



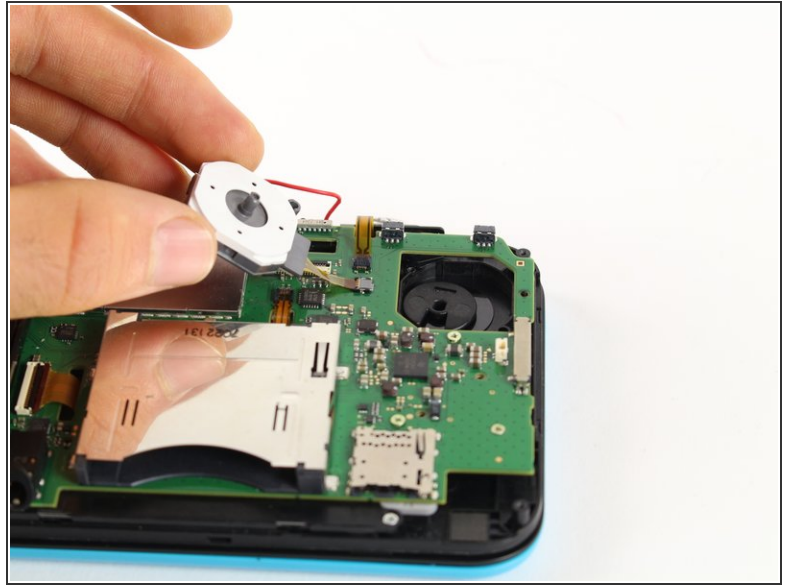
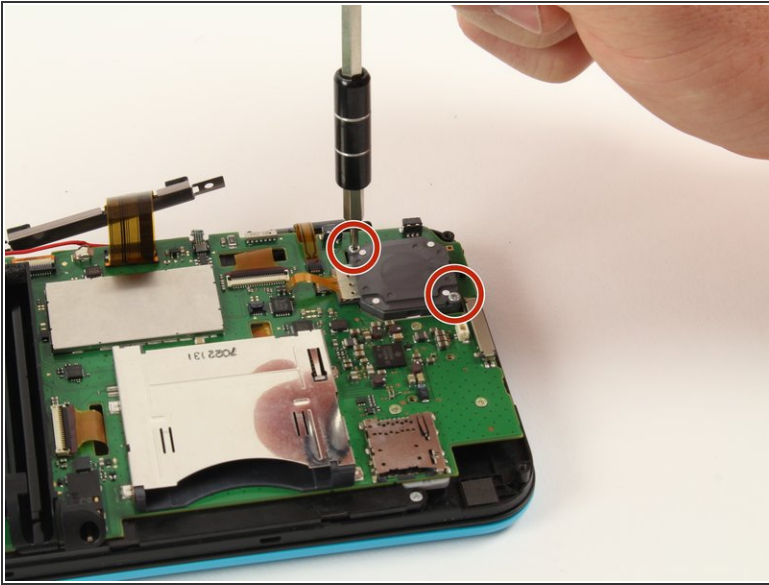
- Using a spudger, lift out the battery.
- Be aware that there is a sticky pad holding the battery into its tray. It may be necessary to use multiple tools to gently pry the battery away from the tray and motherboard.

## Step 6 — Camera Modules



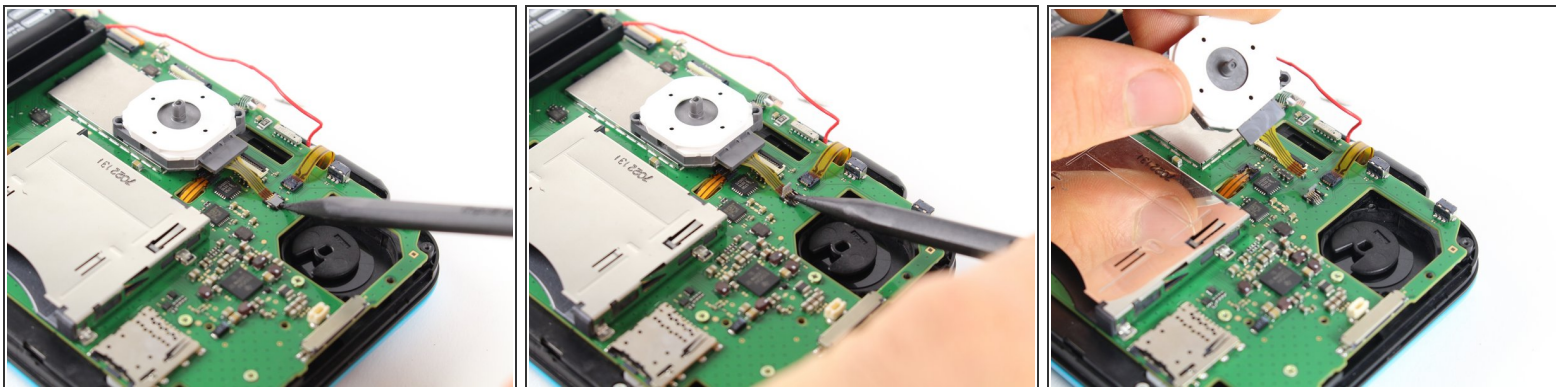
- To more easily access this ribbon cable, flip the device so the back casing faces upwards. Gently slide the back casing forward, revealing the ribbon cable connecting to the motherboard.
- Using a spudger, pry up the ZIF connector holding the ribbon cable.
- Pull the ribbon towards the bottom casing and out of the connector.

## Step 7 — Circle Pad



- Remove the two 7.5mm phillips screws using a PH000 screwdriver.
- Gently flip over the circle pad. Be aware that the pad is pressed into the back of the circle pad on the front of the case. Gentle prying will be necessary to pry it from the back of the circle pad.
- Be aware that there is a black plastic disc that sits between the circle pad module and the circle pad stick. During reassembly, stand the unit on end and hang the plastic disc on the circle pad module and hold the stick from the front to press them back together.

## Step 8



- Using a spudger, lift up the ZIF connector (the hinge is located on the side closest to where the cable connects).
- Remove the circle pad by pulling it away from the connector.

To reassemble your device, follow these instructions in reverse order.