



Xbox One Wireless Controller Model 1708 3.5 mm Audio Port Replacement

The audio port on your Xbox Controller could...

Written By: Dylan Gross



INTRODUCTION

The audio port on your Xbox Controller could have connection issues with audio devices or not provide any sound at all. If this is occurring it might be necessary to replace the 3.5 mm audio port. This guide will teach you how to access and remove the 3.5 mm audio port on your Xbox One Wireless Controller Model 1708.

TOOLS:

[iFixit Opening Tool](#) (1)
[TR9 Torx Security Screwdriver](#) (1)
[Tweezers](#) (1)

PARTS:

[Xbox One/One S Controller \(1697 and 1708\)](#) [Headphone Jack Assembly](#) (1)

Step 1 — Cover Plate



- Slide the battery cover toward the top of the controller to remove it.
- Lift up the batteries or the battery pack from the battery compartment.

Step 2



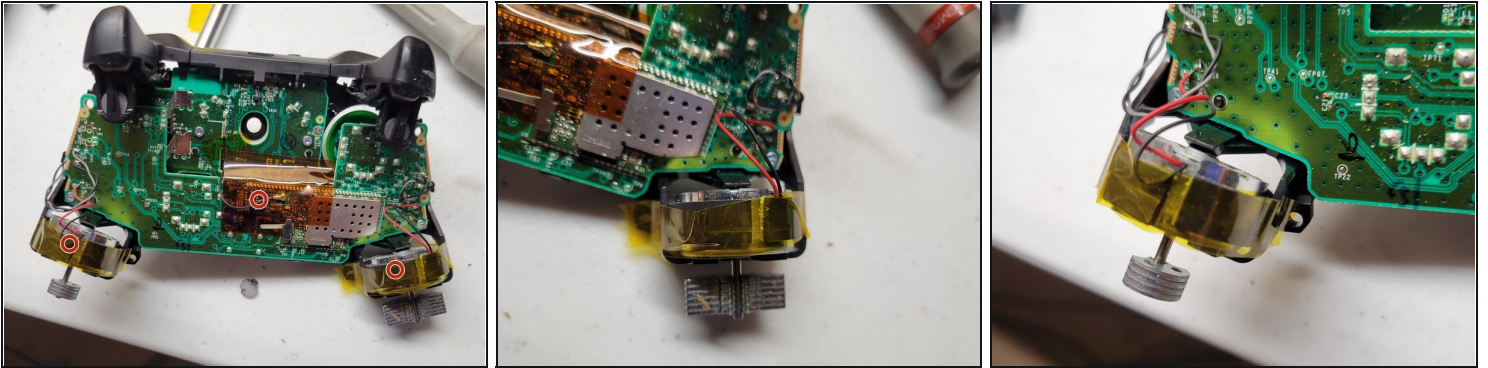
- Insert a plastic opening tool into the top seam, and gently work the opening tool to the bottom of the controller.
- Continue using the opening tool to gently pry the side plate off of the controller.
- Repeat this process for the second side plate.

Step 3



- Gently peel the battery label or punch a hole in the center of the sticker in the battery compartment to reveal the hidden screw.
- Remove the five 9mm torx-9 security screws from the back of the controller.

Step 4 — Tape Shock Motors in place



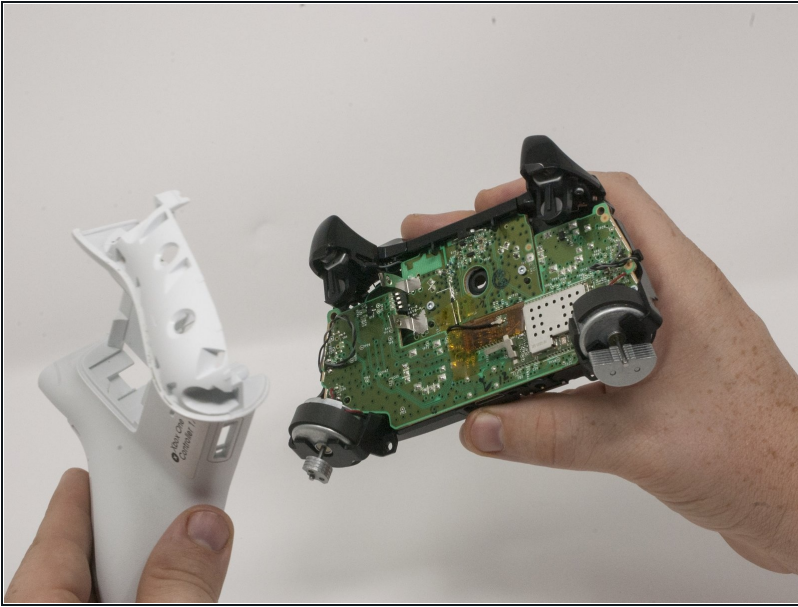
- Tape the Rumbler/shock motors in place.
- This will prevent the motors from falling out.

Step 5



- Orient the controller so the front plate is facing up.
- Lift the front cover off of the controller.

Step 6



- Turn the controller face down and gently lift the rear plate.

⚠ Be careful with the rumble motors, as they tend to fall out, risking damage to the motherboard.

Step 7 — Directional Pad



- Turn the device over and remove the directional pad by gently pulling it away from the controller.

Step 8 — Joystick Caps



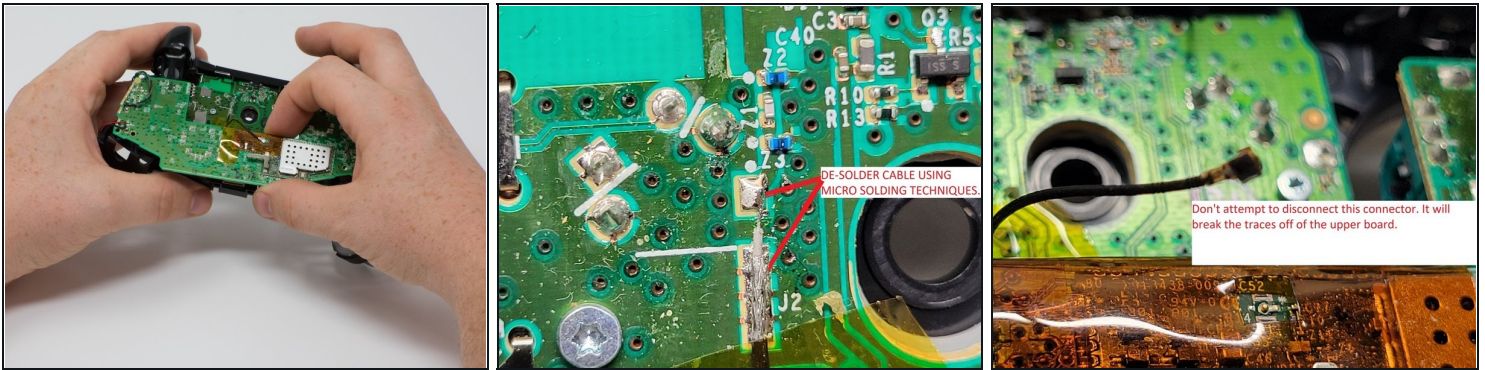
- Pull the joysticks off of the controller.

Step 9 — Top Motherboard



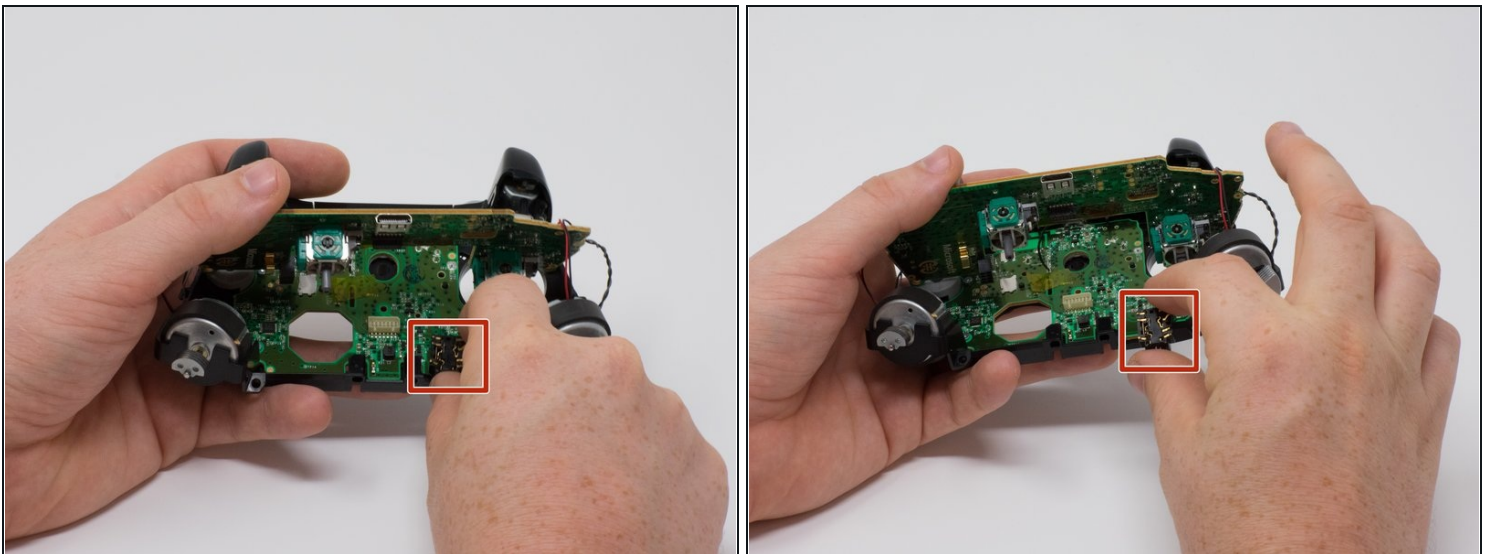
- ⚠ If the rumble motors fall out of frame, the wires may disconnect from the motherboard . The wires will have to be soldered to reattach the motor.
- Turn the device over and remove the two 7mm torx-6 screws in the bottom left and right corners.

Step 10 — De-soldering required



- Firmly grasp the top and bottom motherboards in opposite hands, then gently pull them apart.
- ① The top motherboard is still connected to the bottom motherboard. To fully separate the top motherboard, you will need to use a soldering iron.
- ⚠ **Warning:** Do not attempt to disconnect the shielded (gold colored) connector as it is extremely fragile you will break it. It runs between the two boards.
- ⚠ De-solder the shielded cable from the lower board instead of attempting to disconnect the connector. De-solder using micro soldering technique.

Step 11 — 3.5 mm Audio Port



- Remove the audio port from the bottom mother board.

To reassemble your device, follow these instructions in reverse order.