



Asus MeMO Pad 7 ME176C Motherboard Replacement

How to replace the motherboard on a Asus MeMO Pad 7 ME176C.

Written By: hmedina777



INTRODUCTION

This guide will take you through the necessary steps to replace the motherboard on your Asus MeMO Pad 7 ME176C.





TOOLS:

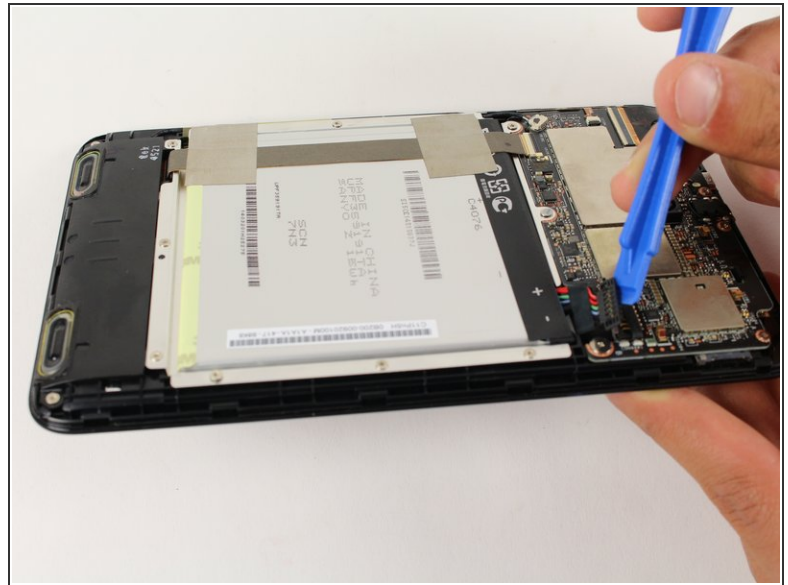
- [Metal Spudger](#) (1)
 - [iFixit Opening Tools](#) (1)
 - [Phillips #000 Screwdriver](#) (1)
 - [Tweezers](#) (1)
-

Step 1 — Motherboard



-  Before taking anything apart, first make sure the device is turned completely off.
-  The device is somewhat fragile so beware not to put too much force on the screen.
- Use a opening tool to pry open the backside cover of the device. Gently pry the backside open all around.

Step 2



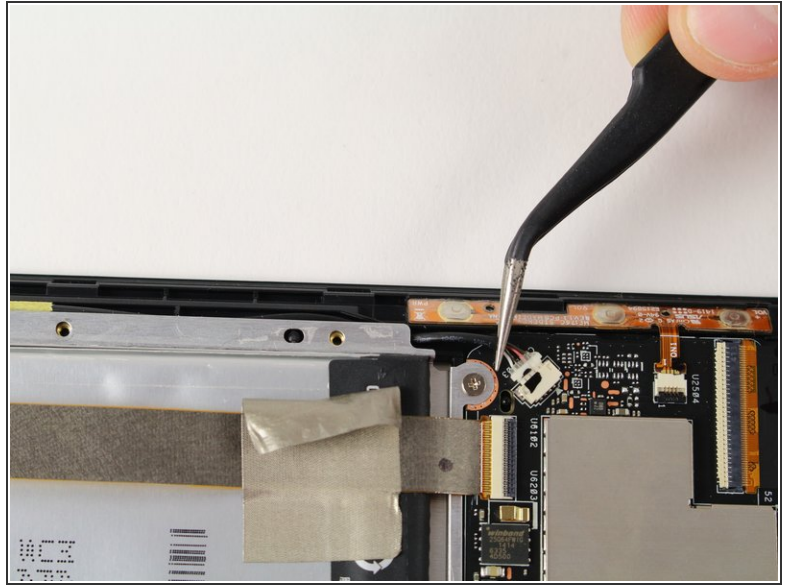
- Locate a black connector that is attached from the battery to the motherboard.
- Gently slide the connector out with the opening tool by pushing it back, to avoid damaging any part.

Step 3



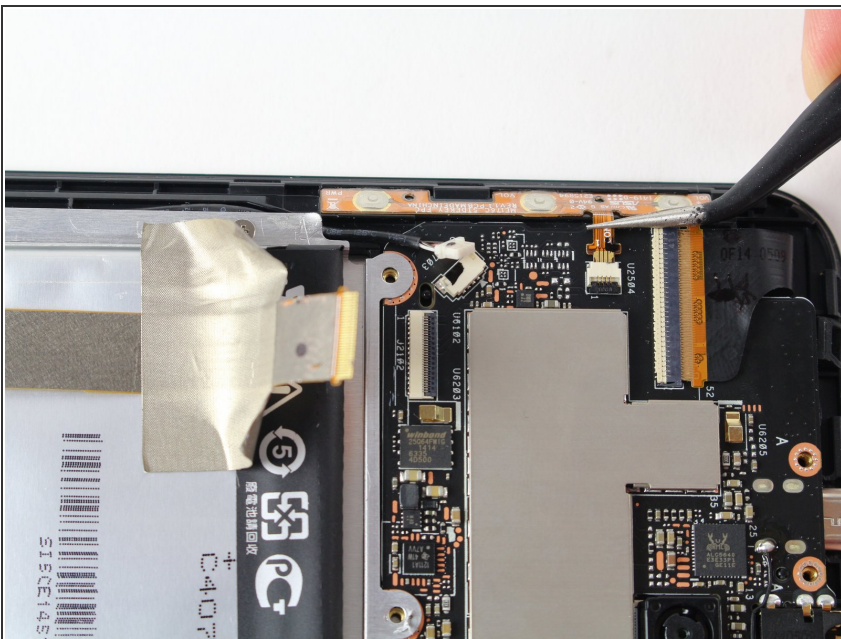
- Locate the battery and area where a strip of wire is connected to the motherboard.
 - Use a nylon spudger or something which you can easily push back and slide the wire out carefully from the motherboard connector.
 - Then peel back the tape connecting the wire to the battery on both ends and lift the wire off the battery.
 - Gently slide a plastic spudger between the battery and the housing to free the adhesive. Work the spudger from side to side to gradually free the battery.
- ⚠ Do not use a metal tool to remove the battery; avoid bending or puncturing the battery during removal.

Step 4



- On the right side of the tablet there is a small black connector.
- Using a small tool, carefully slide back the connector from the motherboard.

Step 5



- On the top right there is a small connector that connects to the motherboard.
- ⚠ This connector is a small wire. Be careful not to damage the wire.
- Using the tweezer tool, carefully slide out the connector from the motherboard.

Step 6



- Next to the previous connector on the top right, there is another large connector.
- Disconnect using a tweezer or a tool to easily slide the connector out.

Step 7



- Locate the screws around the motherboard.
- Unscrew the screws using a Phillips Head Screwdriver PH000 around the motherboard.
- Caution: Carefully place the screws in a safe place as you will need them to put back the motherboard.

Step 8



- On the bottom right of the motherboard, there is a small opening.
- Using a prying tool, gently pop up the motherboard.

To reassemble your device, follow these instructions in reverse order.