

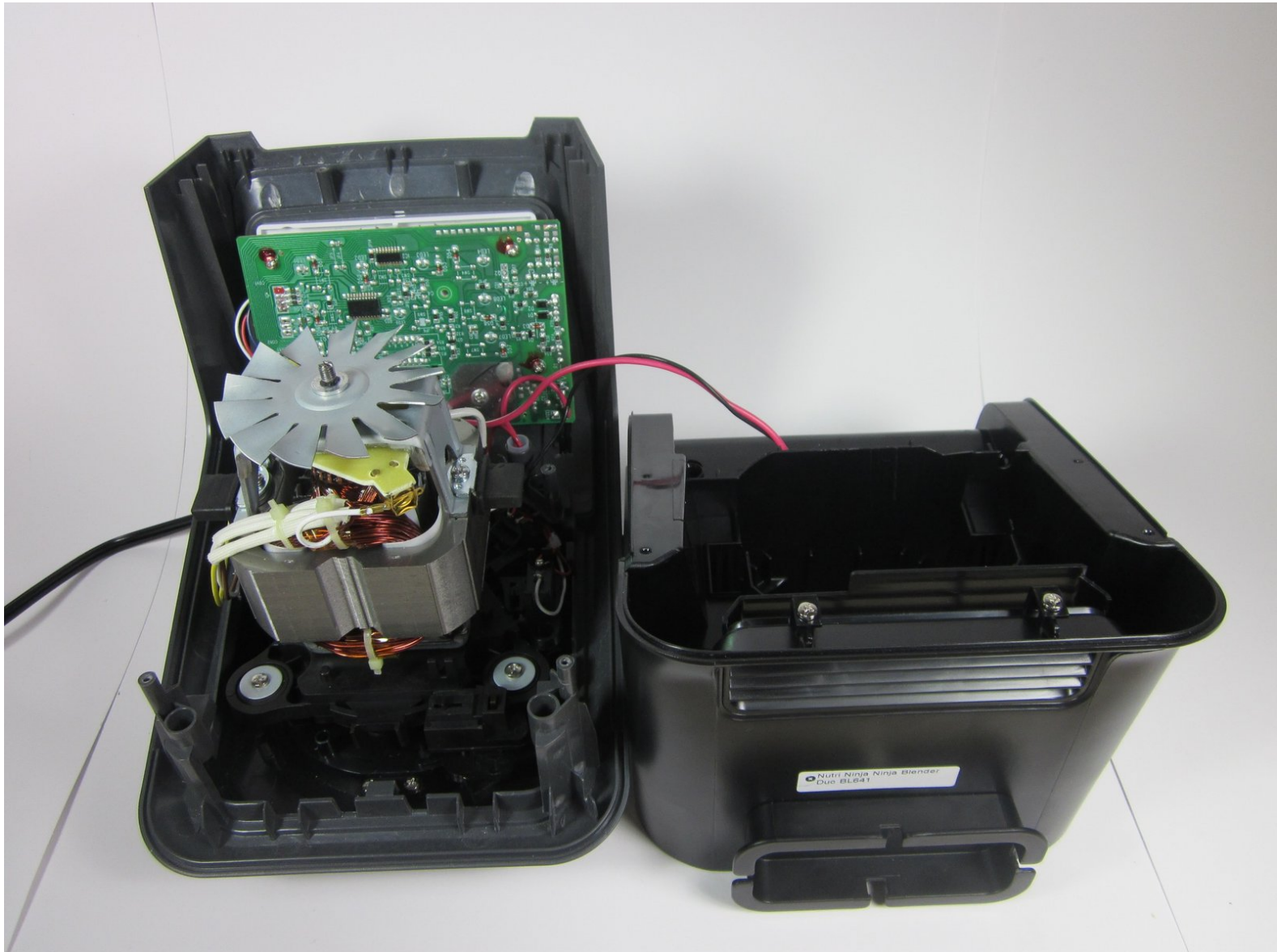


Nutri Ninja Ninja Blender Duo BL641 Body

Disassembly

This shows you how to disassemble the Ninja Duo BL641 blender.

Written By: Nathan



INTRODUCTION

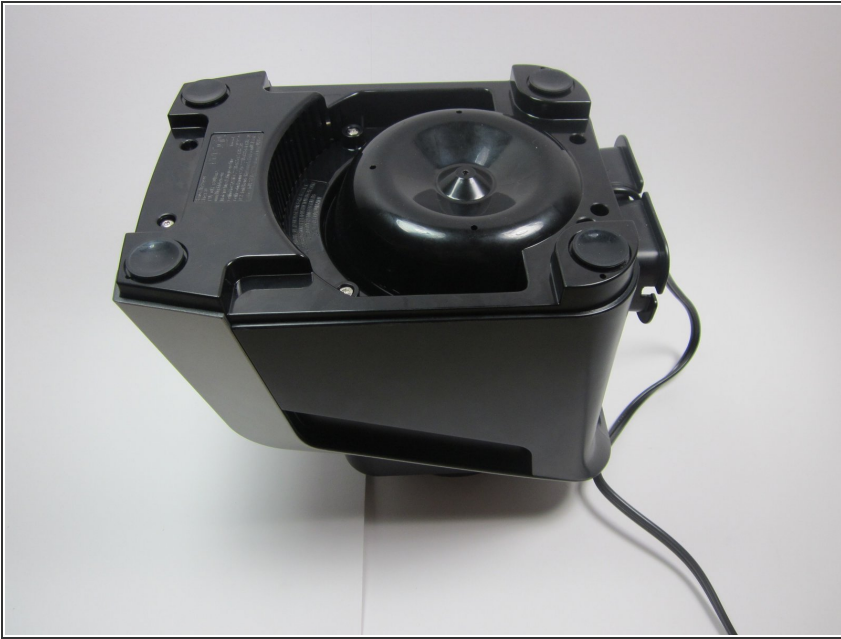
If an internal part is broken you will first need to disassemble the blender.



TOOLS:

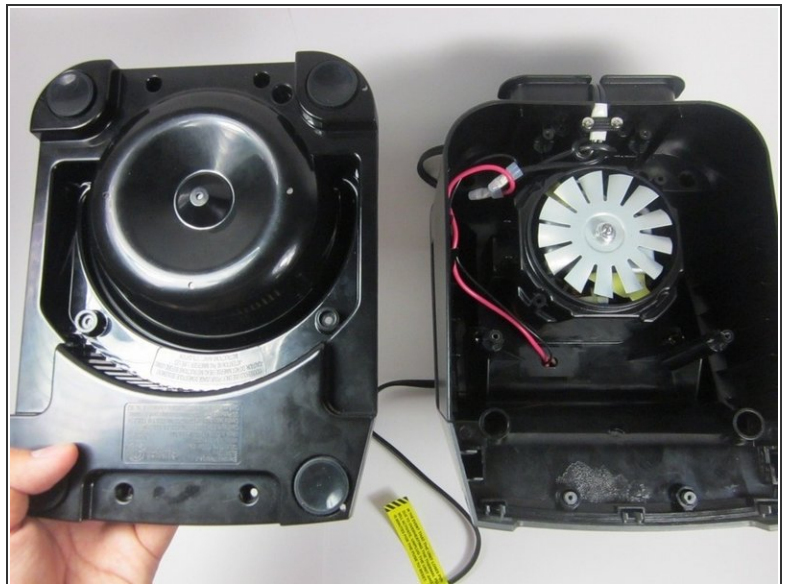
- [Phillips #0 Screwdriver](#) (1)
 - [Star Bit Screwdriver](#) (1)
 - [iFixit Opening Tools](#) (1)
-

Step 1 — Nutri Ninja Ninja Blender Duo BL641 Body Disassembly



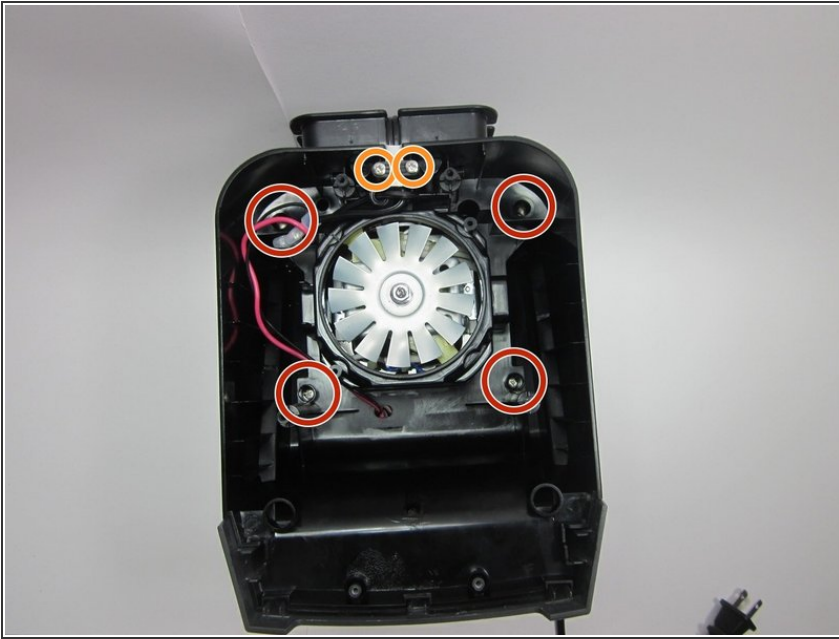
- Turn blender upside down

Step 2



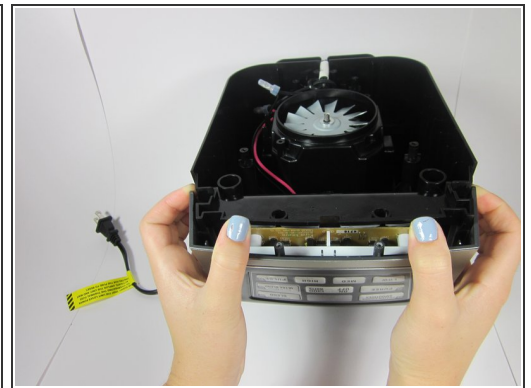
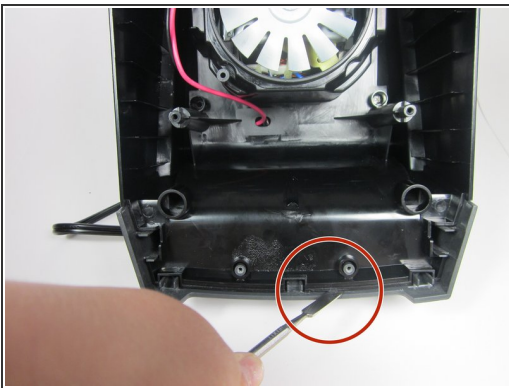
- Remove these six screws (0.5 inch 5 gauge phillip's head)
 - Note: 2 of the screws will be star shaped circled in blue
- Lift the bottom panel off

Step 3



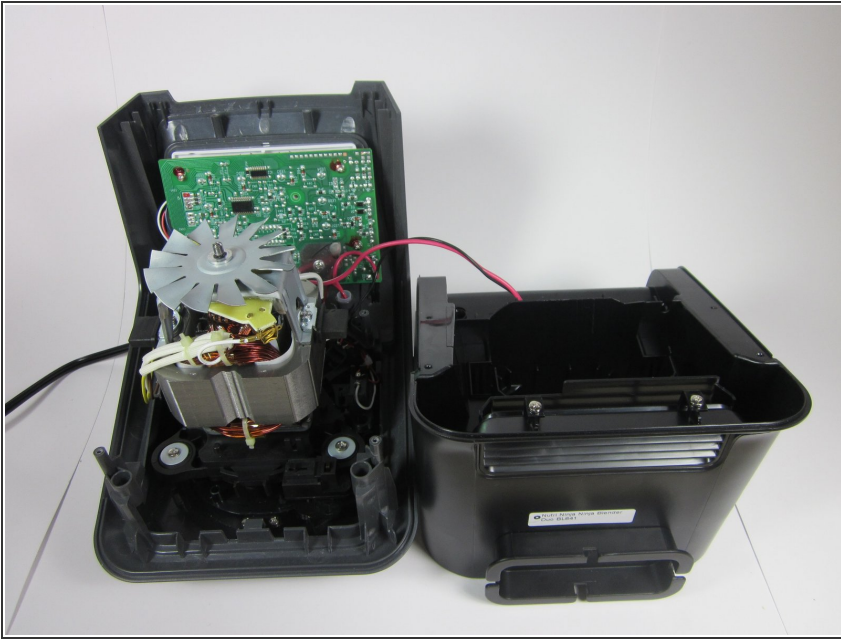
- Unscrew and remove these six phillip's screws. (0.5 inch 5 gauge phillips)
- Note: The screws circled in blue are 1/8" longer and have a slightly different top than the rest. These are the only two screws that are different than the rest.

Step 4



- Insert pry tool in between the two plastic pieces to separate them
- Move pry tool back and forth from right to left until the two pieces begin to separate as shown.
- Pry the two pieces apart with your hands as shown in the picture to finish separating the pieces.

Step 5



- This completes the disassembly of the main body of the blender so you can continue to perform replacements on the internal parts.

To reassemble your device, follow these instructions in reverse order.