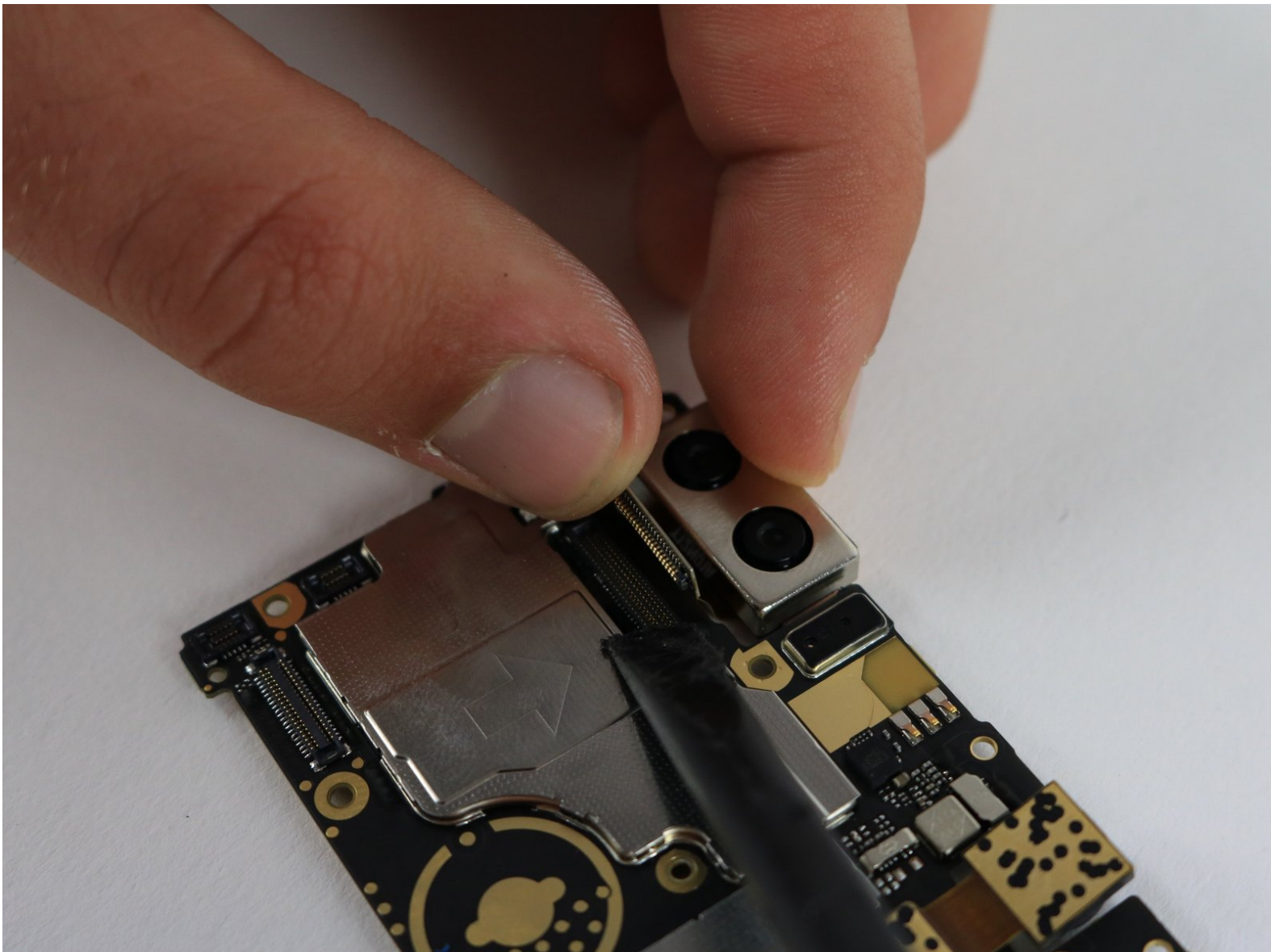




# Huawei Honor 8 Rear Facing Camera Replacement

This guide will show step by step instructions for replacing the rear facing camera on the Huawei Honor 8.

Written By: Jaret Wedow



# INTRODUCTION

This guide details how to remove the rear facing camera from the Huawei Honor 8.



## TOOLS:

- [Phillips #000 Screwdriver](#) (1)
- [Spudger](#) (1)
- [SIM Card Eject Tool](#) (1)
- [iFixit Opening Tools](#) (2)
- [Heat Gun](#) (1)



## PARTS:

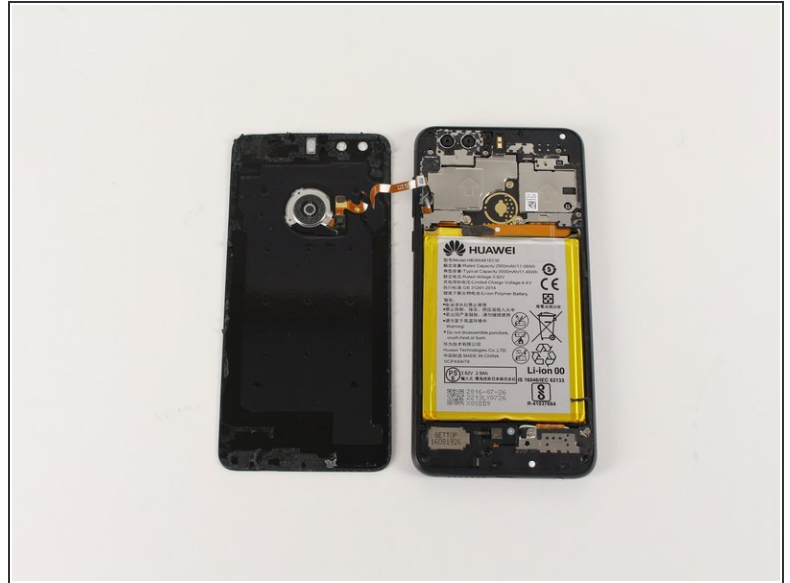
- [Huawei Honor 8 Dual Rear Cameras](#) (1)

## Step 1 — Rear Glass & Frame




- ⚠ Make sure you spend at least 5 minutes heating up the adhesive. Prying off the glass cover too early can result in cracking the panel.
- Using a heat gun or hairdryer, apply heat approximately three inches above the glass panel to warm up the adhesive around the outside edge of the phone.
- ⓘ Make sure to apply heat evenly across the outside edge of the device.

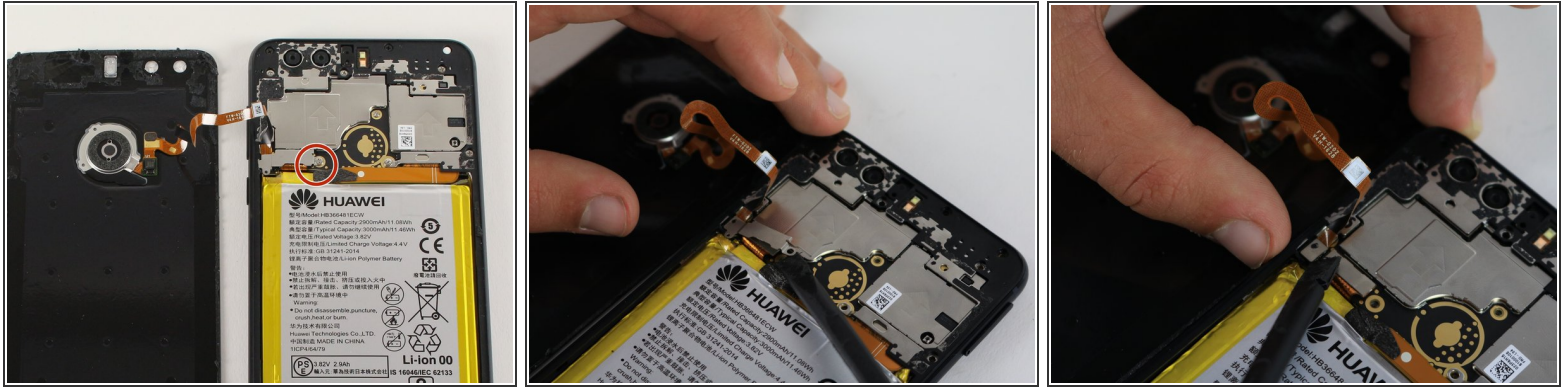
## Step 2



 Be careful not to tear the orange ribbon wire when removing the back panel.

- Using a plastic opening tool, gently pry up a corner of the rear glass panel.
- Slowly slide the plastic opening tool around the outside of the glass panel to break through the adhesive.
-  Additional plastic opening tools can be used to help separate the back panel from the phone body.
- Gently lift the back panel off once all the adhesive has been removed.

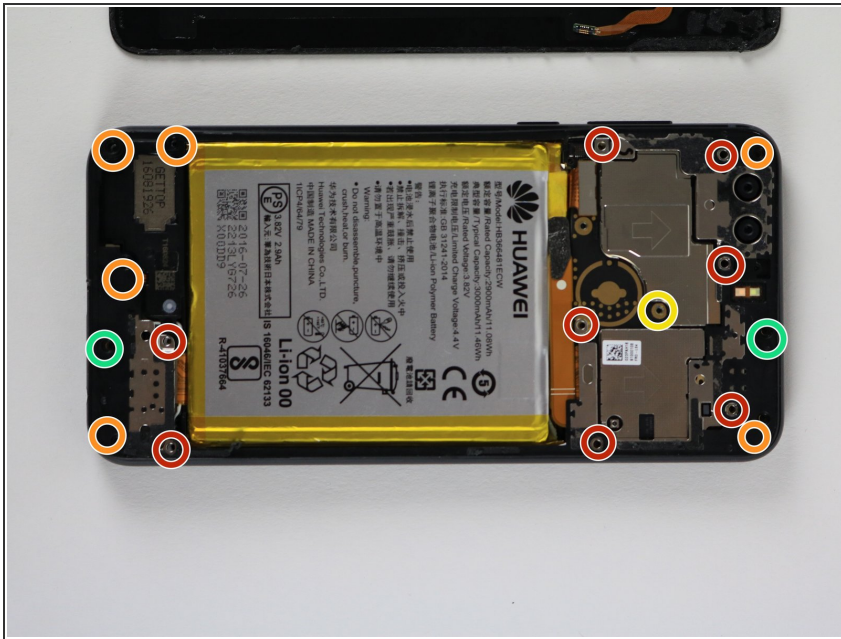
## Step 3



- Using a Phillips PH00 screwdriver, remove the silver Phillips 3.5 mm screw circled in red.
- Using a spudger, gently lift off the small metal tab that was held in place by the screw.
- Gently pry off the orange ribbon wire on the back panel.



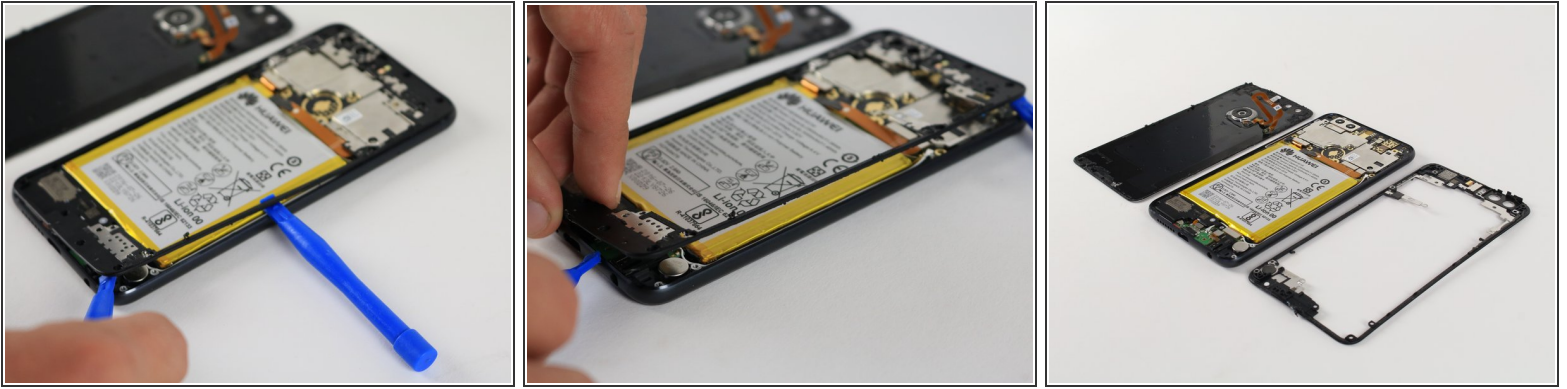
## Step 4



**i** Keep the tiny screws on a magnetic pad or a designated area so they will not be lost. There are eighteen screws in total.

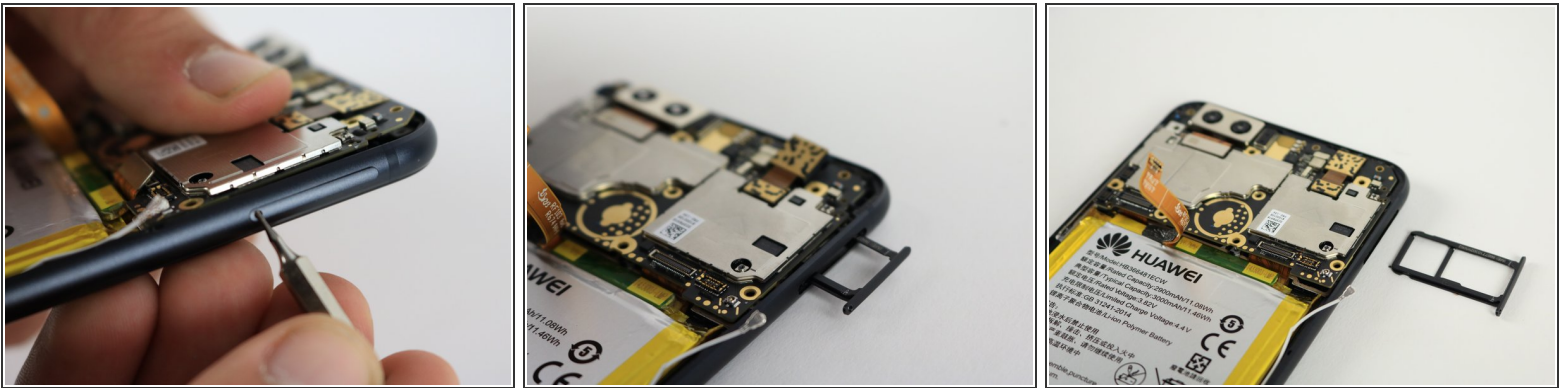
- Using a Phillips PH00 screwdriver, remove the eight silver Phillips 3.5 mm screws circled in red.
- Using a Phillips PH00 screwdriver, remove the six black Phillips 4.0 mm screws circled in orange.
- Using a Phillips PH00 screwdriver, remove the single silver 3.0 mm Phillips screw circled in yellow.
- Using the Phillips PH00 screwdriver tip, gently scratch away the white stickers outlined in green circles to expose hidden screws.
- Using a Phillips PH00 screwdriver, remove the two black Phillips 4.0 mm screws circled in green.

## Step 5



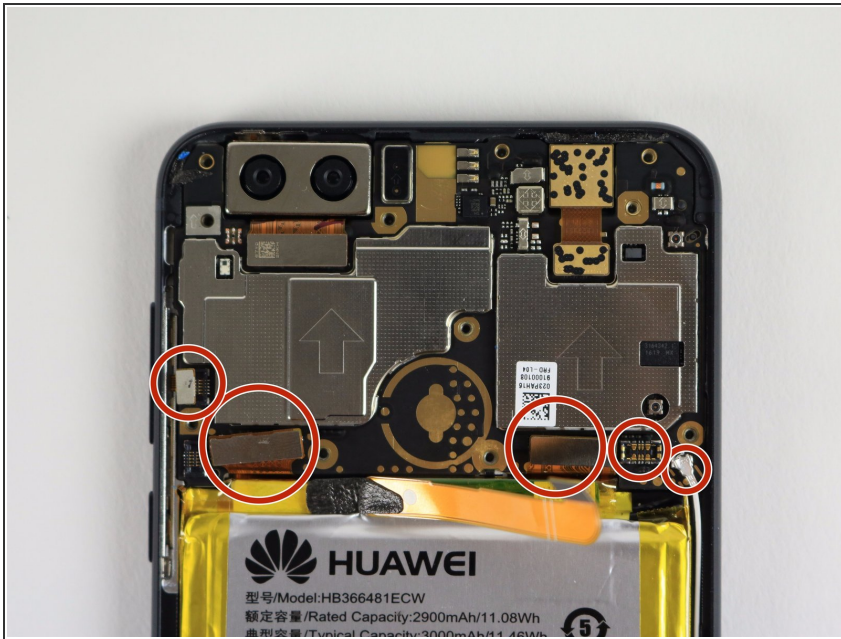
- Slowly slide the plastic opening tool around the perimeter of the inner lining.
- ① Additional plastic opening tools can be used to help separate the inner lining from the phone body.
- Gently pull the inner lining up to remove it from the phone body.

## Step 6 — Motherboard



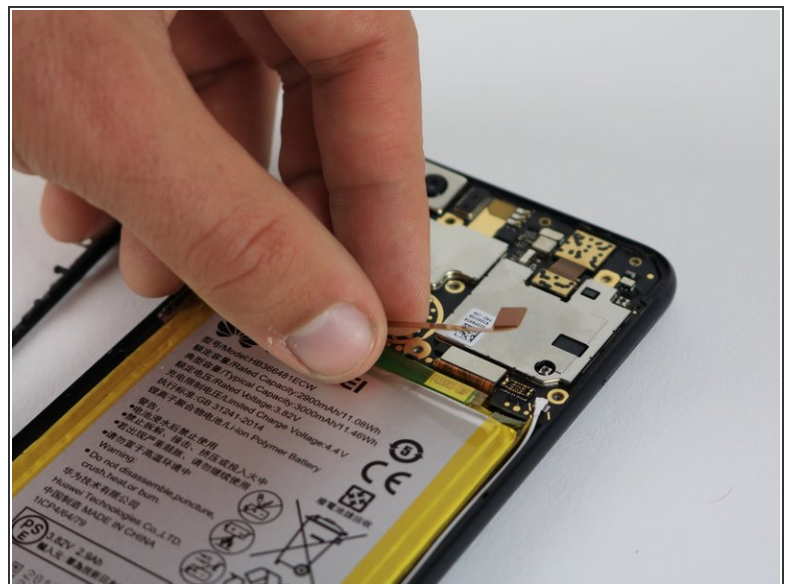
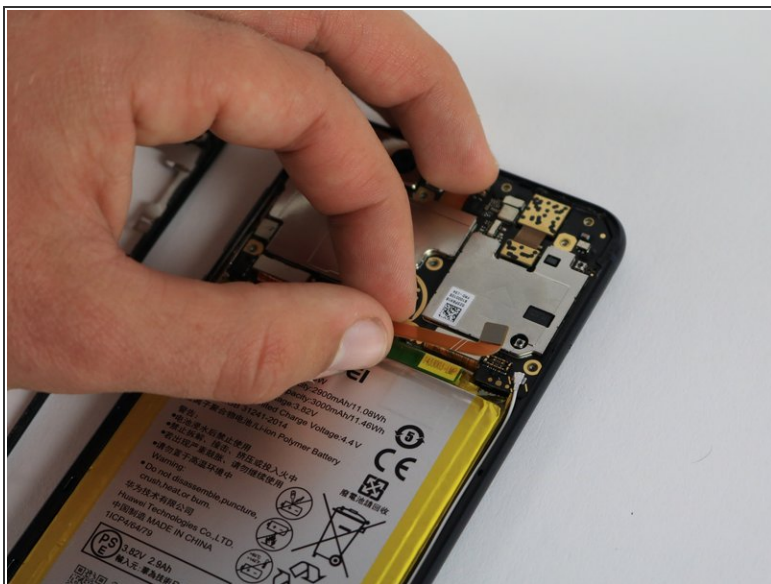
- Holding the phone so that the cameras are at the top, locate the small hole on the top right edge of the device.
- Using the 0.8 mm Sim Eject tool, push down on the small hole to release the Sim Card tray.
- Gently pull out the Sim Card tray and set it aside.

## Step 7




- In the following steps you will disconnect the five connectors circled in red holding the motherboard in place.

## Step 8

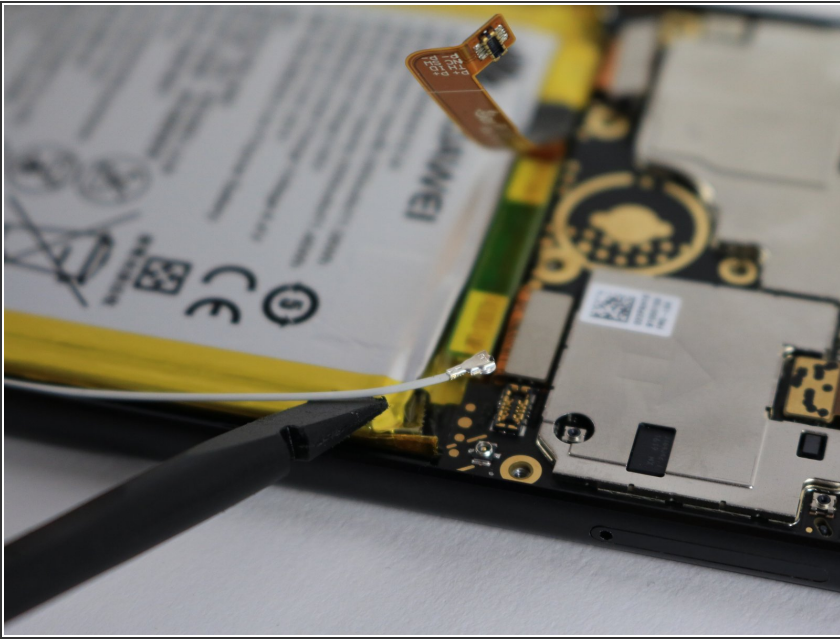


- Gently pull the small ribbon connection between the battery and motherboard upward to disconnect it.

 Use a spudger to help pry off the connection if necessary.

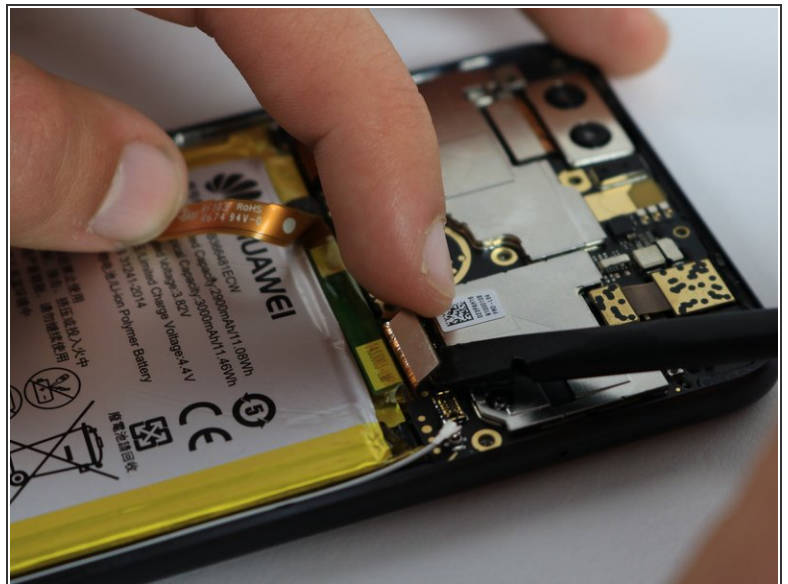


## Step 9



- Use a spudger to gently pry off the small antenna cable on the right side of the motherboard.

## Step 10



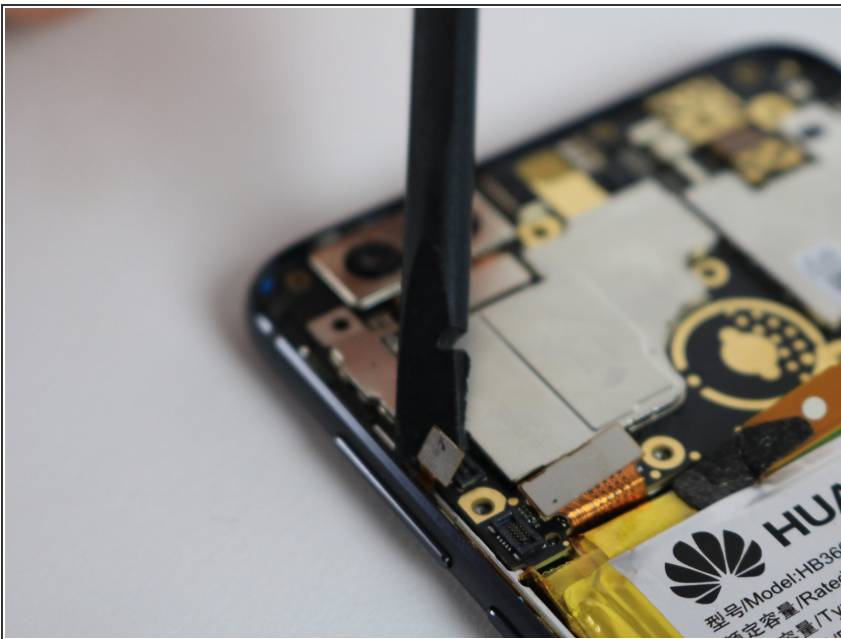
- Using a spudger, gently pry up the small connection that holds the motherboard in place.

## Step 11



- Using a spudger, gently pry up the connector near the left edge of the motherboard.

## Step 12



- Use a spudger to gently pry off the small connection on the far left edge of the motherboard.

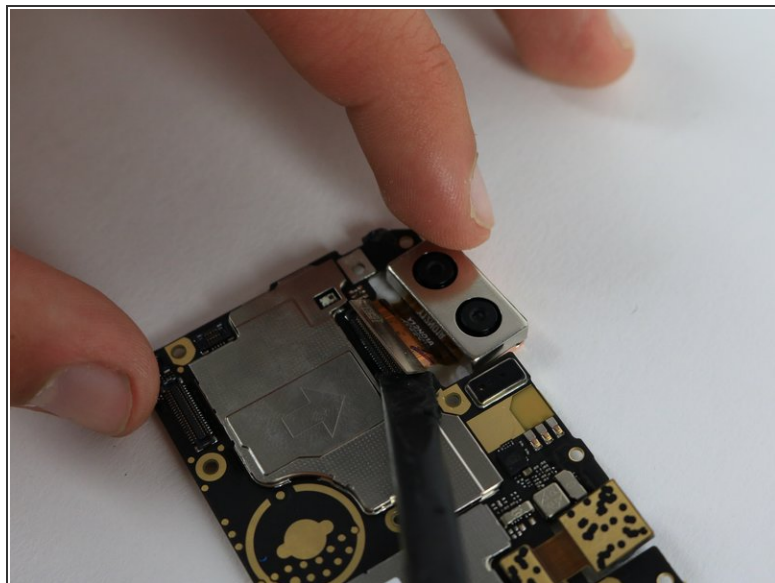
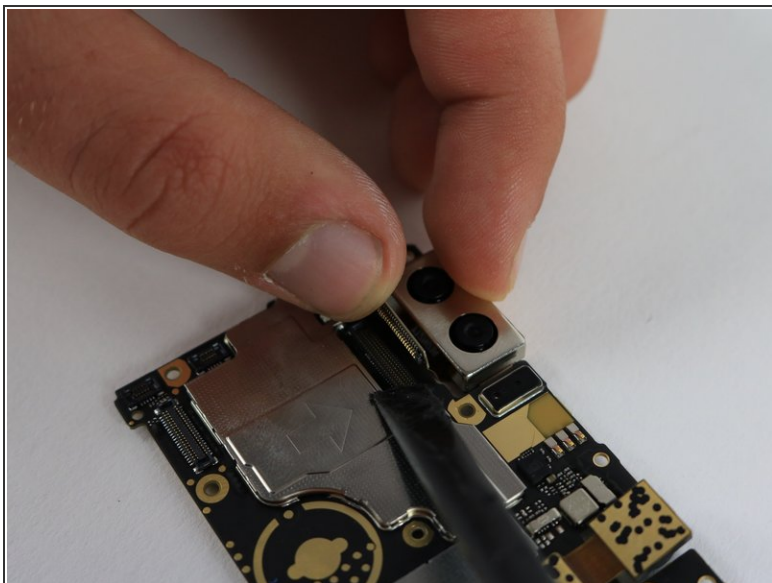
## Step 13



- Use a spudger to pry up a corner of the motherboard.
- Lift the motherboard to remove it from the body of the phone.



## Step 14 — Rear Facing Camera



- Using a spudger, gently pry off the connection between the dual rear cameras and the motherboard.
- Lift the cameras away from the motherboard.

To reassemble your device, follow these instructions in reverse order.