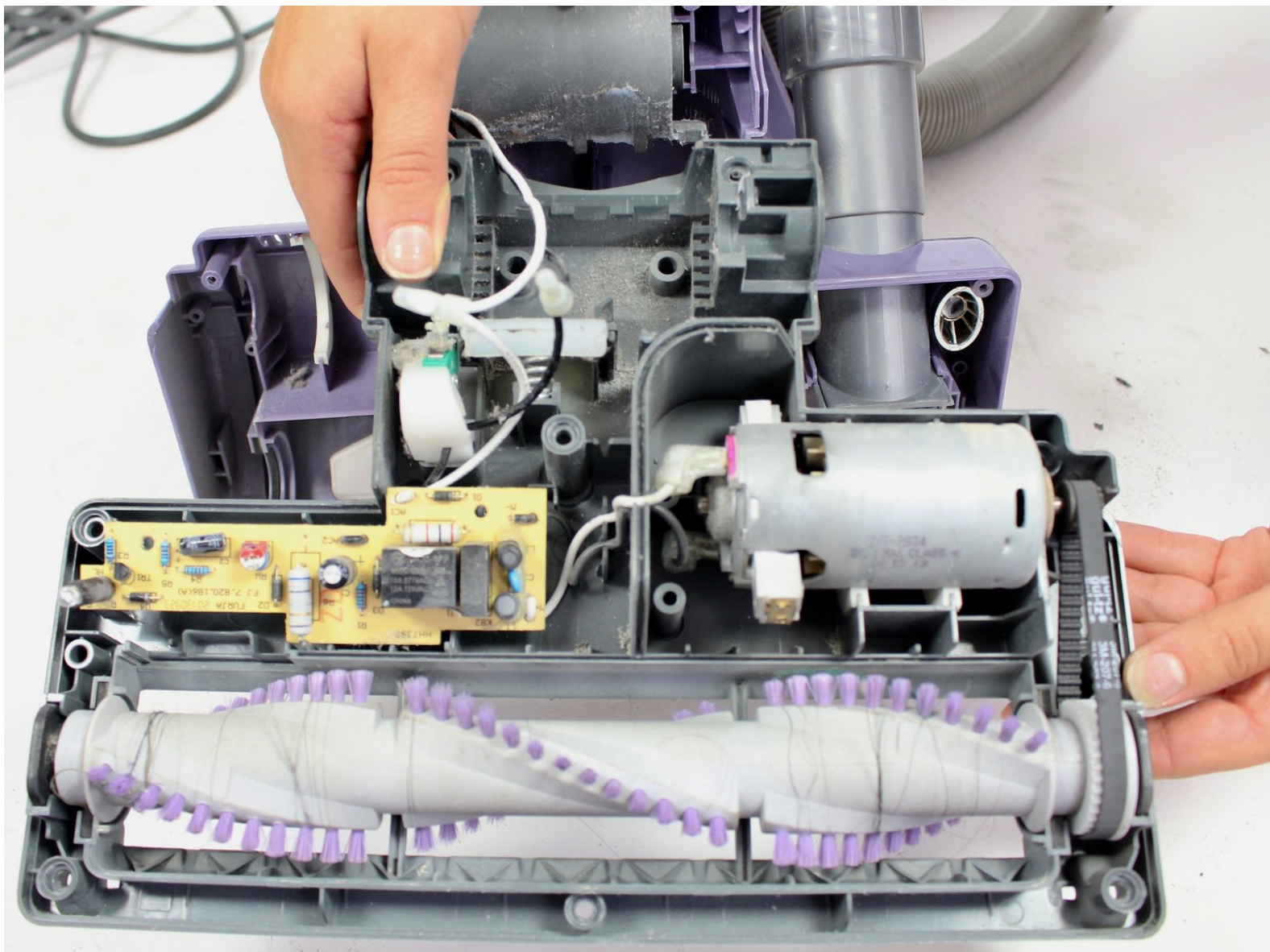




Shark NV352 Motherboard Replacement

This guide will show how to remove the motherboard from the vacuum.

Written By: Wesley T Benica



INTRODUCTION

The motherboard controls the power to the vacuum. If your vacuum is not turning on, your motherboard may need to be replaced. Follow these instructions to access the motherboard for replacement.

TOOLS:

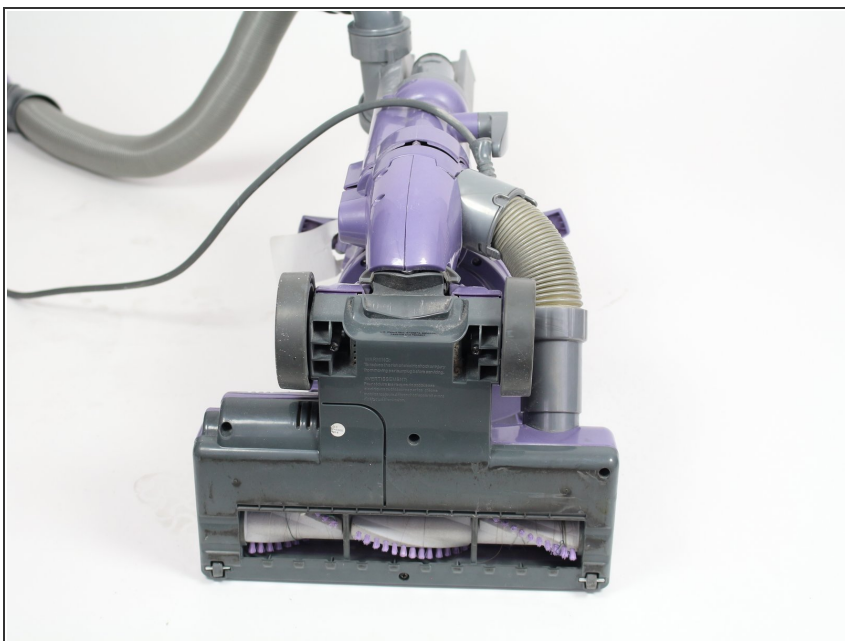
- [Phillips #2 Screwdriver](#) (1)
 - [Metal Spudger](#) (1)
 - [Soldering Iron](#) (1)
-

Step 1 — Roller Brush



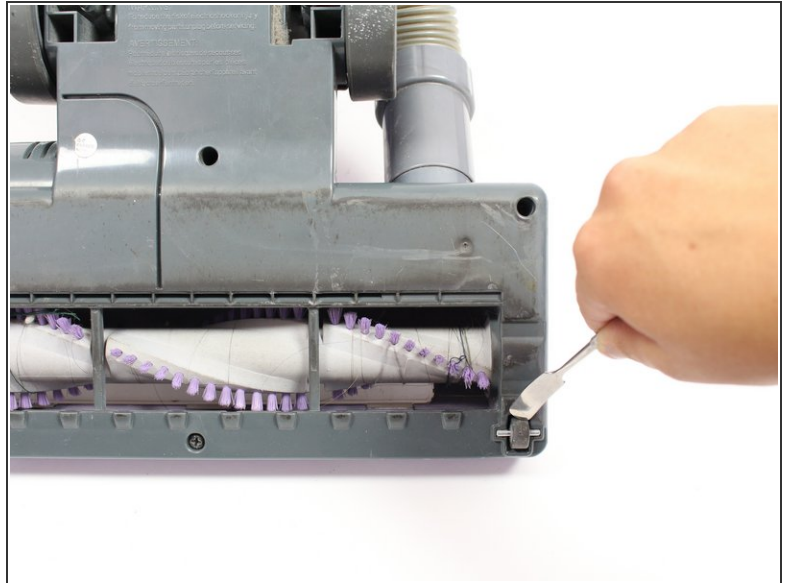
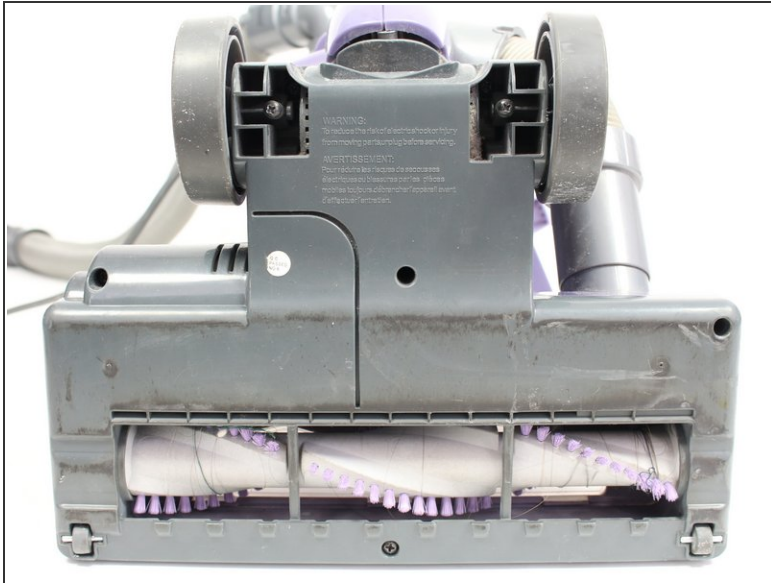
- Lift the latches on both sides of the vacuum to release the dust canister.
- Remove the dust canister from the vacuum by lifting it up.

Step 2



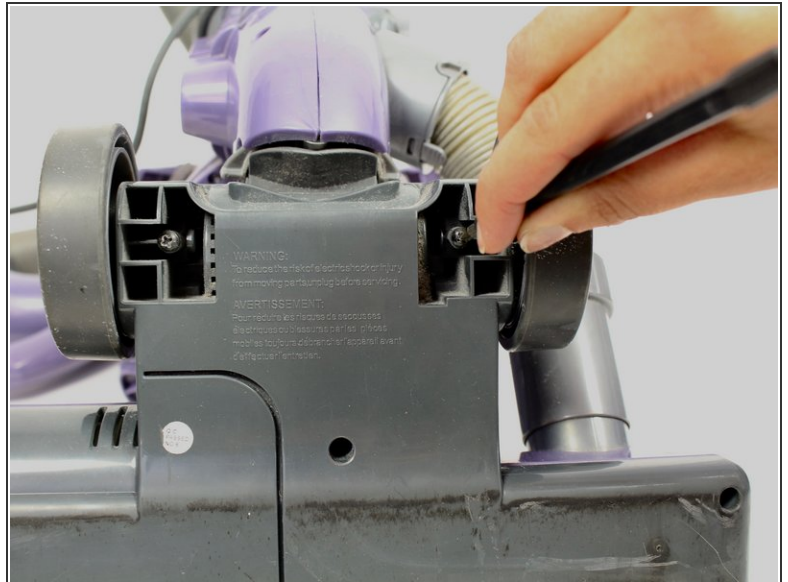
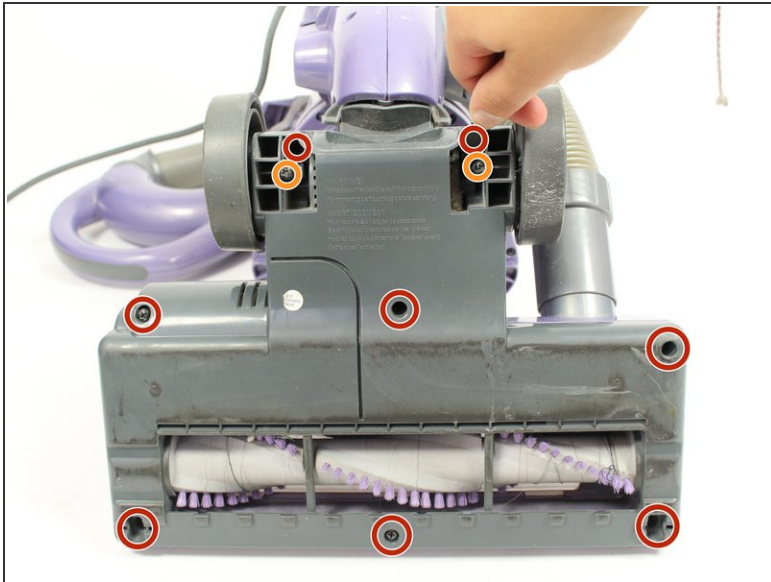
- Lay down the vacuum to access the bottom panel of the roller brush compartment.

Step 3



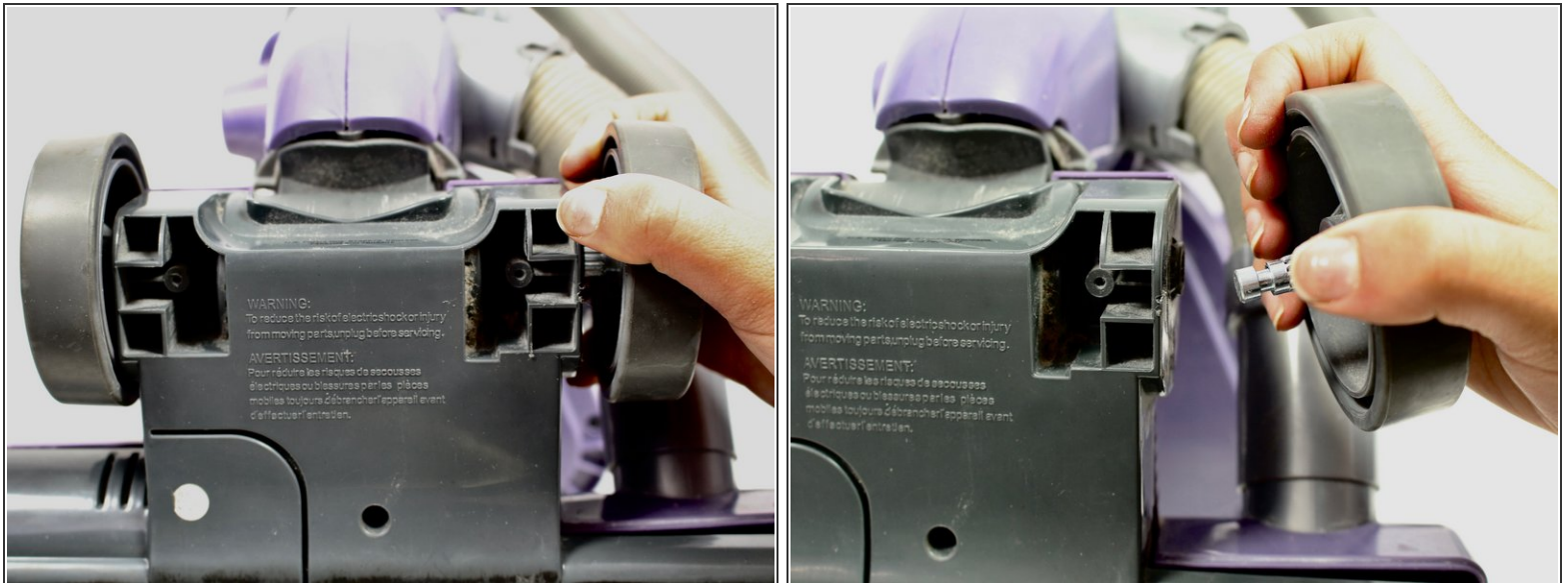
- Using the metal spudger, pry the two small wheels located at the two bottom corners of the vacuum to remove them.

Step 4



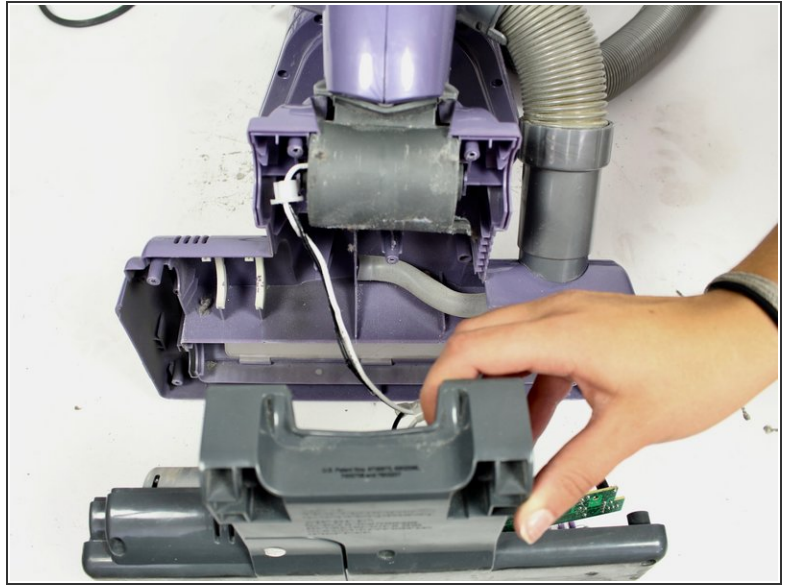
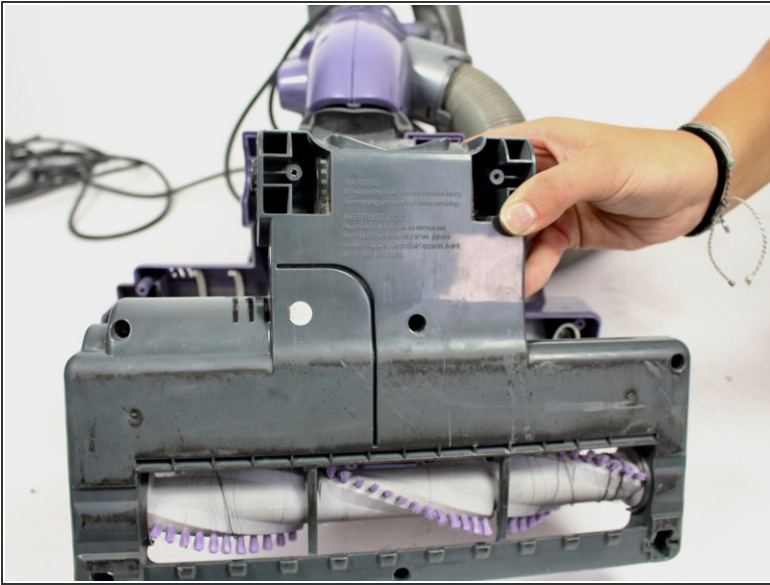
- Remove the eight 19mm Phillips #2 screws from the plastic cover.
- Remove the two 14 mm Phillips #2 screws from the upper section of the plastic cover.


Step 5



- i** You will need to apply a strong force while pulling the wheels off because they are attached very tightly.
- Remove the wheels by pulling them out of their axles, away from the vacuum.

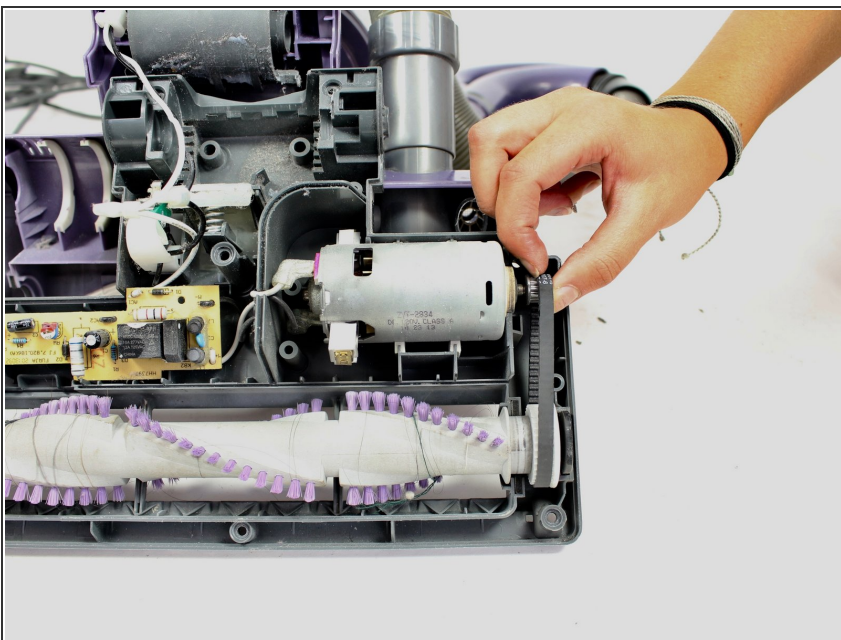
Step 6



 Perform the next step slowly and carefully so the wiring connecting the motherboard to the rest of the vacuum is not broken.

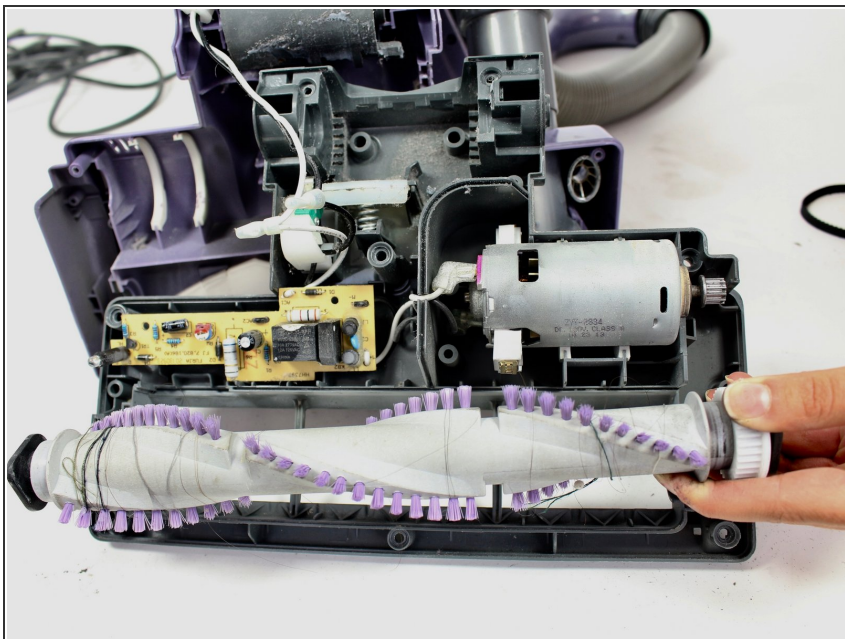
- Gently pull the grey lower part of the roller brush compartment away from the purple upper part of the compartment.

Step 7



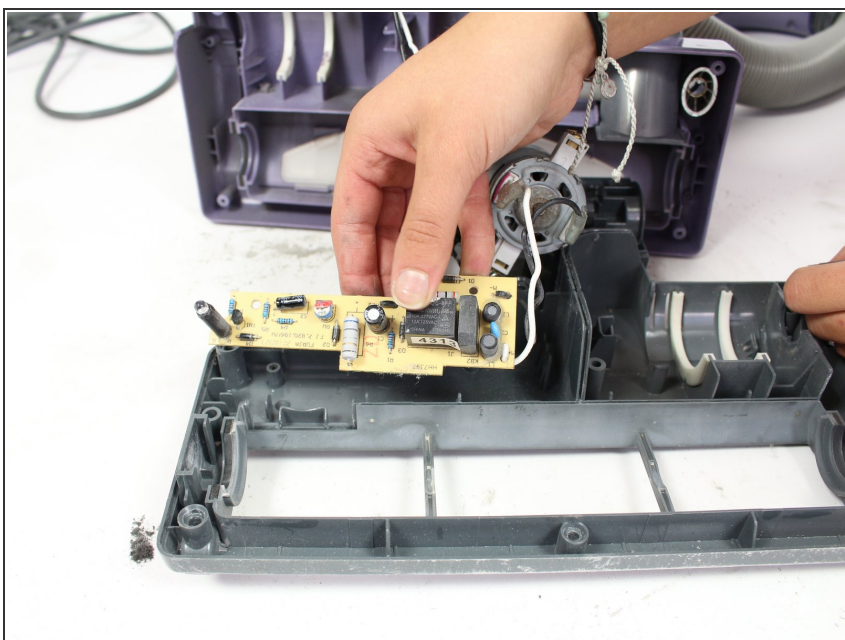
- Lift up and then pull the roller belt off of the roller brush and the motor to remove it.

Step 8



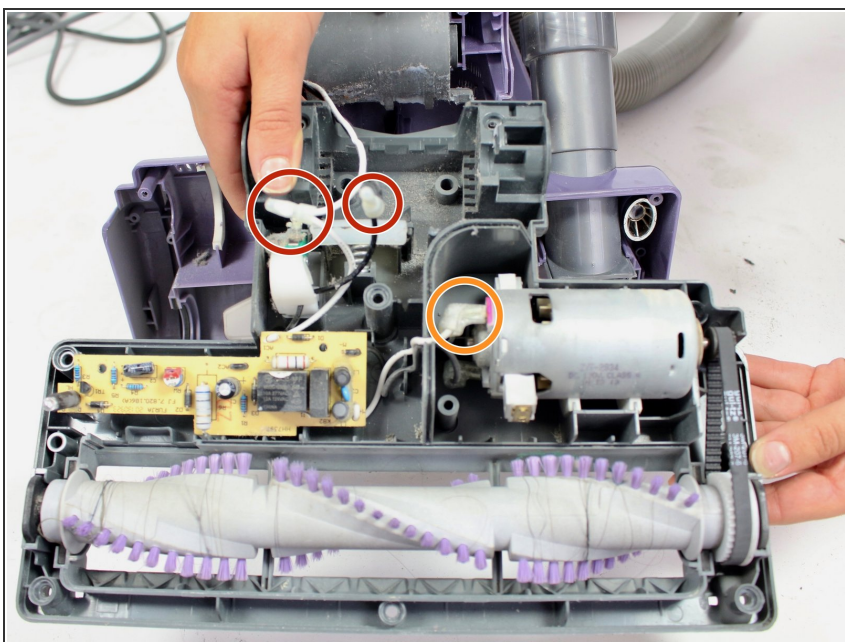
- Take out the roller brush by lifting it out of its tray.

Step 9 — Motherboard



- ⚠ The capacitors on the motherboard may still hold a residual charge, so avoid touching them because there is a risk of getting shocked.
- ⚠ Remove the motherboard carefully so you don't cause damage by pulling the wires connected to it.
- Lift the motherboard out of the plastic tray to remove it.

Step 10



- Disconnect the wires connecting the motherboard to the vacuum by unscrewing the twist-on wire connectors.
- Desolder the wires connecting the motherboard to the motor. Get tips on how to desolder by checking out [How to Solder and Desolder](#).

To reassemble your device, follow these instructions in reverse order.