



Nutri Ninja Ninja Blender Duo BL641 Suction Cups Replacement

Suctions cups at the bottom of the base can...

Written By: Brian Pham



INTRODUCTION

Suctions cups at the bottom of the base can deteriorate over time. This guide will demonstrate how to replace them.

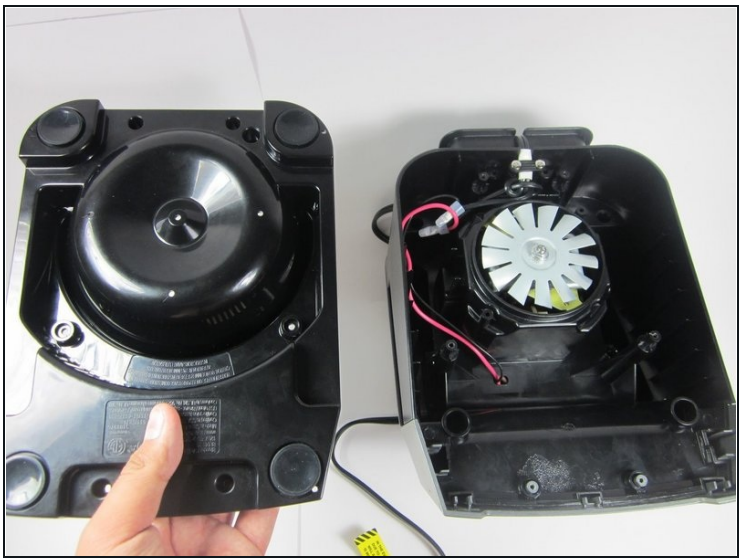
TOOLS:

Phillips #0 Screwdriver (1)
TR8 Torx Security Screwdriver (1)

PARTS:

Suction cup (1)

Step 1 — Suction Cups



- Turn the blender upside down.
- Remove the six screws securing the bottom panel to the base of the blender:
 - Four 0.5 inch 5 gauge Phillips screws
 - Two [TR8 Torx security screws](#)
- Lift the bottom off of the base.

Step 2



- Pull the damaged suction cup off of its pit.

To reassemble your device, follow these instructions in reverse order.