



Logitech Harmony 950 Case Replacement

This guide will involve using basic tools to...

Written By: Shiba Kandel



INTRODUCTION

This guide will involve using basic tools to replace the case of the Logitech Harmony 950.



TOOLS:

- [iFixit Opening Tool](#) (1)
 - [Phillips #0 Screwdriver](#) (1)
 - [Tweezers](#) (1)
 - [ESD Safe Tweezers Blunt Nose](#) (1)
-

Step 1 — Battery



- ⓘ Make sure the remote control is powered off before starting.
- Use the Opening Tool to open the port cover at the bottom of the remote control.
- Bend the cover back to gain easy access to the screws.

Step 2



- Use the Phillips #0 Screwdriver to remove the (2) two 6mm screws.
- Pull the bottom cover off of the remote control.

Step 3



- Use the Phillips #1 Screwdriver to remove the (2) two 6mm screws.
- There should be a gap on each side to fit the Opening Tool. Use the Opening Tool to open the back cover (Soft Touch cover) using the gap.

Step 4



- Use the Opening Tool to lift the battery out of the case.
- Gently pull the cable out of the socket to unplug the battery.

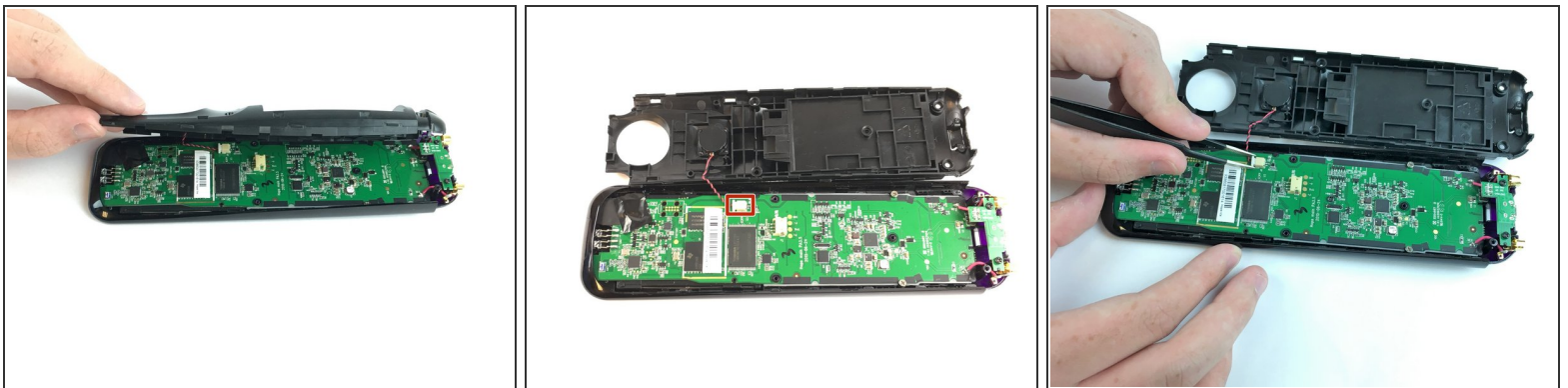
⚠ Be careful not to damage any part of the remote when pulling the cable out.

Step 5 — Case



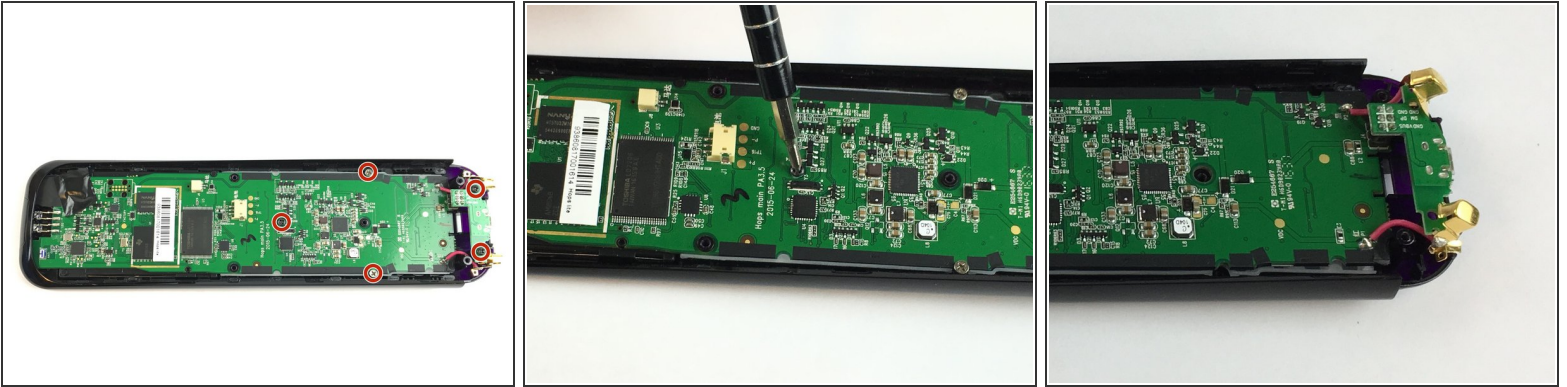
- Use the Phillips #1 screwdriver to remove the (3) three 6mm screws.
 - Push the opening tool into the gap along the side of the remote, then slide it across until you hear clicking sounds.
- i** You need to repeat this process for both sides of the remote.

Step 6



- !** Carefully remove the back cover and place it next to the remote. Be careful not to detach the wire during this process.
- Use the Angled Tweezers to carefully pull the white cable end off of the remote and disconnect it.

Step 7



- Use the Phillips #0 screwdriver to remove the (5) five 6mm screws. Keep in mind that once the screws are off, the circuit board will be completely separate from the case.

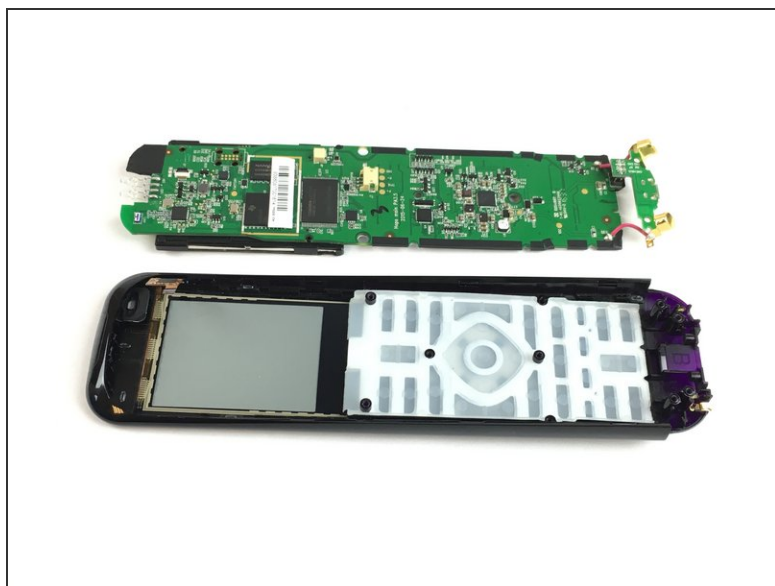
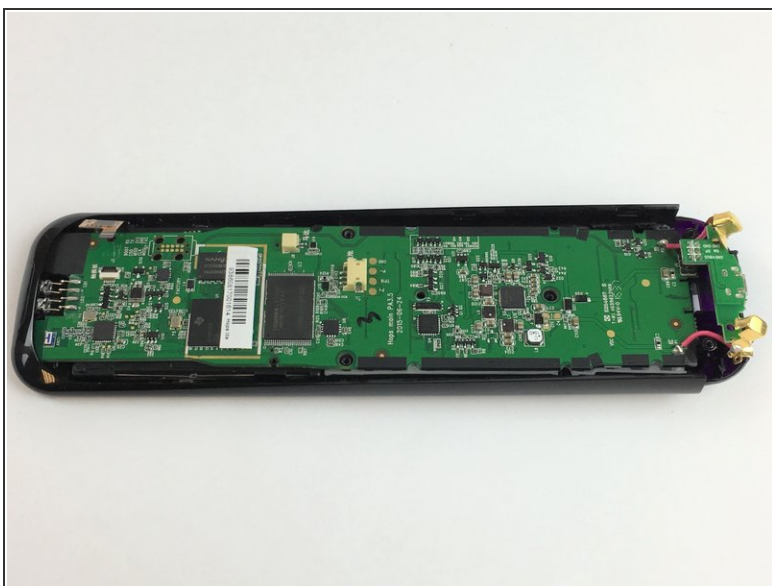
⚠ Be careful not to damage or disconnect the pink wires when removing the gold charging conductors from the case.

Step 8



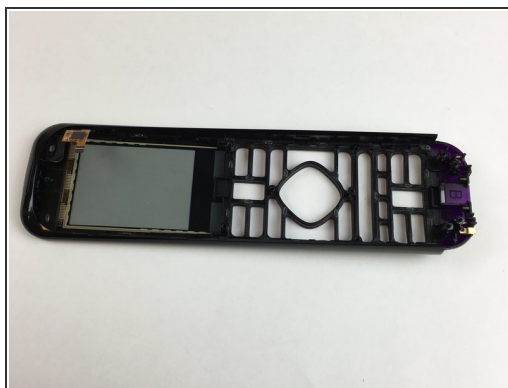
- Remove the black tape to fully access the cable underneath.
- This cable has a locking mechanism. Use the Angled Tweezers to lift the black part (lock).
- Slide the yellow cable to disconnect it from the circuit board.

Step 9



- Pull the circuit board off of the case. Start from the bottom, and lift up to completely detach it from the cover.

Step 10



- Use the Blunt Tweezers to carefully remove the keypad from the cover of the remote.

To reassemble your device, follow these instructions in reverse order.