



Hoover Windtunnel Air Steerable Upright Brush Roll Replacement

The guide will explain how to replace the brush roll.

Written By: Sangmin Jung



INTRODUCTION

Bristle on the brush roll being worn out or damaged plastic bearing cap prevents the brush roll from spinning properly. This page will guide you on how to open up the bottom plate and replace the brush roll



TOOLS:

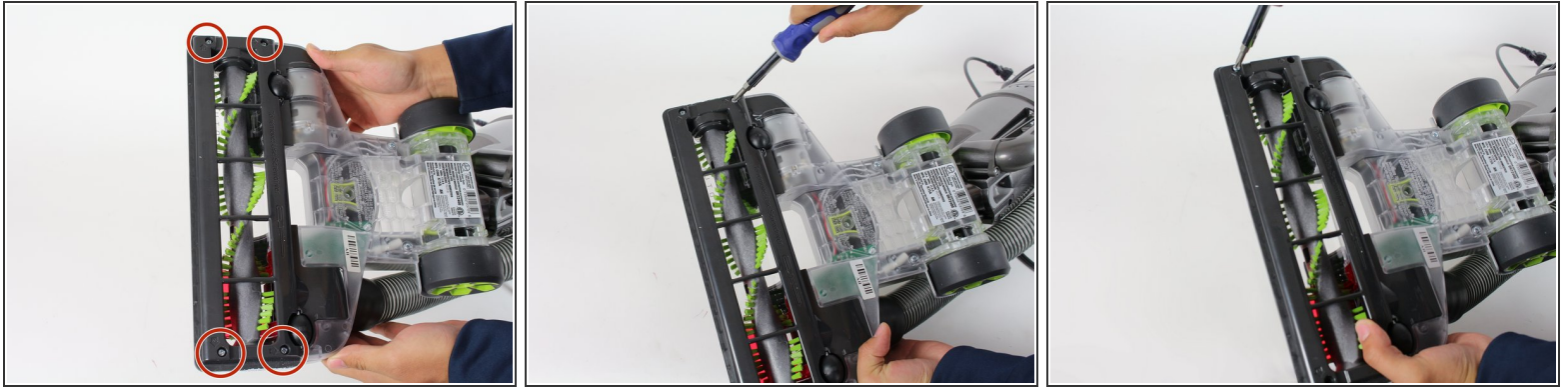
- [Phillips #3 Screwdriver](#) (1)



PARTS:

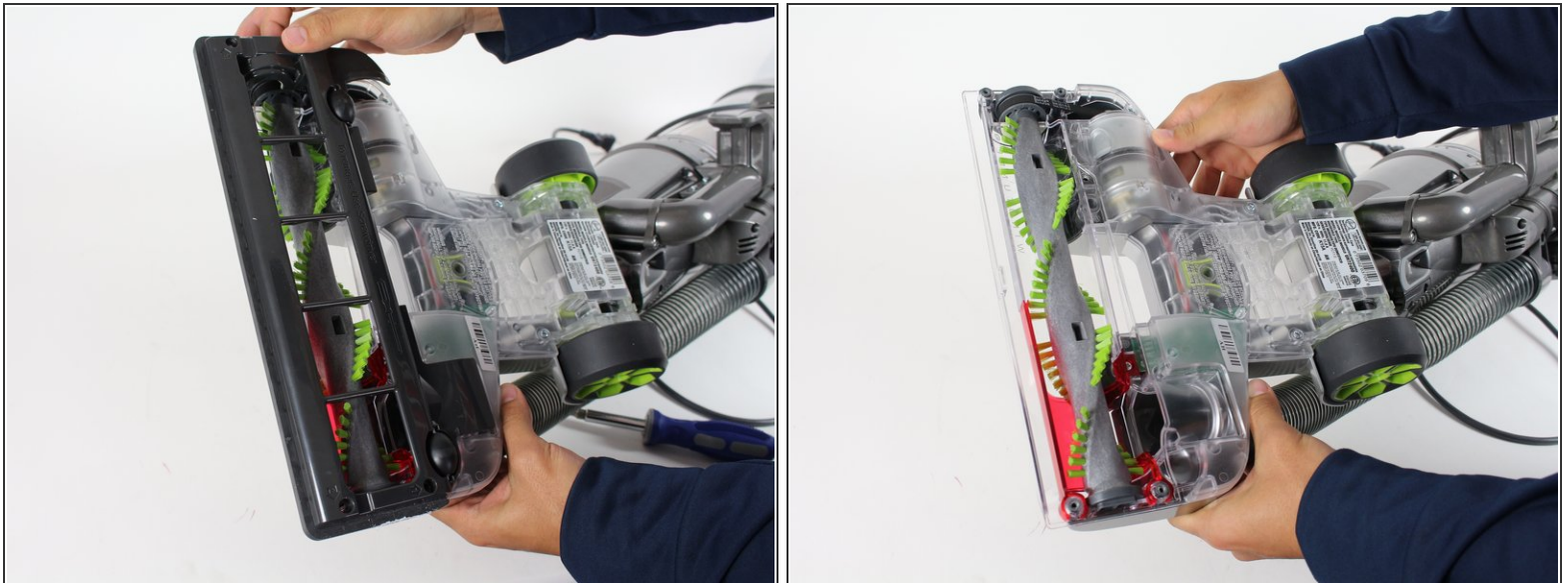
- [Hoover Brush Roll Assembly #440004079](#) (1)

Step 1 — Brush Roll



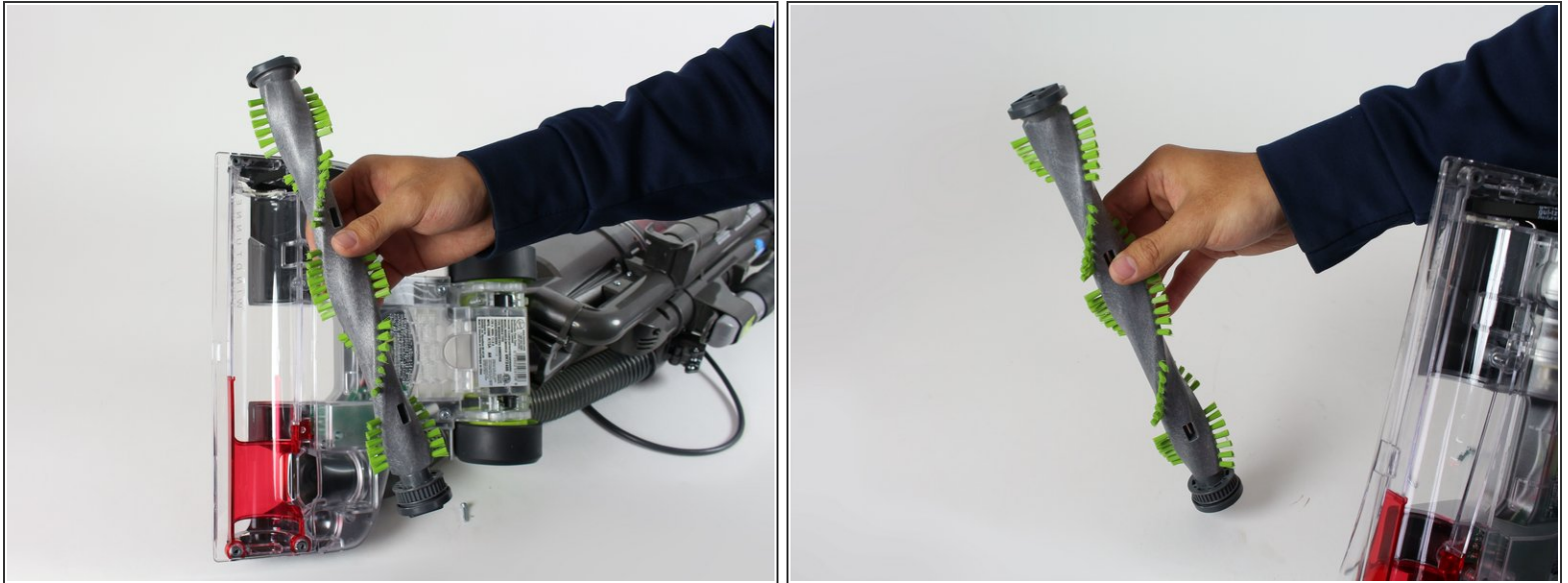
- Remove the 4 phillips 3/4" screws that hold the bottom plate.

Step 2



- Lift the plate up and off the vacuum head.

Step 3



- Pull the brush roll away from the belt and remove the old brush roll.

To reassemble your device, follow these steps in reverse order.